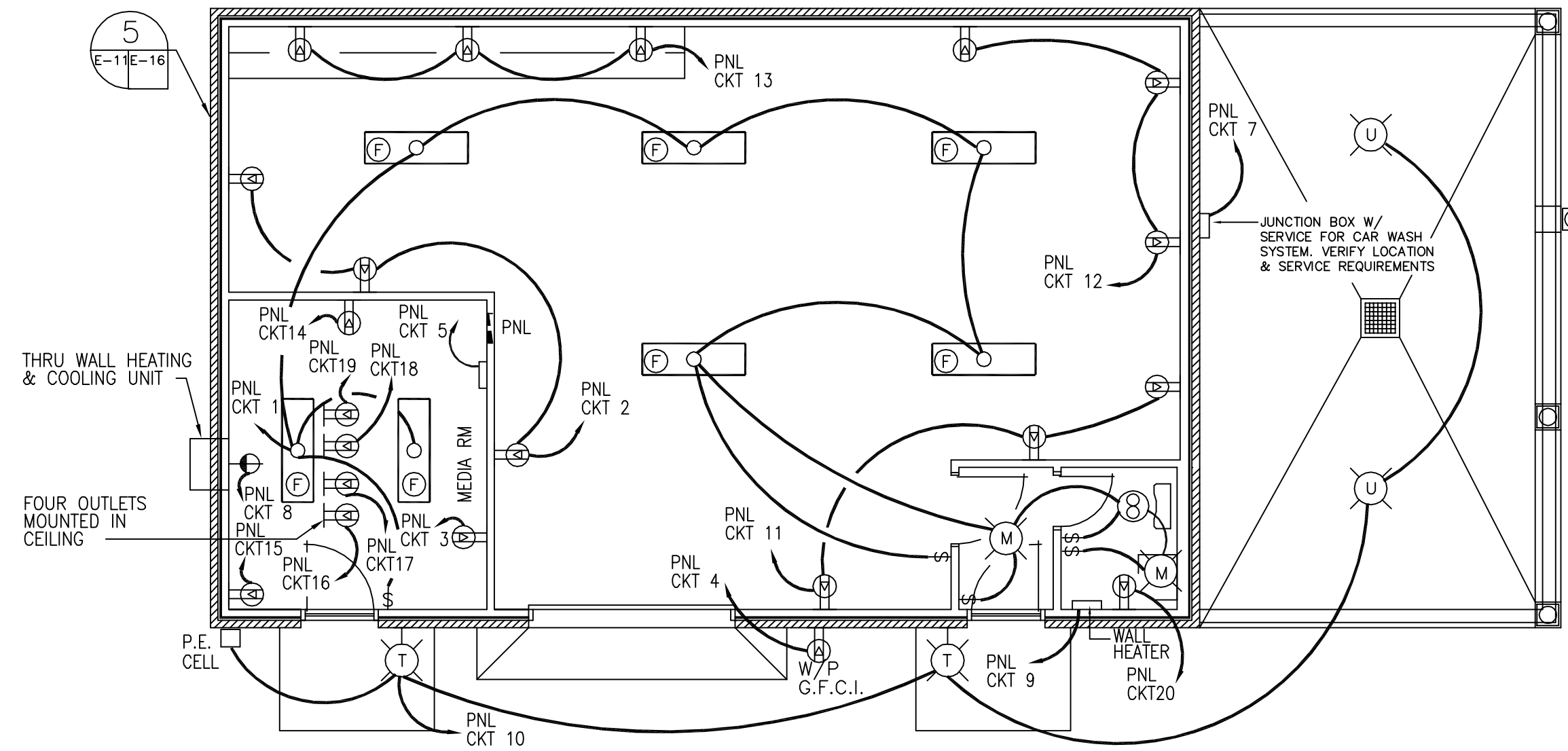


LEGEND

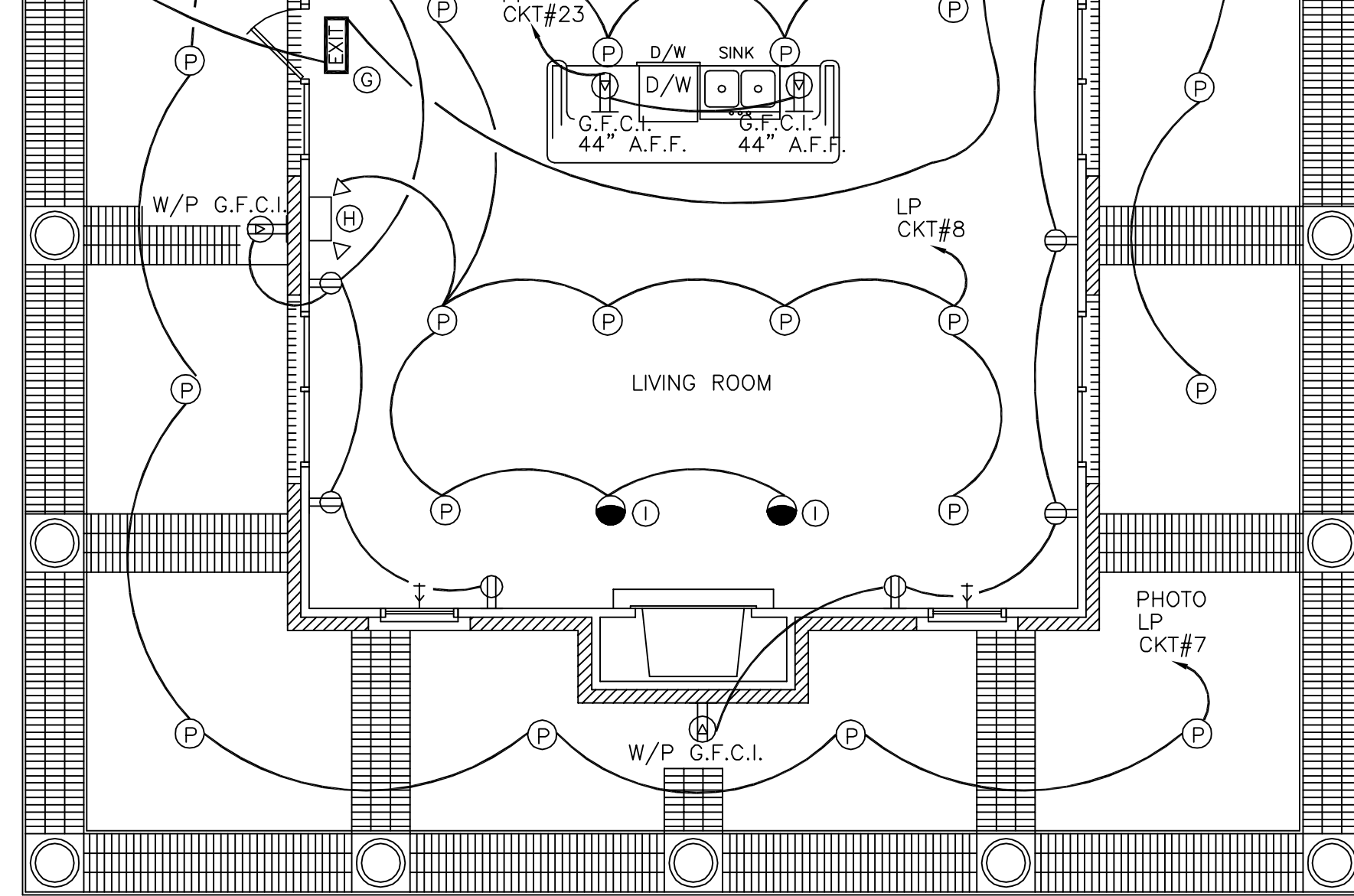
- [] - FLOURSCENT FIXTURE
- ⊗ - BROADWAY LIGHT
- ⊗ - CEILING FAN
- ⊗ - CEILING MTG FIXTURE
- ⊗ - WALL MTG FIXTURE
- - RECESSED FIXTURE
- ⊗ - VENT
- EXIT - EXIT LIGHT, BATTERY BACK-UP
- ⊗ - EMERGENCY LIGHT, BATTERY BACK-UP
- ⊗ - SWITCH
- ⊗ - 3 WAY SWITCH
- ⊗ - DUPLEX RECEPTACLE
- ⊗ - GFI RECEPTACLE
- ⊗ - DISCONNECT SWITCH
- ⊗ - POWER PANEL
- (WH) - HOT WATER HEATER WITH DISCONNECT
- ⊗ - 220 OUTLET
- ⊗ - SMOKE DETECTOR
- ⊗ - CABLE TV OUTLET
- ⊗ - PHONE

LIGHT FIXTURE SCHEDULE

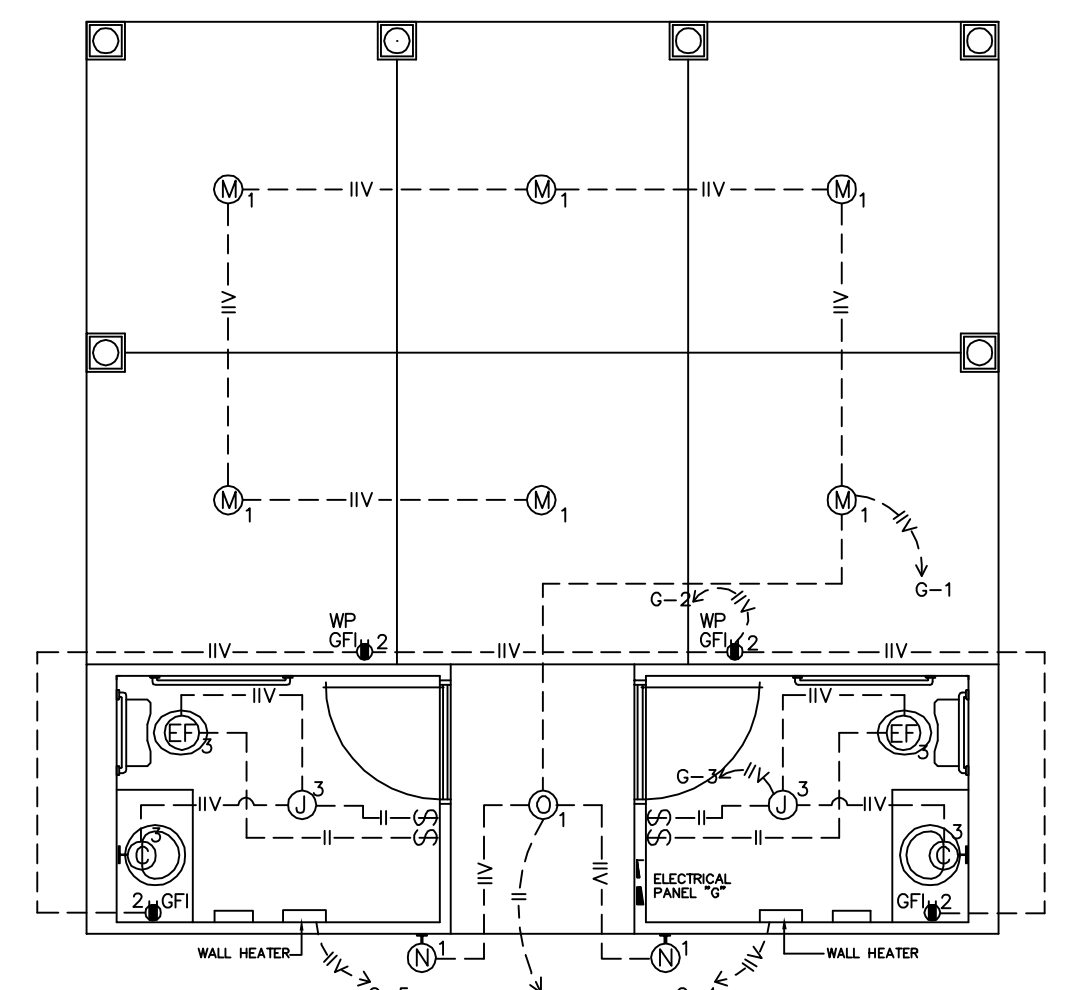
MARK	TYPE	MFR.	CAT. NO.	LAMP	MOUNTING	VOLTS
A	A	PROGRESS	P5745-30	2	SURFACE	120
B	B	PROGRESS	P4961-30	2	SURFACE	120
CB	CB	PROGRESS	P7196-30ES	4	SURFACE	120
CD	CD	CRAFTMADE	TX107-W/WA	X	SURFACE	120
CD1	CD1	CRAFTMADE	F104/403	1/4	ATTACHMENT	120
X	X	LITHONIA	10830120ES	1	SURFACE	120
CE	CE	LITHONIA	LQMSWR120/277ELN	X	SURFACE	120
CF	CF	LITHONIA	ELM2	2	WALL	120
CO	CO	PROGRESS	P87A70/808231	1	RECESSED	120
CR	CR	PROGRESS	P5097-10	1	PENDANTS	120
CC	CC	PROGRESS	P3299-10	6	WALL & VANITY	120
D	D	PROGRESS	P7816-30ES	2	SURFACE	120
G	G	DESIGNERS	4732-PB	1	SURFACE	120
J	J	DESIGNER	4731-PB	1	SURFACE	120
K	K	EAGLE	604	1	SURFACE	120
R3	R3	PROGRESS	P87-AT/8066-31	1	RECESSED	120
S	S	DESIGNER	1151PB	2	SURFACE	120
S	S	SMOKE FIREX	4518	X	CEILING	120 SMOKE DETECTOR W/BATTERY BACKUP
T	X	PER OWNER	X	X	X	X
X	X	LITHONIA	11884120ES	2	SURFACE	120
CC	CC	PROGRESS	P3335-10	5	WALL & VANITY	120
CC	CC	PROGRESS	P3300-10	8	WALL & VANITY	120



MAINTENANCE BLDG. LIGHTING & POWER
SCALE: 1/4" = 1'-0"



LEASING OFFICE 1ST FLOOR LIGHTING & POWER
SCALE: 1/4" = 1'-0"



GAZEBO BLDG. LIGHTING & POWER
SCALE: 1/4" = 1'-0"

PANEL SCHEDULE - GAZEBO

PANEL	CKT	BRK	WIRE	GROUND	SERVES
"G"	1	20/1	12	12	LIGHTS
100A, 120/240V	2	20/1	12	12	OUTLETS
FLUSH MTD.	3	20/1	12	12	LIGHTS
W/GND. BAR	4	20/1	12	12	HEATER
1 60A, 2P, MAIN BRKR	5	20/1	12	12	HEATER

LOAD CALCULATION FOR LEASING OFFICE

GENERAL LIGHTING LOAD VA/SF NEC TABLE 220-3	3VA X 5141SF =	15423VA
LIGHTING, SECOND FLOOR HALL	100VA X 21 =	2100VA
KITCHEN APPLIANCE NEC 220-16(a)	1500VA X 2 =	3000VA
LAUNDRY CIRCUIT NEC 220-16(b)	1500VA X 1 =	1500VA
HEATING AND A/C LOAD (3 TON HEAT PUMP)	4320VA X 1 =	4320VA
HEATING AND A/C LOAD (4 TON HEAT PUMP)	5832VA X 1 =	5832VA
ELECTRIC CLOTHES DRYER NEC 220-18	5000VA X 2 =	10000VA
WATER HEATER	4500VA X 1 =	4500VA
POOL PUMPS	1500VA X 2 =	3000VA
VENDING MACHINES	1500VA X 2 =	3000VA
TOTAL LOAD		52675VA
	52675VA / 240V =	219.48A

THE BRYAN COMPANY
ISLAND PARK
APARTMENT COMMUNITY
SHREVEPORT, LA

ISLAND PARK
DAMMON ENGINEERING, INC.
 ARCHITECTS - ENGINEERS
 SLIDELL, LA 70458
 819 ROBERT ROAD

SCALE: AS NOTED
FILE: --
JOB No.: --
DATE: 03-29-04
SHEET
E-11
OF --