

UNIT SUMMARY
 9 - 1 BDRM. UNITS
 2 - 1 BDRM. HDPC UNITS
 7 - 2 BDRM. UNITS
 4 - STUDIO UNITS
 22 TOTAL UNITS

NOTE:
 1. 9' CEILINGS UNLESS NOTED OTHERWISE.
 2. TOP OF WINDOW R. O. AT 86".

FLOOR PLAN BLDG. F - OVERALL

Note: Although every effort has been made in preparing these plans and checking them for accuracy, the contractor must check all dimensions, details and code requirements applicable in the area of construction and be responsible for same.

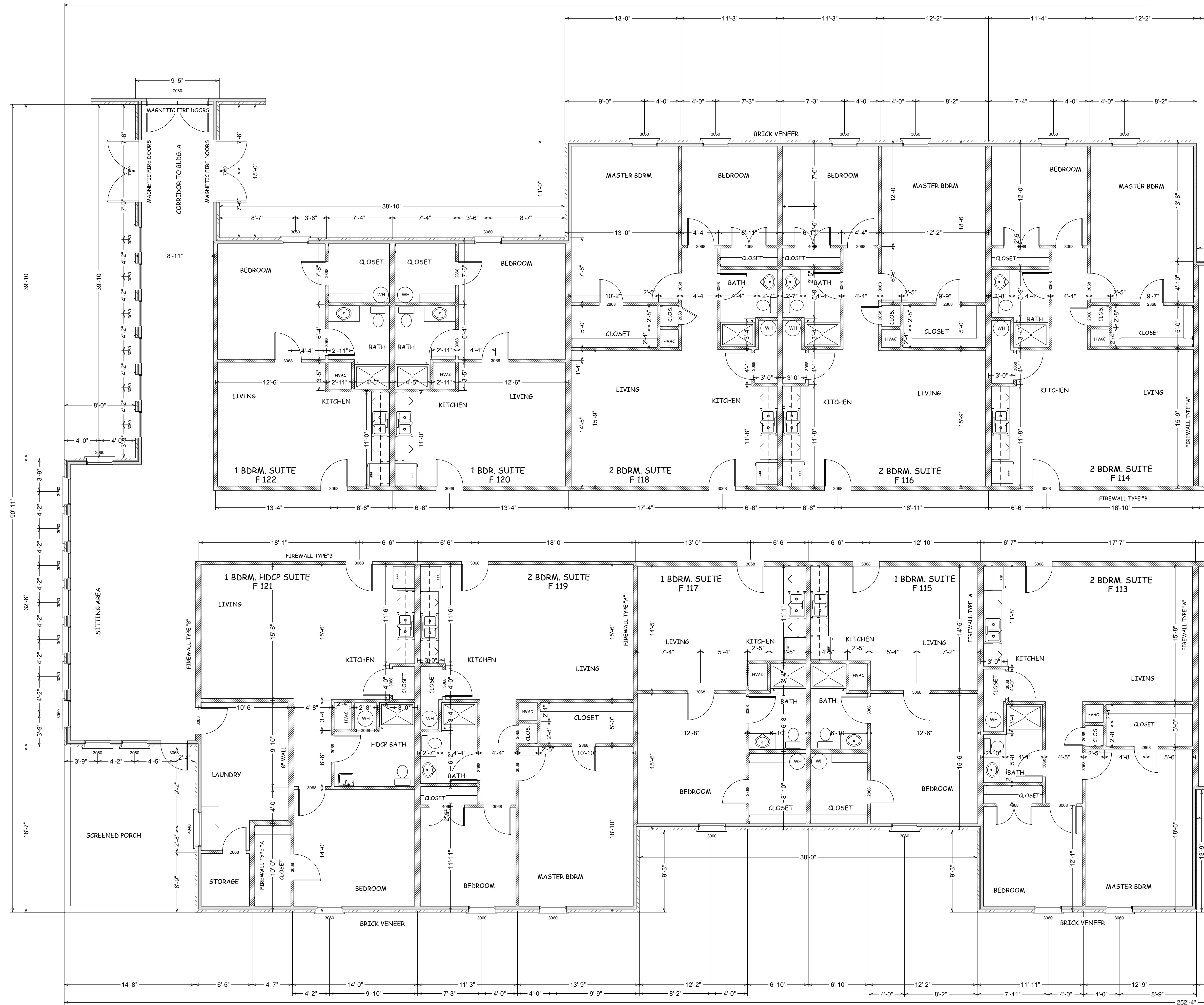
PLANS FOR:
Summerfield Retirement Community, LLC
 Brownswood Rd. & Dauphine Street
 St. Tammany Parish, LA

LIVING AREA 19093 SQ. FT.
 SCREEN PORCH 273 SQ. FT.
 COVER AREAS 375 SQ. FT.
 UNDER BEAM 19741 SQ. FT.

REVISIONS	BY
03/24/08	
08/28/08	

Drawn by
 Checked by
 Date
 12/27/07
 Scale
 1/8" = 1'-0"
 Job No.

Sheet No.
F1



MATCH LINE - SEE SHEET F3

FLOOR PLAN BLDG. F - NORTH SIDE

Note: Although every effort has been made in preparing these plans and checking them for accuracy, the contractor must check all dimensions, details and code requirements applicable in the area of construction and be responsible for same.

PLANS FOR:
Summerfield Retirement Community, LLC
 Brownswood Rd. & Dauphine Street
 St. Tammany Parish, LA

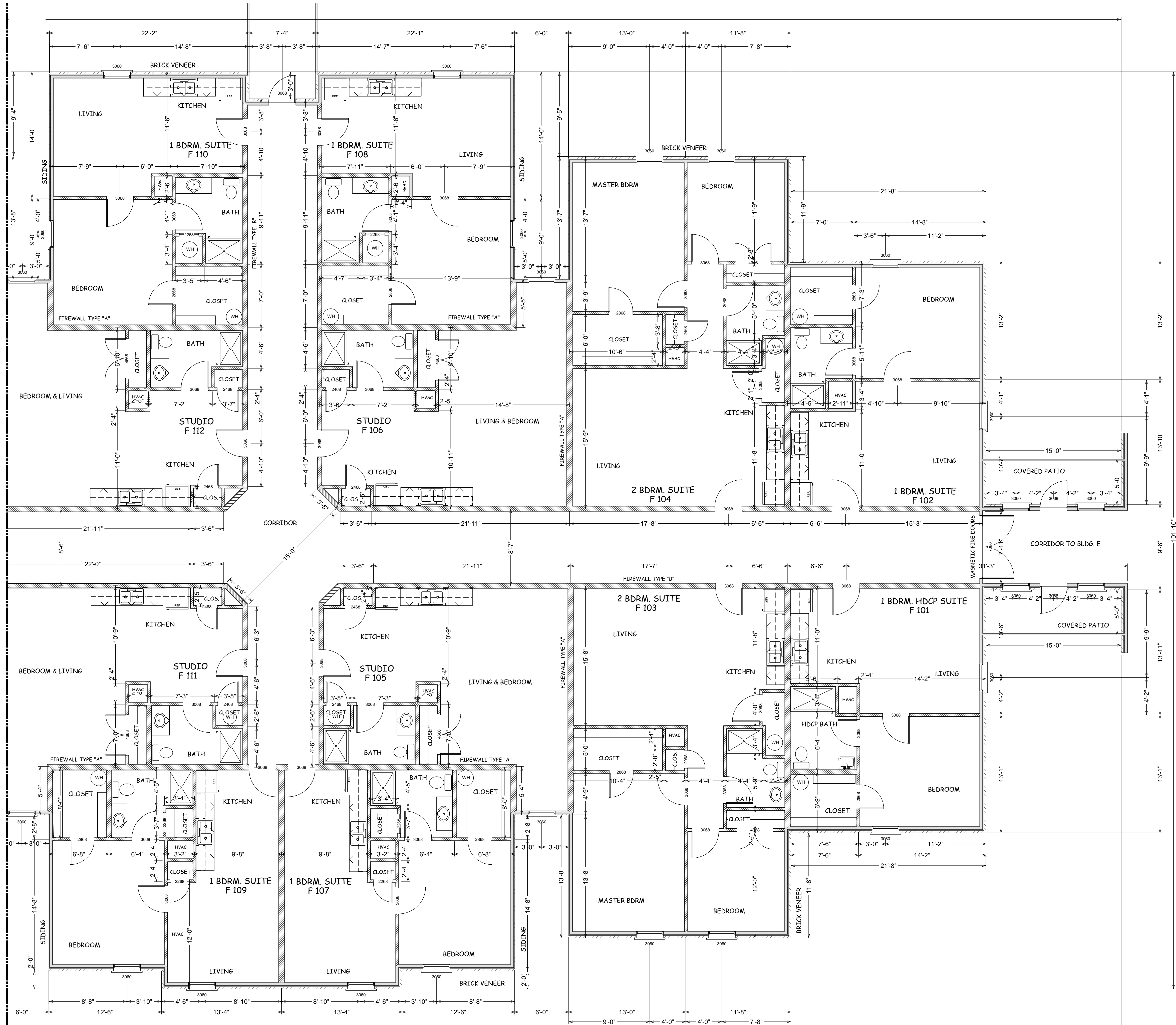
REVISIONS	BY
03/24/08	
08/28/08	

LIVING AREA 19093 SQ. FT.
 SCREEN PORCH 273 SQ. FT.
 COVER AREAS 375 SQ. FT.
 UNDER BEAM 19741 SQ. FT.

Drawn by
 Checked by
 Date 12/27/07
 Scale 3/16" = 1' - 0"
 Job No.

Sheet No.
F2

MATCH LINE - SEE SHEET F2



FLOOR PLAN BLDG. F - SOUTH SIDE

Note: Although every effort has been made in preparing these plans and checking them for accuracy, the contractor must check all dimensions, details and code requirements applicable in the area of construction and be responsible for same.

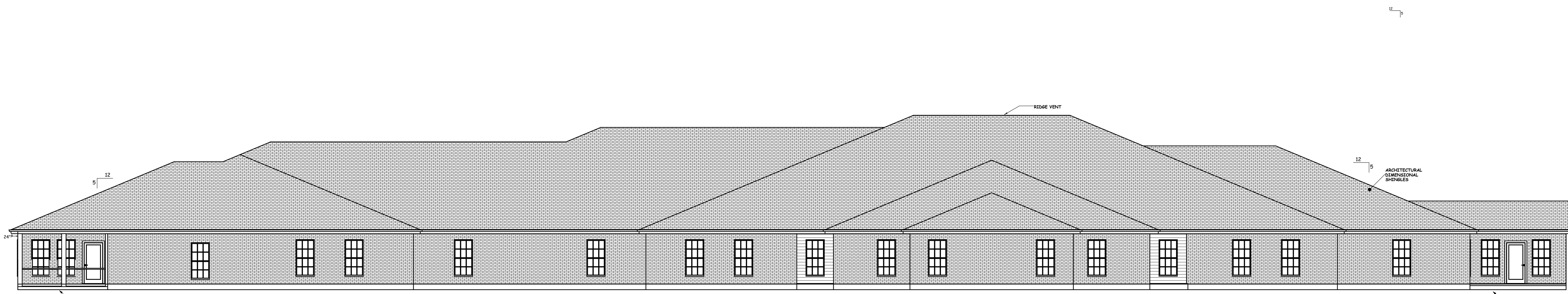
PLANS FOR:
Summerfield Retirement Community, LLC
 Brownswood Rd. & Dauphine Street
 St. Tammany Parish, LA

LIVING AREA 19093 SQ. FT.
 SCREEN PORCH 273 SQ. FT.
 COVER AREAS 375 SQ. FT.
 UNDER BEAM 19741 SQ. FT.

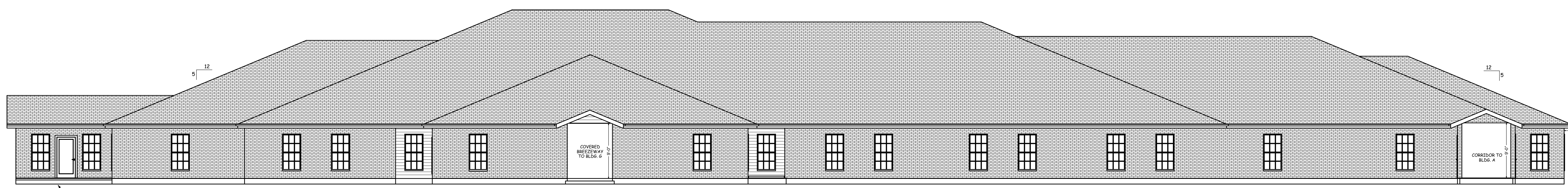
REVISIONS	BY
03/24/08	
08/28/08	

Drawn by
 Checked by
 Date 12/27/07
 Scale 3/16"=1'-0"
 Job No.

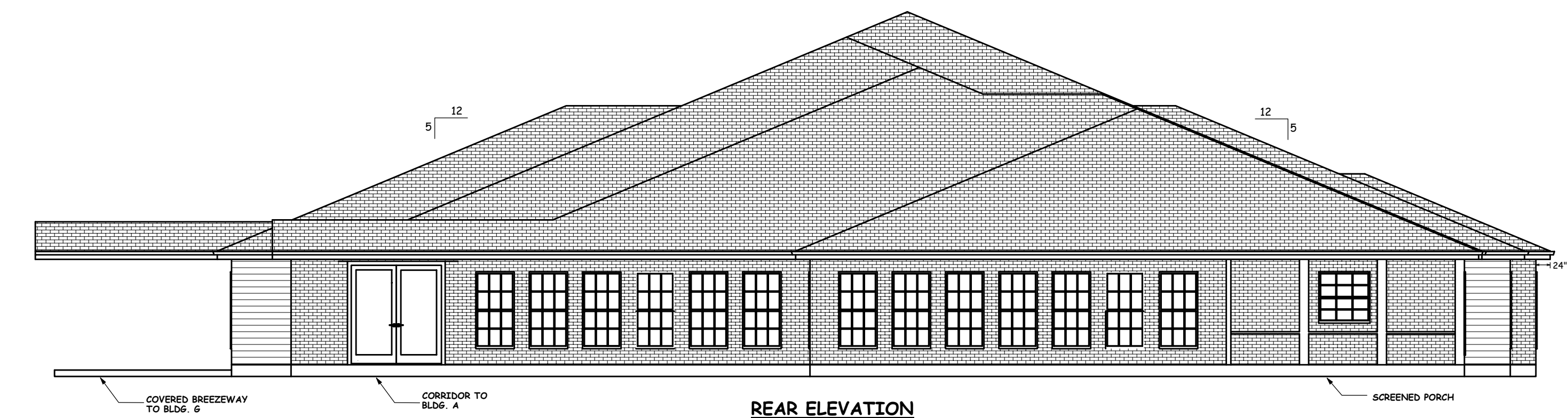
Sheet No.
F3



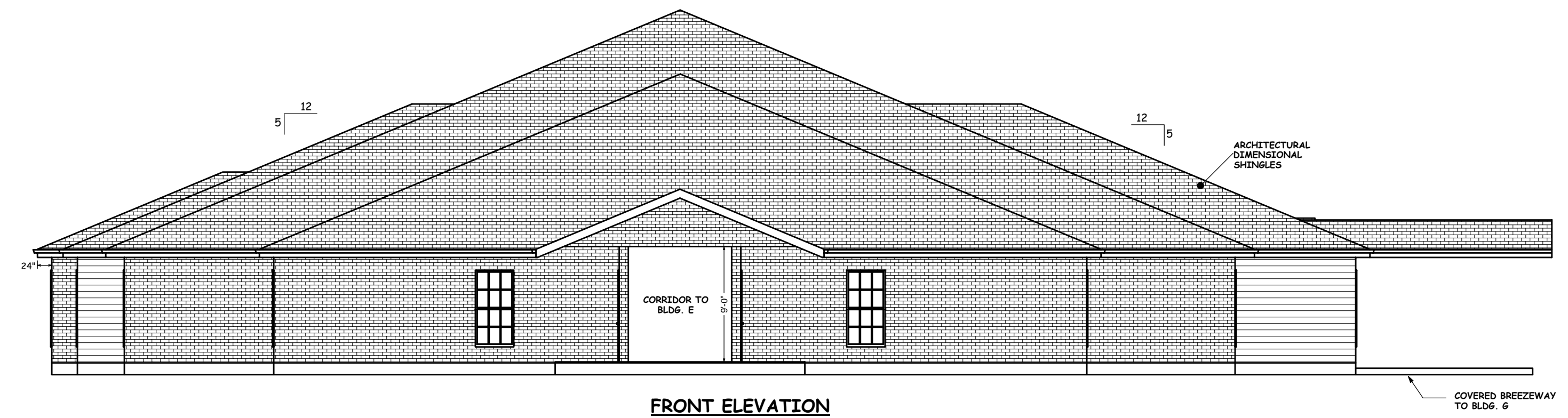
LEFT SIDE ELEVATION



RIGHT SIDE ELEVATION



REAR ELEVATION



FRONT ELEVATION

Note: Although every effort has been made in preparing these plans and checking them for accuracy, the contractor must check all dimensions, details and code requirements applicable in the area of construction and be responsible for same.

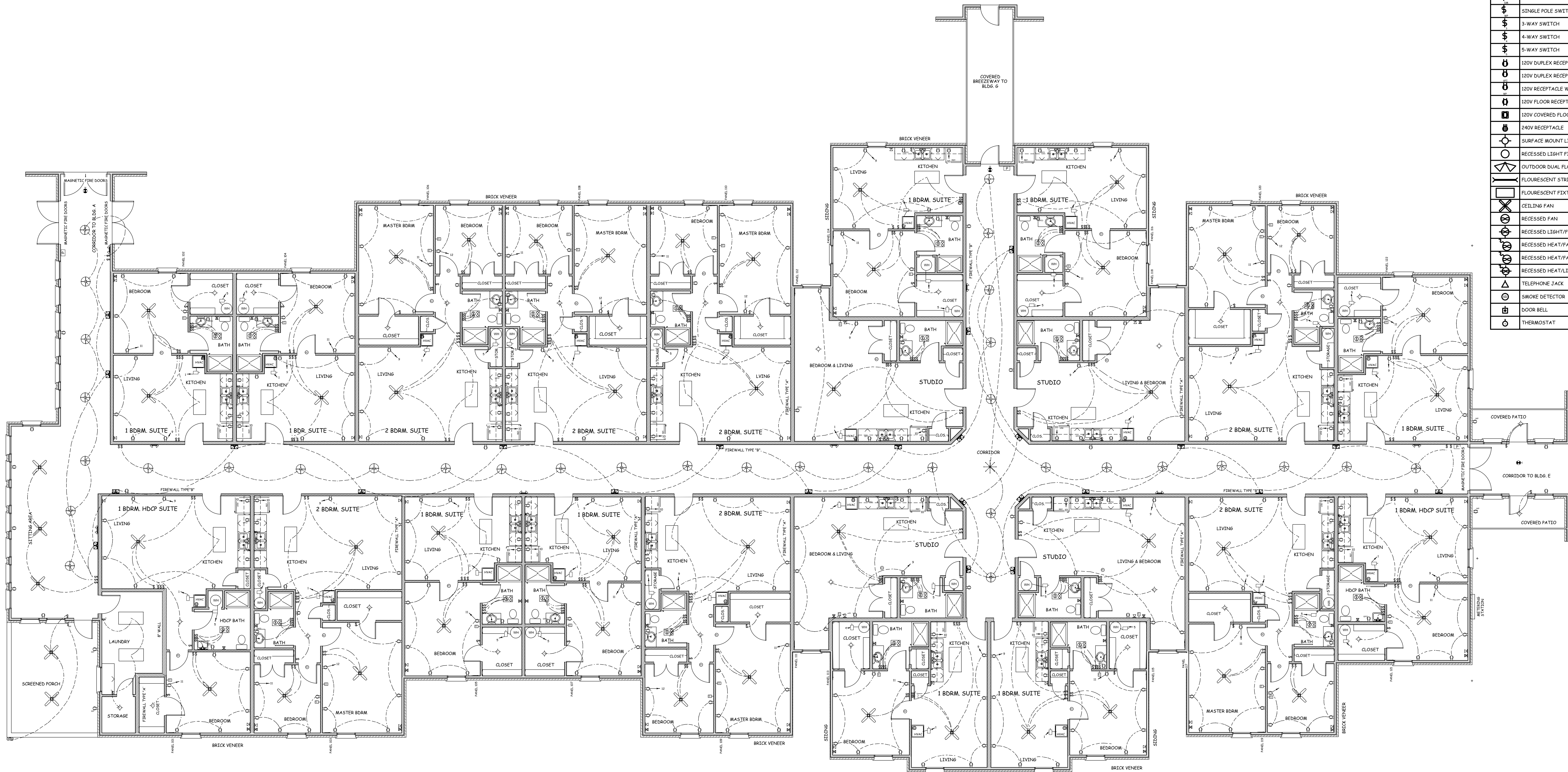
PLANS FOR:
Summerfield Retirement Community, LLC
 Brownsitch Rd. & Dauphine Street
 St. Tammany Parish, LA

LIVING AREA 19093 SQ. FT.
 SCREEN PORCH 273 SQ. FT.
 COVER AREAS 375 SQ. FT.
 UNDER BEAM 19741 SQ. FT.

REVISIONS	BY
03/24/08	
08/28/08	

Drawn by
 Checked by
 Date
12/27/07
 Scale
1/8" = 1' - 0"
 Job No.

Sheet No.
F4



LEGEND	
SYMBOL	DESCRIPTION
⊞	SINGLE POLE SWITCH
⊞	SINGLE POLE SWITCH W/DIMMER
⊞	SINGLE POLE SWITCH W/WP COVER
⊞	3-WAY SWITCH
⊞	4-WAY SWITCH
⊞	5-WAY SWITCH
⊞	120V DUPLEX RECEPTACLE
⊞	120V DUPLEX RECEPTACLE W/GFI
⊞	120V RECEPTACLE W/WATERPROOF COVER
⊞	120V FLOOR RECEPTACLE
⊞	120V COVERED FLOOR RECEPTACLE
⊞	240V RECEPTACLE
⊞	SURFACE MOUNT LIGHT FIXTURE
⊞	RECESSED LIGHT FIXTURE
⊞	OUTDOOR DUAL FLOOD LIGHT
⊞	FLOURESCENT STRIP LIGHT
⊞	FLOURESCENT FIXTURE
⊞	CEILING FAN
⊞	RECESSED FAN
⊞	RECESSED LIGHT/FAN
⊞	RECESSED HEAT/FAN
⊞	RECESSED HEAT/FAN
⊞	RECESSED HEAT/LIGHT/FAN
⊞	TELEPHONE JACK
⊞	SMOKE DETECTOR
⊞	DOOR BELL
⊞	THERMOSTAT

Note: Although every effort has been made in preparing these plans and checking them for accuracy, the contractor must check all dimensions, details and code requirements applicable in the area of construction and be responsible for same.

PLANS FOR:
Summerfield Retirement Community, LLC
 Brownswood Rd. & Dauphine Street
 St. Tammany Parish, LA

LIVING AREA 19093 SQ. FT.
 SCREEN PORCH 273 SQ. FT.
 COVER AREAS 375 SQ. FT.
 UNDER BEAM 19741 SQ. FT.

REVISIONS	BY
03/24/08	
08/28/08	

PANEL TYPICAL TWO BEDROOM APARTMENT				VOLTAGE: 120/208v, 1ø, 3w	
LOCATION: FEEDER SOURCE: NEAREST SERVICE ENTRANCE				80A MAIN BREAKER, 100A MAIN BUS	
				FLUSH MOUNTED W/EQUIPMENT GROUND BAR	
				SQUARE D TYPE QO OR EQUAL	
CKT. NO.	LOAD DESCRIPTION	BREAKER	LOAD (VA)	A0	B0
1	FURNACE BLOWER	30 2	--		
3					
5	WATER HEATER	20 1	--		
7	LIGHTING	20 1	--		
9	RECEPTACLES LIVING ROOM	20 1	--		
11	RECEPTACLES BEDROOM 1	20 1	--		
2	A/C CONDENSER	-- 2	20		
6	BATHROOM	-- 1	20		
8	KITCHEN COUNTER	-- 1	20		
10	REFRIGERATOR	-- 1	20		
12	BEDROOM 2	-- 1	20		
TOTAL CONNECTED LOAD (VA)				A0=	B0=
SOLID NEUTRAL NEUTRAL WIRE (W)				GROUND BUS GROUND WIRE (G)	

PANEL TYPICAL ONE BEDROOM APARTMENT				VOLTAGE: 120/208v, 1ø, 3w	
LOCATION: FEEDER SOURCE: NEAREST SERVICE ENTRANCE				80A MAIN BREAKER, 100A MAIN BUS	
				FLUSH MOUNTED W/EQUIPMENT GROUND BAR	
				SQUARE D TYPE QO OR EQUAL	
CKT. NO.	LOAD DESCRIPTION	BREAKER	LOAD (VA)	A0	B0
1	FURNACE BLOWER	30 2	--		
3					
5	WATER HEATER	20 1	--		
7	LIGHTING	20 1	--		
9	RECEPTACLES LIVING ROOM	20 1	--		
11	RECEPTACLES BEDROOM 1	20 1	--		
2	A/C CONDENSER	-- 2	20		
6	BATHROOM	-- 1	20		
8	KITCHEN COUNTER	-- 1	20		
10	REFRIGERATOR	-- 1	20		
12	SPARE	-- 1	20		
TOTAL CONNECTED LOAD (VA)				A0=	B0=
SOLID NEUTRAL NEUTRAL WIRE (W)				GROUND BUS GROUND WIRE (G)	

PANEL TYPICAL STUDIO APARTMENT				VOLTAGE: 120/208v, 1ø, 3w	
LOCATION: FEEDER SOURCE: NEAREST SERVICE ENTRANCE				80A MAIN BREAKER, 100A MAIN BUS	
				FLUSH MOUNTED W/EQUIPMENT GROUND BAR	
				SQUARE D TYPE QO OR EQUAL	
CKT. NO.	LOAD DESCRIPTION	BREAKER	LOAD (VA)	A0	B0
1	FURNACE BLOWER	30 2	--		
3					
5	WATER HEATER	20 1	--		
7	LIGHTING	20 1	--		
9	RECEPTACLES LIVING ROOM	20 1	--		
11	SPARE	20 1	--		
2	A/C CONDENSER	-- 2	20		
6	BATHROOM	-- 1	20		
8	KITCHEN COUNTER	-- 1	20		
10	REFRIGERATOR	-- 1	20		
12	SPARE	-- 1	20		
TOTAL CONNECTED LOAD (VA)				A0=	B0=
SOLID NEUTRAL NEUTRAL WIRE (W)				GROUND BUS GROUND WIRE (G)	

Drawn by
 Checked by
 Date 12/27/07
 Scale 1/8"=1'-0"
 Job No.
 Sheet No.
E7F