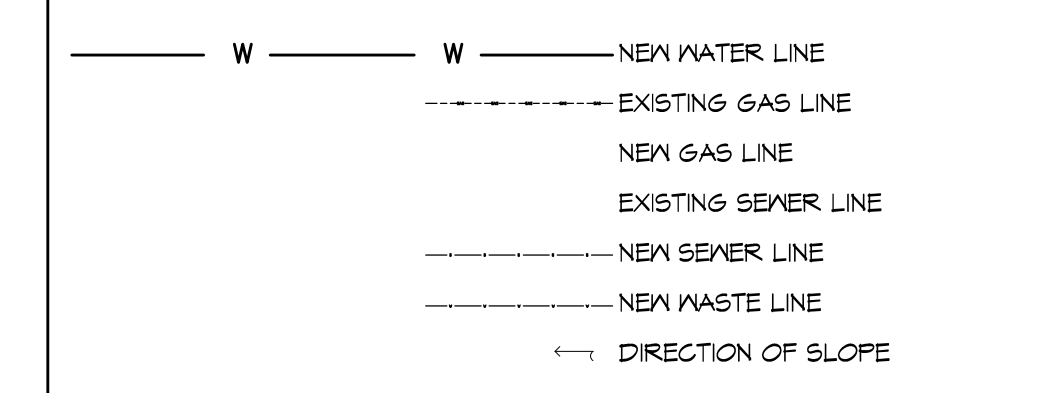


**GENERAL SITE UTILITIES NOTES**

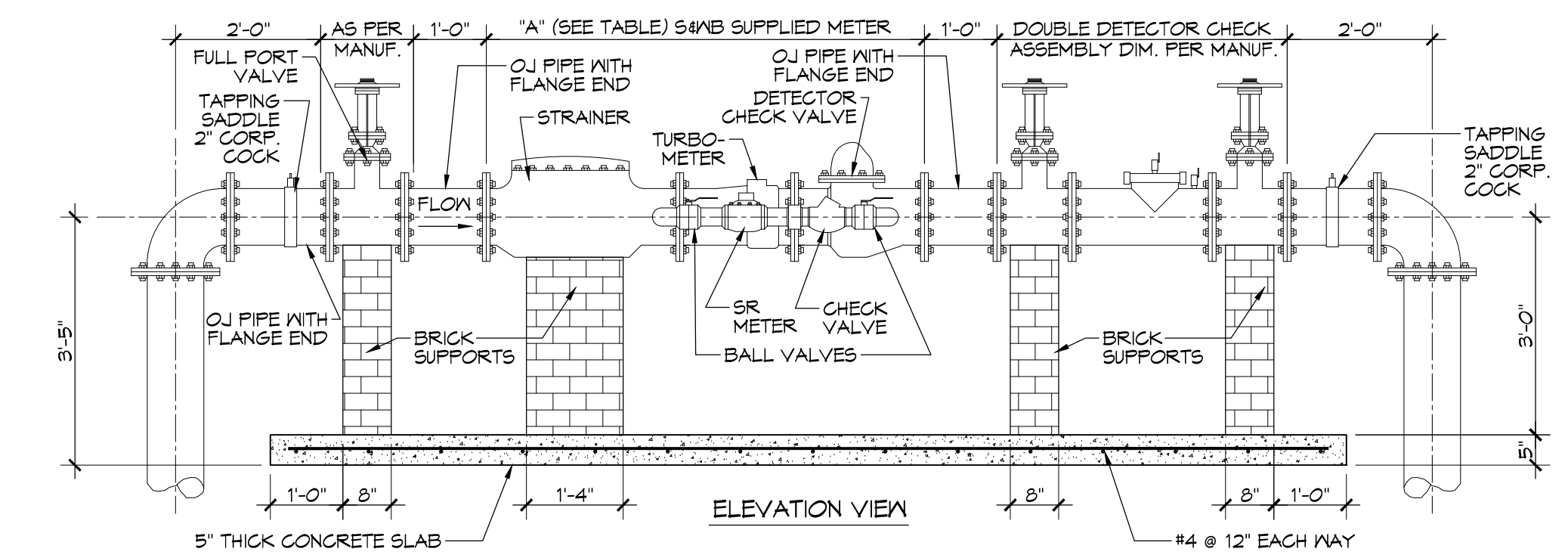
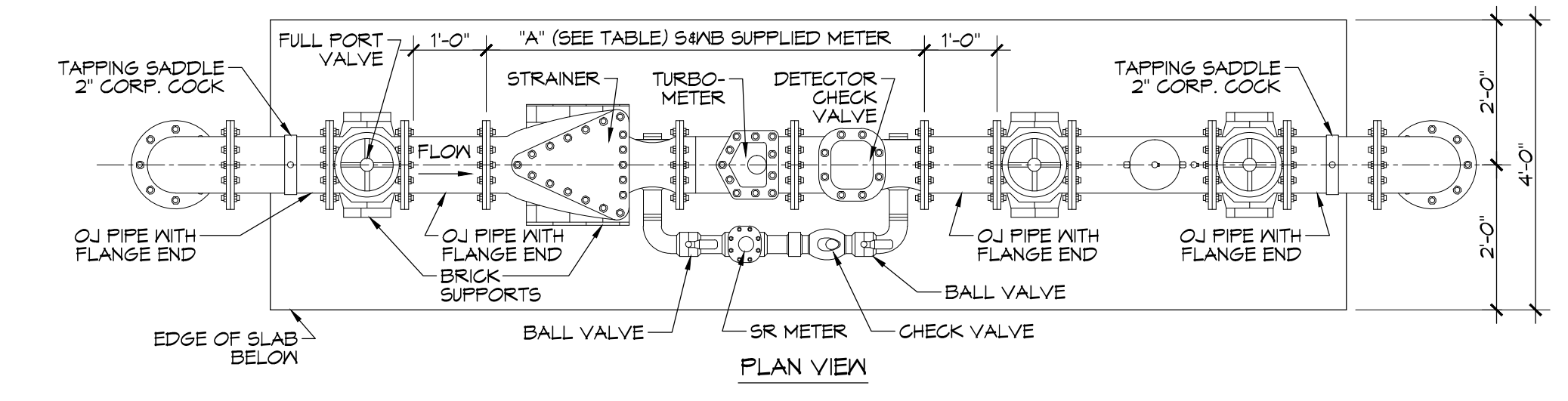
1. ALL CONSTRUCTION SHALL COMPLY WITH CONTRACT SPECIFICATIONS AND APPLICABLE LOCAL, STATE, AND FEDERAL STANDARDS AND REGULATIONS.
2. CONSTRUCTION SHALL NOT INTERRUPT EXISTING UTILITIES.
3. ALL DISTURBED GROUND SHALL BE RESTORED IN KIND TO A CONDITION EQUAL TO OR BETTER THAN ORIGINALLY FOUND.
4. SOIL EROSION CONTROL SHALL BE IN ACCORDANCE WITH THESE DOCUMENTS.
5. PROTECT EXISTING UTILITY LINES FROM DAMAGE. FOLLOW INDIVIDUAL UTILITY'S RECOMMENDATIONS FOR UTILITY LINE PROTECTION.
6. CONTRACTOR SHALL IMMEDIATELY REPORT ALL DAMAGE TO UTILITY LINES TO BOTH UTILITY COMPANY AND ENGINEER.
7. ALL DAMAGE CAUSED TO EXISTING UTILITY LINES BY CONTRACTOR'S OPERATIONS SHALL BE REPAIRED BY THE CONTRACTOR TO COMPLETE SATISFACTION OF THE UTILITY COMPANY AND ENGINEER.
8. LOCATION OF EXISTING UTILITIES IS APPROXIMATE. CONTRACTOR SHALL FIELD VERIFY EXACT LOCATIONS.
9. CONTRACTOR IS RESPONSIBLE FOR CUT AND CAP OF EXISTING UTILITIES PRIOR TO ANY DEMOLITION.
10. CONTRACTOR SHALL CONTACT LOUISIANA ONE CALL PRIOR TO COMMENCEMENT OF SITE EXCAVATION.

**SITE UTILITIES LEGEND**



SIZE/DIMENSION TABLE

6"MB SUPPLIED TURBO METER	"A" DIMENSION IN INCHES
4"	52"
6"	68"
8"	77"
10"	99"



**2 FIRE & DOMESTIC WATER ASSEMBLY**  
SCALE: N.T.S.

**1 SITE UTILITIES PLAN**  
SCALE: 1"=10'-0"

**DAMMON ENGINEERING, INC.**  
LOUISIANA & MISSISSIPPI  
SHREVEPORT, LOUISIANA  
PH: 855-649-5832 FAX: 985-641-5950  
WWW.DAMMONENGINEERING.COM  
INFO@DAMMONENGINEERING.COM

RESIDENCE JOSEPHINE CONDOMINIUMS  
2100 St. Thomas St.  
New Orleans, Louisiana 70130

SCALE: AS SHOWN FILE NAME: 15014/Elev02.A  
DATE: 27 Oct. 2015

STEVEN J. FINEGAN ARCHITECTS, LTD.  
A PROFESSIONAL CORPORATION  
123 S. Pierce St. - New Orleans, LA 70119  
(504)486-5744 www.stevfineganarchitect.com  
E-mail: stevfinegan@nocomail.com

NO.	DATE	REVISIONS

C1.3

This drawing is the property of STEVEN J. FINEGAN ARCHITECTS, LTD. It is not to be reproduced, copied or altered in whole or in part. It is not to be used for any purpose without the approval of STEVEN J. FINEGAN ARCHITECTS, LTD. and is to be returned on request.