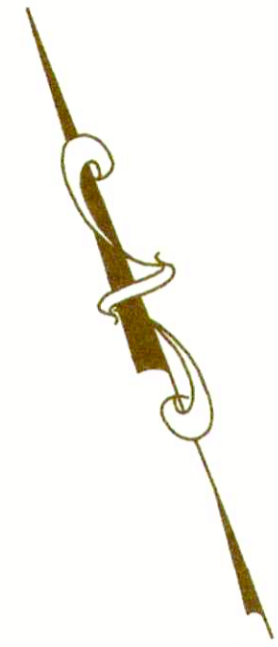
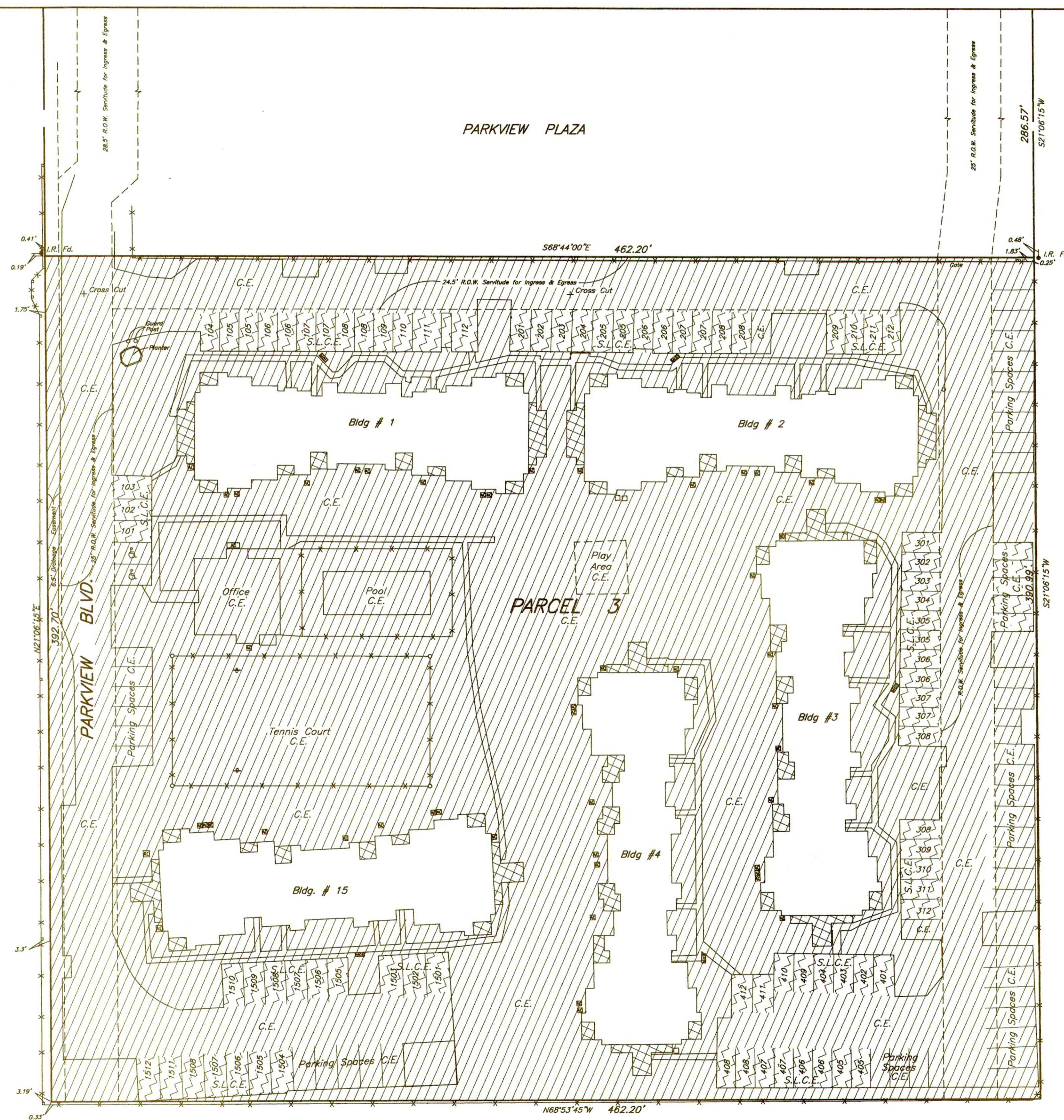
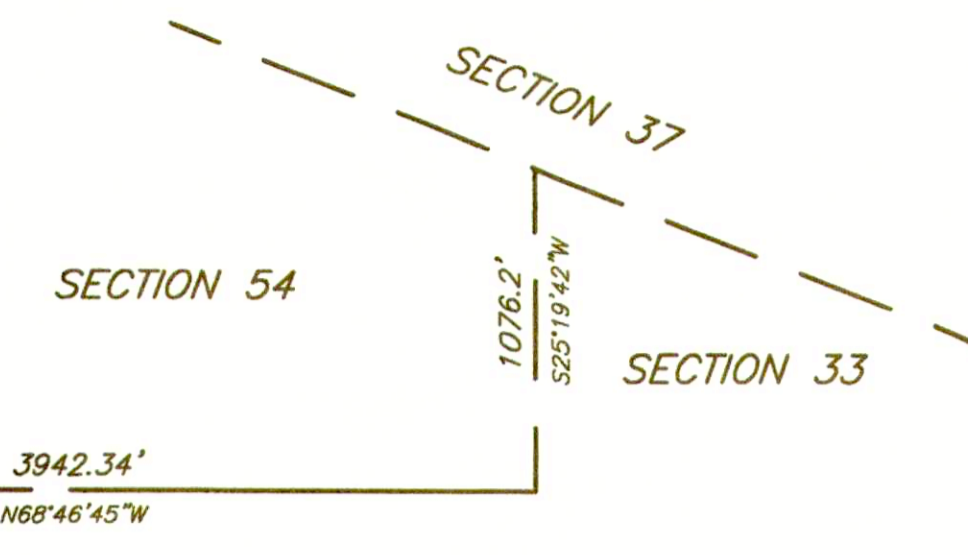


PORTION OF  
SECTION 54, T.7 S., R.11 E.  
ST. TAMMANY PARISH, LA.



# The Condominiums at Parkview

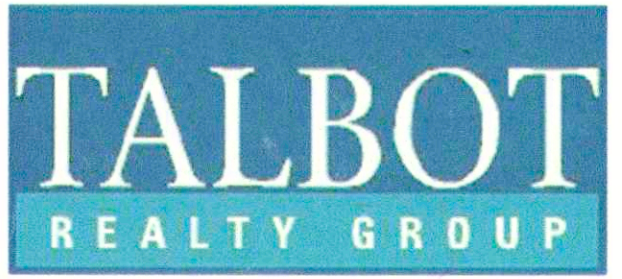
LA. HWY. No. 22



Square footage was calculated from face of interior wall to face of interior wall of units.

Unit -    
 C.E. - Common Element    
 L.C.E. - Limited Common Element    
 L.C.E. - Limited Common Element  

NOTE: Improvements may not be to scale for clarity. The dimensions shown prevail over scale.



September 11, 2006, Revised Parking Spaces

THE SERVICES AND RESTRICTIONS SHOWN ON THIS SURVEY ARE LIMITED TO THOSE SET FORTH IN DESCRIPTION FURNISHED US AND THERE IS NO REPRESENTATION THAT ALL APPLICABLE SERVITUDES AND RESTRICTIONS ARE SHOWN HEREON. THE SURVEYOR HAS MADE NO TITLE SEARCH OR PUBLIC RECORD SEARCH IN COMPLETING THE DATA FOR THIS SURVEY.

THE FEDERAL INSURANCE ADMINISTRATION FLOOD HAZARD BOUNDARY MAP INDICATES THAT THE ABOVE DESCRIBED PROPERTY IS LOCATED IN FIA ZONE

Date: June 16, 2006 Scale: 1"=30'

This plat represents an actual ground survey made by me or under my direct supervision and control and conforms to the requirements for the Minimum Standards for Property Boundary Surveys as found in Louisiana Administrative Code TITLE 46:LX, Chapter 25 for a Class "C" survey.  
 Made at the request of The Steeg Law Firm, L.L.C.

Gilbert, Kelly & Couture, Inc., Surveying & Engineering  
 2121 N. Causeway Blvd., Metairie LA 70001 (504) 836-2121