

**DAMMON**  
ENGINEERING, INC.

CHIEF ENGINEER  
EMMETT  
DAMMON, P.E.

CHIEF ARCHITECT  
ROBERT  
WILTSE

1 095 FLORIDA AVENUE  
SLIDELL, LA. 70458  
OFFICE: 985-649-5832  
FAX: 985-641-5950

WEBSITE:  
WWW.DAMMONENGINEERING.COM

EMAIL:  
DAMMONENG@BELLSOUTH.NET

ARCHITECTURE  
ENGINEERING  
STUDIES  
PLANNING  
INVESTIGATION  
EXPERT WITNESS

SCHEME  
TWO

ANDERSON  
MEMORY CARE  
APARTMENTS  
-  
SLIDELL, LA

SITE  
PLAN

REV:

SCALE: AS NOTED

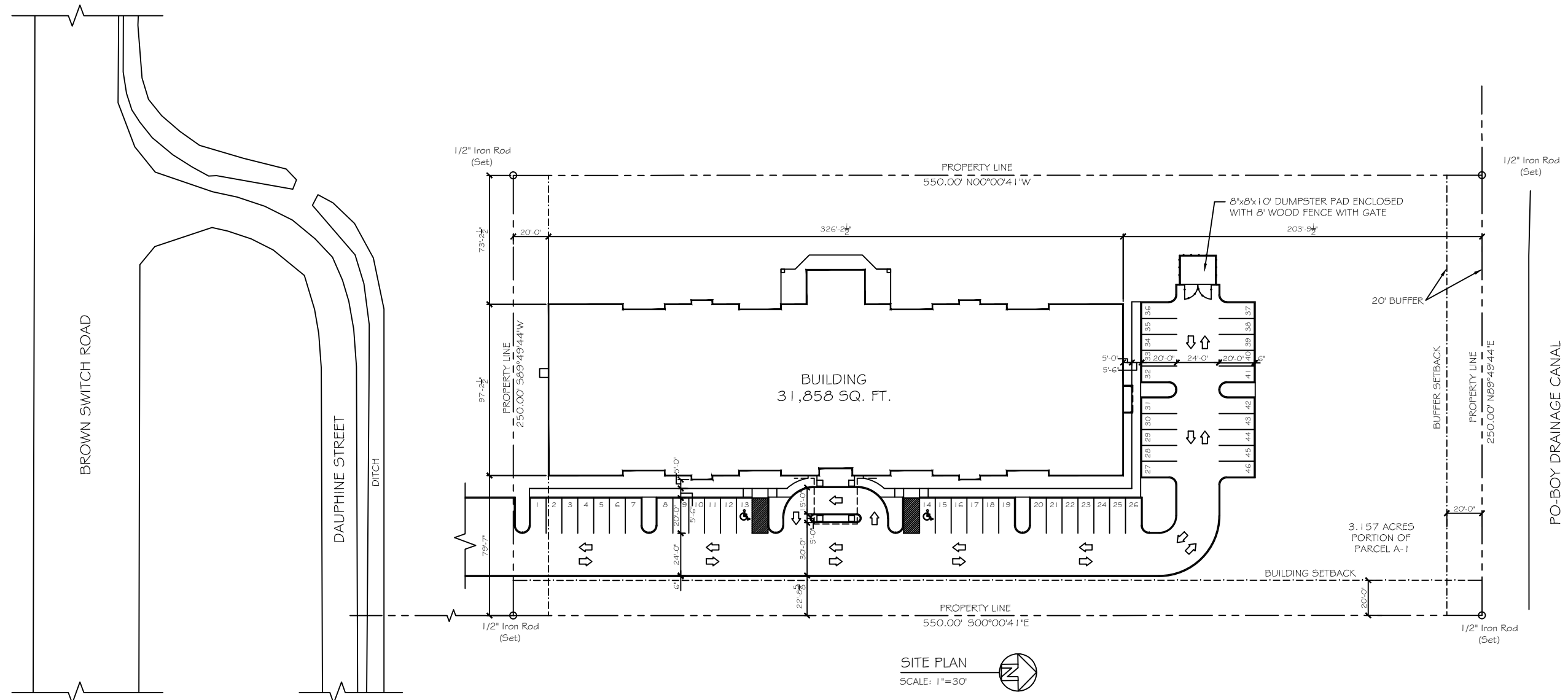
JOB#:

DATE: 07-15-10

SHEET

C-2

OF



PARKING REQUIREMENTS-	
	GROUP 1 - INSTITUTIONAL ASSISTED LIVING OCCUPANCY
	PROVIDE .5 SPACE FOR EVERY BED, 1 SPACE PER DOCTOR, AND 2 SPACES FOR EVERY 3 EMPLOYEES ON DUTY
	50 BEDS = 25 SPACES 1 DOCTOR = 1 SPACE 15 EMPLOYEES = 10 SPACES TOTAL SPACES = 36 SPACES
PARKING SPACES REQUIRED =	36 (INCLUDING 2 HANDICAP PARKING SPACES)
PARKING SPACES PROVIDED =	46 (INCLUDING 2 HANDICAP PARKING SPACES)