

**DAMMON ENGINEERING, INC.**  
 CHIEF ENGINEER  
 EMMETT DAMMON, P.E.  
 CHIEF ARCHITECT  
 ROBERT WILTSE

554 OLD SPANISH TRAIL  
 SLIDELL, LA, 70458  
 OFFICE: 985-649-5632  
 FAX: 985-641-5950

WEBSITE:  
 WWW.DAMMONENGINEERING.COM  
 EMAIL:  
 DAMMONENG@BELLCSOUTH.NET

ARCHITECTURE  
 ENGINEERING  
 STUDIES  
 PLANNING  
 INVESTIGATION  
 EXPERT WITNESSES

FLOOR PLAN

CASEY CIVIL, LLC  
 LOT 2A  
 TERRACE AVE  
 SLIDELL, LA

REV.:

SCALE: AS NOTED

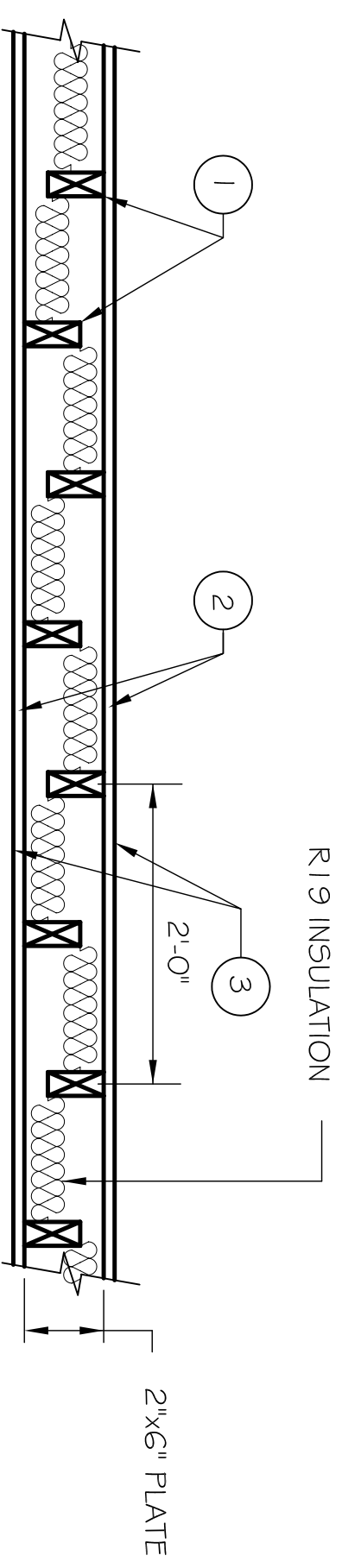
JOB#:

DATE: 06-15-11

SHEET

A-1

OF



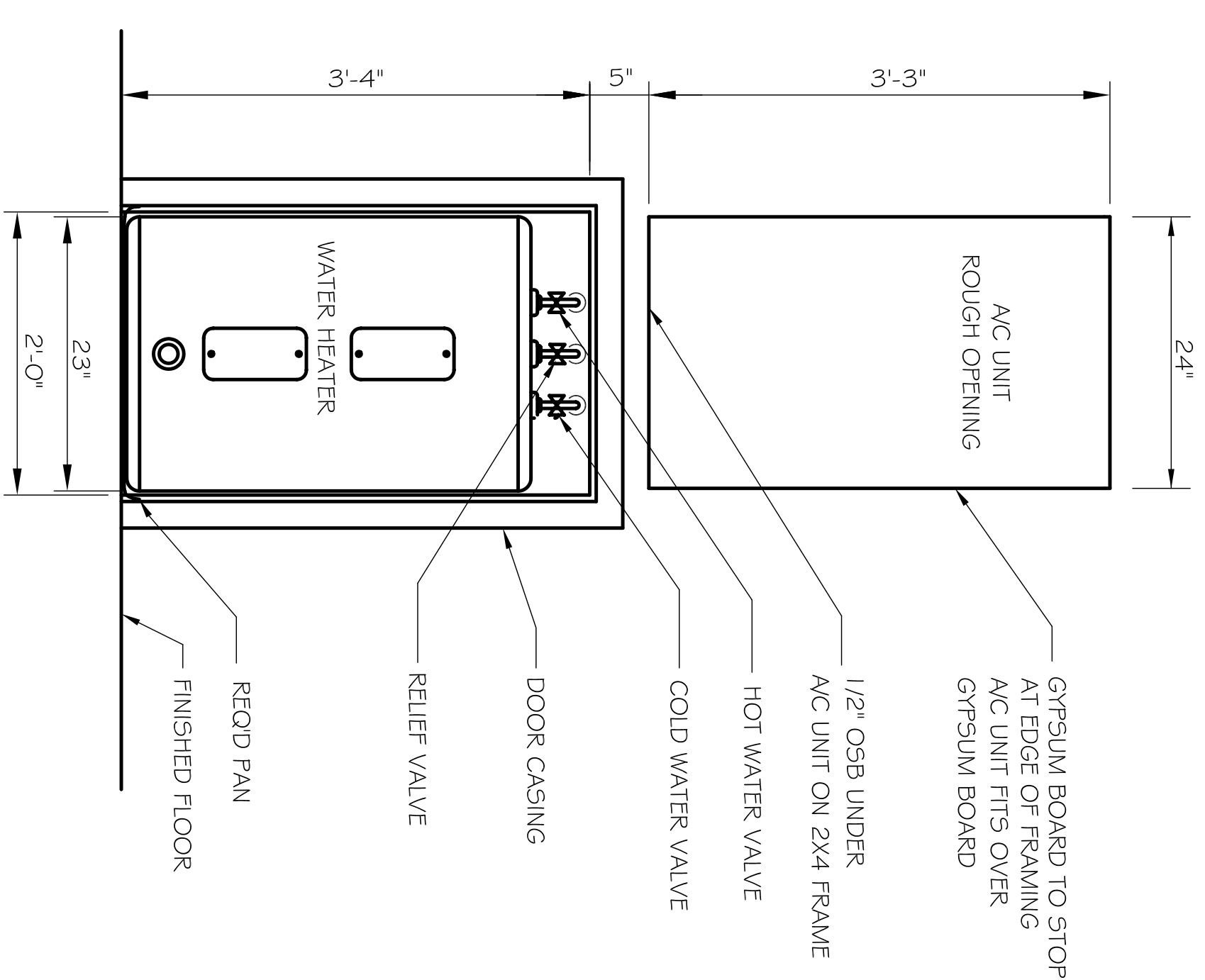
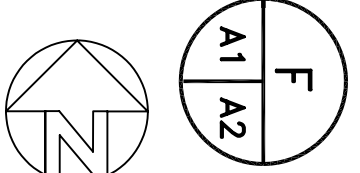
1. WOOD STUDS- NOM. 2x4 IN. ALTERNATING ON OPPOSITE SIDES OF NOM. 2x6" WOOD PLATES SPACED 24" O.C. MAX ON EACH SIDE OF PLATE
2. WALLBOARD GYPSUM 5/8" THICK WALLBOARD PAPER FACE. TAPERED EDGES. WALLBOARD NAILED TO EACH STUD 7" O.C. WITH 6d CEMENT COATED NAILS. 1 7/8" LONG. #6 BUGLE HEAD DRY WALL SCREWS MAY BE SUBSTITUTED FOR THE 6d CEMENT COATED NAILS, WHEN USED IN WIDTHS OTHER THAN 48". WALLBOARD TO BE INSTALLED HORIZONTALLY.
3. JOINTS AND NAIL HEADS - WALLBOARD JOINTS COVERED WITH TAPE AND JOINT COMPOUND. NAIL HEADS COVERED WITH JOINT COMPOUND.

THE PARTY WALL IS TO EXTEND VERTICALLY FROM FIRST FLOOR TO BOTTOM OF ROOF SHEATHING.

FIRE RESISTANCE RATINGS ANSUL263 (BXUV) DESIGN \*U340 BEARING WALL RATING 1 HR.

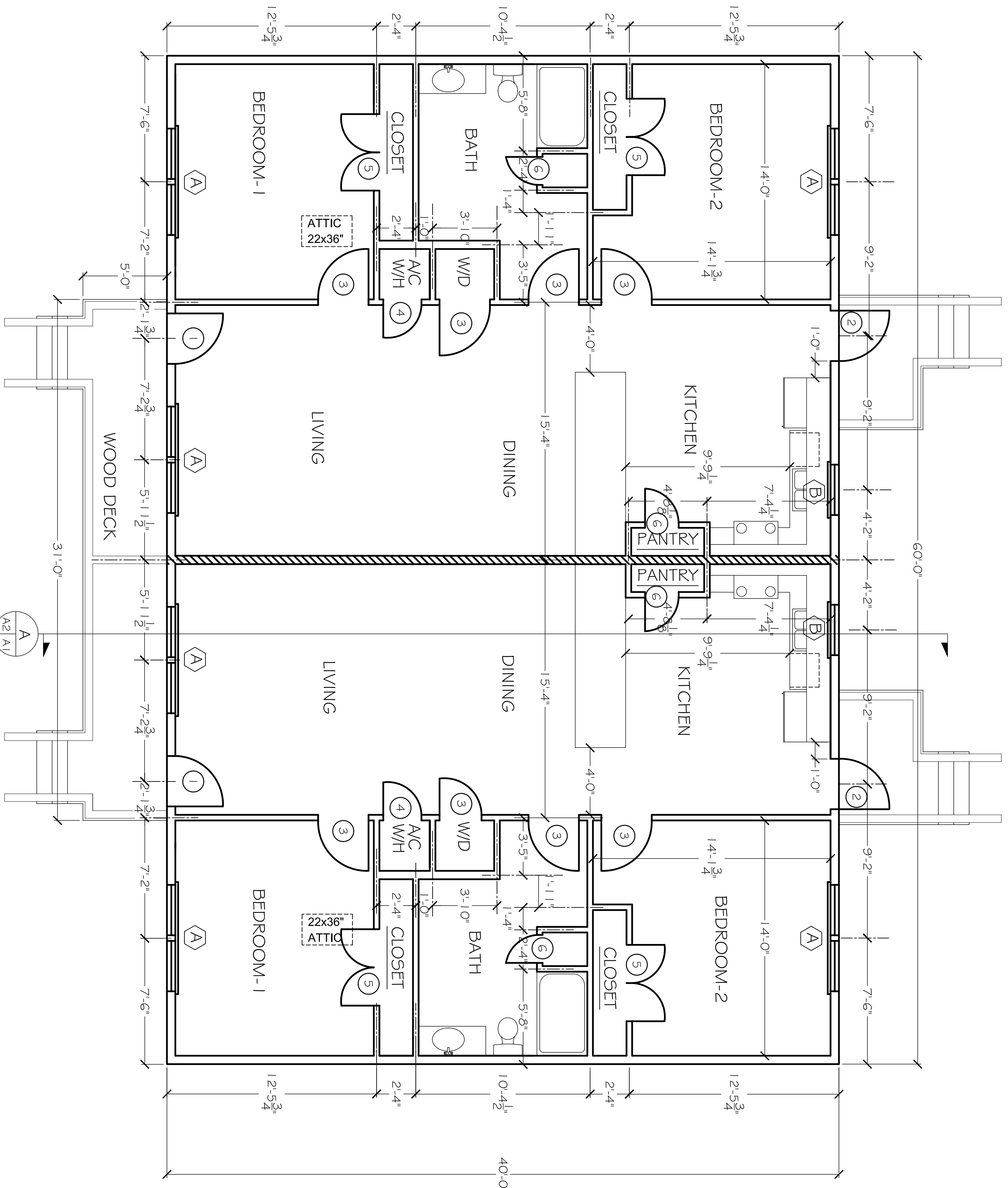
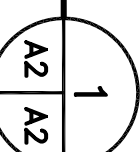
1 HR. PARTY WALLS

N.T.S.



HOT WATER HEATER/ AC UNIT ELEVATION

N.T.S.



FLOOR PLAN

SCALE: 1/4"=1'

