



DAMMON
ENGINEERING, INC.

CHIEF ENGINEER
EMMETT
DAMMON, P.E.
CHIEF ARCHITECT
ROBERT
WILTSE

554 OLD SPANISH TRAIL
SUITE L, LA. 70458
OFFICE: 985-649-5032
FAX: 985-641-5950

WEBSITE:
WWW.DAMMONENGINEERING.COM
EMAIL:
DAMMONENG@BELLFLOWTH.NET

ARCHITECTURE
ENGINEERING
STUDIES
PLANNING
INVESTIGATION
EXPERT WITNESS

FLOOR
PLAN

CASEY CIVIL, LLC
LOT 2A
TERRACE AVE
SLIDELL, LA

REV:

SCALE: AS NOTED

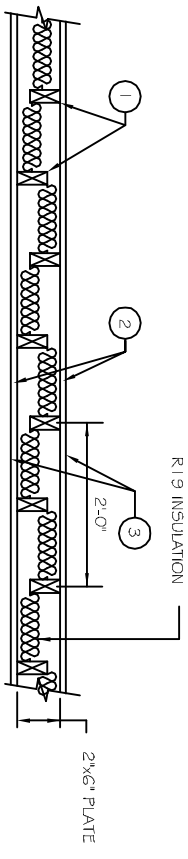
JOB#:

DATE: 06-15-11

SHEET 5

A-1

OF 12

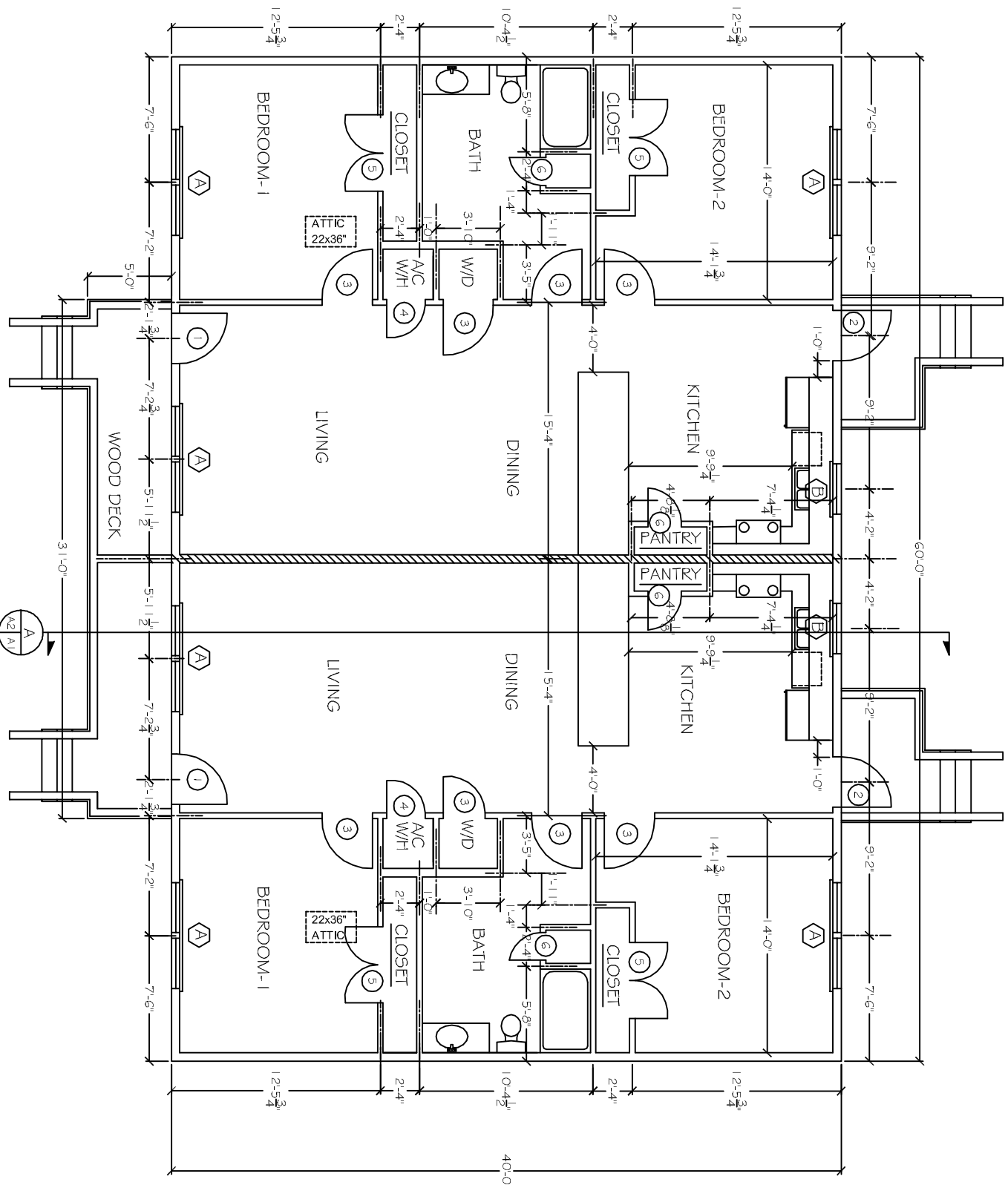
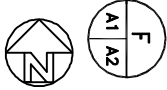


- WOOD STUDS- NOM. 2x4 IN. ALTERNATING ON OPPOSITE SIDES OF NOM. 2x6 WOOD PLATES SPACED 24" O.C. MAX ON EACH SIDE OF PLATE
- WALLBOARD GYPSUM 5/8" THICK WALLBOARD PAPER FACE, TAPERED EDGES. WALLBOARD NAILED TO EACH STUD 7" O.C. WITH 6d CEMENT COATED NAILS. 1 7/8" LONG. #6 BUGLE HEAD DRY WALL SCREWS MAY BE SUBSTITUTED FOR THE 6d CEMENT COATED NAILS, WHEN USED IN WIDTHS OTHER THAN 48". WALLBOARD TO BE INSTALLED HORIZONTALLY.
- JOINTS AND NAIL HEADS - WALLBOARD JOINTS COVERED WITH TAPE AND JOINT COMPOUND. NAIL HEADS COVERED WITH JOINT COMPOUND.

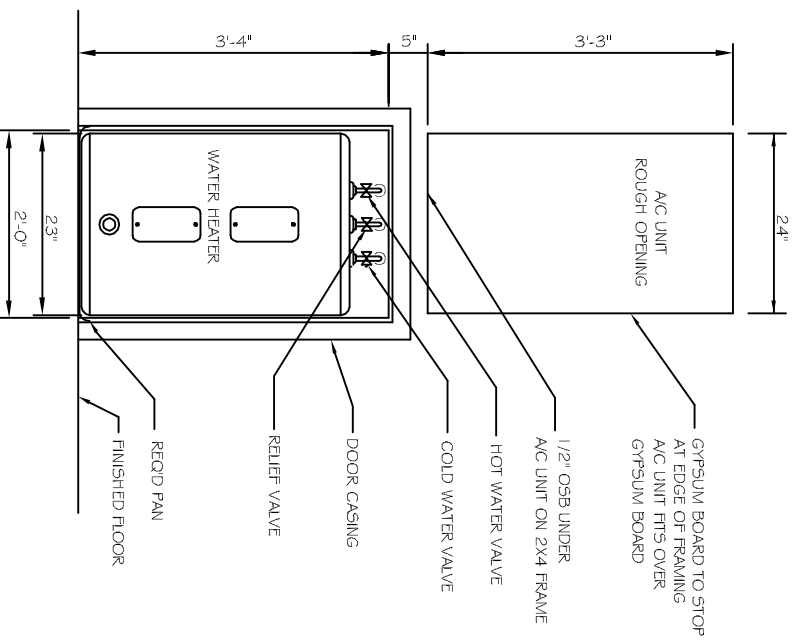
THE PARTY WALL IS TO EXTEND VERTICALLY FROM FIRST FLOOR TO BOTTOM OF ROOF SHEATHING.
FIRE RESISTANCE RATINGS ANSUL263 (BXUV)
DESIGN - U340 BEARING WALL RATING 1 HR

1 HR. PARTY WALLS

N.T.S.



FLOOR PLAN
SCALE: 1/4"=1'



HOT WATER HEATER/ AC UNIT ELEVATION

N.T.S.

