

**DAMMON**  
ENGINEERING, INC.

CHIEF ENGINEER  
EMMETT  
DAMMON, F.I.E.  
CHIEF ARCHITECT  
ROBERT  
WILTSE

1095 FLORIDA AVENUE  
SILVER LAKE, FL 34489  
OFFICE: 954-649-5892  
FAX: 954-641-5930

WWW.DAMMONENGINEERING.COM  
EMAIL: DAMMONEN@BELLFLOWER.NET

ARCHITECTURE  
ENGINEERING  
STUDIES  
PLANNING  
INVESTIGATION  
EXPERT WITNESSES

NEW  
APARTMENT  
COMPLEX

CROSSWINDS  
APARTMENTS  
HAMMOND, LA

LEASING BLDG./  
CLUBHOUSE  
FIRST FLOOR  
MECHANICAL PLAN

REV: 2-24-10

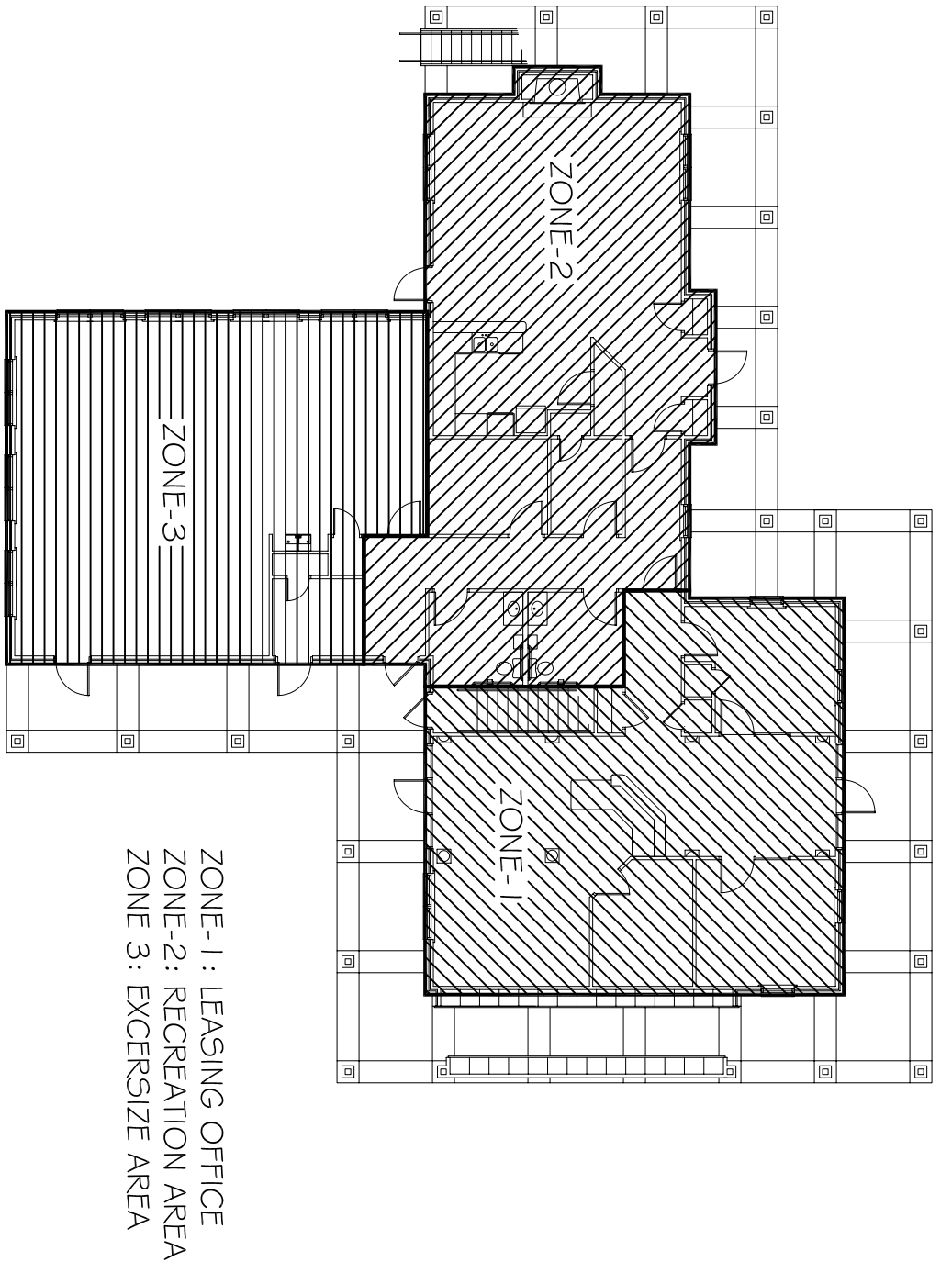
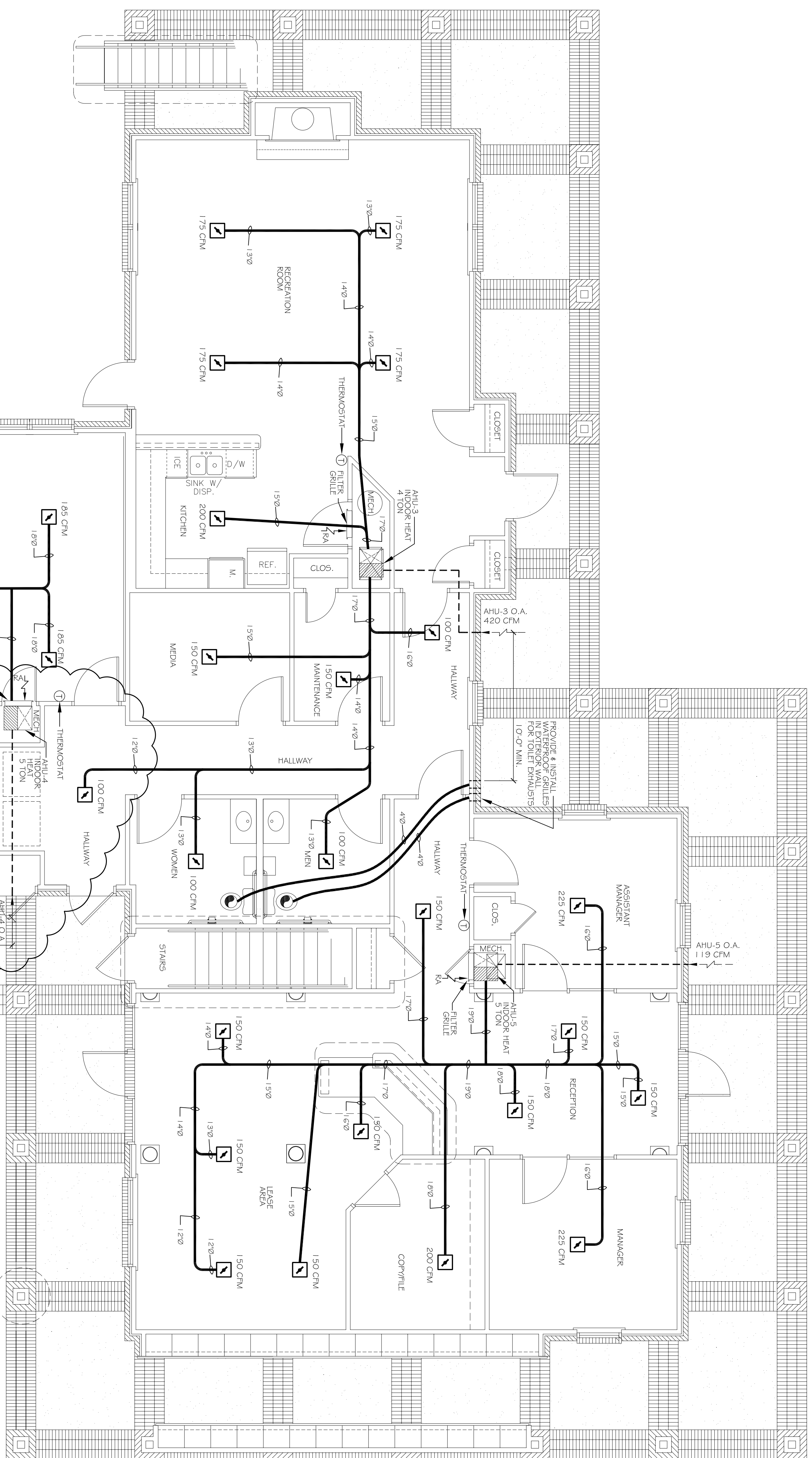
SCALE: AS NOTED

JOB#: 08112.13

DATE: 12-16-09

SHEET

M-5



ZONE 1: LEASING OFFICE  
ZONE 2: RECREATION AREA  
ZONE 3: EXCERSIZE AREA

LEASING BLDG./CLUBHOUSE  
1ST FLOOR MECHANICAL KEY PLAN  
SCALE: NTS

LEASING BLDG./CLUBHOUSE  
1ST FLOOR MECHANICAL PLAN  
SCALE: 1/4" = 1'-0"  
3,767 SQ. FT.

- LEGEND**
- SUPPLY AIR VENT WITH FIRE DAMPER, CEILING MOUNTED
  - RETURN AIR GRILLE, WALL MOUNTED BELOW HVAC CLOSEST DOOR, TYP. SEE PLAN FOR EXACT LOCATION
  - BATHROOM EXHAUST
  - THERMOSTAT

- HP-5  
5 TON  
TOTAL CAPACITY  
FOR BOARDING  
LARGE OFFICE
- HP-1  
2 TON  
TOTAL CAPACITY  
FOR UPSTAIRS  
LARGE OFFICE
- HP-3  
1 TON  
TOTAL CAPACITY  
FOR CONDENSING  
ROOM/STORAGE

HP-2  
3 TON  
TOTAL CAPACITY  
FOR BOARDING  
3 BR. APART

HP-4  
5 TON  
TOTAL CAPACITY  
FOR EXERCISE  
AREA

PROVIDE & INSTALL  
10" EXTERIOR WALLS  
FOR TOILET EXHAUSTS

PROVIDE & INSTALL  
10" EXTERIOR WALLS  
FOR TOILET EXHAUSTS