

DAMMON
ENGINEERING, INC.

CHIEF ENGINEER
EMMETT
DAMMON, F.T.E.
CHIEF ARCHITECT
ROBERT
WILTSE

1095 FLORIDA AVENUE
SUITE 111, LA 70438
OFFICE: 504.649.5892
FAX: 504.641.5930

WEBSITE:
WWW.DAMMONENGINEERING.COM
EMAIL: DAMMON@BLSGROUP.NET

ARCHITECTURE
ENGINEERING
STUDIES
PLANNING
INVESTIGATION
EXPERT WITNESS

NEW
APARTMENT
COMPLEX

CROSSWINDS
APARTMENTS
HAMMOND, LA

LEASING BLDG./
CLUBHOUSE
SECOND FLOOR
MECHANICAL PLAN

REV:

SCALE: AS NOTED

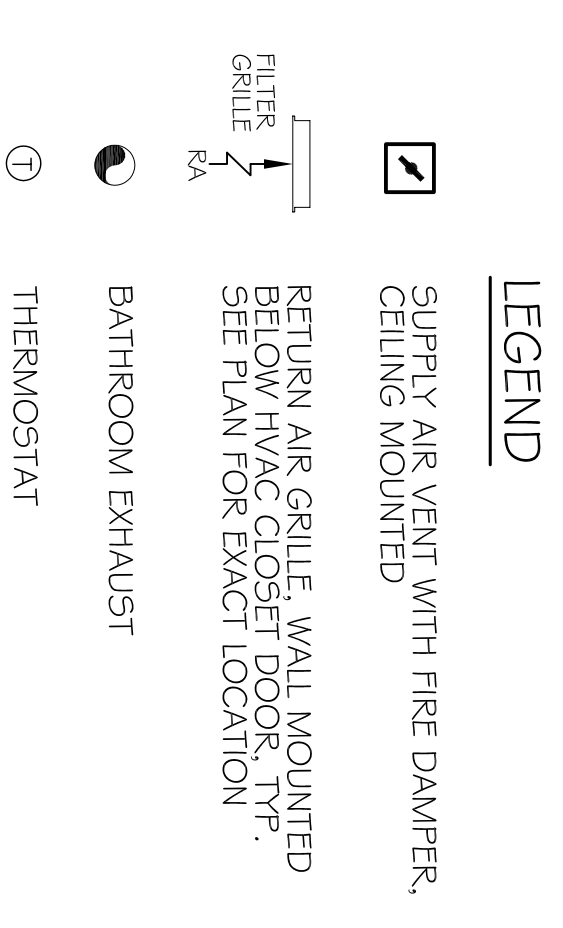
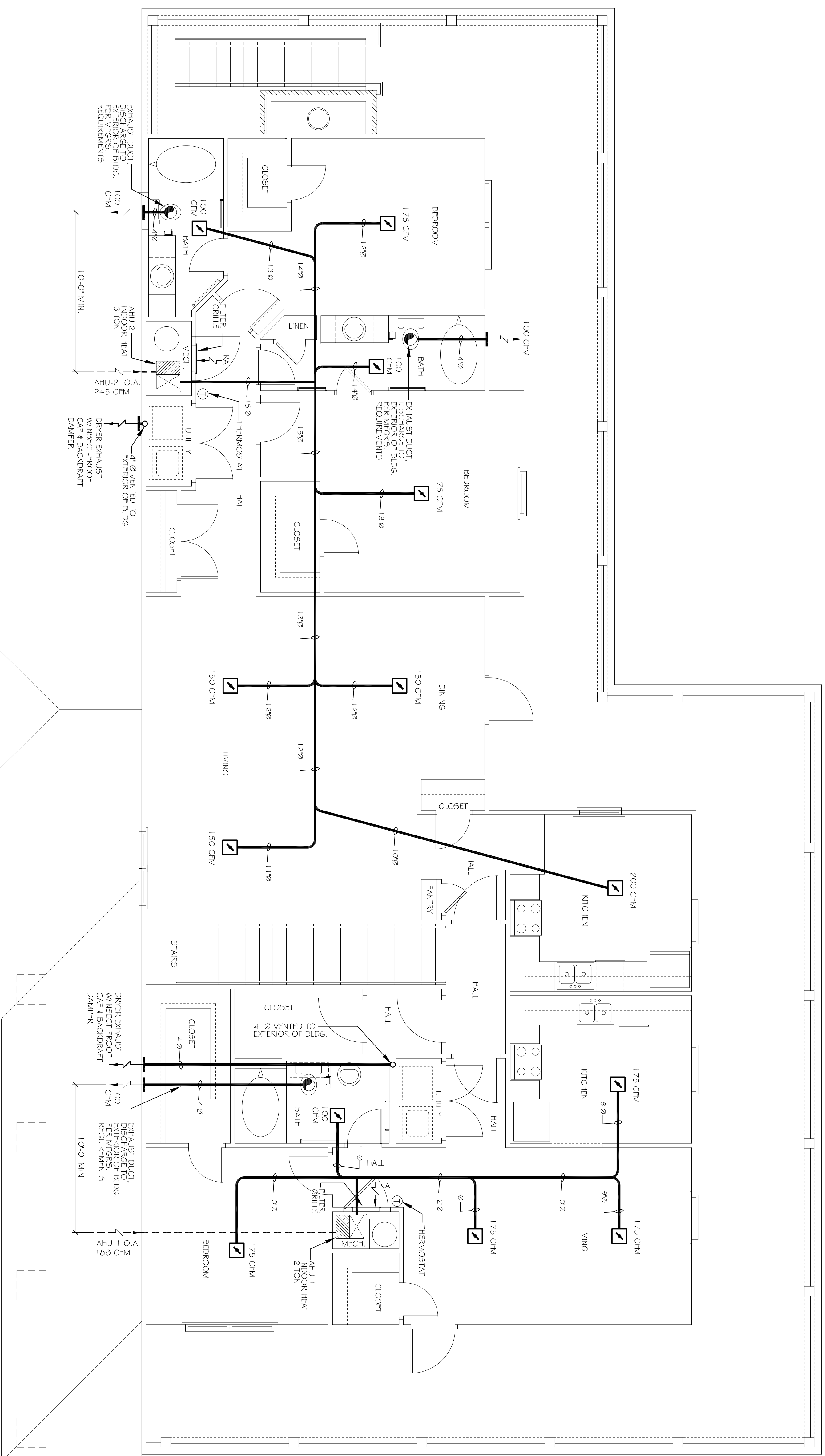
JOB#: 08112.13

DATE: 12-16-09

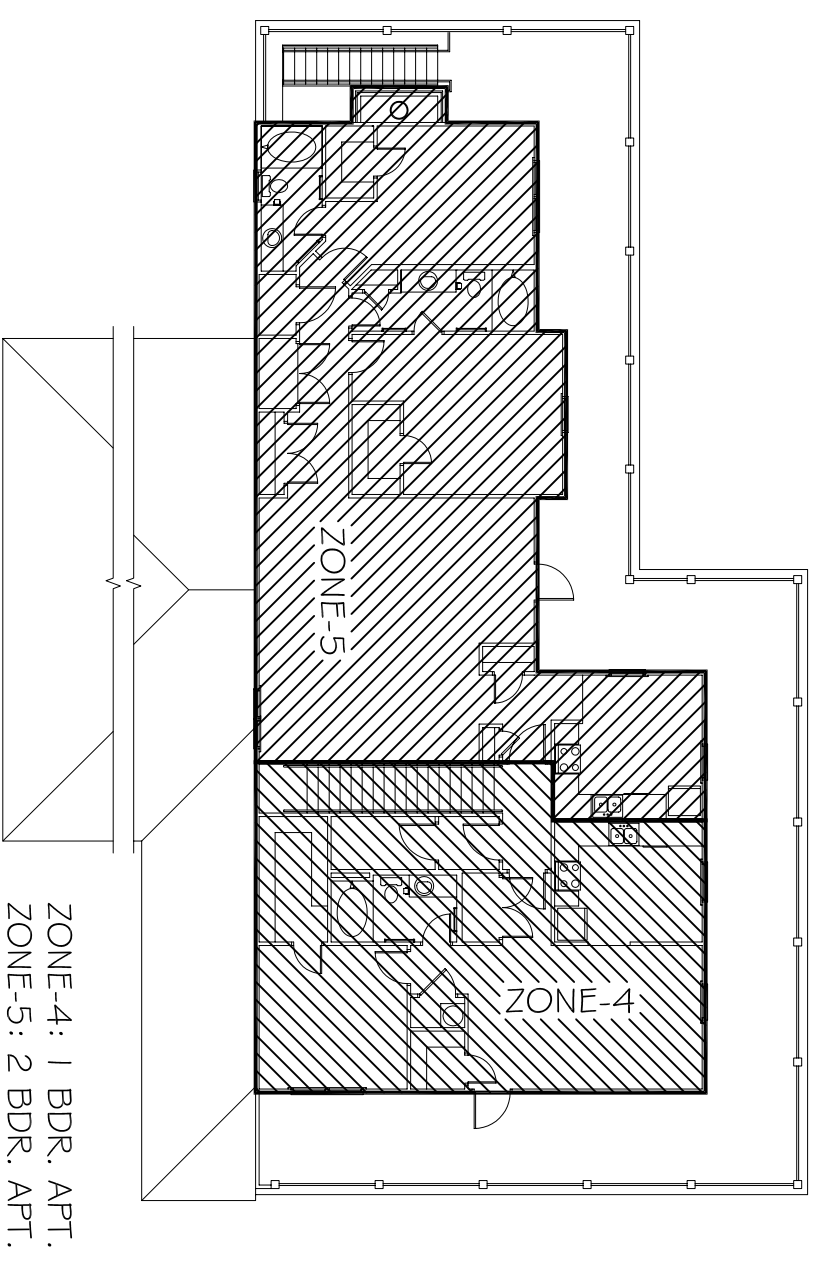
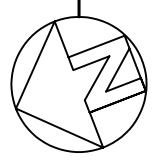
SHEET

M-6

OF



LEASING BLDG./CLUBHOUSE
2ND FLOOR MECHANICAL PLAN
SCALE: 1/4"=1'-0"
2,447 SQ. FT.



LEASING BLDG./CLUBHOUSE
2ND FLOOR MECHANICAL KEY PLAN
SCALE: NTS