

DAMMON
ENGINEERING, INC.

CHIEF ENGINEER
DAMIEN FLETCHER
DAMMON, F.L.E.
CHIEF ARCHITECT
ROBERT WILTSE

1095 FLORIDA AVENUE
SUITE 111, LA 70455
OFFICE 504-649-5892
FAX 504-641-5930

WEBSITE:
WWW.DAMMONENGINEERING.COM
EMAIL:
DAMMONEN@BLSOLUTIONS.NET

ARCHITECTURE
ENGINEERING
STUDIES
PLANNING
INVESTIGATION
EXPERT WITNESS

NEW
APARTMENT
COMPLEX

CROSSWINDS
APARTMENTS
HAMMOND, LA

BLDG. 1, 2, 3,
5 & 6
PLUMBING
PLAN ENTRANCE

REV: 1-15-10

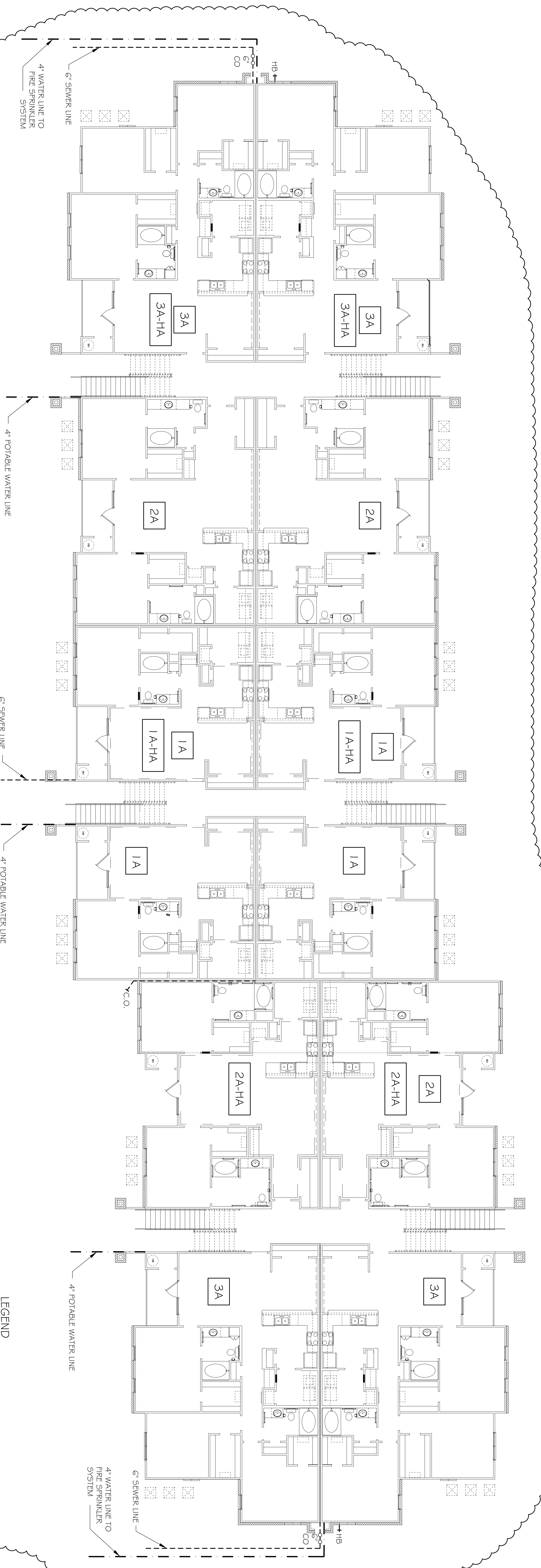
SCALE: AS NOTED

JOB#: 08112.13

DATE: 12-16-09

SHEET

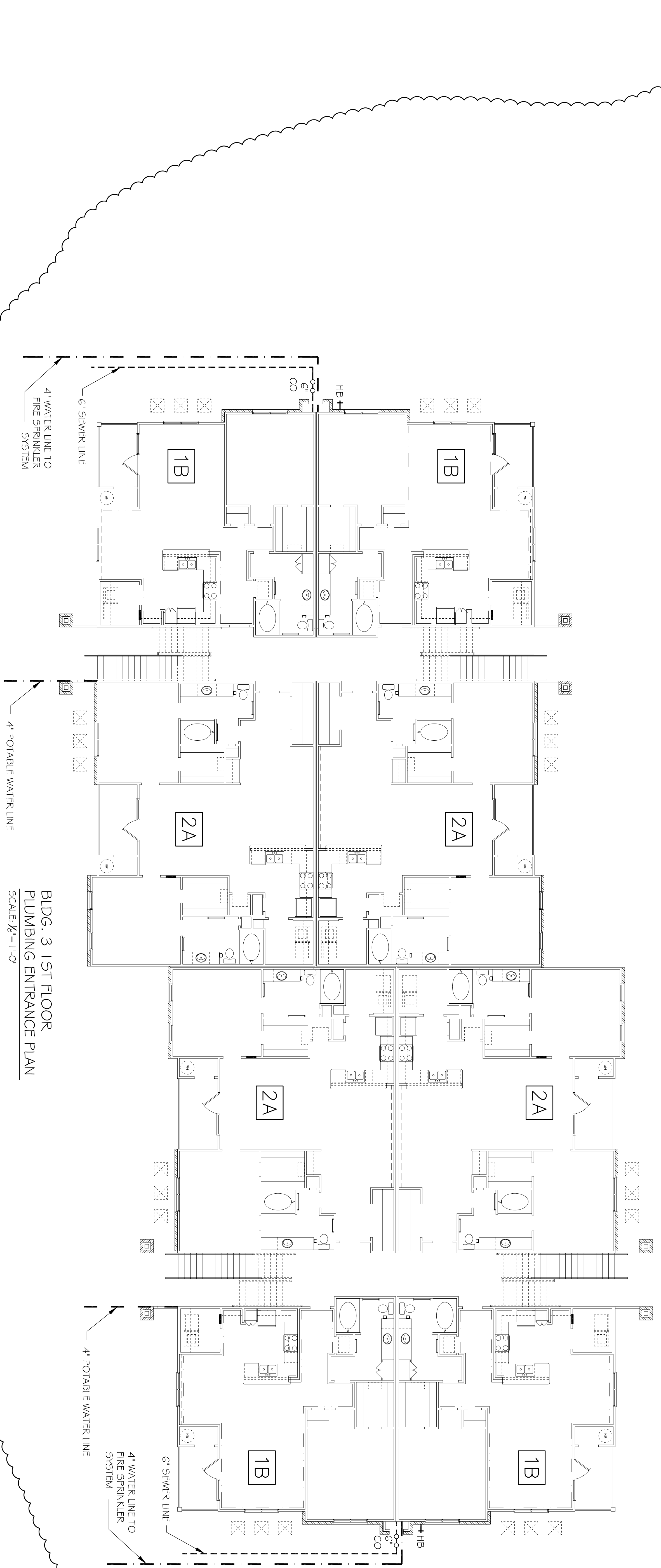
P-2



BLDG. 1, 2, 5 & 6, 1ST FLOOR
PLUMBING PLAN ENTRANCE
SCALE: 1/8" = 1'-0"

LEGEND
 --- POTABLE WATER LINE
 - - - - - SANITARY SEWER LINE

NOTES
 FOR INDIVIDUAL UNITS HOT & COLD
 WATER LINES, SEE SHTS. P-3 & P-5.
 FOR INDIVIDUAL UNITS SEWER LINES,
 SEE SHTS. P-4 & P-6.



BLDG. 3, 1ST FLOOR
PLUMBING PLAN ENTRANCE
SCALE: 1/8" = 1'-0"