

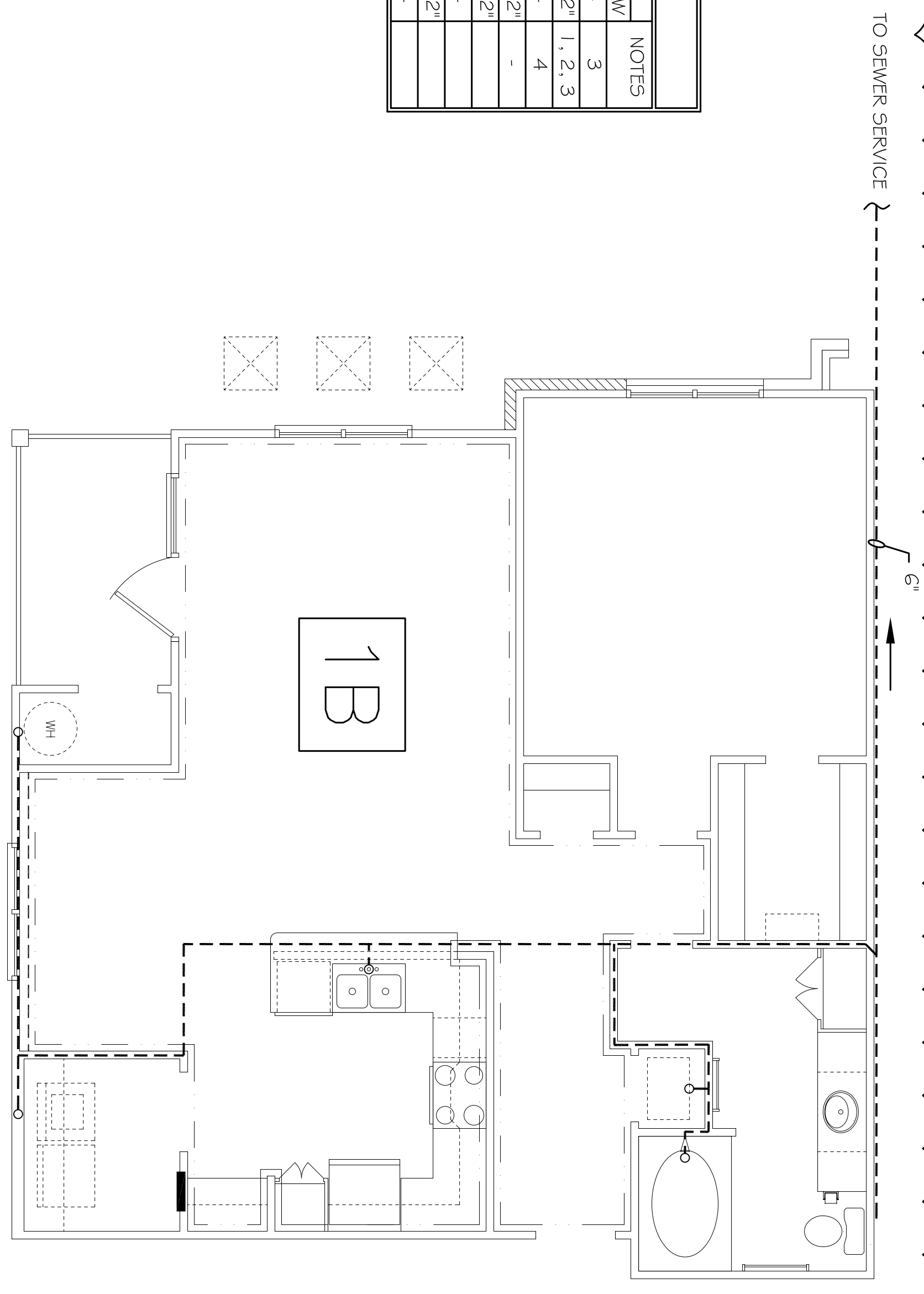
UNIT 1A SEWER PLUMBING PLAN
SCALE: 1/4"=1'-0"

MARK	DESCRIPTION	TYPE	ROUGH-IN SIZES			NOTES
WC	WATER CLOSET	VALVE	4"	4"	1/2"	3
LAV	LAVATORY	WALL HUNG	2"	2"	1/2"	1, 2, 3
F.D.	FLOOR DRAIN	-	2"	2"	1/2"	4
KS	KITCHEN	-	2"	2"	1/2"	1/2"
BT	BATH TUB	-	2"	2"	1/2"	1/2"
ICM	ICE MAKER	-	2"	2"	1/2"	1/2"
WASH	WASHING MACHINE	-	2"	2"	1/2"	1/2"
AHU COND	AIR HANDLING UNIT	-	2"	2"	1/2"	1/2"

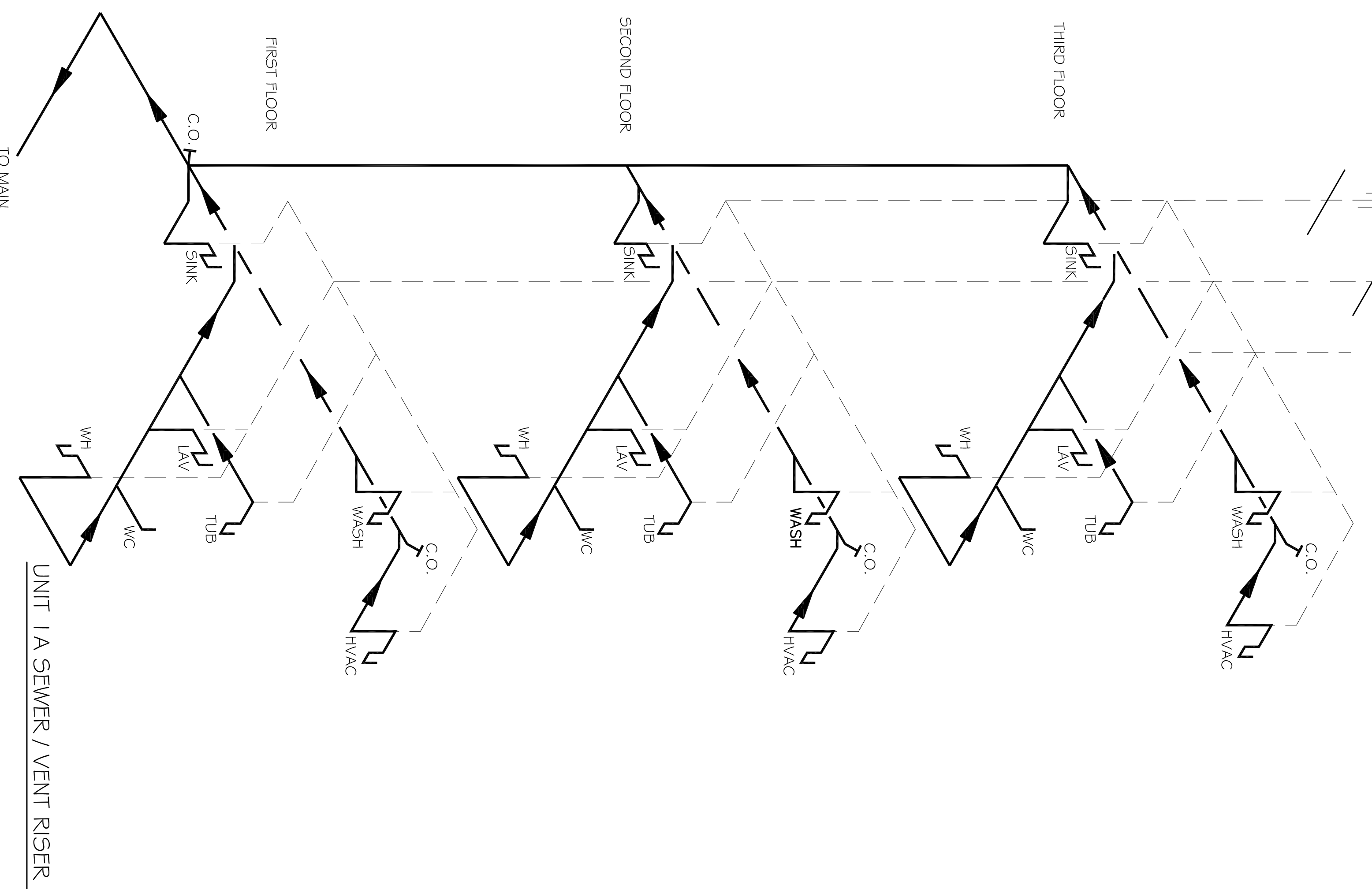
- NOTES:
1. INSULATE PIPING FOR HANDICAP FIXTURE.
 2. PROVIDE CHAIR CARRIER FOR WALL HUNG FIXTURE.
 3. H.C. - HANDICAP FIXTURE WHERE APPLICABLE.
 4. INSTALL CONTINUOUS DRIP VALVE ON ALL FLOOR DRAINS.

LEGEND

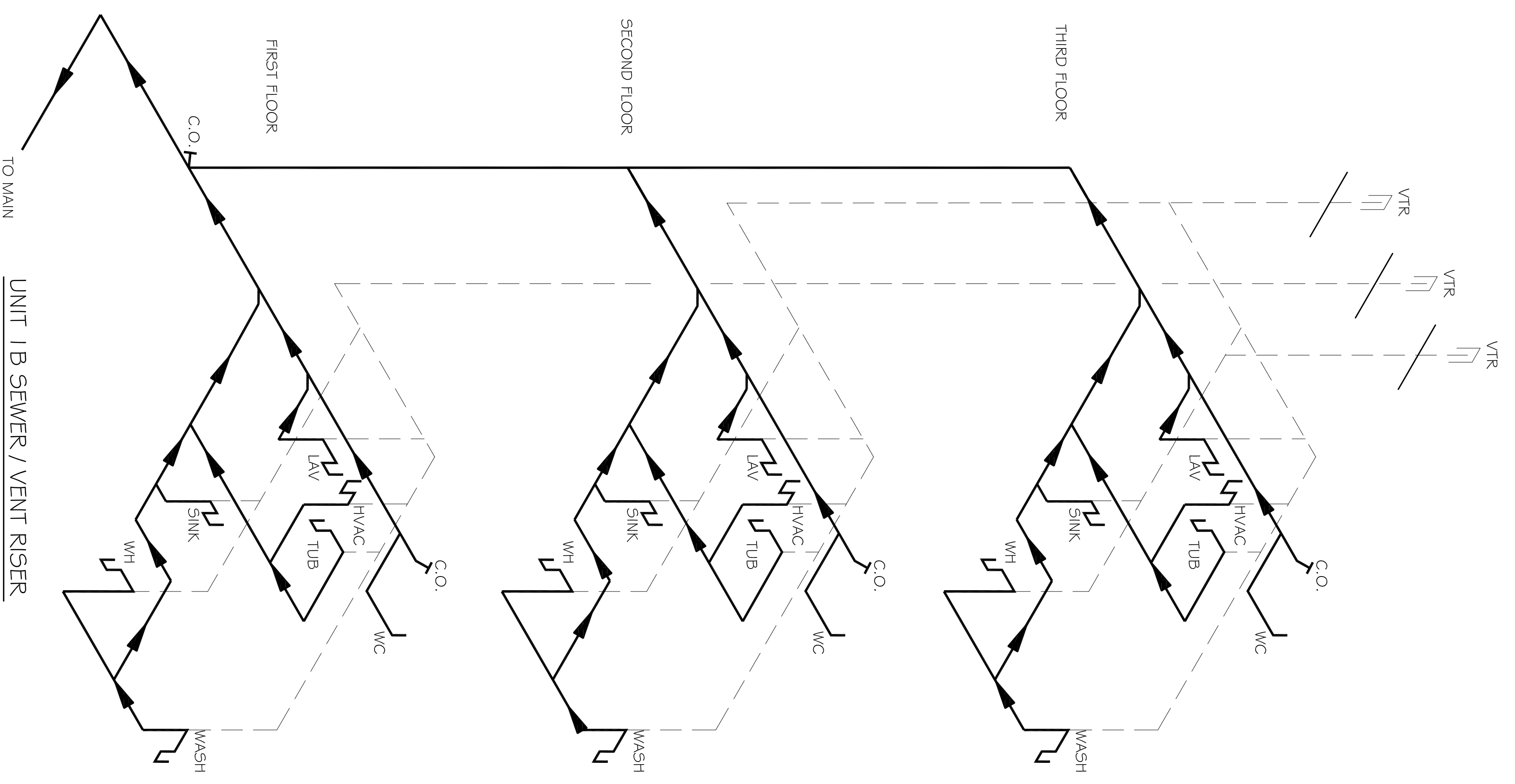
--- SANITARY SEWER LINE



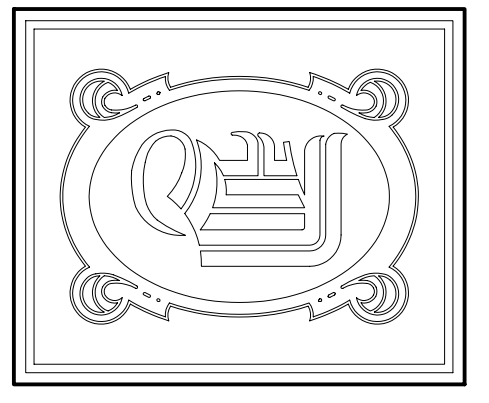
UNIT 1B SEWER PLUMBING PLAN
SCALE: 1/4"=1'-0"



UNIT 1A SEWER / VENT RISER



UNIT 1B SEWER / VENT RISER



DAMMON
ENGINEERING, INC.

CHIEF ENGINEER
DAMIEN DAMMON, F.T.E.
CHIEF ARCHITECT
ROBERT WILTSE

1095 FLORIDA AVENUE
SUITE 111, LA 70455
OFFICE: 504.649.5892
FAX: 504.641.5930

WWW.DAMMONENGINEERING.COM
EMAIL: DAMON@DAMMONENGINEERING.COM
DAMMONENR@BLSGROUP.NET

ARCHITECTURE
ENGINEERING
STUDIES
PLANNING
INVESTIGATION
EXPERT WITNESSES

NEW
APARTMENT
COMPLEX

CROSSWINDS
APARTMENTS
HAMMOND, LA

UNITS 2A & 3A
SEWER PLUMBING
PLAN & RISERS

REV: 1-15-10

SCALE: AS NOTED
JOB#: 08112.13
DATE: 12-16-09
SHEET