

DAMMON
ENGINEERING, INC.

CHIEF ENGINEER
EMMETT
DAMMON, F.T.E.
CHIEF ARCHITECT
ROBERT
WILTSE

1095 FLORIDA AVENUE
SUITE 111, LA. 70455
OFFICE 504-649-5892
FAX: 504-641-5930

WEBSITE:
WWW.DAMMONENGINEERING.COM
EMAIL:
DAMMONEN@BLSOLUTIONS.NET

ARCHITECTURE
ENGINEERING
STUDIES
PLANNING
INVESTIGATION
EXPERT WITNESS

NEW
APARTMENT
COMPLEX

CROSSWINDS
APARTMENTS
HAMMOND, LA

UNITS 2A & 3A
WATER PLUMBING
PLAN & RISERS

REV: 1-15-10

SCALE: AS NOTED

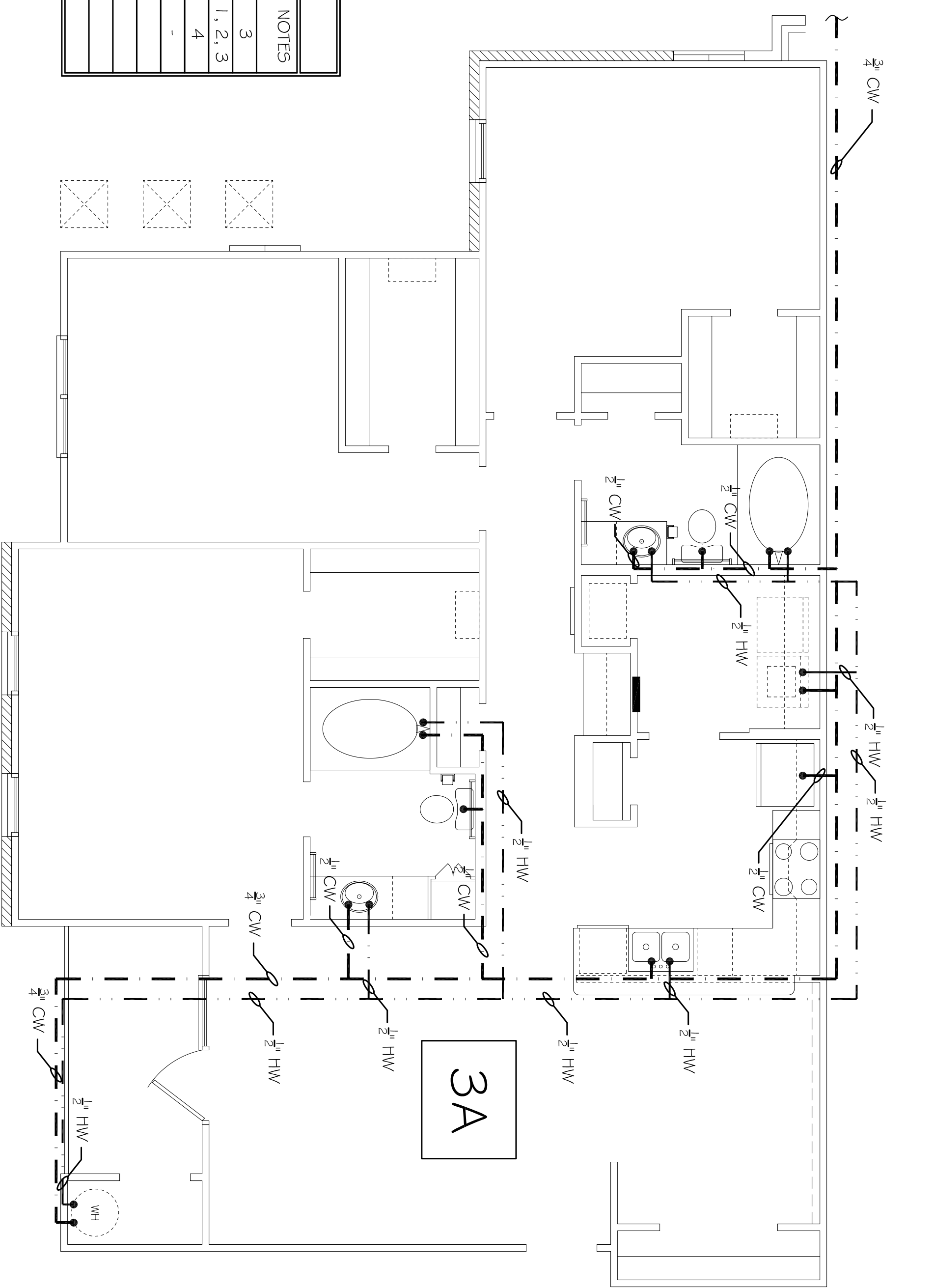
JOB#: 08112.13

DATE: 12-16-09

SHEET

P-5

OF

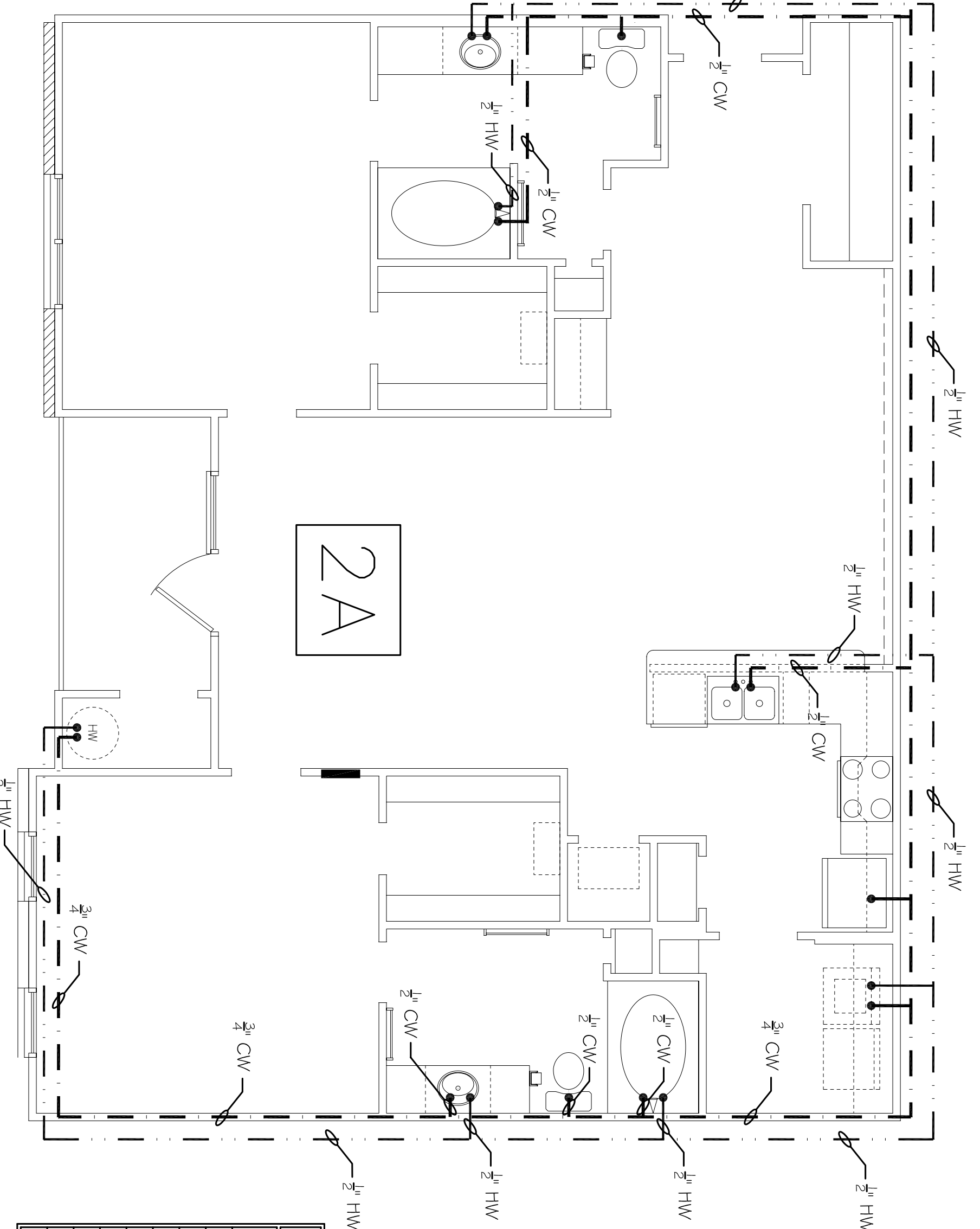


UNIT 3A WATER PLUMBING PLAN
SCALE: 1/4"=1'-0"

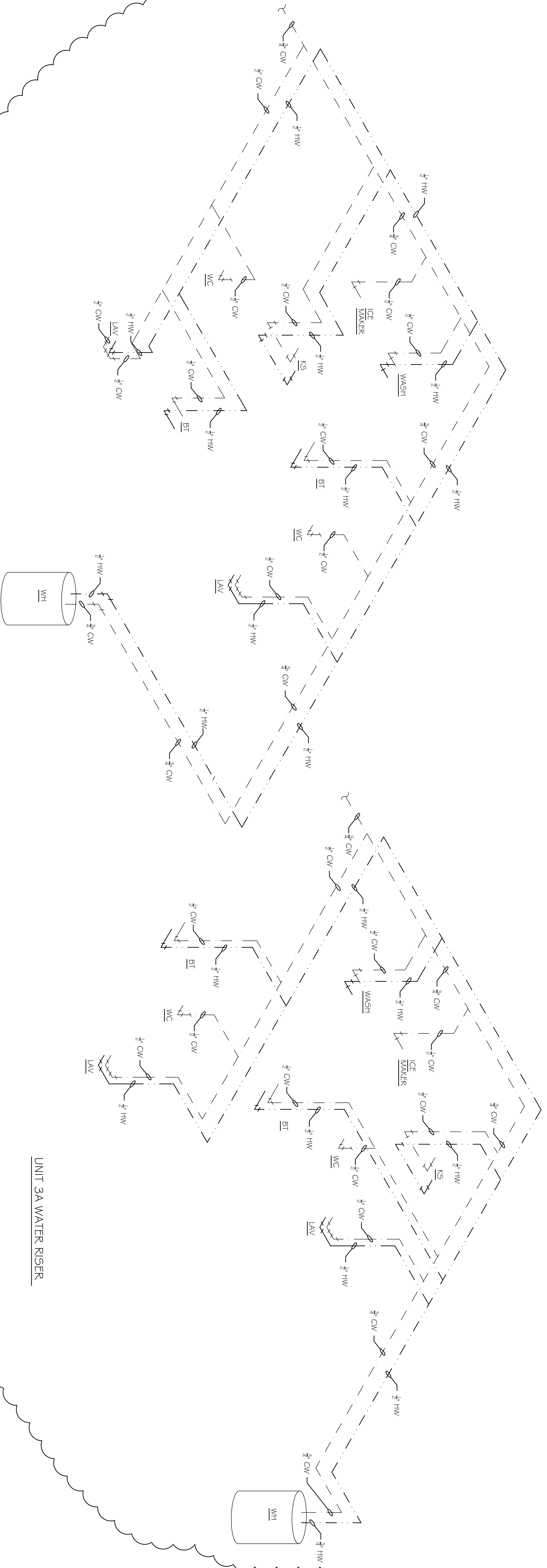
MARK	DESCRIPTION	TYPE	ROUGH-IN SIZES			NOTES
			WASTE	VENT	CW	
WC	WATER CLOSET	VALVE	4"	4"	1/2"	3
LAV	LAVATORY	WALL HUNG	2"	1/2"	1/2"	1, 2, 3
F.D.	FLOOR DRAIN	-	2"	1/2"	1/2"	4
KS	KITCHEN	-	2"	1/2"	1/2"	-
BT	BATH TUB	-	2"	1/2"	1/2"	-
ICM	ICE MAKER	-	2"	1/2"	1/2"	-
WASH	WASHING MACHINE	-	2"	1/2"	1/2"	-
AHU COND	AIR HANDLING UNIT	-	2"	1/2"	1/2"	-

- NOTES:
1. INSTALL PIPING FOR HANDICAP FIXTURE.
2. PROVIDE CHAIR CARRIER FOR WALL HUNG FIXTURE.
3. H.C. - HANDICAP FIXTURE WHERE APPLICABLE.
4. INSTALL CONTINUOUS DRIP VALVE ON ALL FLOOR DRAINS.

LEGEND
--- PORTABLE WATER LINE
--- HOT WATER LINE



UNIT 2A WATER PLUMBING PLAN
SCALE: 1/4"=1'-0"



UNIT 3A WATER RISER

UNIT 2A WATER RISER