

DAMMON
ENGINEERING, INC.

CHIEF ENGINEER
DAMIEN DAMMON, P.E.
CHIEF ARCHITECT
ROBERT WILTSE

1095 FLORIDA AVENUE
SUITE 111, L.A. 70455
OFFICE: 504.649.5892
FAX: 504.641.5930

WEBSITE:
WWW.DAMMONENGINEERING.COM
EMAIL:
DAMMONENR@BLSBOUTIN.NET

ARCHITECTURE
ENGINEERING
STUDIES
PLANNING
INVESTIGATION
EXPERT WITNESSES

NEW
APARTMENT
COMPLEX

CROSSWINDS
APARTMENTS
HAMMOND, LA

LEASING BLDG.
WATER
PLUMBING PLAN
AND RISERS

REV: 1-15-10

SCALE: AS NOTED

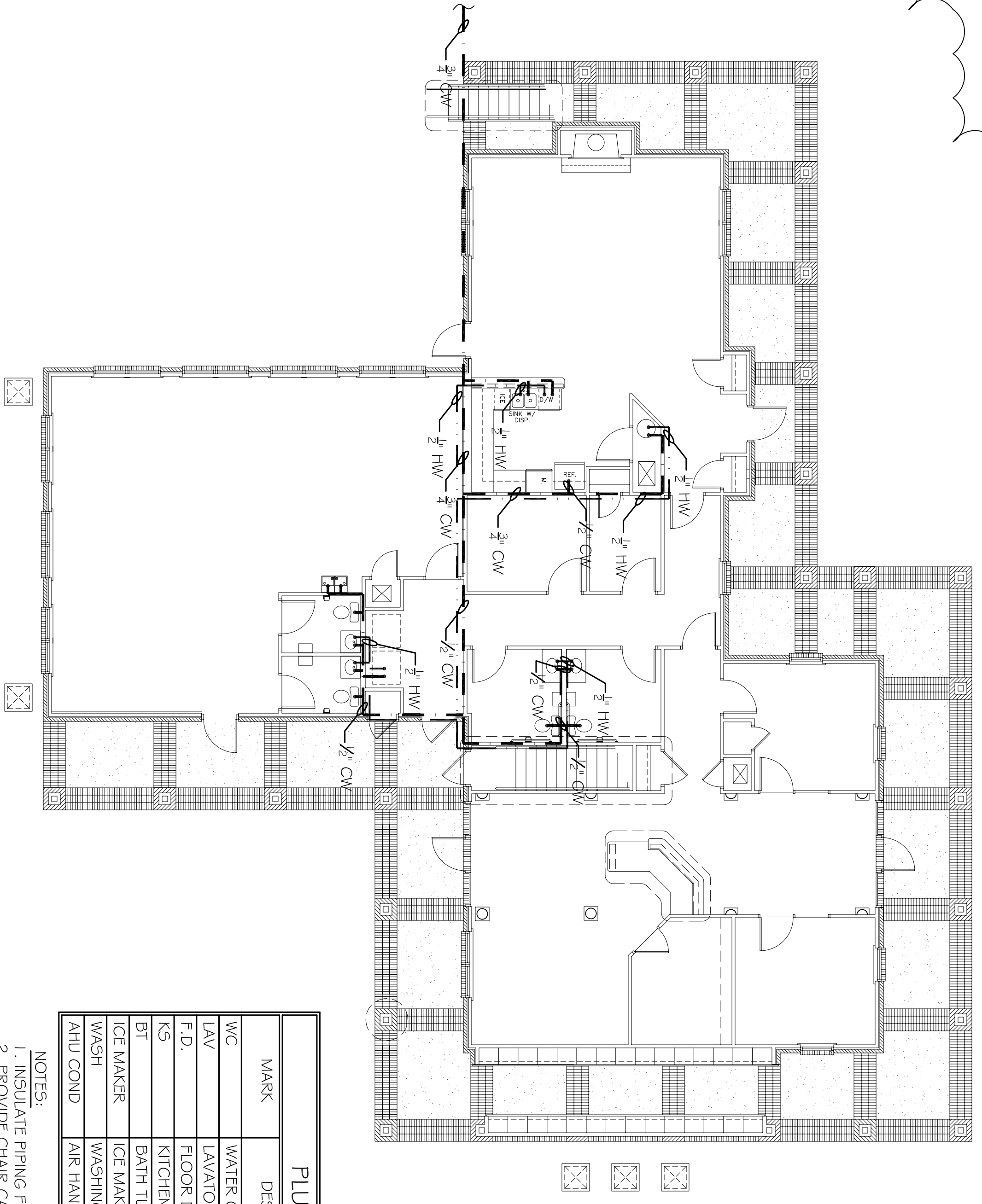
JOB#: 08112.13

DATE: 12-16-09

SHEET

P-7

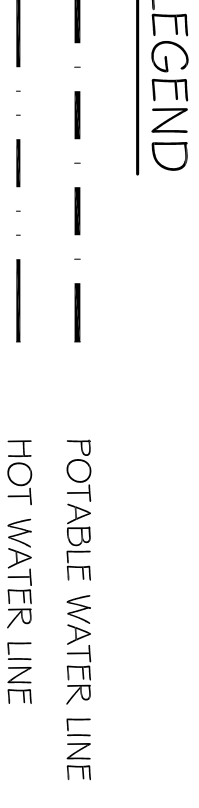
OF



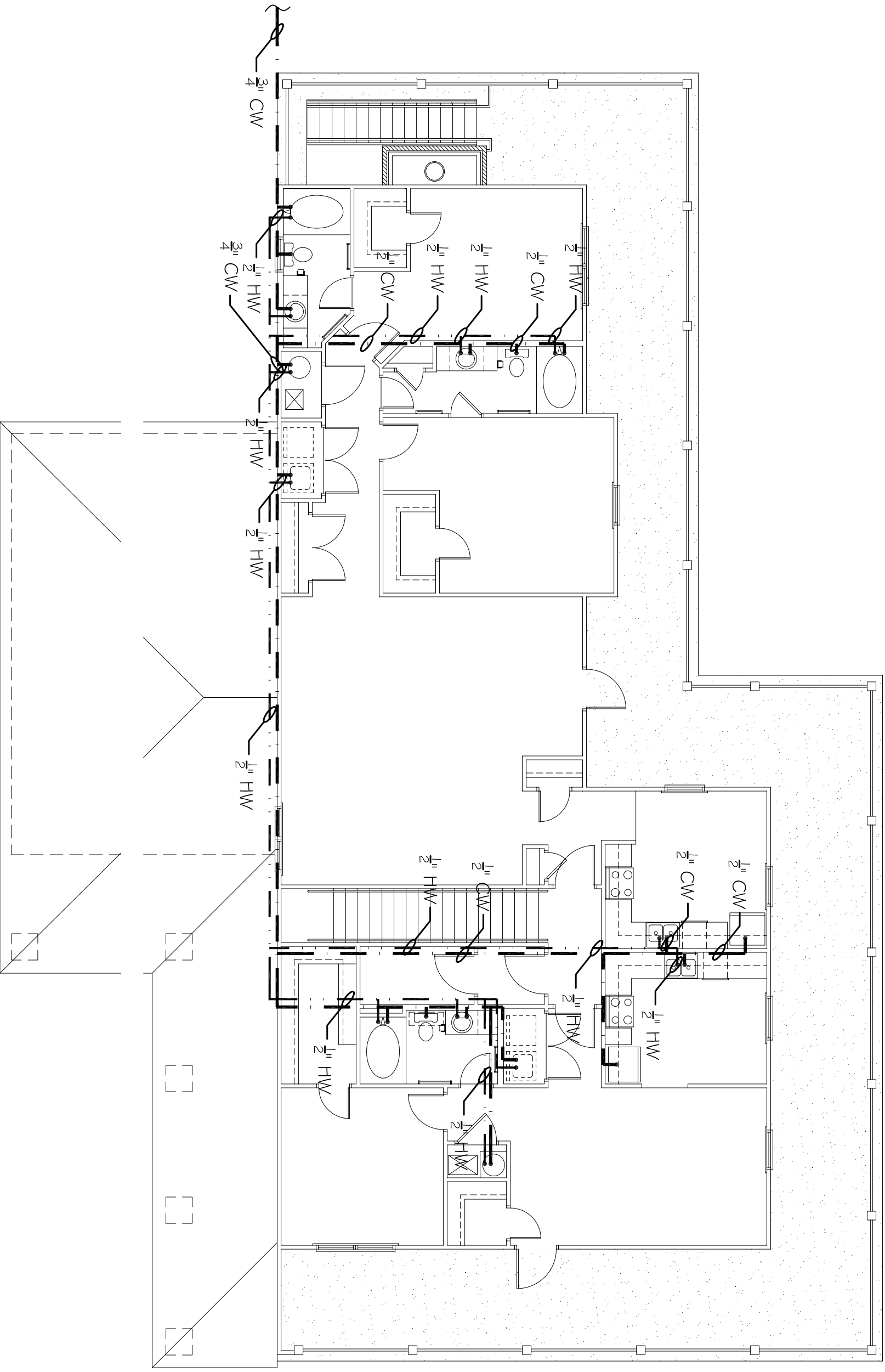
LEASING BLDG. 1ST FLOOR
WATER PLUMBING PLAN
SCALE: 1/8" = 1'-0"

MARK	DESCRIPTION	TYPE	ROUGH-IN SIZES	NOTES
WC	WATER CLOSET	VALVE	4" 1/2"	3
LAV	LAVATORY	WALL HUNG	2" 1/2" 1/2"	1, 2, 3
F.D.	FLOOR DRAIN	-	2" 1/2" 1/2"	4
KS	KITCHEN	-	2" 1/2" 1/2"	-
BT	BATH TUB	-	2" 1/2" 1/2"	-
ICE WAKER	ICE WAKER	-	2" 1/2" 1/2"	-
WASH	WASHING MACHINE	-	2" 1/2" 1/2"	-
AHU COND	AIR HANDLING UNIT	-	2" 1/2" 1/2"	-

- NOTES:
 1. INSULATE PIPING FOR HANDICAP FIXTURE.
 2. INSULATE PIPING FOR SENSITIVE FIXTURE.
 3. PROVIDE DRAIN PIPING WHERE APPLICABLE.
 4. INSTALL CONTINUOUS DRAIN VALVE ON ALL FLOOR DRAINS.



1ST FLOOR WATER RISER



LEASING BLDG. 2ND FLOOR
WATER PLUMBING PLAN
SCALE: 1/8" = 1'-0"

2ND FLOOR WATER RISER

