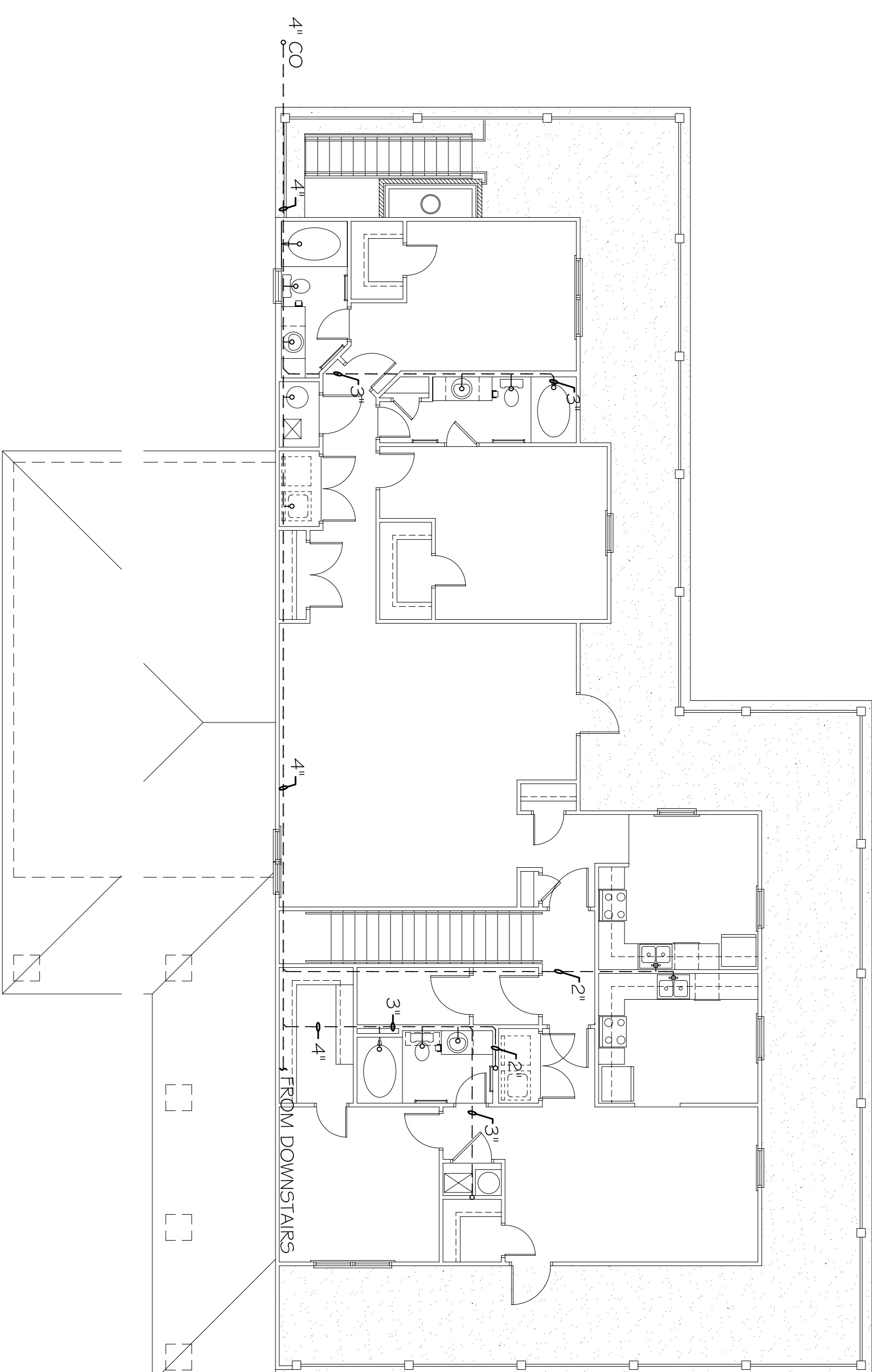
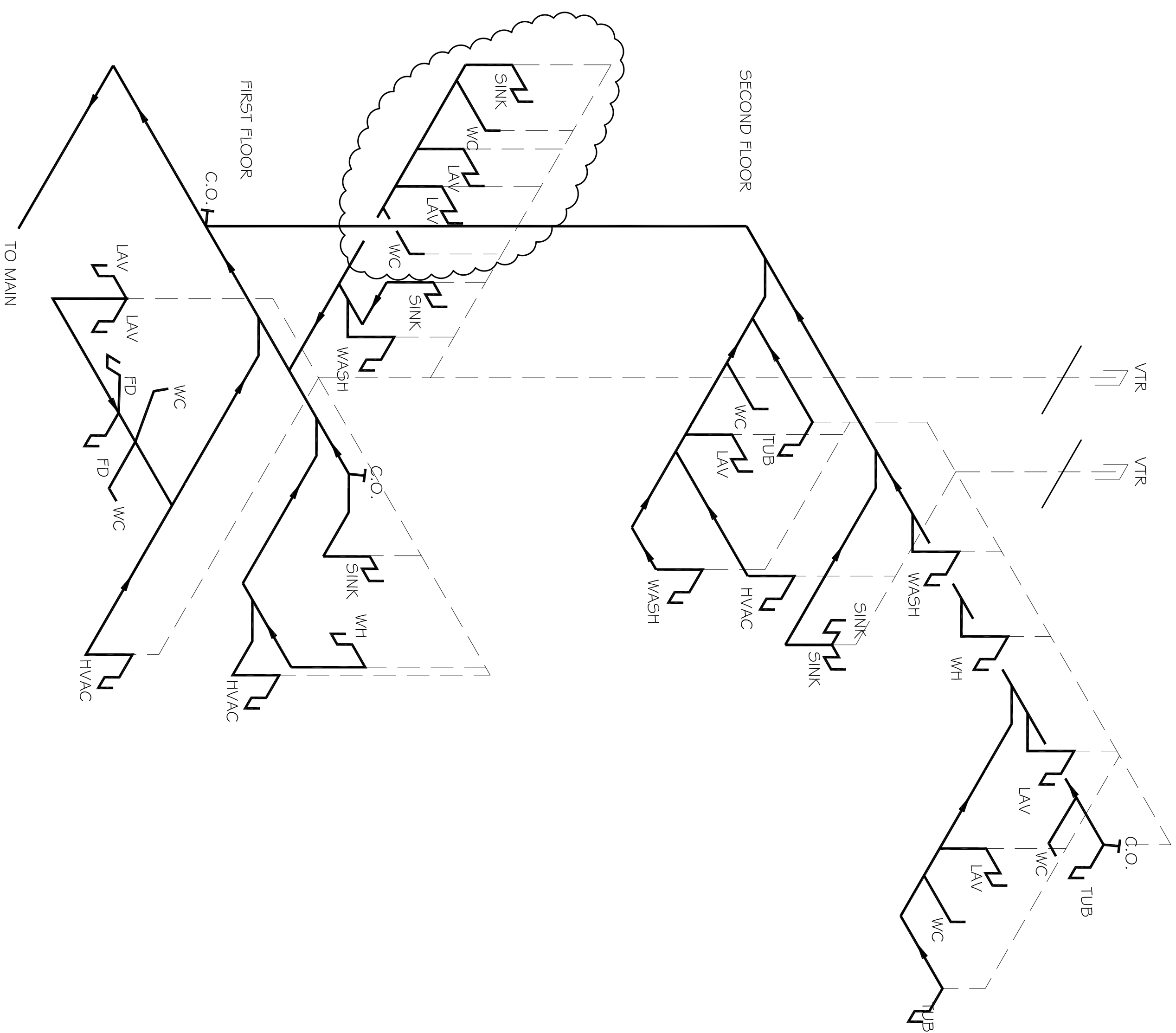


LEASING BLDG. 1ST FLOOR
SEWER PLUMBING PLAN
SCALE: 1/8" = 1'-0"



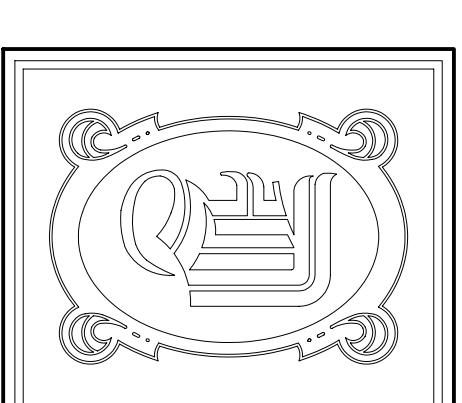
LEASING BLDG. 2ND FLOOR
SEWER PLUMBING PLAN
SCALE: 1/8" = 1'-0"

LEGEND
----- SANITARY SEWER LINE



| PLUMBING FIXTURE SCHEDULE | | | | |
|---------------------------|-------------------|-----------|------------------|---------|
| MARK | DESCRIPTION | TYPE | ROUGH-IN SIZES | NOTES |
| WC | WATER CLOSET | VALVE | 4" / 1/2" | 3 |
| LAV | LAVATORY | WALL HUNG | 2" / 1/2" / 1/2" | 1, 2, 3 |
| F.D. | FLOOR DRAIN | - | 2" / 1/2" | 4 |
| KS | KITCHEN | - | 2" / 1/2" / 1/2" | - |
| BT | BATH TUB | - | 2" / 1/2" / 1/2" | - |
| ICE MAKER | ICE MAKER | - | 2" / 1/2" | - |
| WASH | WASHING MACHINE | - | 2" / 1/2" / 1/2" | - |
| AHU COND | AIR HANDLING UNIT | - | 2" / 1/2" / 1/2" | - |

- NOTES:
 1. INSULATE PIPING FOR HANDICAP FIXTURE.
 2. PROVIDE CHAIR CARISER FOR WALL HUNG FIXTURE.
 3. H.C. - HANDICAP FIXTURE WHERE APPLICABLE
 4. INSTALL CONTINUOUS DRIP VALVE ON ALL FLOOR DRAINS.



DAMMON
ENGINEERING, INC.

CHIEF ENGINEER
EMMETT
DAMMON, F.I.E.
CHIEF ARCHITECT
ROBERT
WILTSE

1095 FLORIDA AVENUE
SUITE 114, LA 70455
OFFICE: 504-649-5892
FAX: 504-641-5950

WWW.DAMMONENGINEERING.COM
EMAIL: DMAIL@DAMMONENR.COM
DAMMONENR@BLSBOUTLINE.NET

ARCHITECTURE
ENGINEERING
STUDIES
PLANNING
INVESTIGATION
EXPERT WITNESSES

NEW
APARTMENT
COMPLEX

CROSSWINDS
APARTMENTS
HAMMOND, LA

LEASING BLDG.
SEWER
PLUMBING PLAN
AND RISERS

REV: 1-15-10
2-24-10
SCALE: AS NOTED
JOB#: 08112.13
DATE: 12-16-09
SHEET