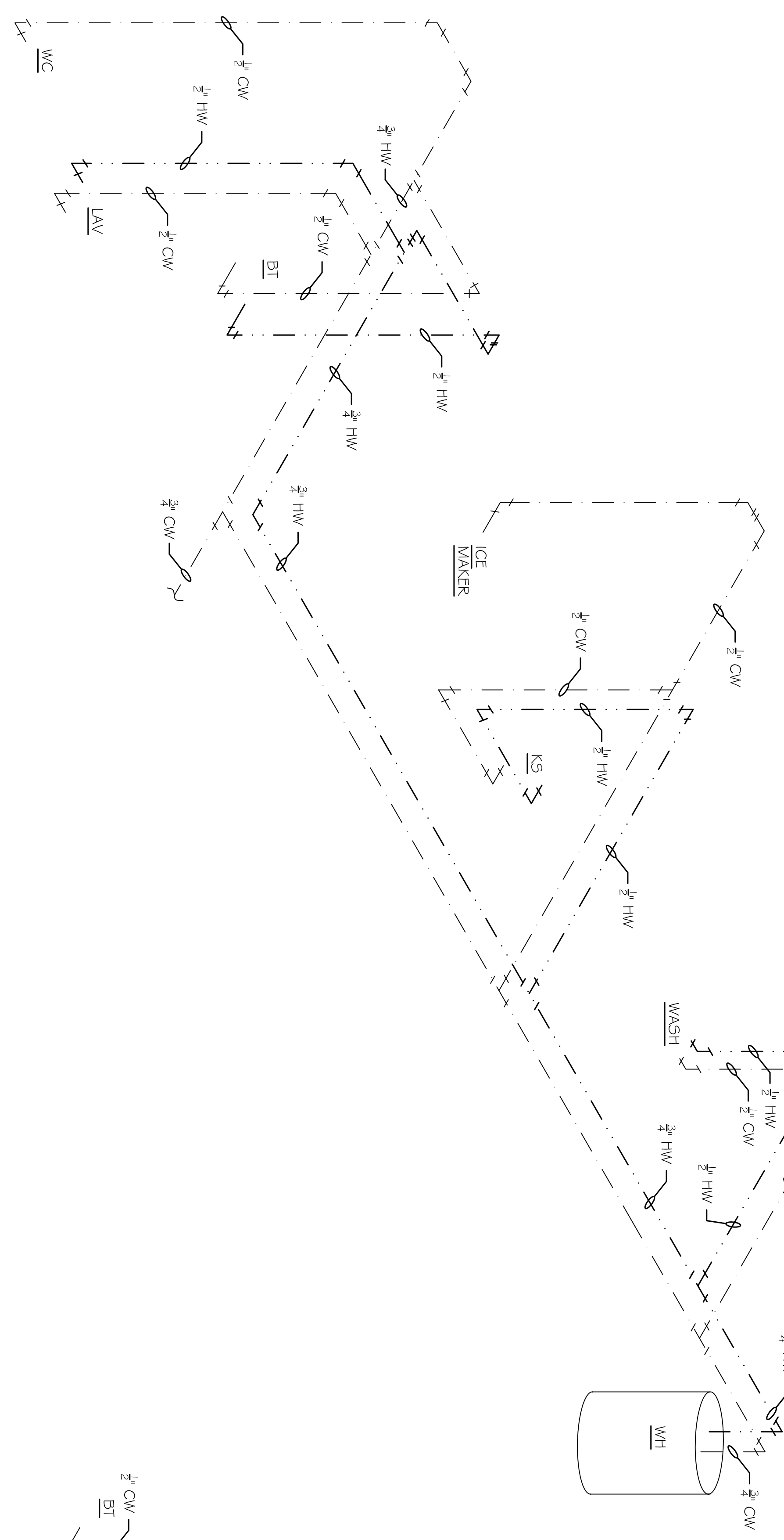
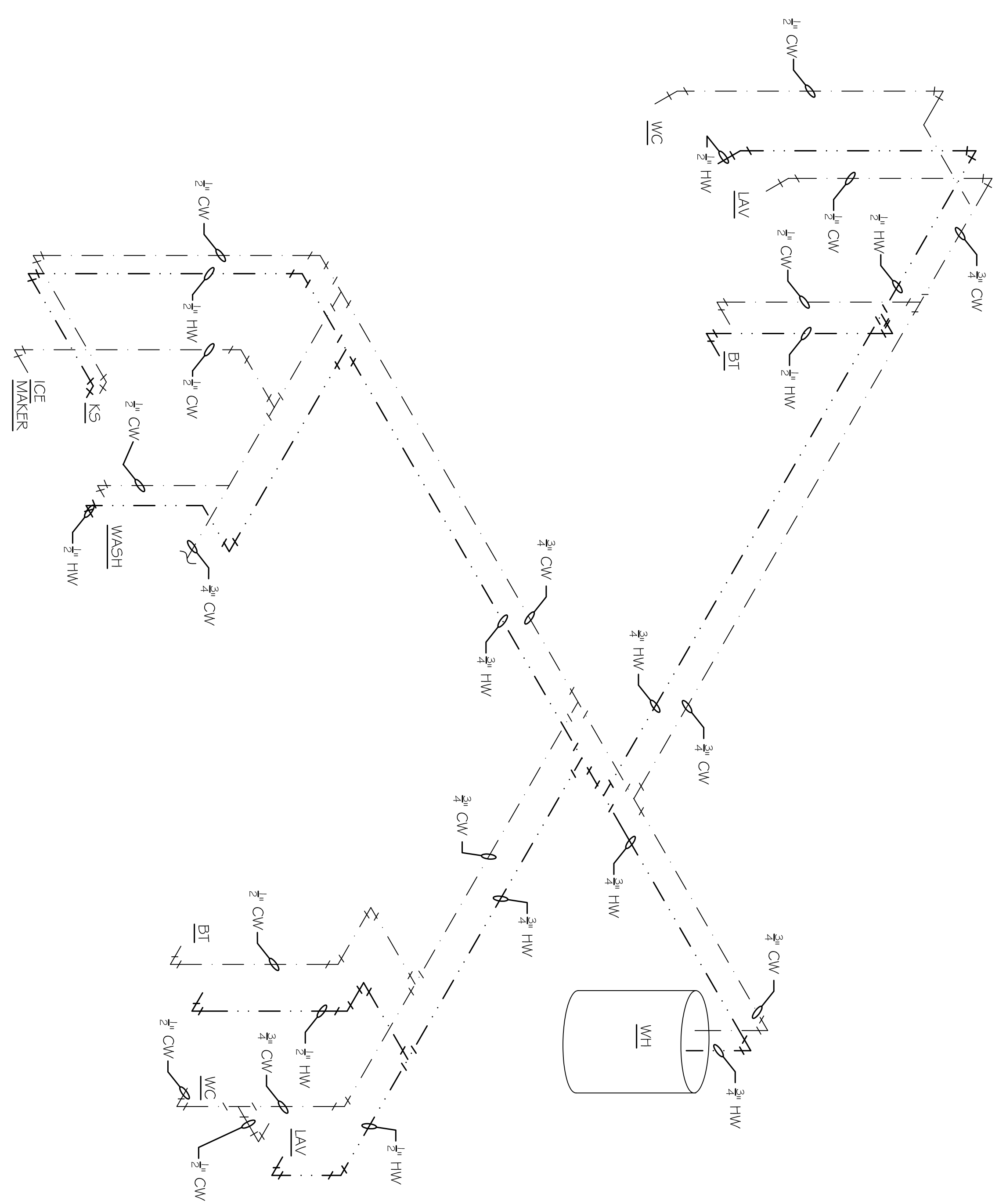


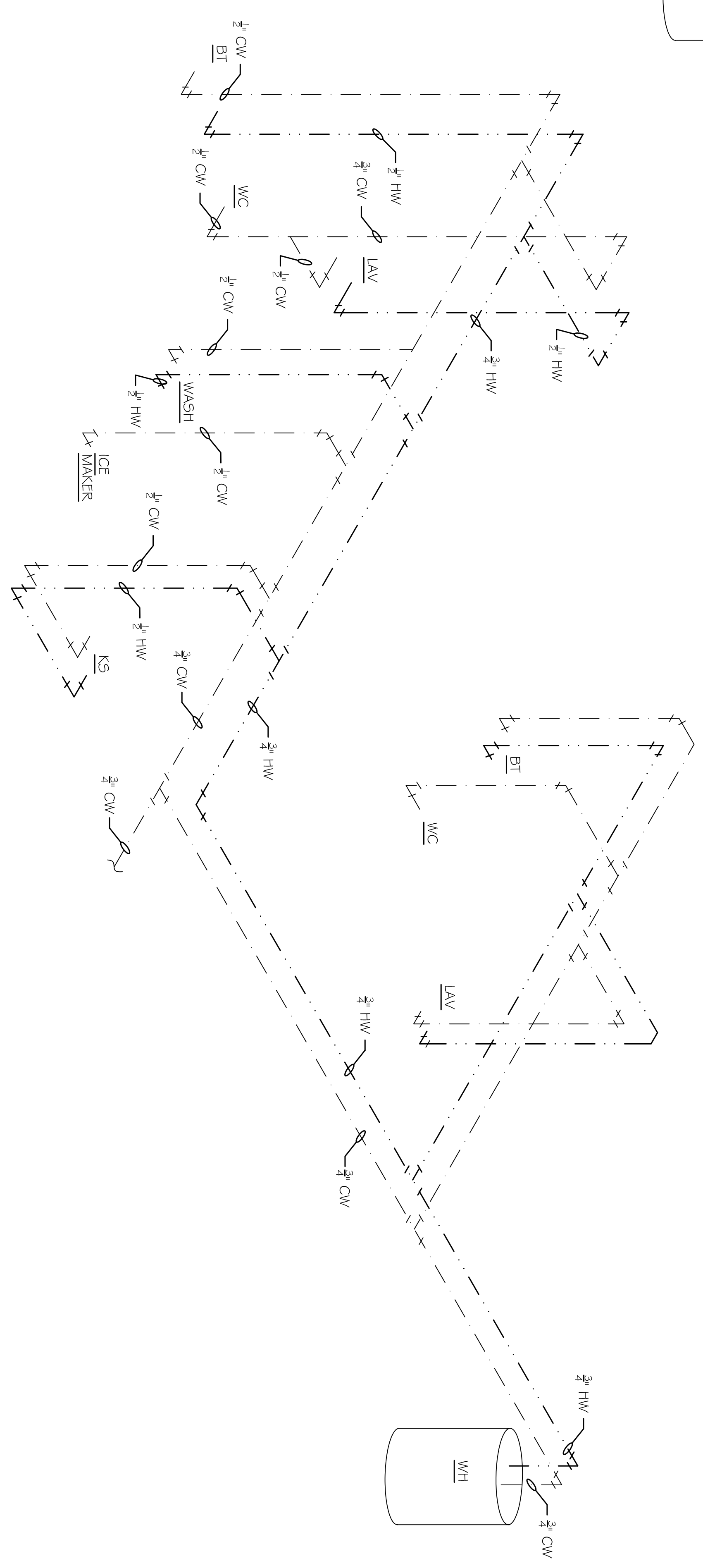
UNIT 1A WATER RISER



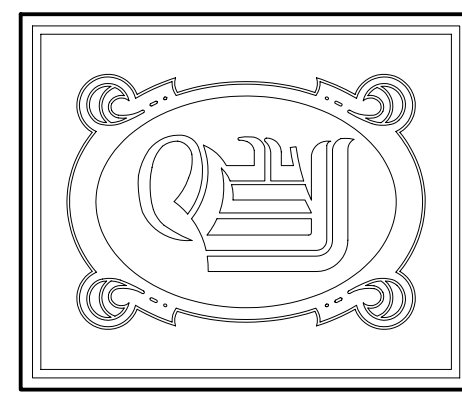
UNIT 1B WATER RISER



UNIT 2A WATER RISER



UNIT 3A WATER RISER



DAMMON
ENGINEERING, INC.

CHIEF ENGINEER
EMMETT
DAMMON, P.E.
CHIEF ARCHITECT
ROBERT
WILTSE

1095 FLORIDA AVENUE
SUITE L, LA 70458
OFFICE: 985-649-5832
FAX: 985-641-5950

WEBSITE:
WWW.DAMMONENGINEERING.COM
EMAIL:
DAMMONENG@BELLFLOWER.NET

ARCHITECTURE
ENGINEERING
STUDIES
PLANNING
INVESTIGATION
EXPERT WITNESS

NEW
APARTMENT
COMPLEX

CROSSWINDS
APARTMENTS
HAMMOND, LA

UNITS 1A,
1B, 2A & 3A
PLUMBING RISERS

REV:	
SCALE:	AS NOTED
JOB#:	08112.13
DATE:	12-16-09
SHEET	
OF	P-3