

DAMMON
ENGINEERING, INC.

CHIEF ENGINEER
EMMETT
DAMMON, P.E.
CHIEF ARCHITECT
ROBERT
WILTSE

1095 FLORIDA AVENUE
SUITE L, LA 70458
OFFICE: 985-649-5832
FAX: 985-641-5950

WEBSITE:
WWW.DAMMONENGINEERING.COM
EMAIL:
DAMMONENG@BELLOUTH.NET

ARCHITECTURE
ENGINEERING
STUDIES
PLANNING
INVESTIGATION
EXPERT WITNESS

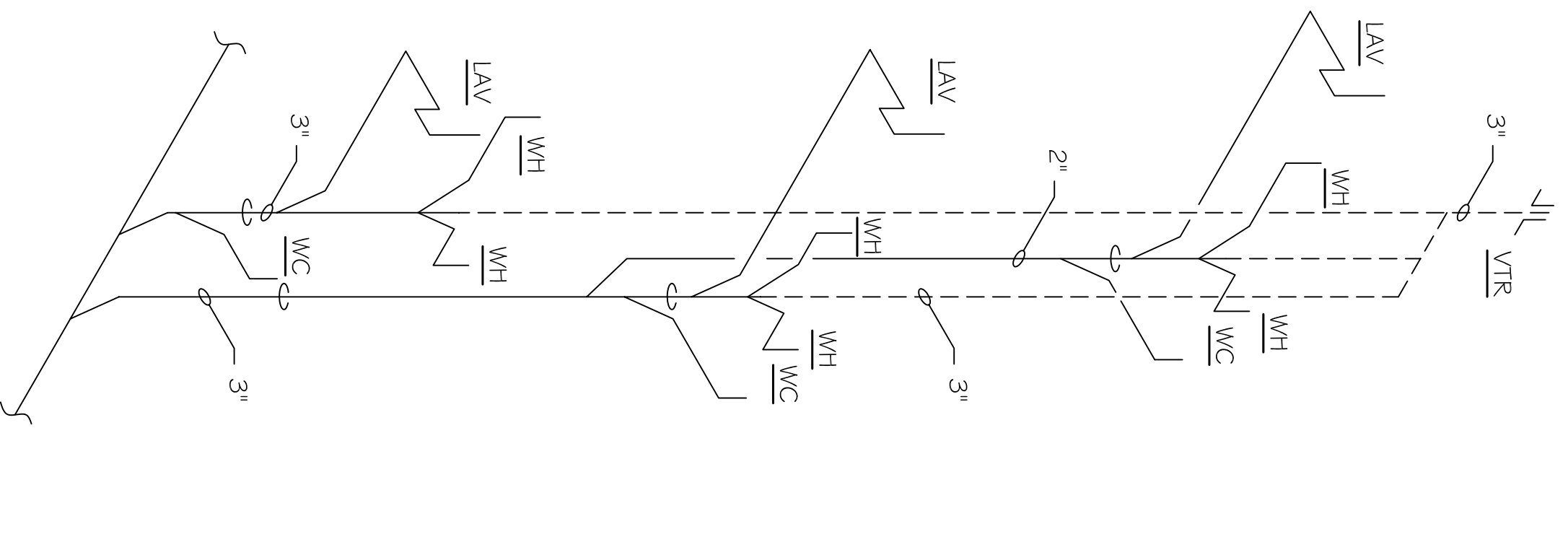
NEW/
APARTMENT
COMPLEX

CROSSWINDS
APARTMENTS
HAMMOND, LA

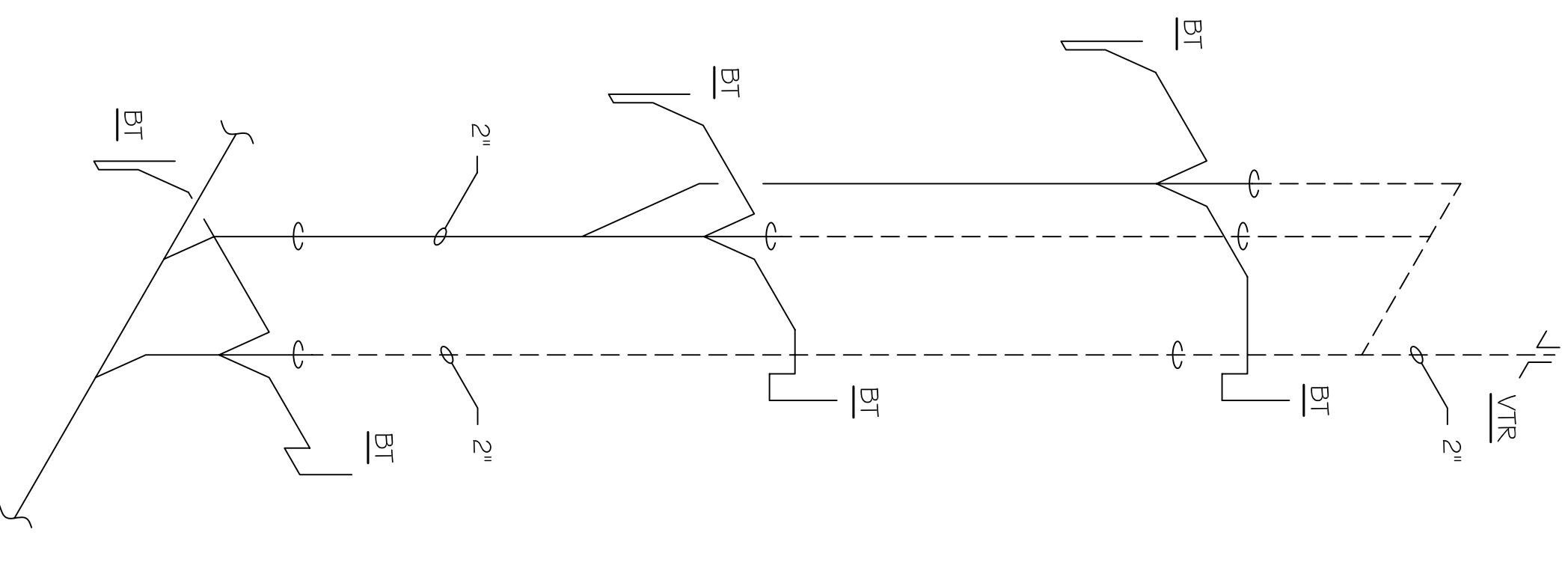
PLUMBING
RISERS

OF

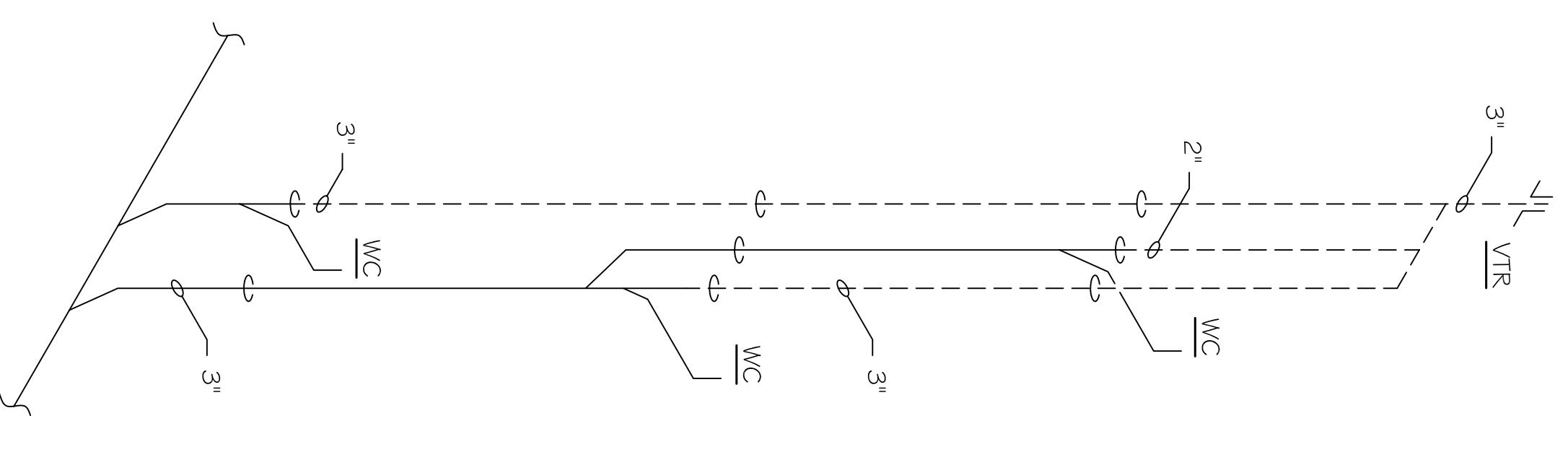
P-5



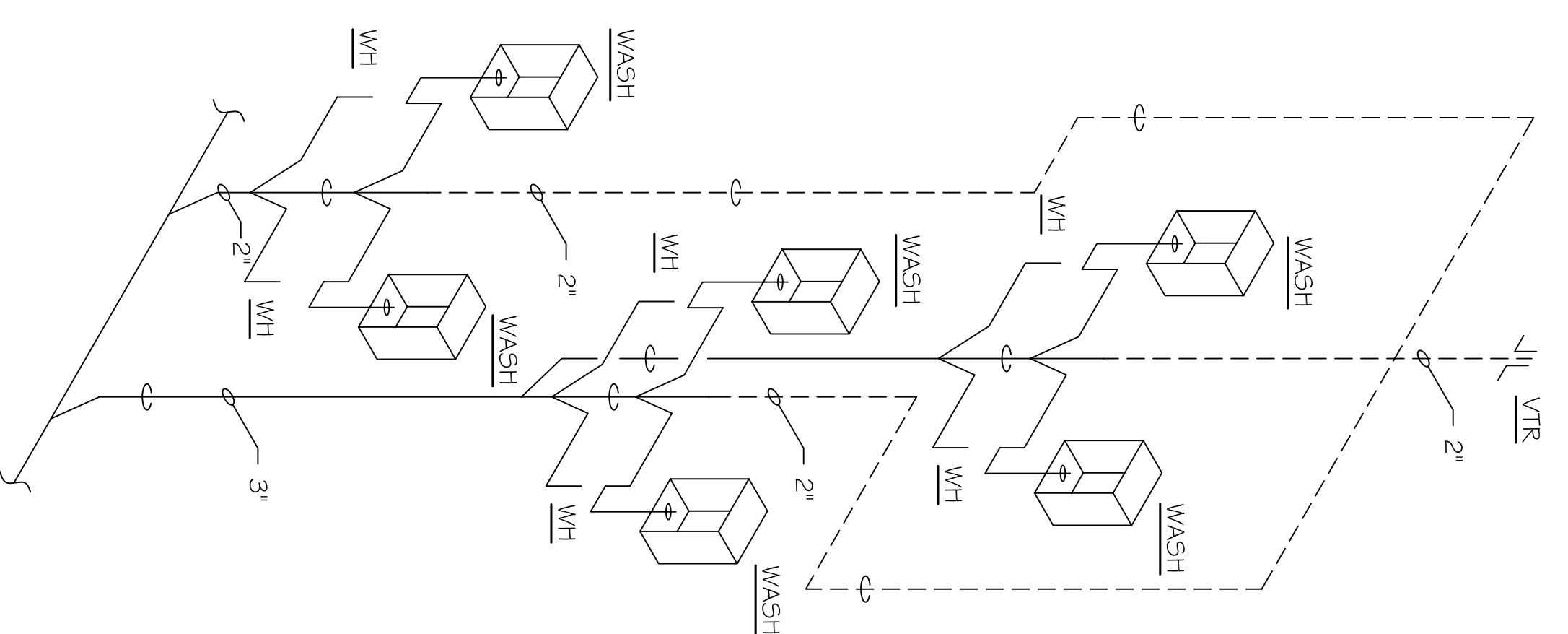
SEWER / VENT RISER "A"



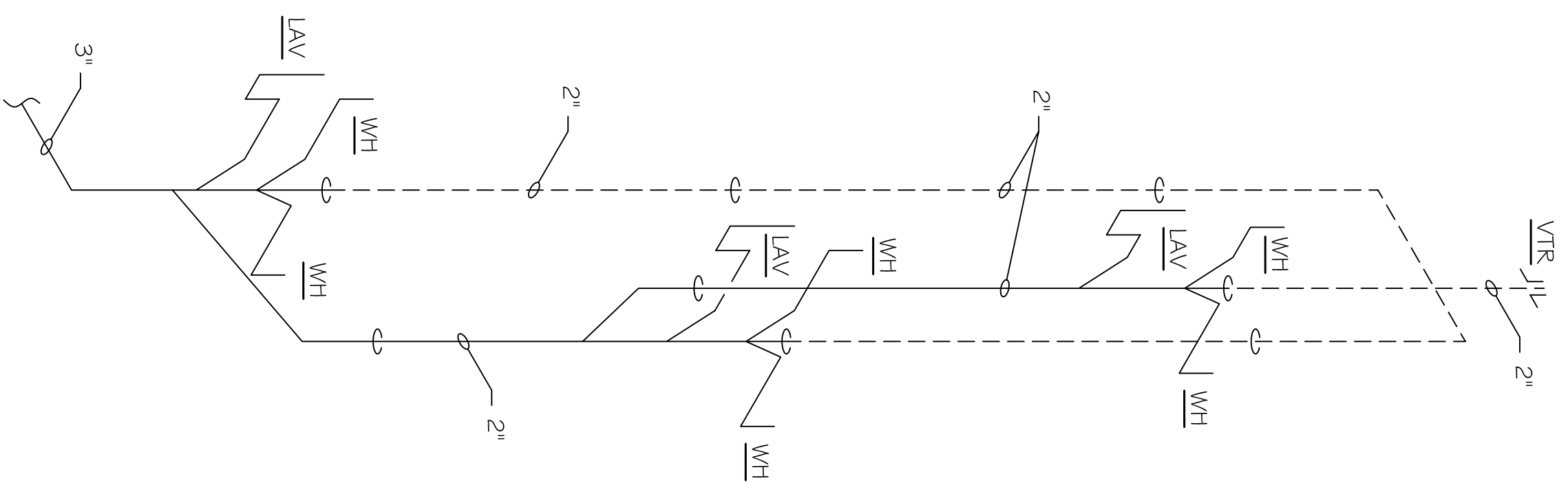
SEWER / VENT RISER "B"



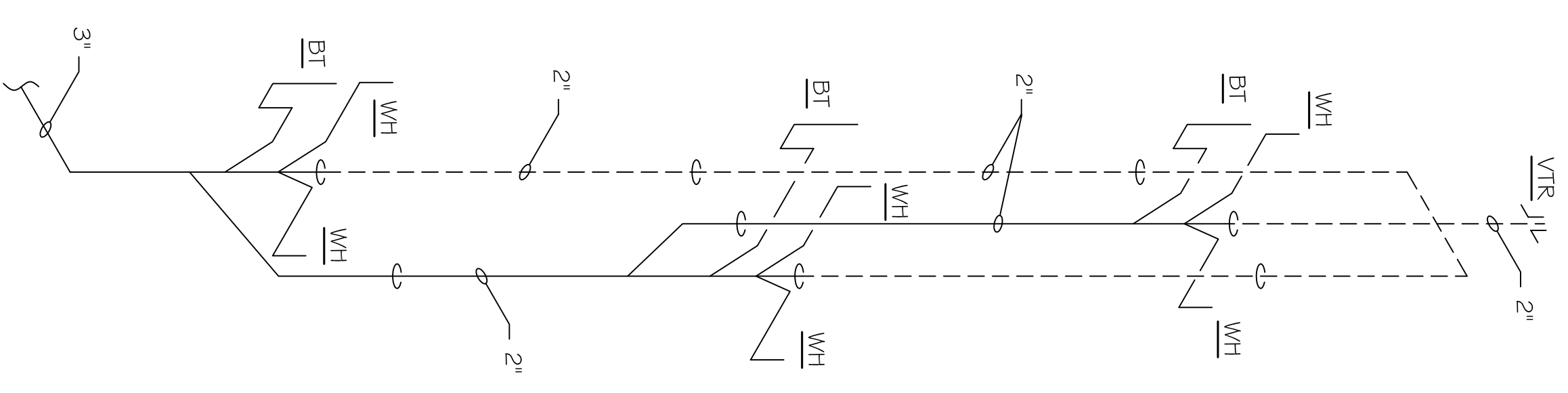
SEWER / VENT RISER "C"



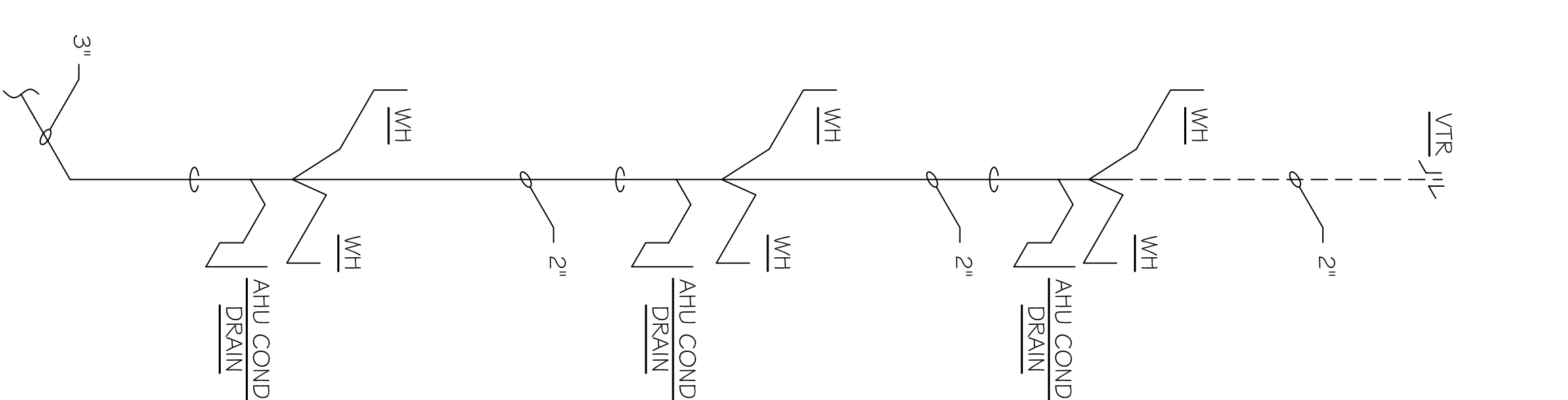
SEWER / VENT RISER "D"



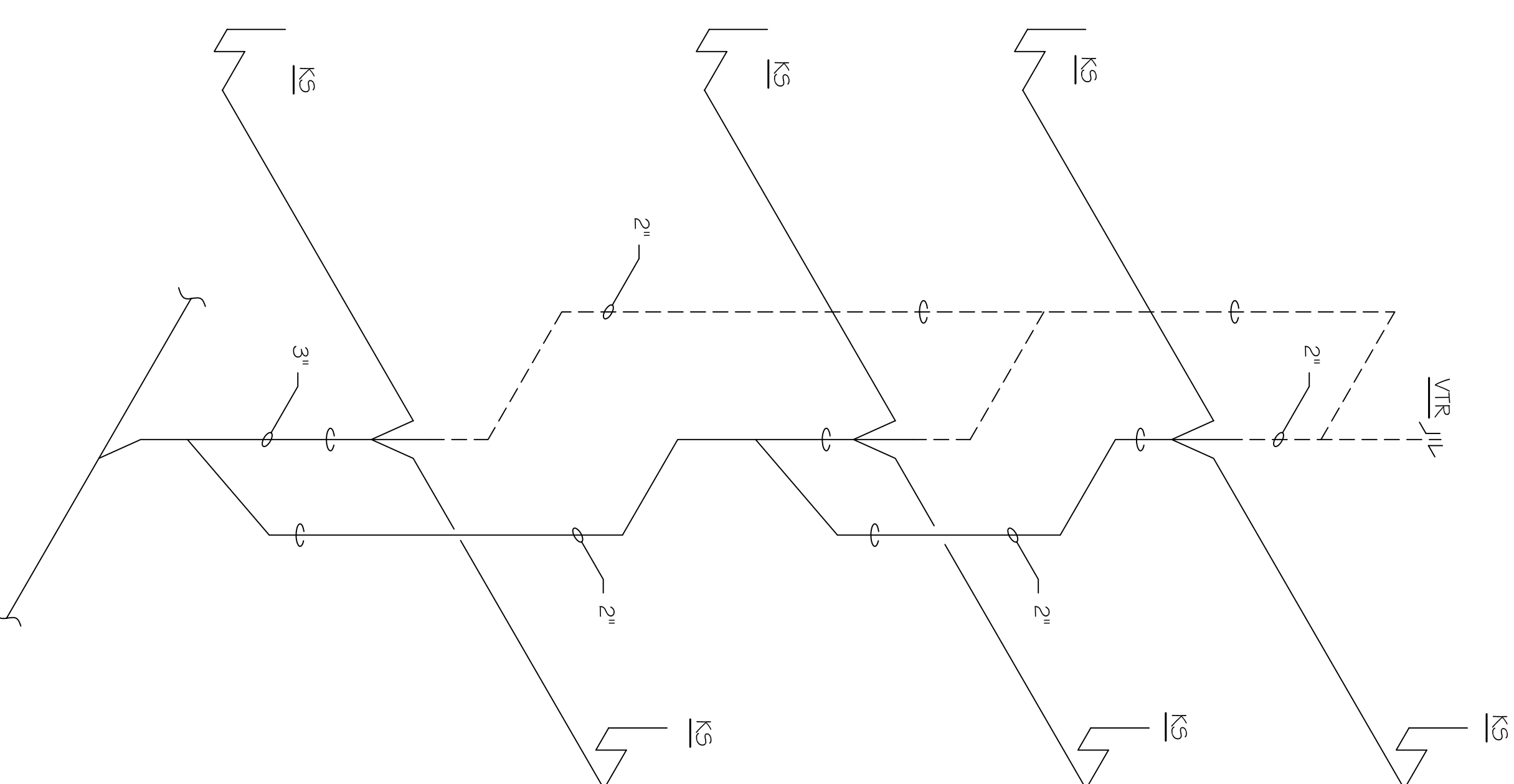
SEWER / VENT RISER "E"



SEWER / VENT RISER "F"



SEWER / VENT RISER "G"



SEWER / VENT RISER "H"

LEGEND

KS	KITCHEN SINK
BT	BATH TUB
AHU	AIR HANDLING UNIT DRAIN
WASH	WATER CLOSET
WC	WATER CLOSET
LAV	LAVATORY

REV:

SCALE: AS NOTED

JOB#: 08112.13

DATE: 12-16-09

SHEET