

**DAMMON**  
ENGINEERING, INC.

CHIEF ENGINEER  
EMMETT  
DAMMON, P.E.  
CHIEF ARCHITECT  
ROBERT  
WILTSE

1095 FLORIDA AVENUE  
SLIDELL, LA. 70458  
OFFICE: 985-649-5832  
FAX: 985-641-5950

WEBSITE:  
WWW.DAMMONENGINEERING.COM  
EMAIL:  
DAMMONENG@BELLSOUTH.NET

ARCHITECTURE  
ENGINEERING  
STUDIES  
PLANNING  
INVESTIGATION  
EXPERT WITNESS

NEW  
APARTMENT  
COMPLEX

CROSSWINDS  
APARTMENTS  
HAMMOND, LA

UNITS 2A-HC,  
3A & 3A-HC  
ELECTRICAL  
PLAN

REV:

SCALE: AS NOTED

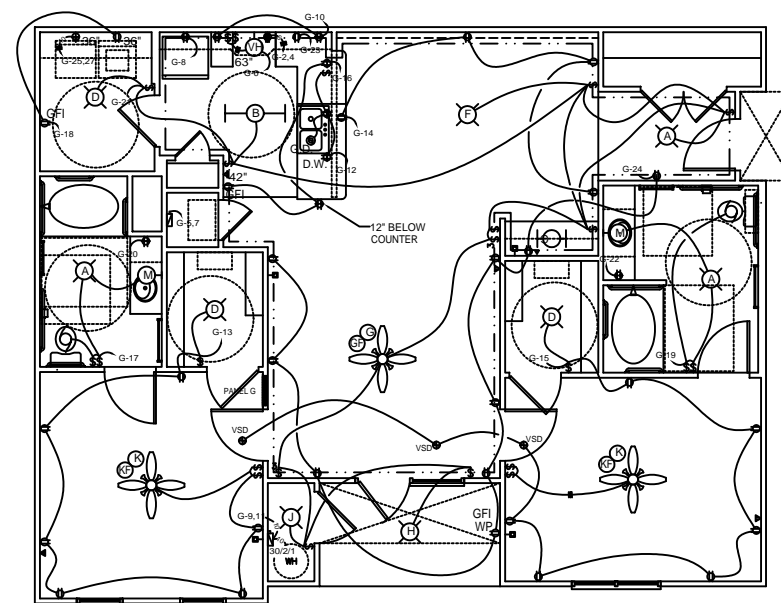
JOB#: 08112.13

DATE: 12-16-09

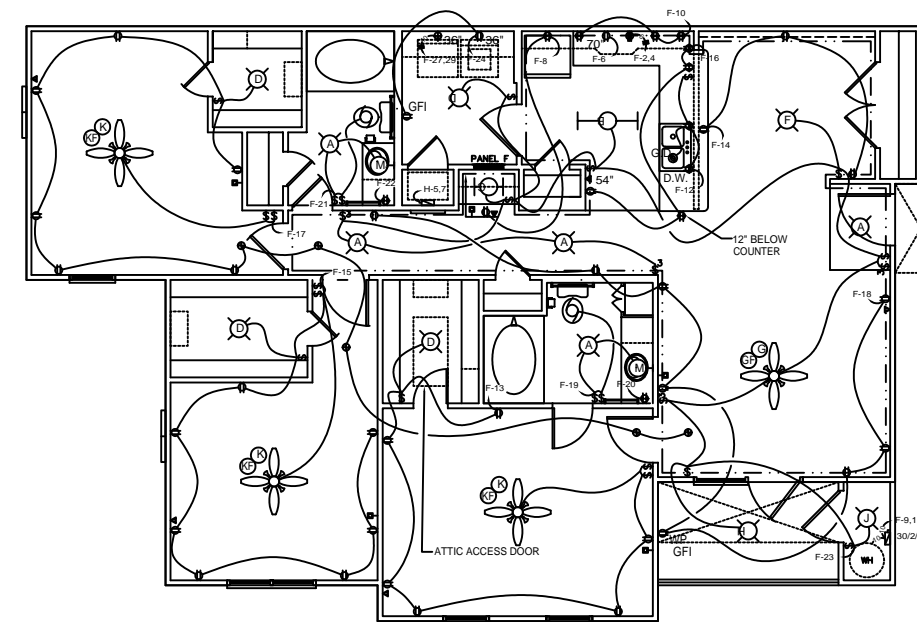
SHEET

**E-6**

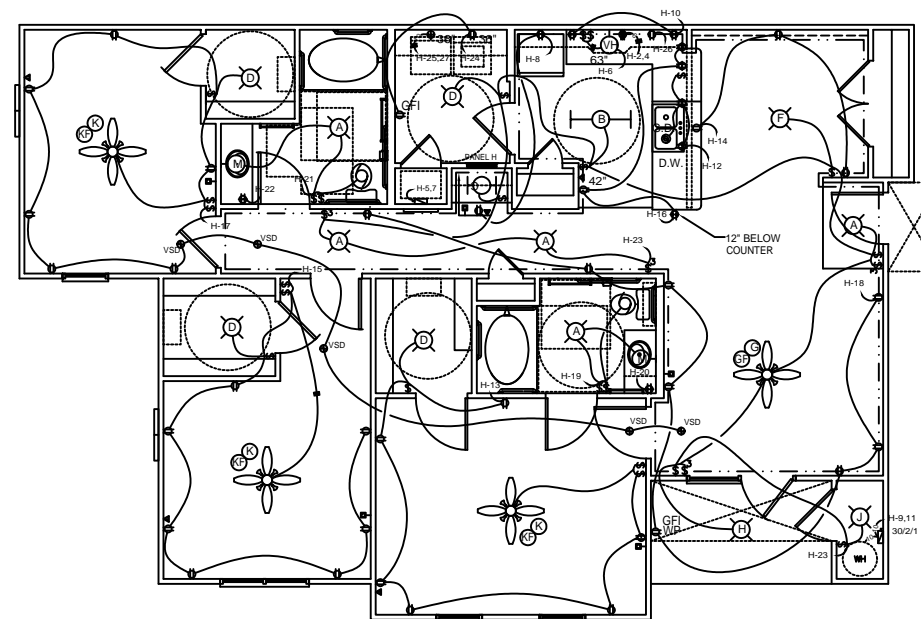
OF



UNIT 2A-HC ELECTRICAL PLAN  
SCALE: 1/4" = 1'-0"



UNIT 3A ELECTRICAL PLAN  
SCALE: 1/4" = 1'-0"



UNIT 3A-HC ELECTRICAL PLAN  
SCALE: 1/4" = 1'-0"