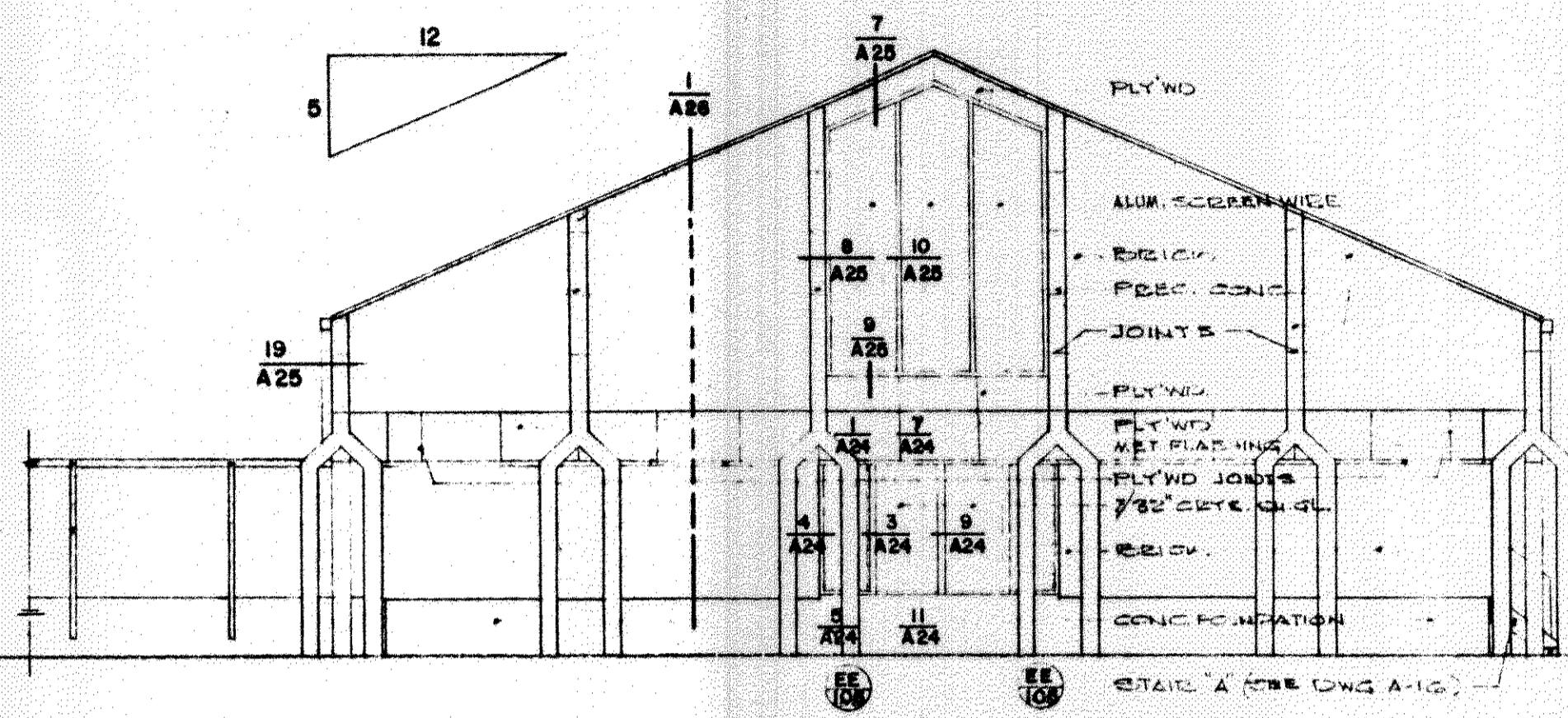


west elevation

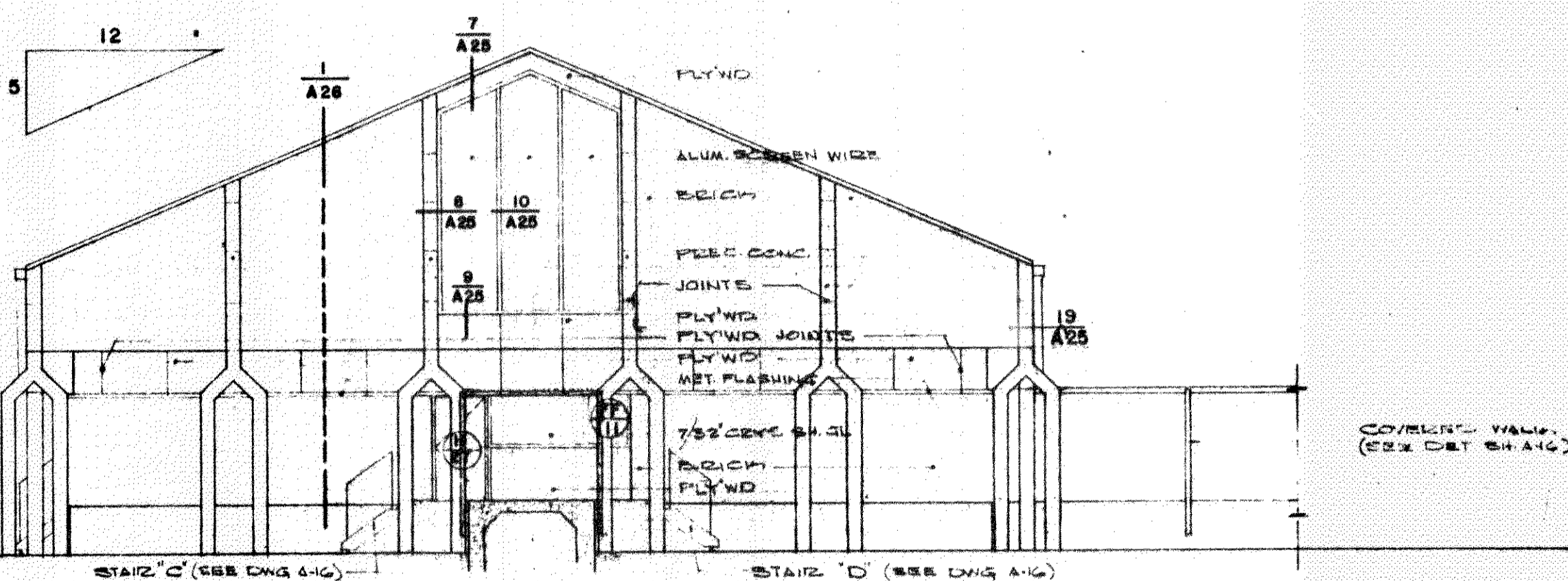
1/8" = 1'-0"



north elevation

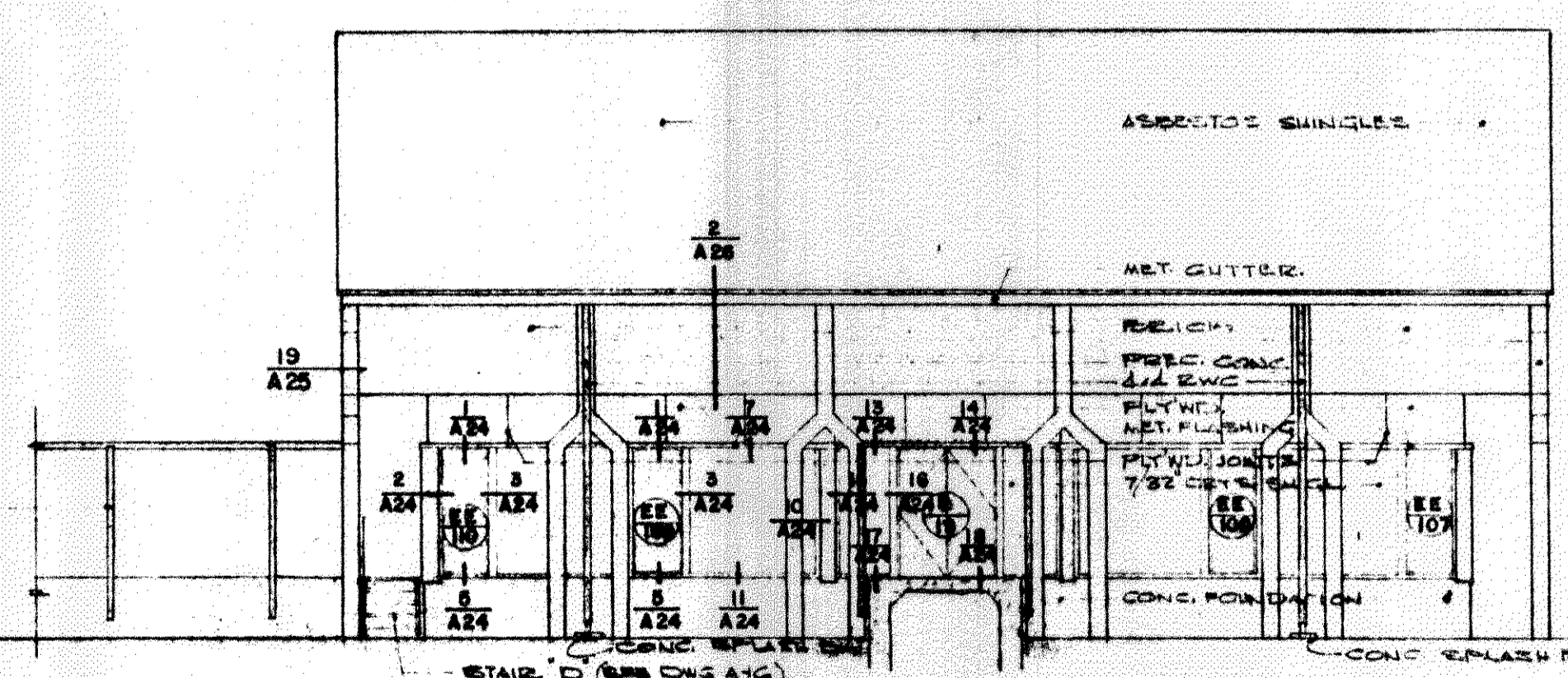
1/8" = 1'-0"

top of brick	elev.	14'-3"
fin. floor slab	elev.	11'-5 1/2"
top of conc. cols.	elev.	9'-7"
top of brick walls	elev.	7'-0"
fin. floor	elev.	0'-0"
fin. grade	elev.	varies



south elevation

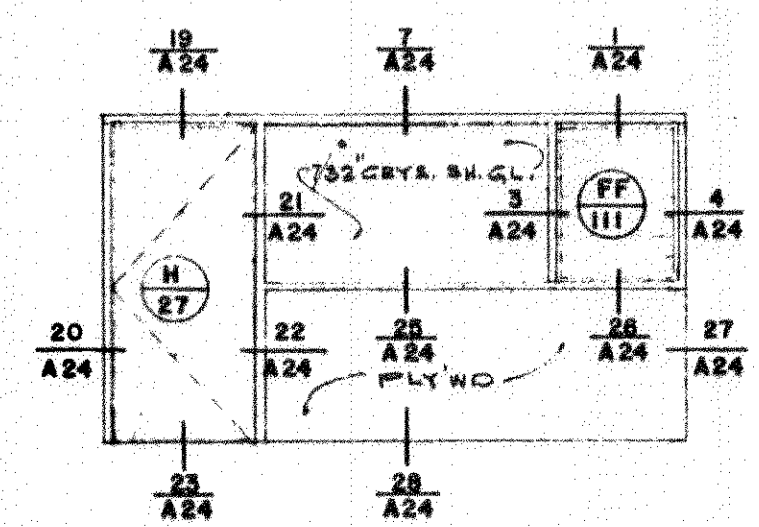
1/8" = 1'-0"



east elevation

1/8" = 1'-0"

top of brick	elev.	14'-3"
fin. floor slab	elev.	11'-5 1/2"
top of conc. cols.	elev.	9'-7"
top of brick walls	elev.	7'-0"
fin. floor	elev.	0'-0"
fin. grade	elev.	varies



our lady of lourdes catholic church and rectory

slidell, louisiana

lawrence and associates architects, louisiana

date 1-12-61
 scale 1/8" = 1'-0"
 drawn JML
 checked JML
 revised

sheet no. **A-19**
 15 OF 25