

**DAMMON**  
ENGINEERING, INC.

CHIEF ENGINEER  
EMMETT  
DAMMON, P.E.

CHIEF ARCHITECT  
ROBERT  
WILTSE

1095 FLORIDA AVENUE  
SLIDELL, LA, 70456  
OFFICE: 985-649-5352  
FAX: 985-641-5950

WEBSITE:  
WWW.DAMMONENGINEERING.COM  
EMAIL:  
DAMMONENG@SLIDELA.NET

ARCHITECTURE  
ENGINEERING  
STUDIES  
PLANNING  
INVESTIGATION  
EXPERT WITNESS

ALDERSGATE  
UNITED METHODIST  
ALTERATIONS  
AND RENOVATIONS

DALE KIMBALL  
2515 CAREY STREET  
SLIDELL, LA

MECHANICAL  
PLAN

REV: 6-1-09

SCALE: AS NOTED

JOB#: 1795

DATE: 6-17-08

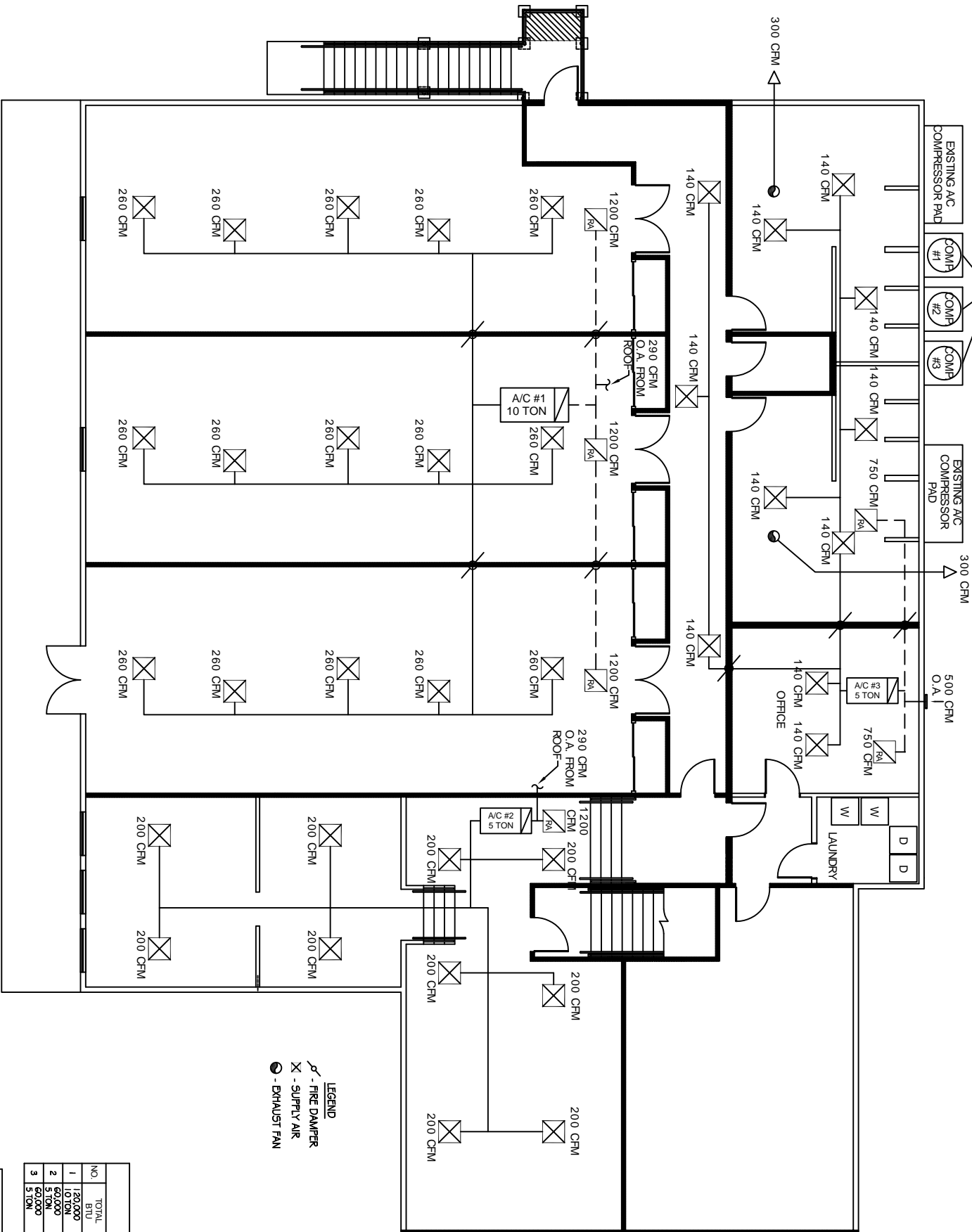
SHEET 6

M-1

OF 8

**HVAC NOTES**

1. CONCEALED DUCTWORK TO BE UL-181, CLASS 1, FIBERGLASS DUCTBOARD. DUCTS SHALL BE SIZED TO LIMIT MAIN DUCTS TO 1000 CFM & SECONDARY DUCTS TO 800 CFM. TO BE INSTALLED PER SMACNA STANDARDS.
2. EXPOSED DUCTWORK TO BE GALVANIZED SHEET METAL PER SMACNA STANDARDS. LINE WITH NEOPRENE COATED 1.0" x 1.5" POUNDS PER CUBIC FOOT DUCT INSULATION.
3. ROUND FLEXIBLE DUCT TO BE UL-181, CLASS 1, AIR DUCT MATERIALS.
4. DUCT SIZES SHOWN ARE CLEAR INSIDE DIMENSIONS.
5. IN ALL SYSTEMS OVER 2000 CFM AND LESS THAN 15,000 CFM, SMOKE DETECTORS SHALL BE INSTALLED IN ACCORDANCE WITH NFPA 72 IN THE RETURN DUCT DOWNSTREAM OF THE AIR HANDLING UNIT AND ALL FILTERS TO AUTOMATICALLY STOP THE FAN.
6. PROVIDE UL, LISTED 125, F PRESTAIN IN RETURN AIR OR EACH SYSTEM UNDER 2000 CFM TO SHUT DOWN THE FAN IN THE EVENT OF FIRE.
7. PROVIDE UL, RATED FIRE DAMPERS WHERE REQUIRED AT ALL DUCT PENETRATIONS OF FIRE-RATED ASSEMBLIES AND WHERE REQUIRED BY CODE, INCLUDING OUTSIDE AIR INTAKES.
8. CONDENSATE DRAINS TO BE PVC PIPE RUN TO RUMBER'S P-TRAP WITHIN FIVE FEET OF AIR HANDLING UNITS.
9. ALL AIR HANDLING SYSTEMS TO BE BALANCED TO ASSURE PROPER AIR FLOWS PER PLANS.
10. ALL THERMOSTATS TO BE AUTOMATIC CHANGEOVER WITH HEAT SWITCH.
11. EXHAUST FAN EQUAL TO BROAN MODEL NO. 100 CF OR EQUAL. FAN SHALL BE CONTROLLED BY A SWITCH ON THE WALL IN THE SAME LOCATION AS LIGHT SWITCHES. PROVIDE BACK DRAFT DAMPER.
12. PROVIDE AND INSTALL WATER PROOF GRILLE VENT IN PROPER ROOF LOCATION FOR PLUMBING FIXTURE EXHAUST.
13. ALL SUPPLY AIR VENTS SHALL BE EQUIPPED WITH AIR CONTROL DAMPERS.
14. LOCATE OUTDOOR UNITS AS SHOWN ON ARCH. DWGS.
15. REFRIGERANT LINES SHALL BE SIZED BY UNIT MANUFACTURER AND INSTALLED ACCORDING TO MANUFACTURERS' INSTRUCTIONS.
16. FRESH AIR SHALL BE SUPPLIED TO EACH AIR HANDLER THROUGH EXTERIOR WALL DUCT SUPPLIED WITH A CONTROL DAMPER.
17. INSTALL FIRE DAMPER WHERE S.A. & R.A. DUCTS PENETRATE 1 HOUR RATED CEILING.
18. ALL ELECTRICAL, MECHANICAL, AND PLUMBING PENETRATING FIRE WALLS SHALL BE FIRE CALKED. (PENETRATIONS THROUGH RATED CONSTRUCTION SHALL BE SEALED WITH A MATERIAL CAPABLE OF PREVENTING THE PASSAGE OF FLAMES AND HOT GASES WHEN TESTED IN ACCORDANCE WITH ASTM-B8-14)



**LEGEND**  
 - FIRE DAMPER  
 - SUPPLY AIR  
 - EXHAUST FAN

AC UNIT SCHEDULE						
NO.	TOTAL BTU	CFM	O.A.	HEAT REC. VOLTAGE	ELECTRICAL MCA (DKT BRKR)	COMMENTS
1	120,000	4,000	290	15 RW	240V, 3Ø	R-1 (1.5)
2	60,000	2,000	360	15 RW	240V, 3Ø	F-2 (1.5)
3	60,000	2,000	500	15 RW	240V, 3Ø	F-3 (1.5)

YORK  
SERVRY WITH OWNER

**FRESH AIR REQUIREMENTS PER IMC 2006, TABLE 403.3**

ROOM NAME	SQUARE FEET	OCCUPANTS	CFM O.A. / OCC.	TOTAL REQ. O.A. (CFM)
DORMITORY	~2900	58	5	290
KITCHEN	210	-	0.7cfm/sf	147
LOUNGE AREA	730	-	21.9	164.5
TV ROOM	250	-	7.5	56.5
TOILET ROOMS	700	-	*	500

\* 50 cfm O.A. / 700 SF NET FLOOR AREA

**2nd FLOOR MECHANICAL PLAN**

SCALE 3/16" = 1'-0"

