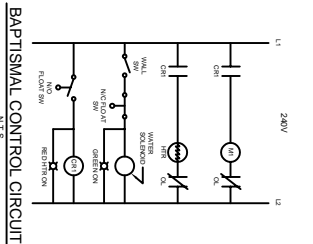
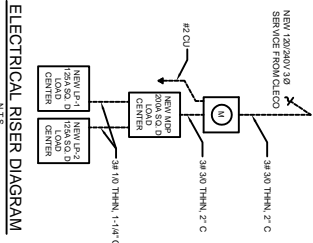


2ND FLOOR ELECTRICAL PLAN  
SCALE 1/4"=1'-0"

- LEGEND**
- - 2x4 RECESSED FLUORESCENT LAMP STEEL HOUSING
  - ⬆ - EMERGENCY / EXIT LIGHT WITH 90 MIN. BATTERY BACKUP
  - ⬆ - EMERGENCY LIGHT WITH 90 MIN. BATTERY BACKUP
  - ◇ - MOUNTED LIGHT
  - ◇ - LIGHT (VERIFY STYLE)
  - ⊖ - 120V, 20A DUPLEX RECEPTACLE (WEATHER PROOF)
  - ⊖ - 120V, 20A DUPLEX RECEPTACLE (WEATHER PROOF)
  - ⊖ - GFI RECEPTACLE
  - ⊖ - JUNCTION BOX
  - ⊖ - DISCONNECT
  - ⊖ - POWER PANEL
  - ⊖ - WATER HEATER W/ DISCONNECT
  - ⊖ - EXHAUST FAN
  - ⊖ - SWITCH
  - ⊖ - 3-WAY SWITCH
  - ⊖ - RECESSED CAN LIGHT
  - ⊖ - CHANDLIER (VERIFY STYLE)



| NO. | DESCRIPTION  | QTY | UNIT | PRICE | TOTAL |
|-----|--|-----|------|-------|-------|
| 1   | 2x4 RECESSED FLUORESCENT LAMP STEEL HOUSING        | 12  | EA   | 1.50  | 18.00 |
| 2   | EMERGENCY / EXIT LIGHT WITH 90 MIN. BATTERY BACKUP | 2   | EA   | 12.00 | 24.00 |
| 3   | EMERGENCY LIGHT WITH 90 MIN. BATTERY BACKUP        | 2   | EA   | 12.00 | 24.00 |
| 4   | MOUNTED LIGHT                                      | 1   | EA   | 15.00 | 15.00 |
| 5   | LIGHT (VERIFY STYLE)                               | 1   | EA   | 15.00 | 15.00 |
| 6   | 120V, 20A DUPLEX RECEPTACLE (WEATHER PROOF)        | 12  | EA   | 1.50  | 18.00 |
| 7   | 120V, 20A DUPLEX RECEPTACLE (WEATHER PROOF)        | 12  | EA   | 1.50  | 18.00 |
| 8   | GFI RECEPTACLE                                     | 1   | EA   | 15.00 | 15.00 |
| 9   | JUNCTION BOX                                       | 1   | EA   | 15.00 | 15.00 |
| 10  | DISCONNECT   | 1   | EA   | 15.00 | 15.00 |
| 11  | POWER PANEL  | 1   | EA   | 15.00 | 15.00 |
| 12  | WATER HEATER W/ DISCONNECT                         | 1   | EA   | 15.00 | 15.00 |
| 13  | EXHAUST FAN  | 1   | EA   | 15.00 | 15.00 |
| 14  | SWITCH   | 1   | EA   | 15.00 | 15.00 |
| 15  | 3-WAY SWITCH                                       | 1   | EA   | 15.00 | 15.00 |
| 16  | RECESSED CAN LIGHT                                 | 1   | EA   | 15.00 | 15.00 |
| 17  | CHANDLIER (VERIFY STYLE)                           | 1   | EA   | 15.00 | 15.00 |

| NO. | DESCRIPTION  | QTY | UNIT | PRICE | TOTAL |
|-----|--|-----|------|-------|-------|
| 1   | 2x4 RECESSED FLUORESCENT LAMP STEEL HOUSING        | 12  | EA   | 1.50  | 18.00 |
| 2   | EMERGENCY / EXIT LIGHT WITH 90 MIN. BATTERY BACKUP | 2   | EA   | 12.00 | 24.00 |
| 3   | EMERGENCY LIGHT WITH 90 MIN. BATTERY BACKUP        | 2   | EA   | 12.00 | 24.00 |
| 4   | MOUNTED LIGHT                                      | 1   | EA   | 15.00 | 15.00 |
| 5   | LIGHT (VERIFY STYLE)                               | 1   | EA   | 15.00 | 15.00 |
| 6   | 120V, 20A DUPLEX RECEPTACLE (WEATHER PROOF)        | 12  | EA   | 1.50  | 18.00 |
| 7   | 120V, 20A DUPLEX RECEPTACLE (WEATHER PROOF)        | 12  | EA   | 1.50  | 18.00 |
| 8   | GFI RECEPTACLE                                     | 1   | EA   | 15.00 | 15.00 |
| 9   | JUNCTION BOX                                       | 1   | EA   | 15.00 | 15.00 |
| 10  | DISCONNECT   | 1   | EA   | 15.00 | 15.00 |
| 11  | POWER PANEL  | 1   | EA   | 15.00 | 15.00 |
| 12  | WATER HEATER W/ DISCONNECT                         | 1   | EA   | 15.00 | 15.00 |
| 13  | EXHAUST FAN  | 1   | EA   | 15.00 | 15.00 |
| 14  | SWITCH   | 1   | EA   | 15.00 | 15.00 |
| 15  | 3-WAY SWITCH                                       | 1   | EA   | 15.00 | 15.00 |
| 16  | RECESSED CAN LIGHT                                 | 1   | EA   | 15.00 | 15.00 |
| 17  | CHANDLIER (VERIFY STYLE)                           | 1   | EA   | 15.00 | 15.00 |

| NO. | DESCRIPTION  | QTY | UNIT | PRICE | TOTAL |
|-----|--|-----|------|-------|-------|
| 1   | 2x4 RECESSED FLUORESCENT LAMP STEEL HOUSING        | 12  | EA   | 1.50  | 18.00 |
| 2   | EMERGENCY / EXIT LIGHT WITH 90 MIN. BATTERY BACKUP | 2   | EA   | 12.00 | 24.00 |
| 3   | EMERGENCY LIGHT WITH 90 MIN. BATTERY BACKUP        | 2   | EA   | 12.00 | 24.00 |
| 4   | MOUNTED LIGHT                                      | 1   | EA   | 15.00 | 15.00 |
| 5   | LIGHT (VERIFY STYLE)                               | 1   | EA   | 15.00 | 15.00 |
| 6   | 120V, 20A DUPLEX RECEPTACLE (WEATHER PROOF)        | 12  | EA   | 1.50  | 18.00 |
| 7   | 120V, 20A DUPLEX RECEPTACLE (WEATHER PROOF)        | 12  | EA   | 1.50  | 18.00 |
| 8   | GFI RECEPTACLE                                     | 1   | EA   | 15.00 | 15.00 |
| 9   | JUNCTION BOX                                       | 1   | EA   | 15.00 | 15.00 |
| 10  | DISCONNECT   | 1   | EA   | 15.00 | 15.00 |
| 11  | POWER PANEL  | 1   | EA   | 15.00 | 15.00 |
| 12  | WATER HEATER W/ DISCONNECT                         | 1   | EA   | 15.00 | 15.00 |
| 13  | EXHAUST FAN  | 1   | EA   | 15.00 | 15.00 |
| 14  | SWITCH   | 1   | EA   | 15.00 | 15.00 |
| 15  | 3-WAY SWITCH                                       | 1   | EA   | 15.00 | 15.00 |
| 16  | RECESSED CAN LIGHT                                 | 1   | EA   | 15.00 | 15.00 |
| 17  | CHANDLIER (VERIFY STYLE)                           | 1   | EA   | 15.00 | 15.00 |

2nd FLOOR ELECTRICAL PLAN  
EUGENE WELLINGTON  
ALLEN ROAD  
SLIDELL, LA 70458

EL-BETHEL PENTECOSTAL CHURCH  
**DAMMON ENGINEERING, INC.**  
1095 FLORIDA AVENUE 985-649-5552 SLIDELL, LA. 70455  
DAMMONENGINEERING.COM

SCALE: AS NOTE  
FILE:  
JOB NO. 1819  
DATE: XX-XX-04  
SHEET  
**E-2**  
OF