

DAMMON
ENGINEERING, INC.

CHIEF ENGINEER
EMMETT
DAMMON, P.E.
CHIEF ARCHITECT
ROBERT
WILTSE

1095 FLORIDA AVENUE
SLIDELL, LA, 70436
OFFICE: 985-649-5332
FAX: 985-641-5950

WEBSITE:
WWW.DAMMONENGINEERING.COM
EMAIL:
DAMMONENG@BELLSOUTH.NET

ARCHITECTURE
ENGINEERING
STUDIES
PLANNING
INVESTIGATION
EXPERT WITNESS

E-BETHEL
PENTECOSTAL
CHURCH

REV. EUGENE
WELLINGTON
ALLEN ROAD
SLIDELL, LA

REFLECTED
CEILING PLAN

REV:

SCALE: AS NOTED

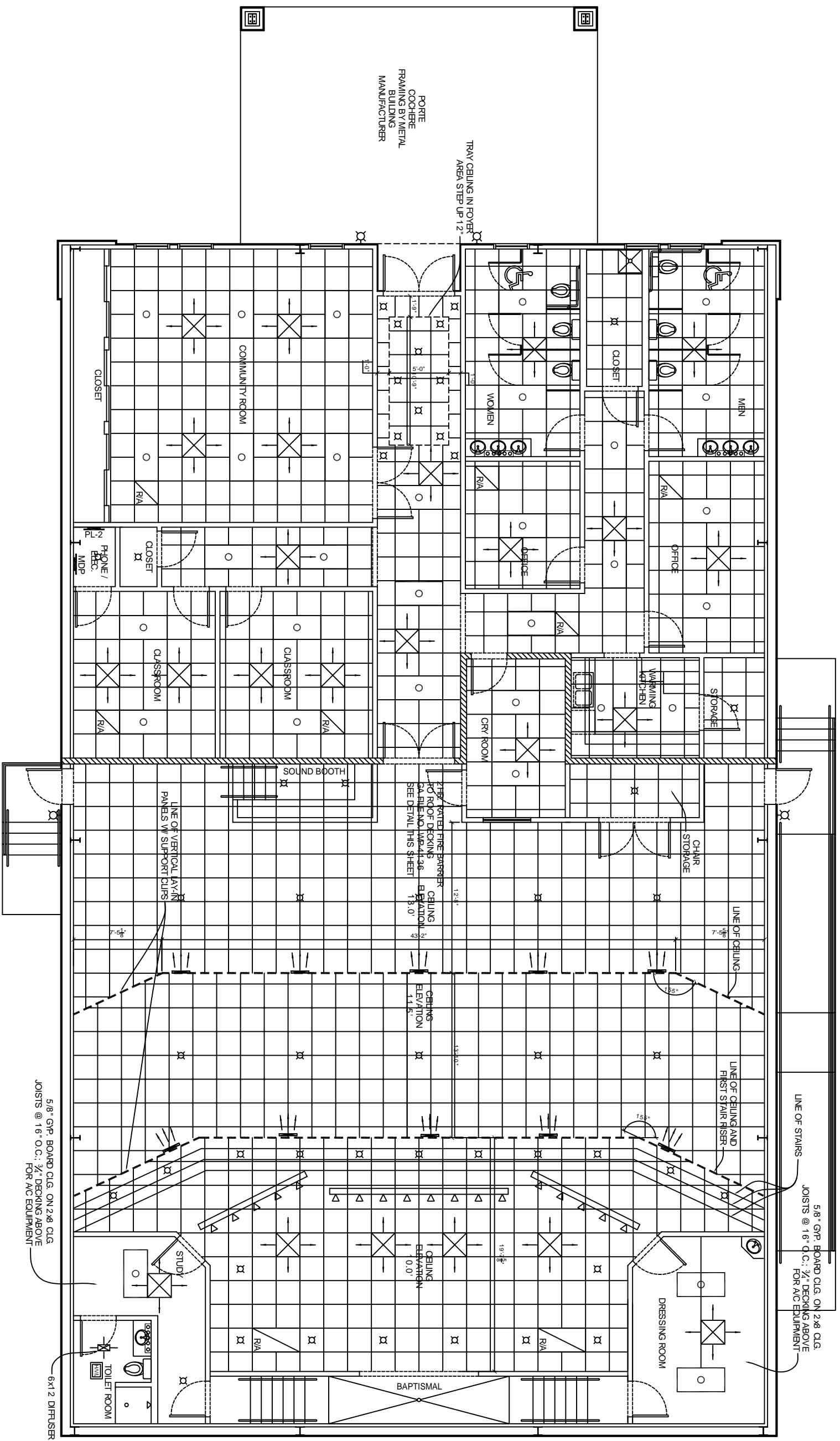
JOB#: 1819A

DATE: 11-19-08

SHEET 13

A-4

OF 20



REFLECTED CEILING PLAN

SCALE: 1/4"=1'-0"



LEGEND

○ - 2' X 4' FLUORESCENT FIXTURE

□□□□ - BROADWAY LIGHT

⊗ - CEILING MOUNTED FIXTURE

⊗ - EXTERIOR WALL SCONCE FIXTURE
W/ 90 MINUTE BACKUP

⊗ - HEATER/VENT/ LIGHT

⊗ - 2'X2' DIFFUSER

5/8" GYP. BOARD CLG. ON 2x8 CLG.
JOISTS @ 16" O.C.; 3/4" DECKING ABOVE
FOR A/C EQUIPMENT

LINE OF VERTICAL JAVAN
PANELS W/ SUPPORT CLIPS

2" RATED FIRE BARRIER
ROOF DOCKING
SEE DETAIL THIS SHEET

CEILING
ELEVATION
11.5'

CEILING
ELEVATION
10.0'

6x12 DIFFUSER

5/8" GYP. BOARD CLG. ON 2x8 CLG.
JOISTS @ 16" O.C.; 3/4" DECKING ABOVE
FOR A/C EQUIPMENT

PORE
COCHERE
BUILDING
FRAMING BY METAL
MANUFACTURER

TRAY CEILING IN FOYER
AREA STEP UP 1/2"