

DAMMON
ENGINEERING, INC.

CHIEF ENGINEER
EMMETT
DAMMON, P.E.

CHIEF ARCHITECT
ROBERT
WILTSE

1095 FLORIDA AVENUE
SLIDELL, LA, 70436
OFFICE: 985-649-5332
FAX: 985-641-5950

WEBSITE:
WWW.DAMMONENGINEERING.COM
EMAIL:
DAMMONENG@BELL.SOUTH.NET

ARCHITECTURE
ENGINEERING
STUDIES
PLANNING
INVESTIGATION
EXPERT WITNESS

**E-BETHEL
PENTECOSTAL
CHURCH**

REV. EUGENE
WELLINGTON
ALLEN ROAD
SLIDELL, LA

**POWER
PLAN**

REV:

SCALE: AS NOTED

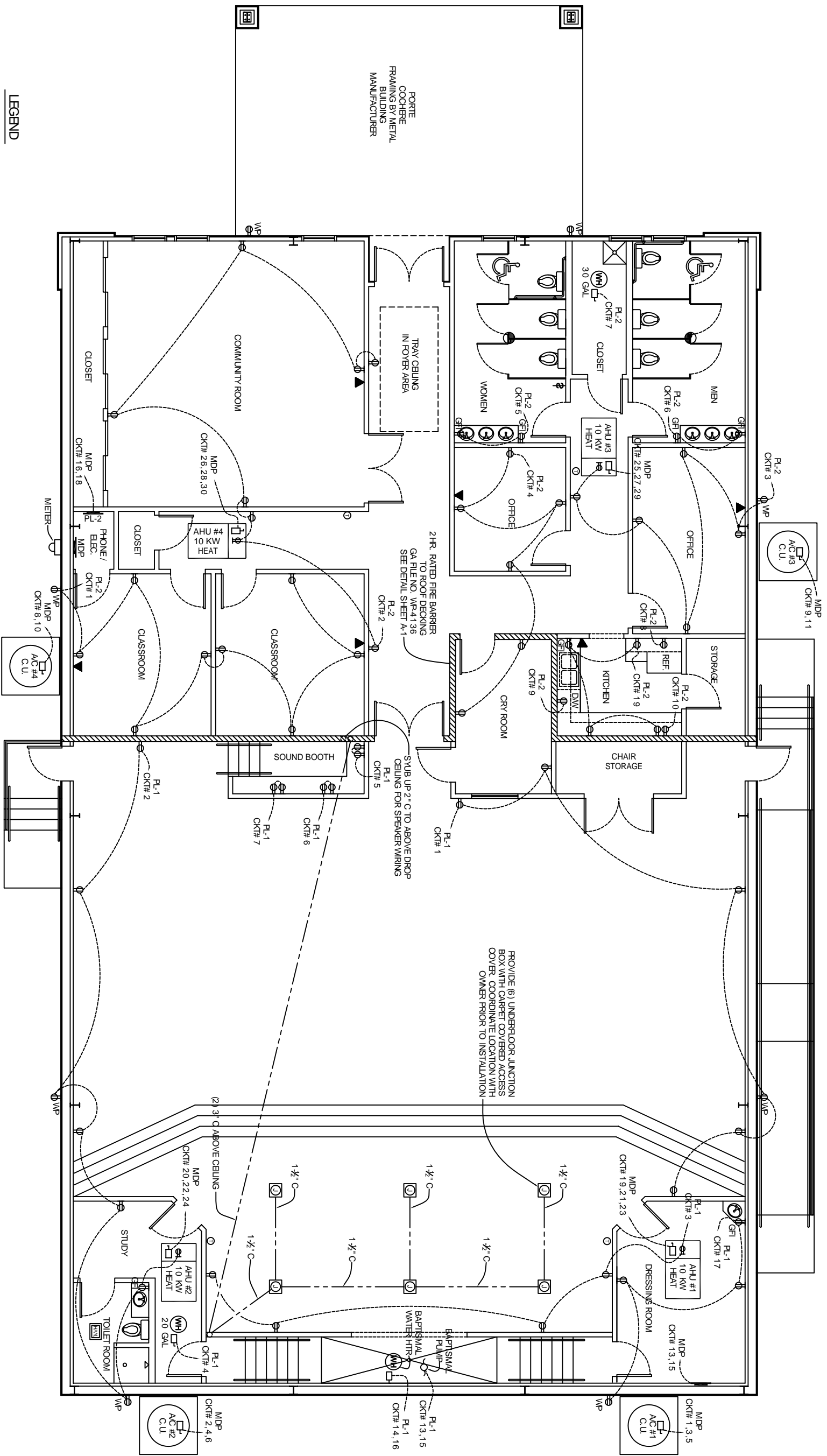
JOB#: 1819A

DATE: 11-19-08

SHEET 15

E-1

OF 20



POWER PLAN
SCALE: 1/4"=1'-0"
SEE SHEET E-3 FOR ELECTRICAL NOTES AND PANEL SCHEDULE

- LEGEND**
- ⊕ - 120V, 20A DUPLEX RECEPTACLE
 - ⊕_{WP} - 120V, 20A DUPLEX RECEPTACLE (WEATHER PROOF)
 - ⊙ - JUNCTION BOX
 - ⊠ - POWER PANEL
 - ⊠_{WP} - WATER HEATER W/ DISCONNECT
 - ⊠_{EF} - EXHAUST FAN
 - ⊠_{SW} - SWITCH
 - ⊠_{PC} - PHONE / INTERNET / CABLE COORDINATE WITH OWNER