

**DAMMON**  
ENGINEERING, INC.

CHIEF ENGINEER  
EMMETT  
DAMMON, P.E.

CHIEF ARCHITECT  
ROBERT  
WILTSE

1095 FLORIDA AVENUE  
SUDELL, LA, 70458  
OFFICE: 985-649-5332  
FAX: 985-641-5950

WEBSITE:  
WWW.DAMMONENGINEERING.COM  
EMAIL:  
DAMMONENG@BELL.SOUTH.NET

ARCHITECTURE  
ENGINEERING  
STUDIES  
PLANNING  
INVESTIGATION  
EXPERT WITNESS

**E-BETHEL  
PENTECOSTAL  
CHURCH**

REV. EUGENE  
WELLINGTON  
ALLEN ROAD  
SUDELL, LA

**LIGHTING  
PLAN**

REV:

SCALE: AS NOTED

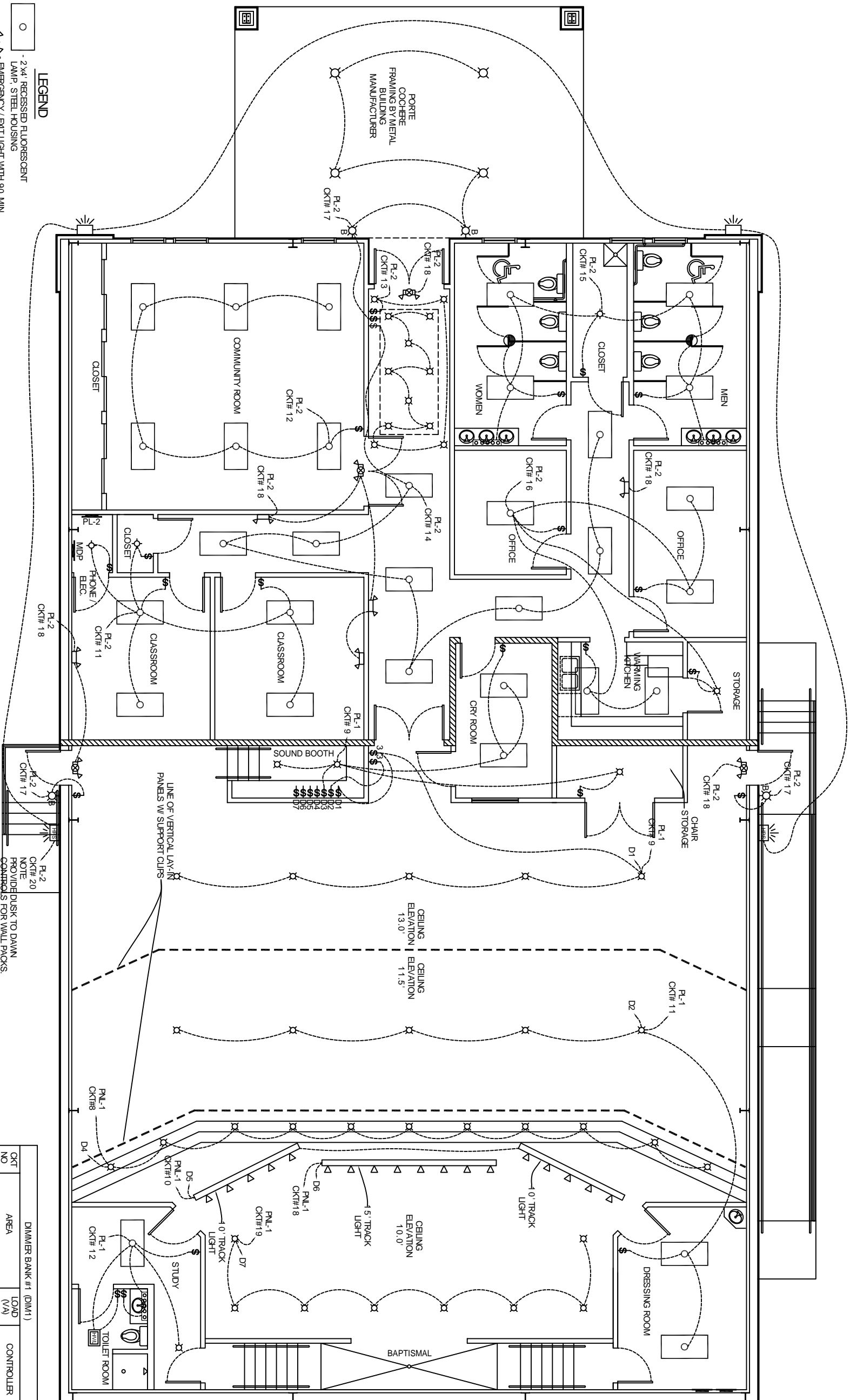
JOB#: 1819A

DATE: 11-19-08

SHEET 16

OF 20

**E-2**



**LEGEND**

- - 2"x4" RECESSED FLUORESCENT LAMP, STEEL HOUSING
- ⬆ - EMERGENCY / EXIT LIGHT WITH 90 MIN. BATTERY BACKUP
- ⬆ - EMERGENCY LIGHT WITH 90 MIN. BATTERY BACKUP
- ⬆ - WALL MOUNTED LIGHT
- ⬆ - CEILING MOUNTED LIGHT
- ⬆ - RECESSED CAN LIGHT
- B⬆ - WALL MOUNTED LIGHT W/ 90 MIN. BATTERY BACKUP
- ⬆ - SWITCH
- ⬆ - 3-WAY SWITCH
- ⬆ - GLIDER STYLE DIMMER SWITCH
- ⬆ - POWER PANEL
- ⬆ - 150W/HIGH PRESSURE SODIUM WALLPACK

**LIGHTING PLAN**

SCALE: 1/4"=1'-0"

SEE SHEET E-3 FOR ELECTRICAL NOTES AND PANEL SCHEDULE

DIMMER BANK #1 (DIM1)			
OKT NO	AREA	LOAD (VA)	CONTROLLER
1	CAN LGT. OVER STAIRS	1100	1
2	10" LGT. BARS	1500	2
3	15" LGT. BAR	1200	2
4	CAN LGT. OVER STAGE	800	2
		TOTAL =	4600