

DAMMON
ENGINEERING, INC.

CHIEF ENGINEER
EMMETT
DAMMON, P.E.
CHIEF ARCHITECT
ROBERT
WILTSE

1095 FLORIDA AVENUE
SLIDELL, LA, 70436
OFFICE: 985-649-5332
FAX: 985-641-5950

WEBSITE:
WWW.DAMMONENGINEERING.COM
EMAIL:
DAMMONENG@Bellsouth.net

ARCHITECTURE
ENGINEERING
STUDIES
PLANNING

INVESTIGATION
EXPERT WITNESS

EL-BETHEL
PENTECOSTAL
CHURCH

REV. EUGENE
WELLINGTON
ALLEN ROAD
SLIDELL, LA

PLUMBING
PLAN

REV:

SCALE: AS NOTED

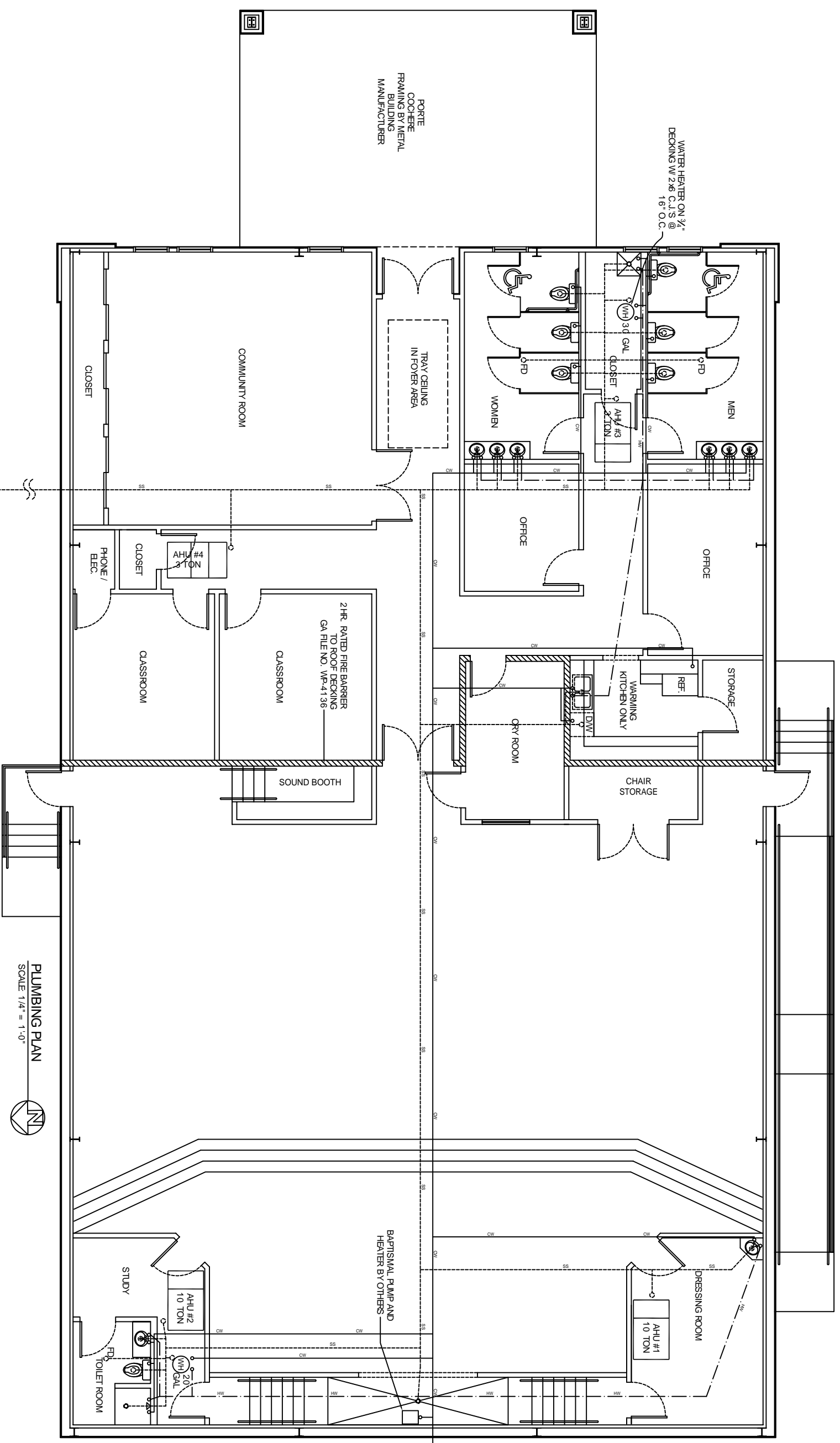
JOB#: 1819A

DATE: 11-19-08

SHEET 19

P-1

OF 20



PORTE
COCHERE
FRAMING BY METAL
BUILDING
MANUFACTURER

WATER HEATER ON 3/4"
DECKINGS W/ 2x6 C.J.S @
16" O.C.

NEW CHLORINATED SEWAGE
TREATMENT. MINIMUM
CAPACITY 1,090 GPD. SEE
SHEET C-4 FOR LOCATION.

LEGEND

- SS - NEW SANITARY SEWER LINE
- CW - NEW COLD WATER LINE
- HW - NEW HOT WATER LINE
- GREASE - NEW HOT WATER LINE

PLUMBING PLAN
SCALE 1/4" = 1'-0"

SEE SHEET P-2 FOR PLUMBING NOTES AND DETAILS.

FROM NEW 2" WELL ON
SITE. SEE SHEET C-4
FOR LOCATION