

DAMMON
ENGINEERING, INC.

CHIEF ENGINEER
EMMETT
DAMMON, P.E.
CHIEF ARCHITECT
ROBERT
WILTSE

1095 FLORIDA AVENUE
SLIDELL, LA. 70458
OFFICE: 985-649-5832
FAX: 985-641-5950

WEBSITE:
WWW.DAMMONENGINEERING.COM
EMAIL:
DAMMONENR@BELL.SOUTH.NET

ARCHITECTURE
ENGINEERING
STUDIES
PLANNING
INVESTIGATION
EXPERT WITNESS

EL-BETHEL
PENTECOSTAL
CHURCH

REV. EUGENE
WELLINGTON
ALLEN ROAD
SLIDELL, LA

LIGHTING
PLAN

REV:

SCALE: AS NOTED

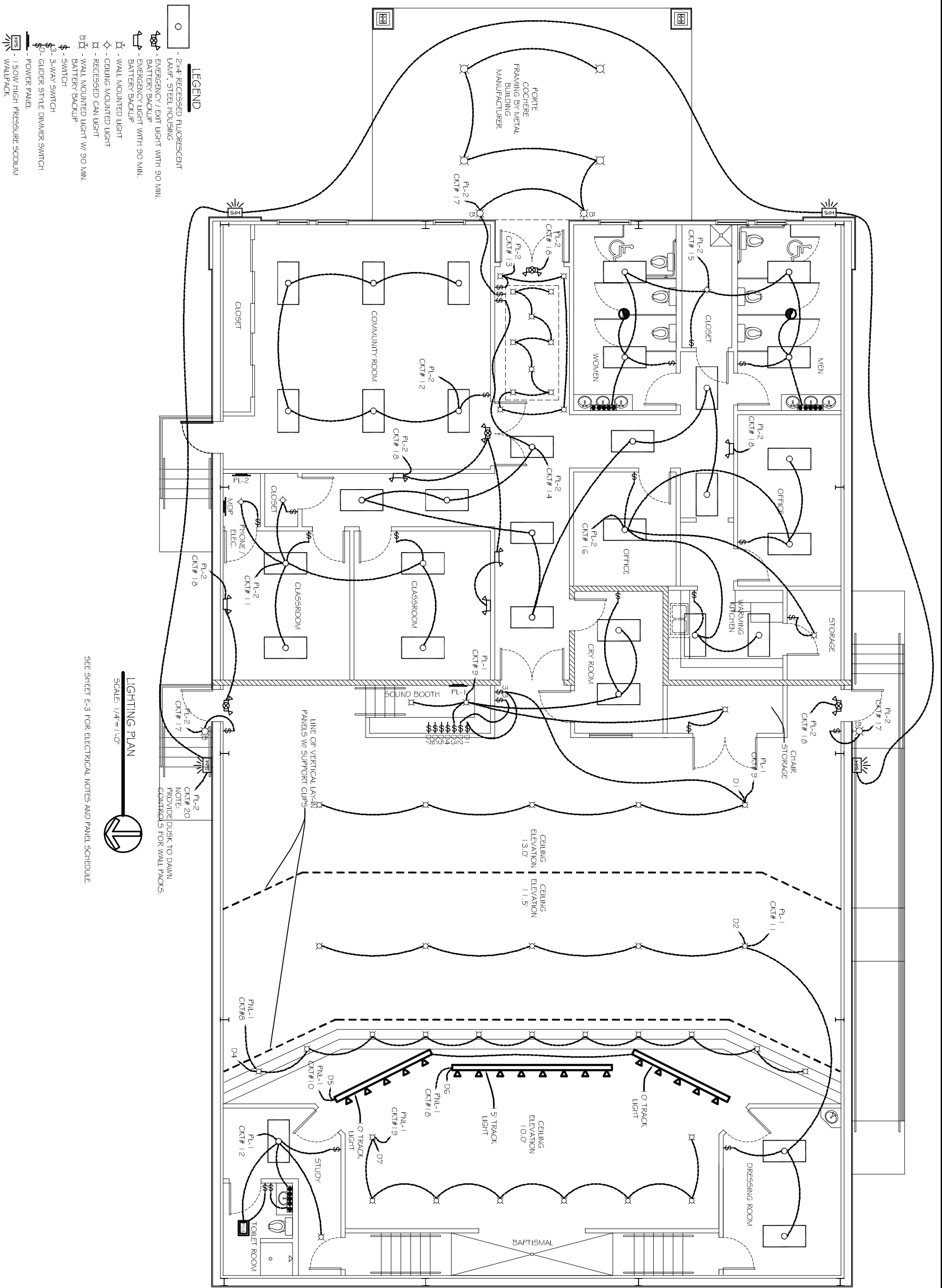
JOB#: 1819A

DATE: 11-19-08

SHEET 16

E-2

OF 20



LIGHTING PLAN
SCALE: 1/4"=1'-0"



SEE SHEET E-3 FOR ELECTRICAL NOTES AND PANEL SCHEDULE.

- LEGEND**
- - 2x4 RECESSED FLUORESCENT LAMP, STEEL HOUSING
 - ⊕ - EMERGENCY / EXIT LIGHT WITH 90 MIN. BATTERY BACKUP
 - ⊕ - EMERGENCY LIGHT WITH 90 MIN. BATTERY BACKUP
 - ⊕ - WALL MOUNTED LIGHT
 - ⊕ - CEILING MOUNTED LIGHT
 - ⊕ - RECESSED CAN LIGHT
 - B⊕ - WALL MOUNTED LIGHT W/ 90 MIN. BATTERY BACKUP
 - ⊕ - SWITCH
 - ⊕ - 3-WAY SWITCH
 - ⊕ - 3-WAY DIMMER SWITCH
 - ⊕ - POWER PANEL
 - ⊕ - 150W HIGH PRESSURE SODIUM WALLPACK