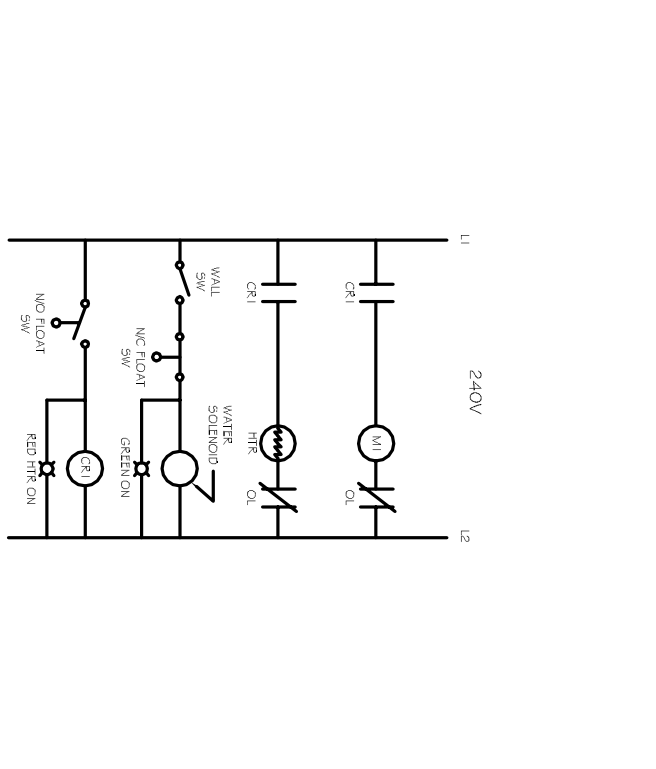
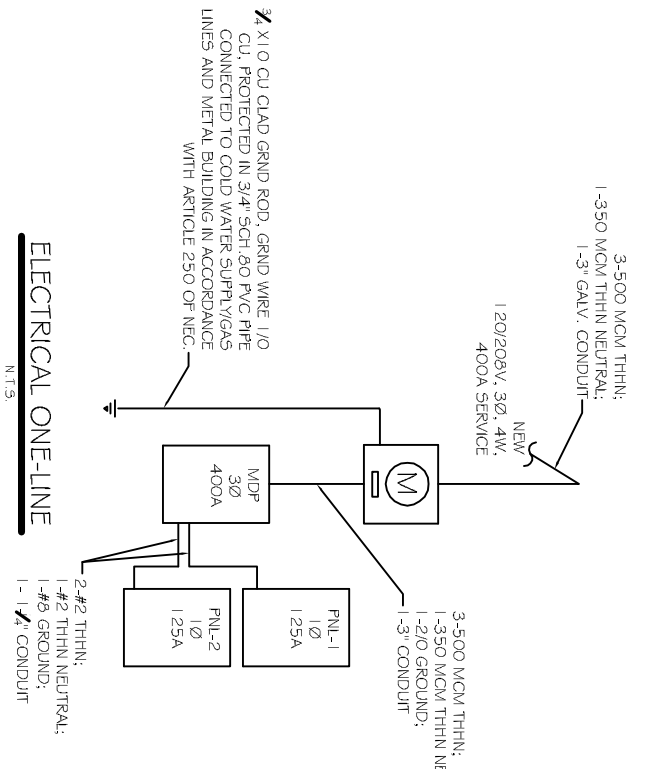


NO.	THIN SHEET NO.	LOAD DESCRIPTION	AMP	POLE	LOAD VOLT	NO. OF CIRCUITS	LOAD WATT	POLE AMP	LOAD DESCRIPTION	THIN SHEET NO.	CIR. NO.
1											
2	46	MC #1 COMPUTER LINE 10'	30	2	4800	1	4800	30	MC #2 COMPUTER LINE 10'	46	2
3											
4											
5											
6											
7											
8											
9	410	MC #4 COMPUTER LINE 3'	20	2	2160	1	2160	20	MC #3 COMPUTER LINE 3'	410	3
10											
11											
12											
13	44	PL-1	120	2	13700	1	13700	120	PL-2	44	4
14											
15											
16											
17											
18											
19	48	MC #1 120V W/OUT VOLT	30	2	3600	1	3600	30	MC #2 120V W/OUT VOLT	48	23
20											
21											
22											
23											
24											
25											
26	48	MC #1 120V W/OUT VOLT	30	2	3600	1	3600	30	MC #2 120V W/OUT VOLT	48	26
27											
28											
29											
30											
31	410	SPRING TELEPHONE	20	2	2160	1	2160	20	1/2" MTL	410	22
32											
33											
34											
35											
36											
37	412	SPRING	20	1	2160	1	2160	20	SPRING	412	24
38											
39	412	SPRING	20	1	2160	1	2160	20	SPRING	412	28
40											
41	412	SPRING	20	1	2160	1	2160	20	SPRING	412	42
42											

ELECTRICAL NOTES

- ALL WORK SHALL CONFORM TO THE LATEST EDITION OF THE NATIONAL ELECTRICAL CODE, THE GOVERNING ELECTRICAL CODE AND ALL OTHER INSPECTION DEPARTMENTS HAVING JURISDICTION. OBTAIN CERTIFICATES OR APPROVAL WHERE REQUIRED.
- ALL MATERIALS FURNISHED SHALL BE NEW AND SHALL BE U.L. LISTED.
- THE DRAWINGS INDICATE SIZE AND GENERAL LOCATION OF WORK. SCALE DIMENSIONS SHALL NOT BE USED. THE EXACT LOCATION AND LOCATIONS OF ALL LIGHTING FIXTURES, RECEPTACLES AND TELEPHONE OUTLETS, ETC. SHALL BE DETERMINED BY ACTUAL CONDITIONS IN THE FIELD.
- PRIOR TO BIDDING, CONTRACTOR SHALL VISIT THE JOB SITE AND FAMILIARIZE THEMSELVES WITH THE EXISTING CONDITIONS.
- ELECTRICAL CONTRACTOR SHALL COORDINATE HIS WORK WITH OTHER TRADES AND WITH OTHER CONTRACTORS WHOSE WORK MAY AFFECT THIS INSTALLATION.
- ELECTRICAL CONTRACTOR SHALL COORDINATE INCOMING ELECTRICAL SERVICE WITH UTILITY COMPANY AND INCLUDE IN HIS BID ALL CHARGES AND FEES INCURRED IN MODIFICATIONS.
- WHERE MORE THAN ONE SWITCH OCCURS IN THE SAME LOCATION, THEY SHALL BE INSTALLED IN A GANG TYPE BOX UNDER ONE COVER PLATE.
- ELECTRICAL CONTRACTOR SHALL COORDINATE THE TELEPHONE INSTALLATION WITH THE TELEPHONE COMPANY AND THE GENERAL CONTRACTOR.
- ELECTRICAL CONTRACTOR, BEFORE INSTALLING ANY OF THE WORK, SHALL SEE THAT IT DOES NOT INTERFERE WITH CLEARANCES REQUIRED FOR FINISHED COLUMNS, HUNG CEILINGS, PARTITIONS, WALLS, ETC. AS SHOWN IN THE ARCHITECTURAL DRAWINGS AND DETAILS. IF ANY WORK IS INSTALLED AND IT LATER DEVELOPS THAT SUCH DETAILS OR DESIGN CANNOT BE FOLLOWED, THE CONTRACTOR, AT HIS OWN EXPENSE, SHALL MAKE SUCH CHANGES IN THE WORK AS DIRECTED BY THE ARCHITECT.
- PERFORM TESTS REQUIRED BY THE OWNER OR THE ENGINEER IN CONNECTION WITH THE OPERATION OF THE ELECTRICAL SYSTEM IN THE BUILDING.
- ALL TESTS SHALL BE MADE IN ACCORDANCE WITH THE LATEST STANDARD OF THE IEEE AND THE NATIONAL ELECTRICAL CODE.
- MINIMUM CONDUCTOR SIZE SHALL BE #12, 600V INSULATION. MINIMUM SIZE CONDUIT SHALL BE 1/2" EMT FOR INTERIOR USE, AND 1" RIGID ALUMINUM FOR EXTERIOR USE. USE THE MC CABLE COPPER FOR CONDUIT AND WIRE FOR LIGHTS AND RECEPTACLE CIRCUITS. EXTERIOR FITTINGS SHALL BE CAST BOXES AND COVERS. INTERIOR FITTINGS SHALL BE CAST WHERE EXPOSED ON WALLS. STAMPED BOXES MAY BE USED ABOVE CEILINGS IN AIR CONDITIONED SPACES. MC MAY BE USED FOR LIGHTING WIRING.
- CONTRACTOR SHALL INSTALL WIRING AND OTHER CIRCUIT COMPONENTS TO MATCH EQUIPMENT ACTUALLY INSTALLED.
- INSTALL GROUND FAULT RECEPTACLES AT RECEPTACLE LOCATIONS WITHIN 5 FEET OF SWIS OR LAVATORIES, AND AT EXTERIOR LOCATIONS. EXTERIOR RECEPTACLES SHALL ALSO BE WATERPROOF.
- BONDING AND GROUNDING SHALL BE IN ACCORDANCE WITH NFPA 70:230-63, NFPA 250-23, 250-71 AND 250-72.
- GROUND NEUTRAL IN ACCORDANCE WITH NFPA 70:250-23b.
- FUSES SHALL BE 11T CLASS K5, 250 VOLT, 200000 AMP INTERRUPTING CAP.
- PROVIDE SERVICES OF A FIRE SMOKE DETECTION AND ALARM COMPANY TO DESIGN AND INSTALL ALARM SYSTEM TO MEET REQUIREMENTS OF THE STATE FIRE MARSHAL.
- EXTERIOR LIGHTING SHALL BE SHADDED OR INWARDLY DIRECTED IN SUCH A MANNER THAT NO DIRECT LIGHTING OR GLEAM IS CAST BEYOND THE PROPERTY LINE. THE INTENSITY OF SUCH LIGHTING SHALL NOT EXCEED ONE FOOT CANDLE AS MEASURED AT THE ADJUTING PROPERTY LINE.
- ALL ELECTRICAL, MECHANICAL AND PLUMBING PENETRATING FIRE PARTITIONS SHALL BE FIRE CALLED. PENETRATIONS THROUGH RATED CONSTRUCTION SHALL BE SEALED WITH A MATERIAL CAPABLE OF PREVENTING THE PASSAGE OF FLAMES AND HOT GASES WHEN TESTED IN ACCORDANCE WITH ASTM E-151.
- CONTRACTOR SHALL BALANCE ALL PANELS.

ELECTRICAL LOAD SUMMARY			
LOAD SOURCE	10-1VA	30-1VA	10-1W
BUILDING LIGHTING	17350		
ELECTRIC WATER HEATING	7300		
HEAT PUMP			
SUPPLEMENTAL HEAT SYSTEM	35580		
AIR CONDITIONING	40000		
ELECTRIC HEATING (RADIANT)	40000		
COOLING	1200		
REFRIGERATION	1000		
RECEPTACLES (STANDARD)	25600		
RECEPTACLES (COMPUTER)			
TOTAL MOTORS (EXCLUDE 1/2HP)			
PARTING LOT/ EXTERIOR LIGHTING			
MISCELLANEOUS			
OTHER (SPECIFY)			



NO.	THIN SHEET NO.	LOAD DESCRIPTION	AMP	POLE	LOAD VOLT	NO. OF CIRCUITS	LOAD WATT	POLE AMP	LOAD DESCRIPTION	THIN SHEET NO.	CIR. NO.
1											
2	412	CLASSROOM RECEPT	20	1	1200	1	1200	20	CLASSROOM CONTROL RECEPT	412	2
3	412	OFFICE RECEPT	20	1	1200	1	1200	20	OFFICE RECEPT	412	4
4											
5	412	LOWVOLT CHIEF RECEPT	20	1	1200	1	1200	20	LOWVOLT CHIEF RECEPT	412	6
6											
7	412	20 BALL W/OUT RECEPT	20	1	14400	1	14400	20	20 BALL W/OUT RECEPT	412	8
8	412	20 BALL W/OUT RECEPT	20	1	14400	1	14400	20	20 BALL W/OUT RECEPT	412	13
9	412	CLASSROOM / CLASS RECEPT	20	1	3600	1	3600	20	CLASSROOM / CLASS RECEPT	412	18
10											
11	412	PROVIDER RECEPT	20	1	14400	1	14400	20	PROVIDER RECEPT	412	14
12											
13	412	CHIEF RECEPT	20	1	1920	1	1920	20	CHIEF RECEPT	412	16
14											
15	412	20 BALL W/OUT RECEPT	20	1	14400	1	14400	20	20 BALL W/OUT RECEPT	412	19
16											
17	412	20 BALL W/OUT RECEPT	20	1	14400	1	14400	20	20 BALL W/OUT RECEPT	412	20
18											
19	412	20 BALL W/OUT RECEPT	20	1	14400	1	14400	20	20 BALL W/OUT RECEPT	412	22
20											
21	412	SPRING	20	1	2160	1	2160	20	SPRING	412	24
22											
23											
24											
25											
26											
27											
28											
29											
30											

REV:	
SCALE:	AS NOTED
JOB#:	1819A
DATE:	11-19-08
SHEET	17

E-3