

DAMMON
ENGINEERING, INC.

CHIEF ENGINEER
EMMETT
DAMMON, P.E.

CHIEF ARCHITECT
ROBERT
WILTSE

1095 FLORIDA AVENUE
SLIDELL, LA, 70456
OFFICE: 985-649-5832
FAX: 985-641-5950

WEBSITE:
WWW.DAMMONENGINEERING.COM
EMAIL:
DAMMONENG@BELLFLOW.NET

ARCHITECTURE
ENGINEERING
STUDIES
PLANNING
INVESTIGATION
EXPERT WITNESS

EL-BETHHEL
PENTECOSTAL
CHURCH

REV. EUGENE
WELLINGTON
ALLEN ROAD
SLIDELL, LA

PLUMBING
PLAN

REV:

SCALE: AS NOTED

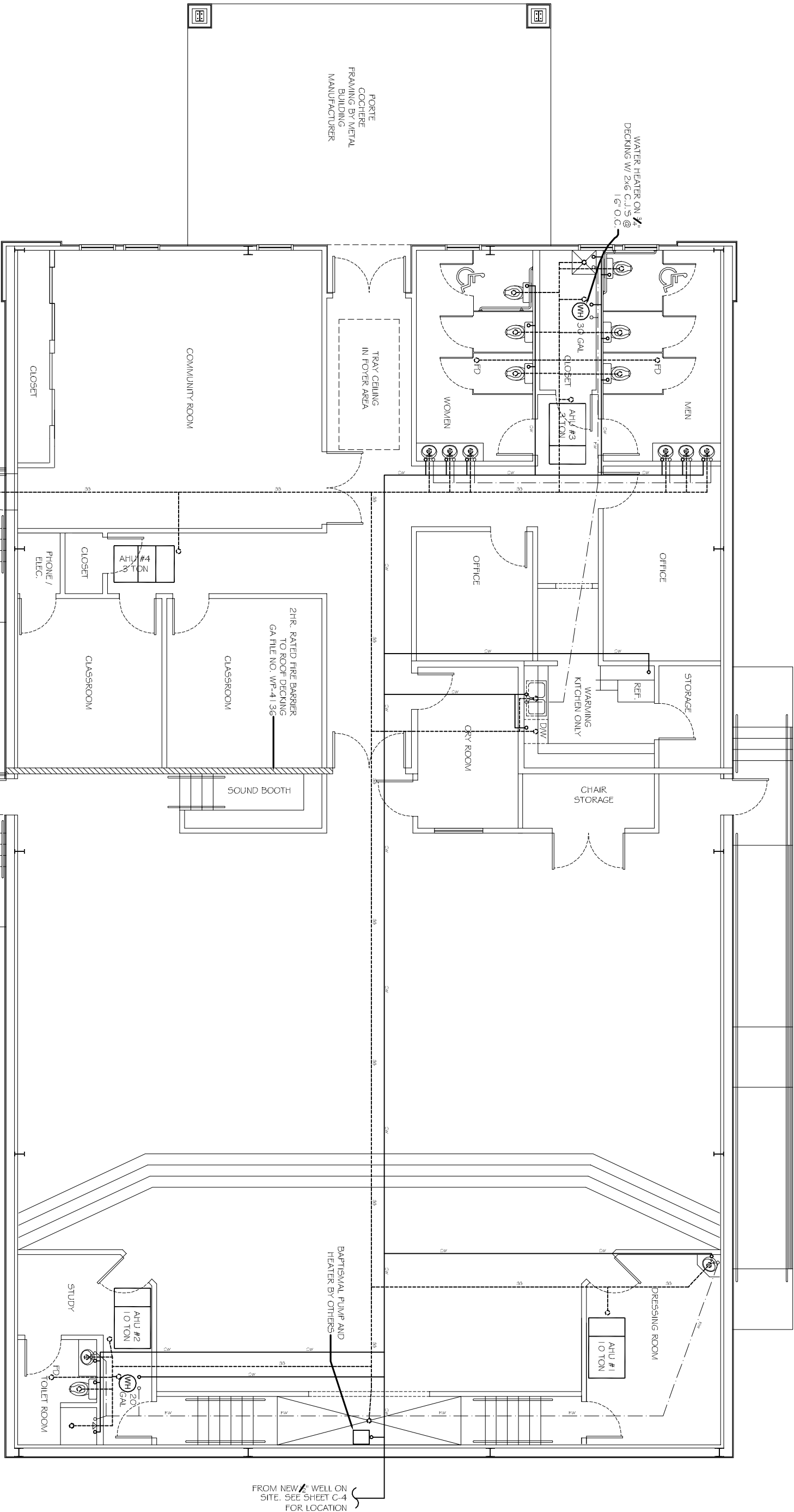
JOB#: 1819A

DATE: 11-19-08

SHEET 19

P-1

OF 20



NEW CHLORINATED SEWAGE TREATMENT. MINIMUM CAPACITY 1,090 GPD. SEE SHEET C-4 FOR LOCATION

- LEGEND**
- SS - NEW SANITARY SEWER LINE
 - CW - NEW COLD WATER LINE
 - HW - NEW HOT WATER LINE
 - GREASE - NEW HOT WATER LINE

PLUMBING PLAN
SCALE: 1/4" = 1'-0"

SEE SHEET P-2 FOR PLUMBING NOTES AND DETAILS.