

DAMMON
ENGINEERING, INC.

CHIEF ENGINEER
EMMETT
DAMMON, P.E.
CHIEF ARCHITECT
ROBERT
WILTSE

1095 FLORIDA AVENUE
SLIDELL, LA. 70458
OFFICE: 985-649-5832
FAX: 985-641-5950

WEBSITE:
WWW.DAMMONENGINEERING.COM
EMAIL:
DAMMONEN@BELLSOUTH.NET

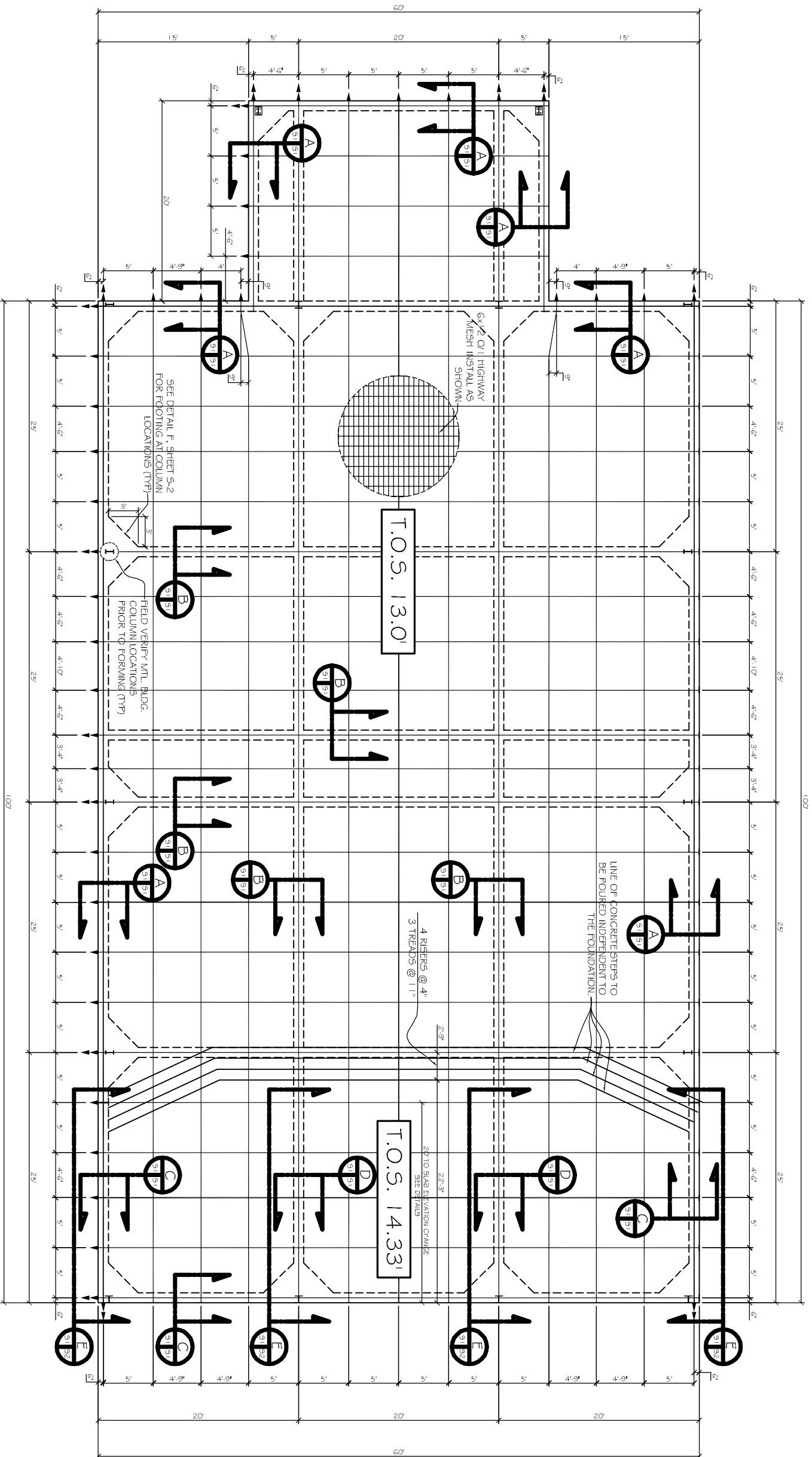
ARCHITECTURE
ENGINEERING
STUDIES
PLANNING
INVESTIGATION
EXPERT WITNESS

EL-BETHEL
PENTECOSTAL
CHURCH

REV. EUGENE
WELLINGTON
ALLEN ROAD
SLIDELL, LA

FOUNDATION
PLAN

REV:	SCALE: AS NOTED
JOB#: 1819A	DATE: 11-19-08
SHEET 8	
OF 20	



FOUNDATION PLAN
SCALE: 3/16"=1'-0"

