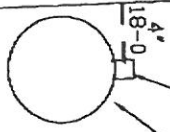
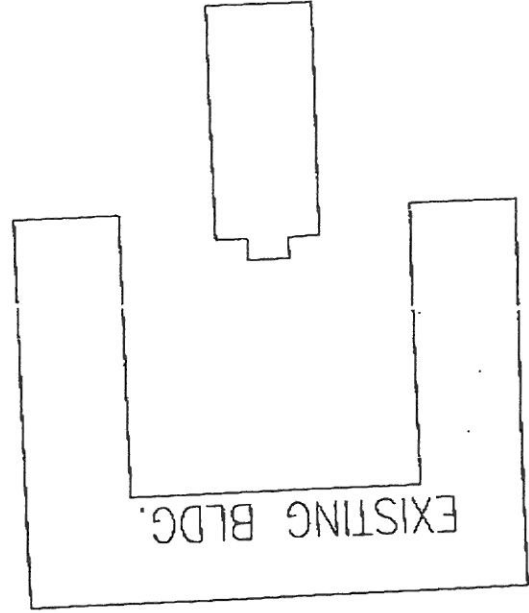
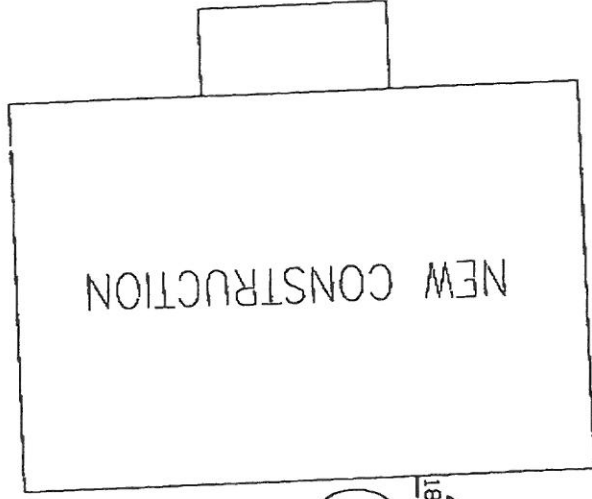


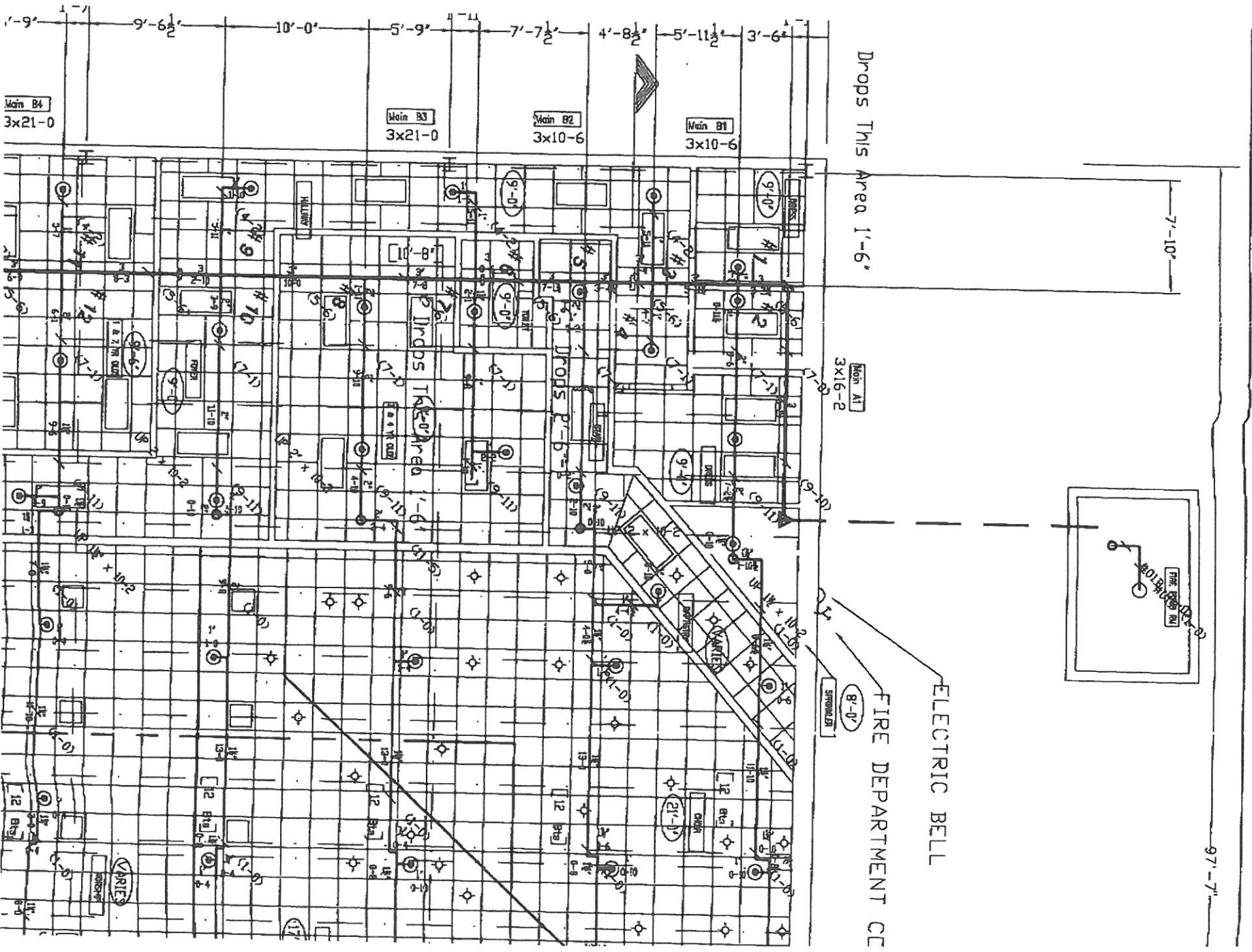
GEN NOTES:
 UNDERGROUND IS SHD
 INSTALLATION AND MAT
 PIPE IS C-900 TO 5'-
 MINIMUM DEPTH OF CO



FIRE PUMP HOUSE

13902 GAL CAPACITY WATER STORAGE TANK

x 8-2



$$\begin{array}{r} 0844 \\ 0891 \times \\ \hline 2800 \end{array}$$

EL BETHEL REVISIONS

TOTAL FOOTPRINT - 6000 SF

SANC. 3390 SF =

- (1660 - 1320) = 340 ~ aisles

- 165 ~ stairs

- 40 ~ altar

- 36 ~ pulpit

- 340 ~ walls/bathroom

TOTAL = 2809 ÷ 15 = 186 occ.

FELLOWSHIP = 2610

- (470 + 56) = 526 ~ bathrooms/closets

- ~~440~~ 140 ~ clst in Comm room

- 180 ~ kitchen

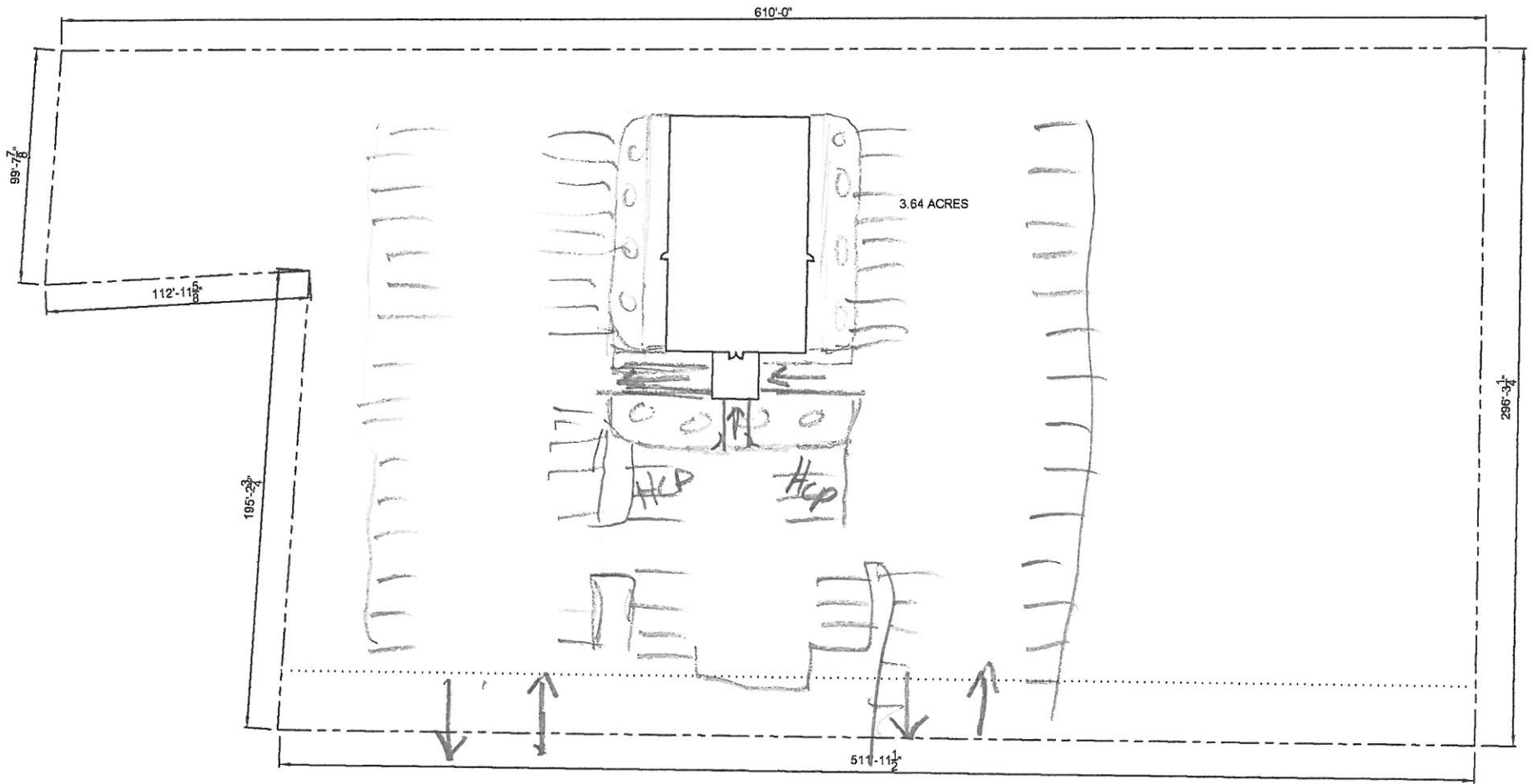
- (170 + 108) = 278 ~ offices

1486 ÷ 15 = 99.0 occ.

KITCHEN 108 SF - 1 occ.

OFFICES 278 S.F. ÷ 100 = 2.7 ~ 3 occ.

291 occupants total



BLD'G "A"

NOT FOR CONSTRUCTION

