

PANEL: LP-1
LOCATION: TABERNACLE BAPTIST CHURCH ELECTRICAL CLOSET
FEEDER SOURCE: CLECO

VOLTAGE: 120/240V, 125A 1 ϕ , 3W, MLO
SURFACE MOUNTED W/EQUIPMENT GND BAR

CKT. NO.	THHN WIRE SIZE	LOAD DESCRIPTION LOCATION	BREAKER		LOAD (VA)	A ϕ	B ϕ	LOAD (VA)	BREAKER		LOAD DESCRIPTION LOCATION	THHN WIRE SIZE	CKT. NO.	
			AMP	POLE					POLE	AMP				
1	#10	WATER HEATER	60	2	3600	A	B	1850	2	50	STOVE	#8	2	
3					3600			1850						
5	#12	REFRIGERATOR	20	1	1440	A	B	2400	2	30	ICE MACHINE	#10	6	
7	#12	REFRIGERATOR	20	1	1440	A	B	2400	2	30	ICE MACHINE	#10	8	
9	#12	CLASS I AND HALL RECEPTACLES	20	1	1200	A	B	460	1	30	WATER FOUNTAIN	#12	10	
11	#12	OFFICE AND HALL RECEPTACLES	20	1	1080	A	B	600	1	30	KITCHEN FLORESCENT LIGHTS	#12	12	
13	#10	HALL AND HALLWAY RECEPTACLES	20	1	600	A	B	200	1	50	KITCHEN PANTRY FLORESCENT LIGHT	#12	14	
15	#10	HALL RECEPTACLES	20	1	240	A	B	400	1	50	CLASS I FLORESCENT	#12	16	
17	#12	KITCHEN RECEPTACLES	20	1	480	A	B	200	1	30	CLASS I FLORESCENT CLOSET	#12	18	
19	#12	KITCHEN RECEPTACLES	20	1	240	A	B	1200	1	30	HALL FLORESCENT LIGHTS	#12	20	
21	#12	KITCHEN RECEPTACLES	20	1	240	A	B	1200	1	20	OFFICE AND EXTERIOR LIGHTS	#12	22	
23	#12	RESTROOM LIGHT/FAN AND RECEPTACLES	20	1	420	A	B	1400	1	20	HALL AND HALLWAY FLORESCENT LIGHTS	#12	24	
25	#12	RESTROOM LIGHT/FAN AND RECEPTACLES	20	1	420	A	B	1200	1	20	HALL FLORESCENT LIGHTS	#12	26	
27	#12	SPARE	20	1	-	A	B	1600	1	20	HALL CAN LIGHTS	#12	28	
29	#12	SPARE	20	1	-	A	B	900	1	20	EMERGENCY/EXIT LIGHTS	#12	30	
31	#12	SPARE	20	1	-	A	B	-	1	20	SPARE	#12	32	
33	#12	SPARE	20	1	-	A	B	-	1	20	SPARE	#12	34	
35	-	SPACE	-	-	-	A	B	-	1	20	SPARE	#12	36	
37	-	SPACE	-	-	-	A	B	-	-	-	SPACE	-	38	
39	-	SPACE	-	-	-	A	B	-	-	-	SPACE	-	40	
41	-	SPACE	-	-	-	A	B	-	-	-	SPACE	-	42	
					TOTAL CONNECTED LOAD (VA)= 32,860									
					A ϕ =16,390		B ϕ =16,470							

SOLID NEUTRAL
NEUTRAL WIRE (W)

GROUND BUS
GROUND WIRE (G)

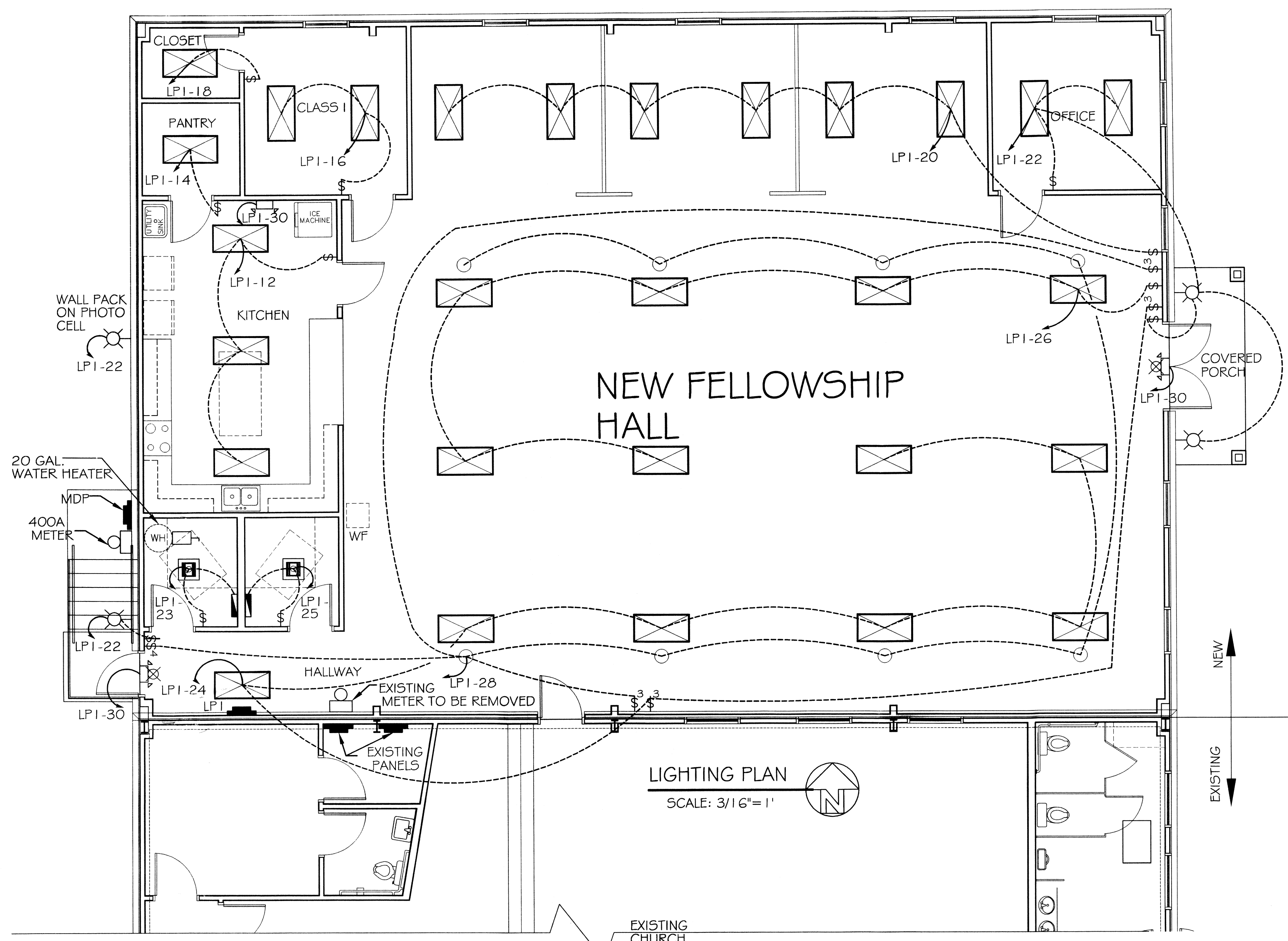
PANEL: MDP-1
LOCATION: TABERNACLE BAPTIST CHURCH ELECTRICAL CLOSET
FEEDER SOURCE: CLECO

VOLTAGE: 120/240V, 400A 1 ϕ , 3W, MB
SURFACE MOUNTED W/EQUIPMENT GND BAR; NEMA 3R

CKT. NO.	THHN WIRE SIZE	LOAD DESCRIPTION LOCATION	BREAKER		LOAD (VA)	A ϕ	B ϕ	LOAD (VA)	BREAKER		LOAD DESCRIPTION LOCATION	THHN WIRE SIZE	CKT. NO.	
			AMP	POLE					POLE	AMP				
1	#6	A/C COMPRESSOR #1 5 TON	60	2	4800	A	B	7500	2	70	AHU #1 15 KW	#6	2	
3					4800			7500						
5	#6	A/C COMPRESSOR #2 5 TON	60	2	4800	A	B	7500	2	70	AHU #2 15 KW	#6	6	
7					4800			7500						
9	#10	A/C COMPRESSOR #3 3 TON	30	2	3000	A	B	2500	2	30	AHU #3 5 KW	#10	10	
11					3000			2500						
13	#2	NEW LP1	125	2	16390	A	B	20000	2	225	EXISTING P1	3/0	14	
15					16470			20000						
17	#6	A/C RELOCATED A/C FROM P1	60	2	4800	A	B	4800	1	30	SPARE	#10	18	
19	#6	A/C RELOCATED A/C FROM P1	60	2	4800	A	B	4800	1	30	SPARE	#10	20	
21	#12	SPARE	20	1	-	A	B	-	1	20	SPARE	#12	22	
23	#12	SPARE	20	1	-	A	B	-	1	20	SPARE	#12	24	
25	#12	SPARE	20	1	-	A	B	-	1	20	SPARE	#12	26	
27	#12	SPARE	20	1	-	A	B	-	1	20	SPARE	#12	28	
29	#12	SPARE	20	1	-	A	B	-	1	20	SPARE	#12	30	
31	#12	SPARE	20	1	-	A	B	-	1	20	SPARE	#12	32	
33	#12	SPACE	20	1	-	A	B	-	1	20	SPACE	#12	34	
35	#12	SPACE	20	1	-	A	B	-	1	20	SPACE	#12	36	
37	#12	SPACE	20	1	-	A	B	-	1	20	SPACE	#12	38	
39	-	SPACE	-	-	-	A	B	-	1	20	SPACE	#12	40	
41	-	SPACE	-	-	-	A	B	-	-	-	SPACE	-	42	
					TOTAL CONNECTED LOAD (VA)= 142660									
					A ϕ =71290		B ϕ =71370							

SOLID NEUTRAL
NEUTRAL WIRE (W)

GROUND BUS
GROUND WIRE (G)



LIGHTING SCHEDULE

TYPE	DESCRIPTION	TOTAL WATTS
○	4" ARCHITECTURAL HIGH LUMEN LED DOWNLIGHT, MAXLUME MODEL HH4-LED (OR EQUAL)	32W
□	EXHAUST VENT/LIGHT COMBO FIXTURE	90W
⊕	EMERGENCY LIGHT W/ 90 MIN. BATTERY BACKUP	12W
⊗	EXIT/EMERGENCY LIGHT COMBO W/ 90 MIN. BATTERY BACKUP	32W
⊠	2' x 4' FLORESCENT 2-LAMP T8, SURFACE MOUNT FIXTURE, LITHONIA LIGHTING MODEL 2RT8SX (OR EQUAL)	32W

NOTES:
1. CONNECT ALL EMERGENCY / EXIT LIGHT FIXTURES TO NEAREST CONSTANT POWER SOURCE.

SYMBOL LEGEND

○	- SWITCH
⊕	- 3-WAY SWITCH
⊗	- 4-WAY SWITCH
⊠	- POWER PANEL

432476
REVIEWED FOR
STATE FIRE MARSHAL
AS PER REVIEW LETTER
BY: WILLIAM D. JONES, ARCHITECT, CDO
William D. Jones

DAMMON
ENGINEERING, INC.
Architects & Engineers

DAMMON ENGINEERING, INC.
2445 FOURTH STREET
SUITE 101
SLIDELL, LA 70458
PHONE: 985-649-5832
FAX: 985-641-5950

TABERNACLE BAPTIST CHURCH
NEW FELLOWSHIP HALL

JOB No: 2171 DATE: 04-30-2013 CHECKED BY: CD
DRAWN BY: JCT

REVISIONS

#	DESCRIPTION	DATE

432476
STATE OF LOUISIANA
REGISTERED ARCHITECT
51613

LIGHTING PLAN

SHEET No: 12 OF 13
E-2