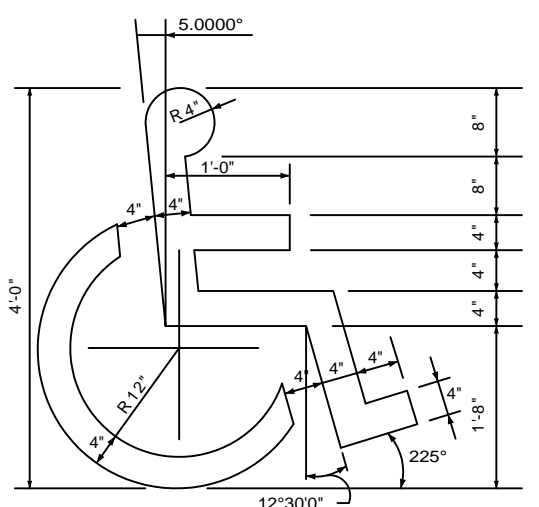


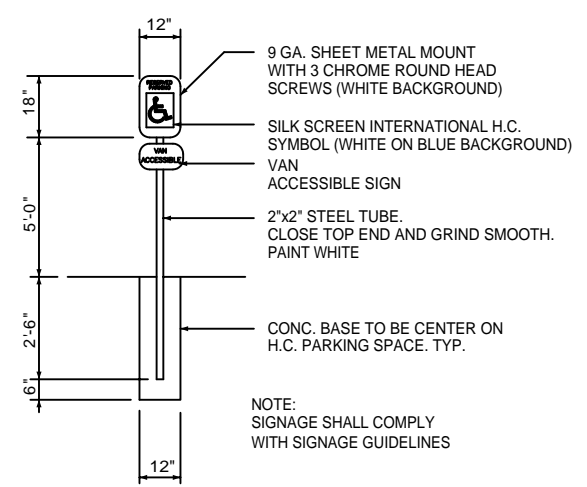
PARKING REQUIREMENTS:
 231 OCCUPANTS @ 1 PARKING SPACES / 5 OCCUPANTS
 = 46 SPACES, 46 PARKING SPACES @ 1 HCP. SPACE / 25
 NORMAL SPACES = 2 HCP SPACES, TOTAL PARKING SPACES
 REQUIRED = 48 SPACES (2 HCP)

PARKING PROVIDED:
 58 REGULAR SPACES AND 2 HCP. SPACES (INCLUDING
 OFF-STREET PARKING-SEE SHEET C-3)
 TOTAL PARKING PROVIDED: 60 SPACES

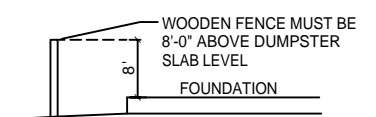
SITE LIGHTING
 EXTERIOR LIGHTING SHALL BE SHADED OR INWARDLY DIRECTED
 IN SUCH A MANNER SO THAT NO DIRECT LIGHTING OR GLARE
 BE CAST BEYOND THE PROPERTY LINE. THE INTENSITY OF SUCH
 LIGHTING SHALL NOT EXCEED ONE FOOT CANDLE AS MEASURED
 AT THE ABUTTING PROPERTY LINE.



HANDICAP SYMBOL DETAIL
 N. T. S.



HANDICAP PARKING SIGN
 N. T. S.



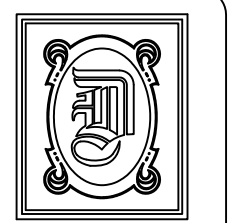
WOODEN FENCE DETAIL
 N.T.S.

LEGEND

- - - - - PROPERTY LINE
- - - - - BUILDING SETBACK
- - - - - LANDSCAPING SETBACK MINIMUM
- - - - - UTILITY / EASEMENT LINE
- - - - - NEW BUILDING OUTLINE
- ♿ - HANDICAP PARKING
- - HANDICAP PARKING SIGN
- - TRASH RECEPTACLE

HCP RAMP NOTE(TYP):
 3 1/2" MAX. RISE. PROVIDE
 "DETECTABLE WARNING" ON RAMP.
 CUT 1/4" DEEP GROOVES @ 2-3" O.C.
 SCORED INTO CONCRETE AND PAINTED.
 TYPICAL @ ALL RAMPS LEADING INTO
 VEHICULAR AREAS. (MAX SLOPE 1:12)

SITE PLAN
 SCALE: 1"=10'-0"



DAMMON
 ENGINEERING, INC.

CHIEF ENGINEER
 EMMETT
 DAMMON, P.E.

CHIEF ARCHITECT
 ROBERT
 WILTSE

1095 FLORIDA AVENUE
 SLIDELL, LA. 70458
 OFFICE: 985-649-5832
 FAX: 985-641-5950

WEBSITE:
 WWW.DAMMONENGINEERING.COM

EMAIL:
 DAMMONENG@BELLSOUTH.NET

ARCHITECTURE
 ENGINEERING
 STUDIES
 PLANNING
 INVESTIGATION
 EXPERT WITNESS

NEW
CHURCH

TABERNACLE
 BAPTIST CHURCH
 2445 FOURTH AVE.
 SLIDELL, LA

SITE
PLAN

REV:

SCALE: AS NOTED

JOB#: 2050

DATE: 2-8-10

SHEET 3

C-2

OF 25