

DAMMON ENGINEERING, INC.

CHIEF ENGINEER
EMMETT
DAMMON, P.E.

CHIEF ARCHITECT
ROBERT
WILTSE

1095 FLORIDA AVENUE
SLIDELL, LA. 70458
OFFICE: 985-649-5832
FAX: 985-641-5950

WEBSITE:
WWW.DAMMONENGINEERING.COM

EMAIL:
DAMMONENG@BELLSOUTH.NET

ARCHITECTURE
ENGINEERING
STUDIES
PLANNING
INVESTIGATION
EXPERT WITNESS

NEW CHURCH

TABERNACLE
BAPTIST CHURCH
2445 FOURTH AVE.
SLIDELL, LA

SITE PAVING PLAN

REV:

SCALE: AS NOTED

JOB#: 2050

DATE: 2-8-10

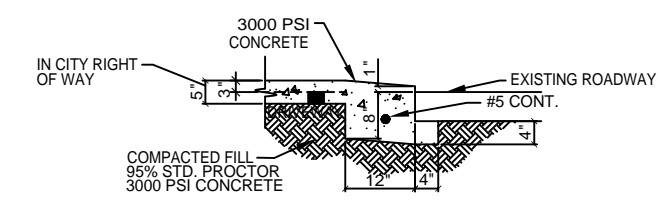
SHEET 8

C-7

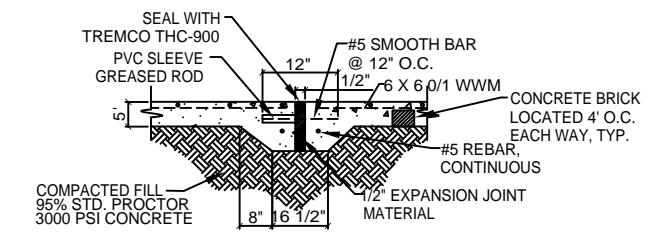
OF 25

LEGEND:

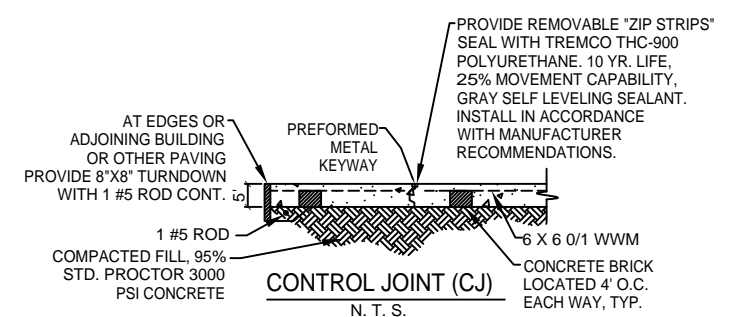
- PROPERTY LINE
- UTILITY / EASEMENT LINE
- BUILDING SETBACK MINIMUM
- LANDSCAPING SETBACK MINIMUM
- NEW BUILDING
- NEW DROP INLET w/TEMP. SILT FENCING
- CONTROL JOINT
- EXPANSION JOINT
- T.O. GRATE ELEVATION
- INVERT ELEVATION
- NEW ELEVATIONS
- EXISTING ELEVATIONS
- TEMPORARY SILT FENCING
- NEW 6" CURB, SEE DETAIL THIS SHEET



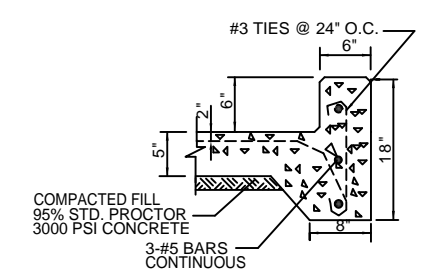
DRIVEWAY SECTION (DS)
N.T.S.



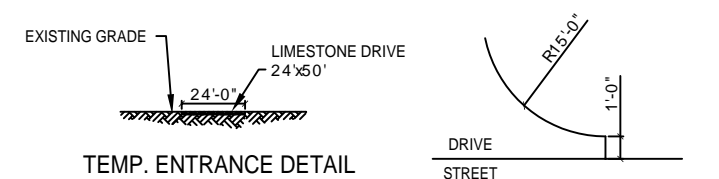
EXPANSION JOINT (EJ)
N.T.S.



CONTROL JOINT (CJ)
N.T.S.



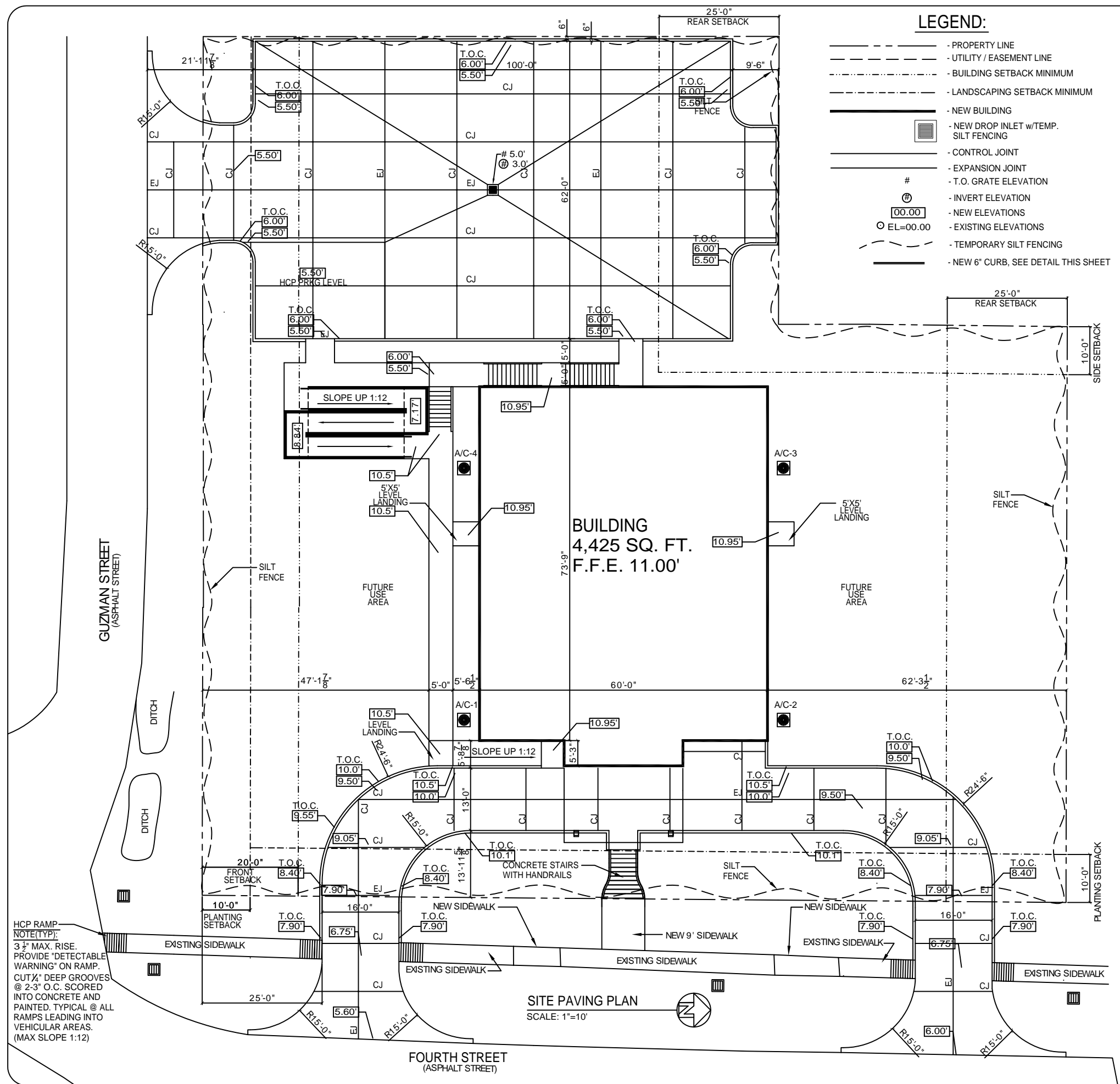
TYPICAL CURB DETAIL
N.T.S.



TEMP. ENTRANCE DETAIL
N.T.S.



TYPICAL ENTRANCE DETAIL
N.T.S.



SITE PAVING PLAN
SCALE: 1"=10'

HCP RAMP
NOTE(TYP):
3 1/2" MAX. RISE.
PROVIDE "DETECTABLE
WARNING" ON RAMP.
CUT 1/4" DEEP GROOVES
@ 2-3" O.C. SCORED
INTO CONCRETE AND
PAINTED. TYPICAL @ ALL
RAMPS LEADING INTO
VEHICULAR AREAS.
(MAX SLOPE 1:12)

FOURTH STREET
(ASPHALT STREET)

GUZMAN STREET
(ASPHALT STREET)

BUILDING
4,425 SQ. FT.
F.F.E. 11.00'