



**DAMMON**  
ENGINEERING, INC.

CHIEF ENGINEER  
EMMETT  
DAMMON, P.E.

CHIEF ARCHITECT  
ROBERT  
WILTSE

1095 FLORIDA AVENUE  
SUDELL, LA. 70458  
OFFICE 985-649-5832  
FAX 985-641-5950

WWW.DAMMONENGINEERING.COM  
EMAIL:  
DAMMONENG@BELL.SOUTH.NET

ARCHITECTURE  
ENGINEERING  
STUDIES  
PLANNING  
INVESTIGATION  
EXPERT WITNESS

**NEW  
CHURCH**

TABERNACLE  
BAPTIST CHURCH  
2445 FOURTH ST.  
SUDELL, LA

**SITE  
PLAN**

REV:

SCALE: AS NOTED

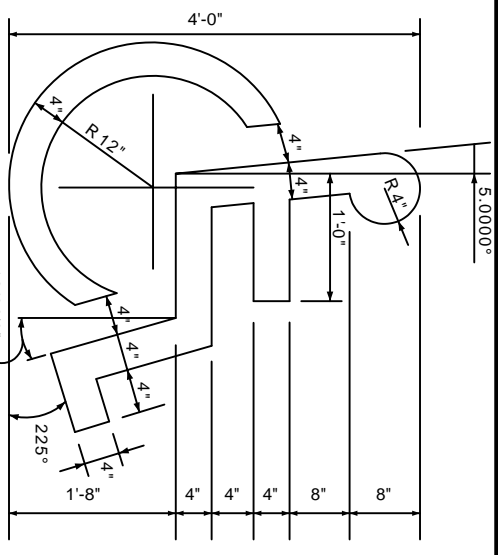
JOB#: 2050

DATE: 2-8-10

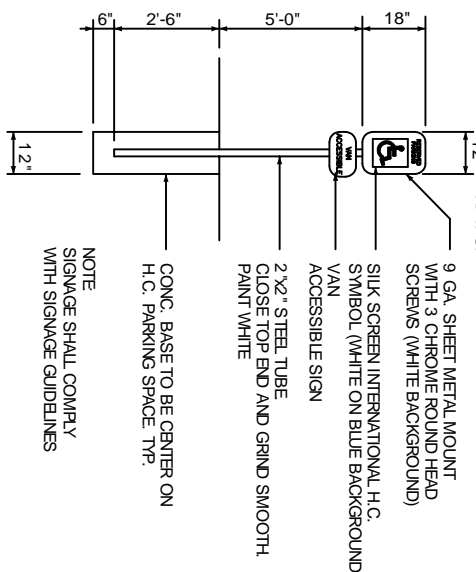
SHEET 3

**C-2**

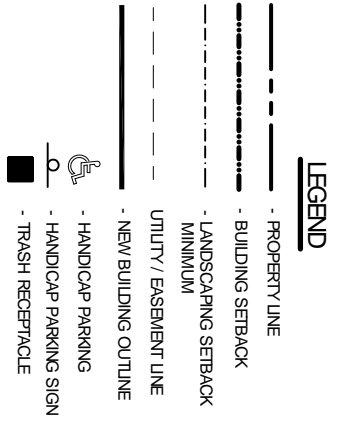
OF 25



**HANDICAP SYMBOL DETAIL**



**HANDICAP PARKING SIGN**



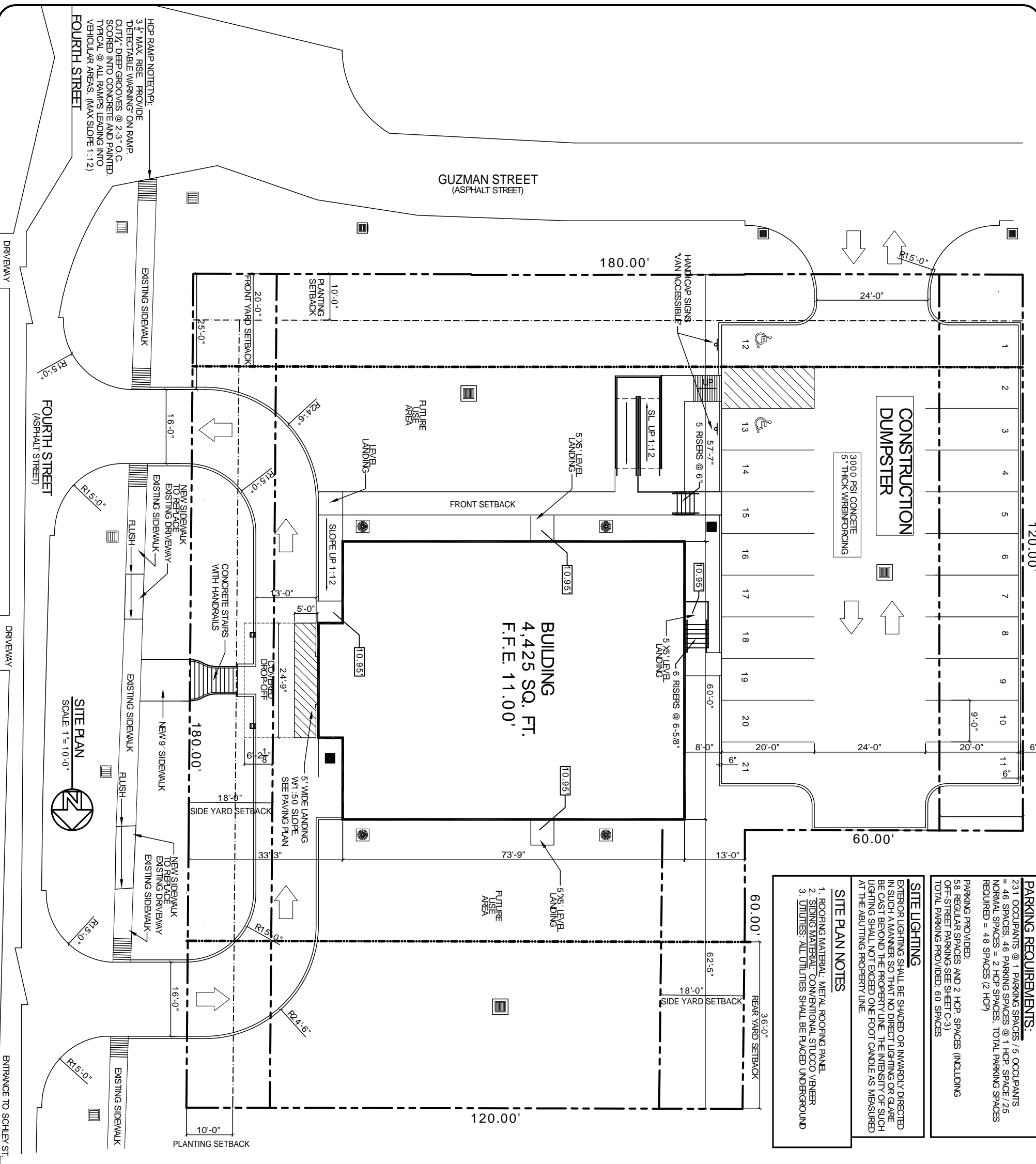
**LEGEND**

**PARKING REQUIREMENTS:**  
231 OCCUPANTS @ 1 PARKING SPACES / 5 OCCUPANTS  
= 46 SPACES, 46 PARKING SPACES @ 1 HCP SPACE / 25  
NORMAL SPACES = 2 HCP SPACES, TOTAL PARKING SPACES  
REQUIRED = 48 SPACES (2 HCP)

PARKING PROVIDED:  
58 REGULAR SPACES AND 2 HCP SPACES (INCLUDING  
OFF-STREET PARKING-SEE SHEET C-3)  
TOTAL PARKING PROVIDED: 60 SPACES

**SITE LIGHTING**  
EXTERIOR LIGHTING SHALL BE SHADED OR INWARDLY DIRECTED  
IN SUCH A MANNER SO THAT NO DIRECT LIGHTING OR GLARE  
BE CAST BEYOND THE PROPERTY LINE. THE INTENSITY OF SUCH  
LIGHTING SHALL NOT EXCEED ONE FOOT CANDLE AS MEASURED  
AT THE ADJUTING PROPERTY LINE

**SITE PLAN NOTES**  
1. ROOFING MATERIAL: METAL ROOFING PANEL  
2. SIDING MATERIAL: CONVENTIONAL STUCCO VENER  
3. UTILITIES: ALL UTILITIES SHALL BE PLACED UNDERGROUND



**SITE PLAN**  
SCALE: 1"=10'-0"

