

DAMMON
ENGINEERING, INC.

CHIEF ENGINEER
EMMETT
DAMMON, P.E.
CHIEF ARCHITECT
ROBERT
WILTSE

1095 FLORIDA AVENUE
SUITE 114, 70458
OFFICE: 985-649-5892
FAX: 985-641-5950

WEBSITE:
WWW.DAMMONENGINEERING.COM
EMAIL:
DAMMONENG@DDELSOUTH.NET

ARCHITECTURE
ENGINEERING
STUDIES
PLANNING
INVESTIGATION
EXPERT WITNESS

NEW
CHURCH
TABERNACLE
BAPTIST
CHURCH
2445 FOURTH ST.
SUDBL, LA

REFLECTED
CEILING
PLAN

REV: 4-21-10

SCALE: AS NOTED

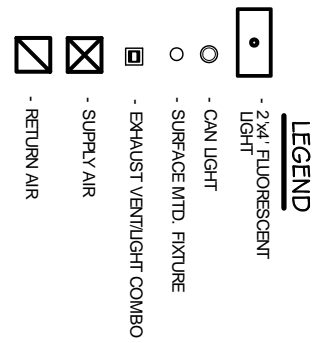
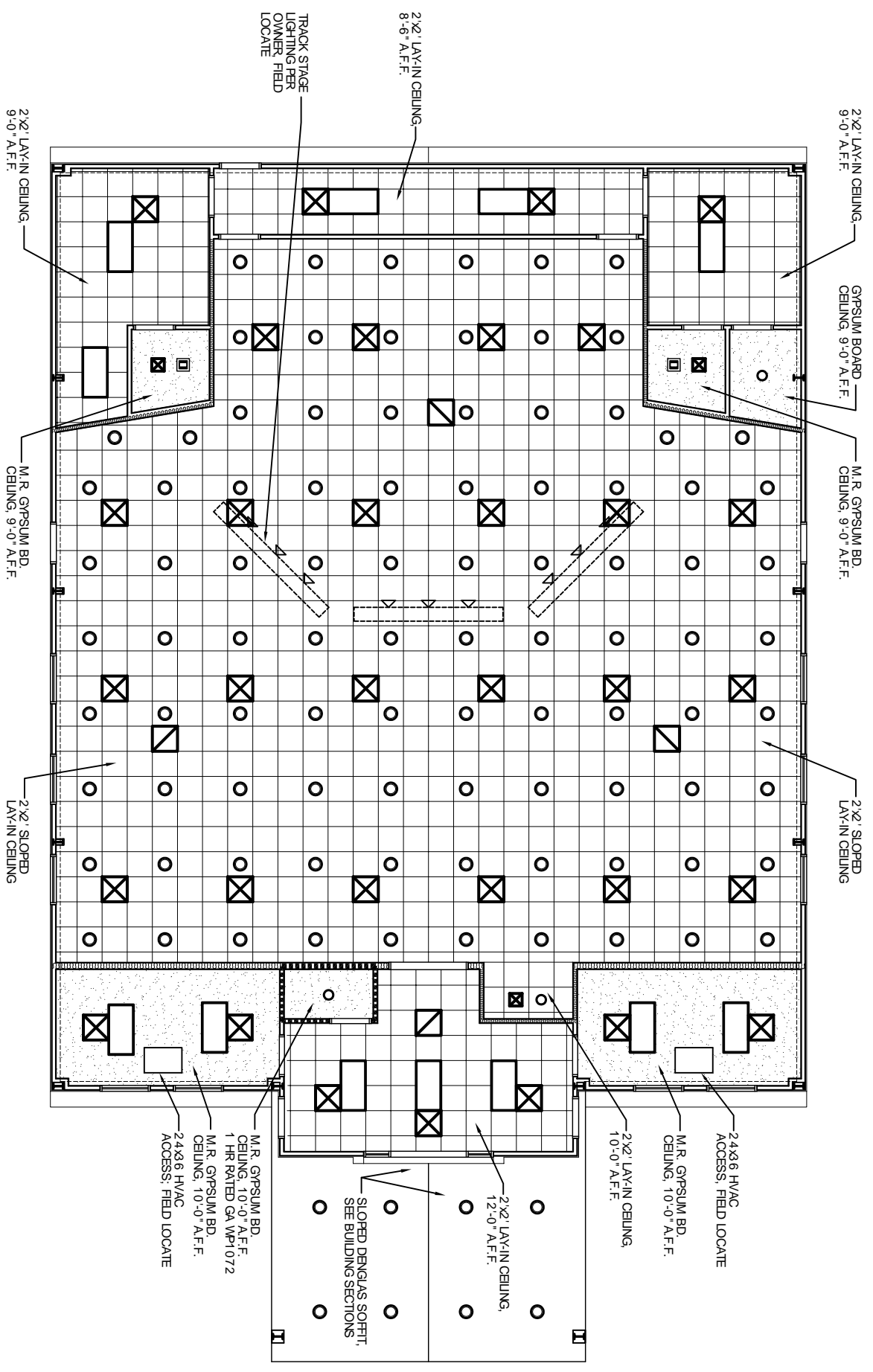
JOB#: 2050

DATE: 2-8-10

SHEET 17

A-6

OF 25



REFLECTED CEILING PLAN
SCALE: 3/16"=1'

