

DAMMON
ENGINEERING, INC.

CHIEF ENGINEER
EMMETT
DAMMON, P.E.

CHIEF ARCHITECT
ROBERT
WILTSE

1095 FLORIDA AVENUE
SUDELL, LA. 70458
OFFICE: 985-649-5832
FAX: 985-641-3950

WEBSITE:
WWW.DAMMONENGINEERING.COM
EMAIL:
DAMMONENGG@BLSOUTH.NET

ARCHITECTURE
ENGINEERING
STUDIES
PLANNING
INVESTIGATION
EXPERT WITNESS

NEW
CHURCH

TABERNACLE
BAPTIST CHURCH
2445 FOURTH ST.
SUDELL, LA

LANDSCAPING
PLAN

- LEGEND**
- - - - - PROPERTY LINE
 - - - - - BUILDING SETBACK
 - - - - - LANDSCAPING SETBACK MINIMUM
 - - - - - UTILITY / EASIMENT LINE
 - - - - - NEW BUILDING OUTLINE
 - HANDICAP PARKING
 - HANDICAP PARKING SIGN
 - TRASH RECEPTACLE

REV:

SCALE: AS NOTED

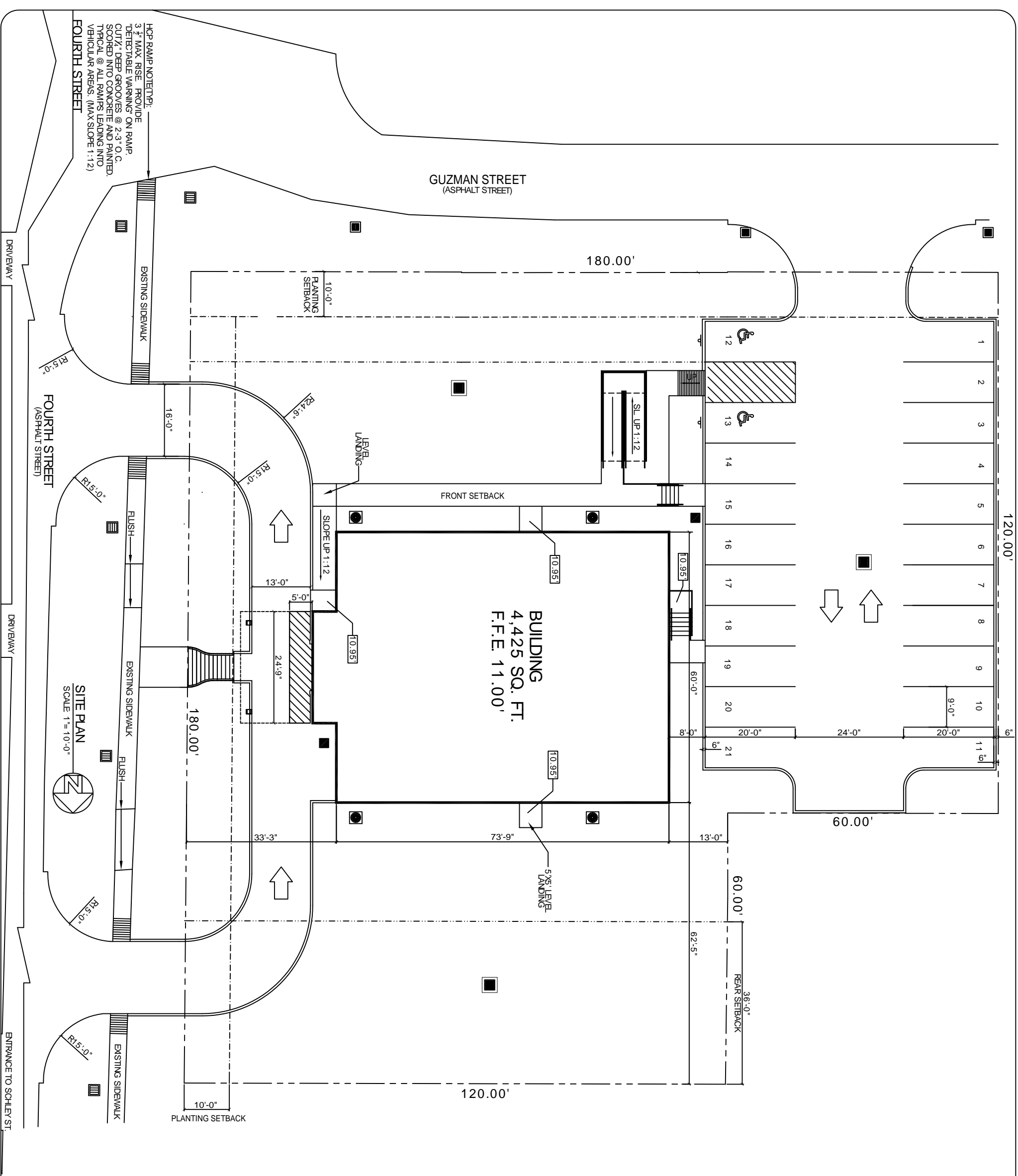
JOB#: 2050

DATE: 03-31-10

SHEET 1

L

OF 1



BUILDING
4,425 SQ. FT.
F.F.E. 11.00'

GUZMAN STREET
(ASPHALT STREET)

FOURTH STREET
(ASPHALT STREET)

DRIVEWAY

DRIVEWAY

ENTRANCE TO SCHLEY ST.

SITE PLAN
SCALE 1" = 10'-0"



OF 1