

DAMMON
ENGINEERING, INC.

CHIEF ENGINEER
EMMETT
DAMMON, P.E.
CHIEF ARCHITECT
ROBERT
WILTSE

1095 FLORIDA AVENUE
SLIDELL, LA, 70458
OFFICE: 985-649-5632
FAX: 985-641-5950

WEBSITE:
WWW.DAMMONENGINEERING.COM
EMAIL:
DAMMONENG@Bellsouth.net

ARCHITECTURE
ENGINEERING
STUDIES
PLANNING
INVESTIGATION
EXPERT WITNESSES

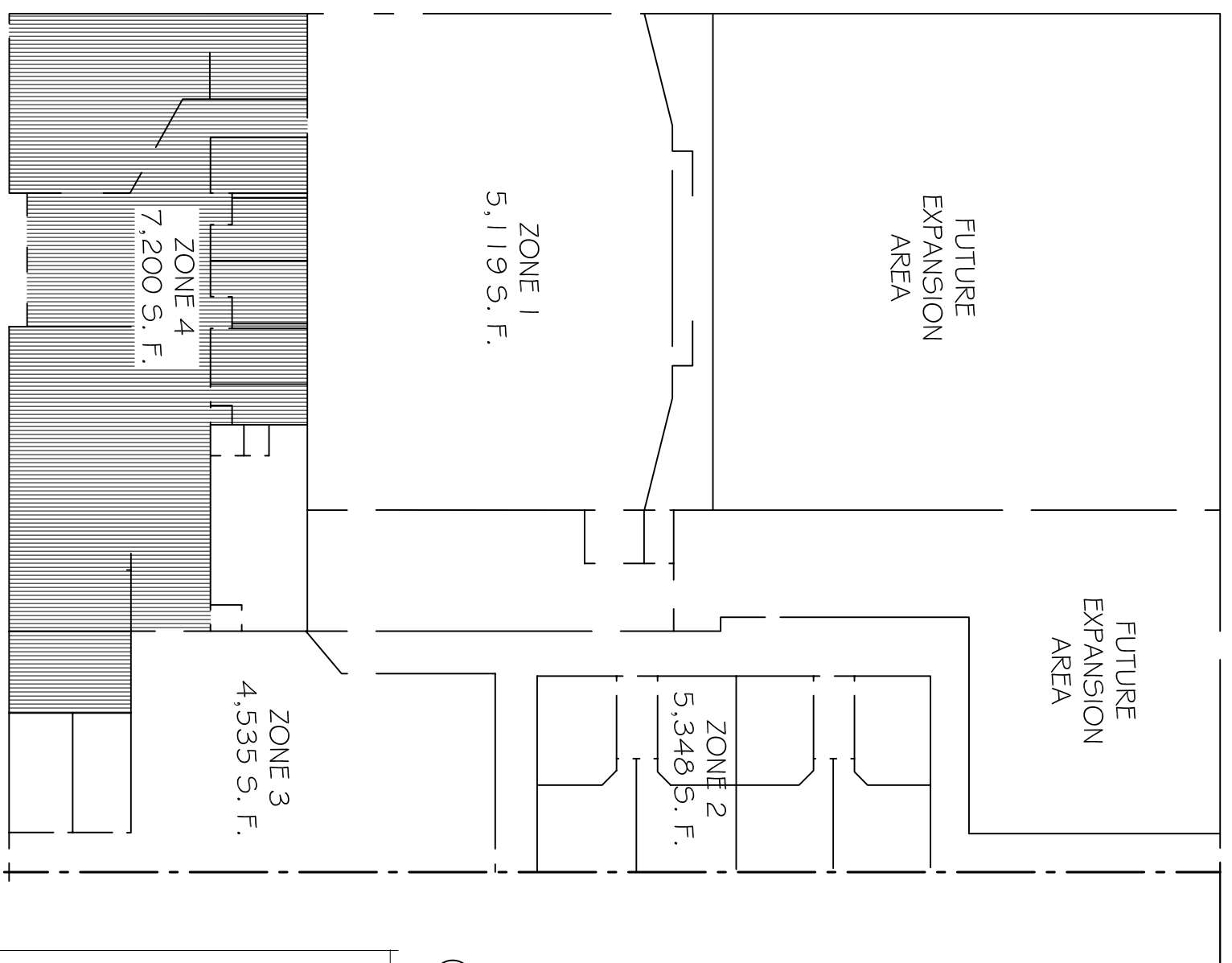
NORTHSHORE
CHURCH
KENSINGTON DR.
SLIDELL, LA

ZONE 4, OFFICES
REFLECTED CEILING
PLANS

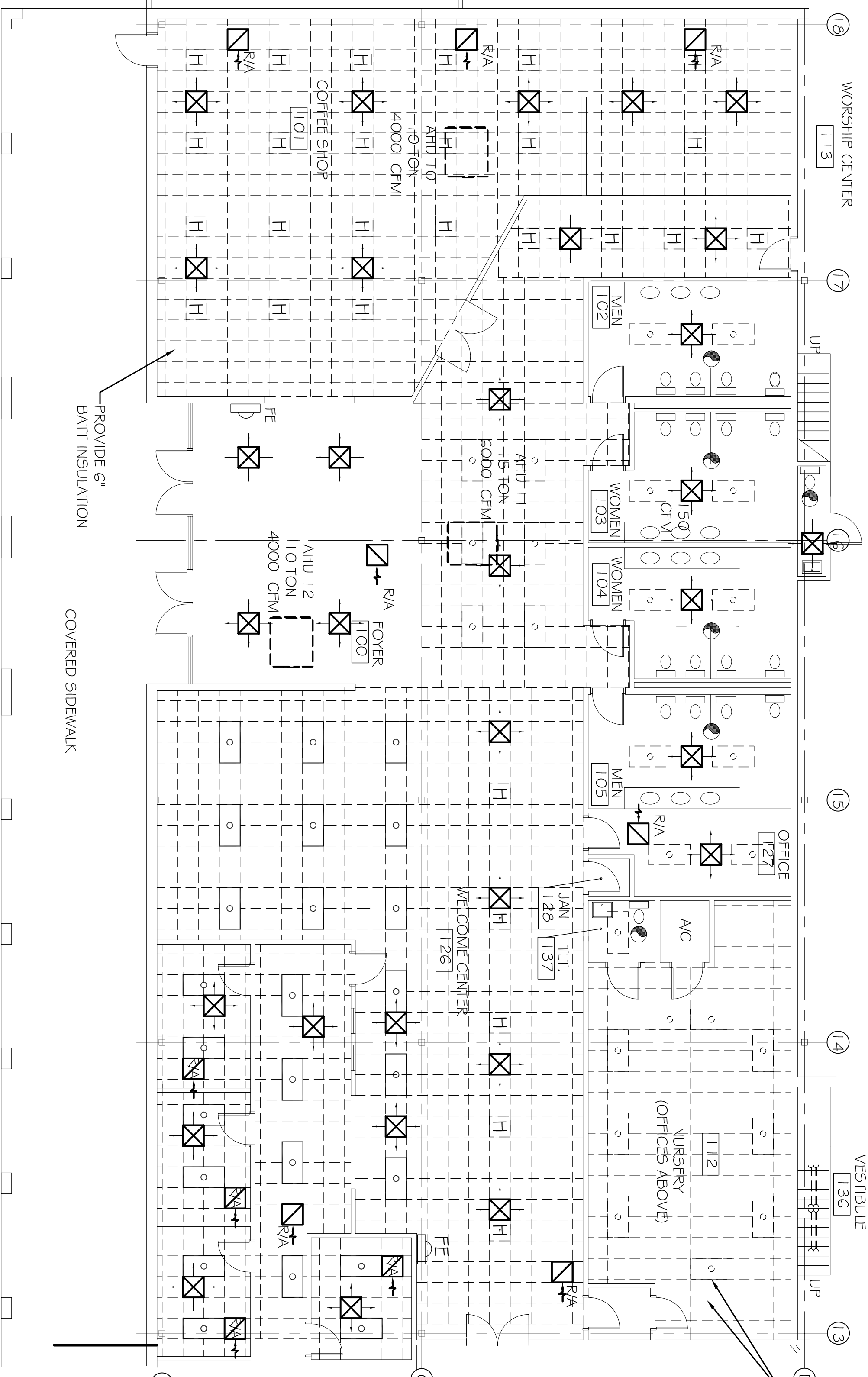
REV:03-23-09
SCALE: AS NOTED
JOB#: 1988
DATE: 09-30-08
SHEET

OF

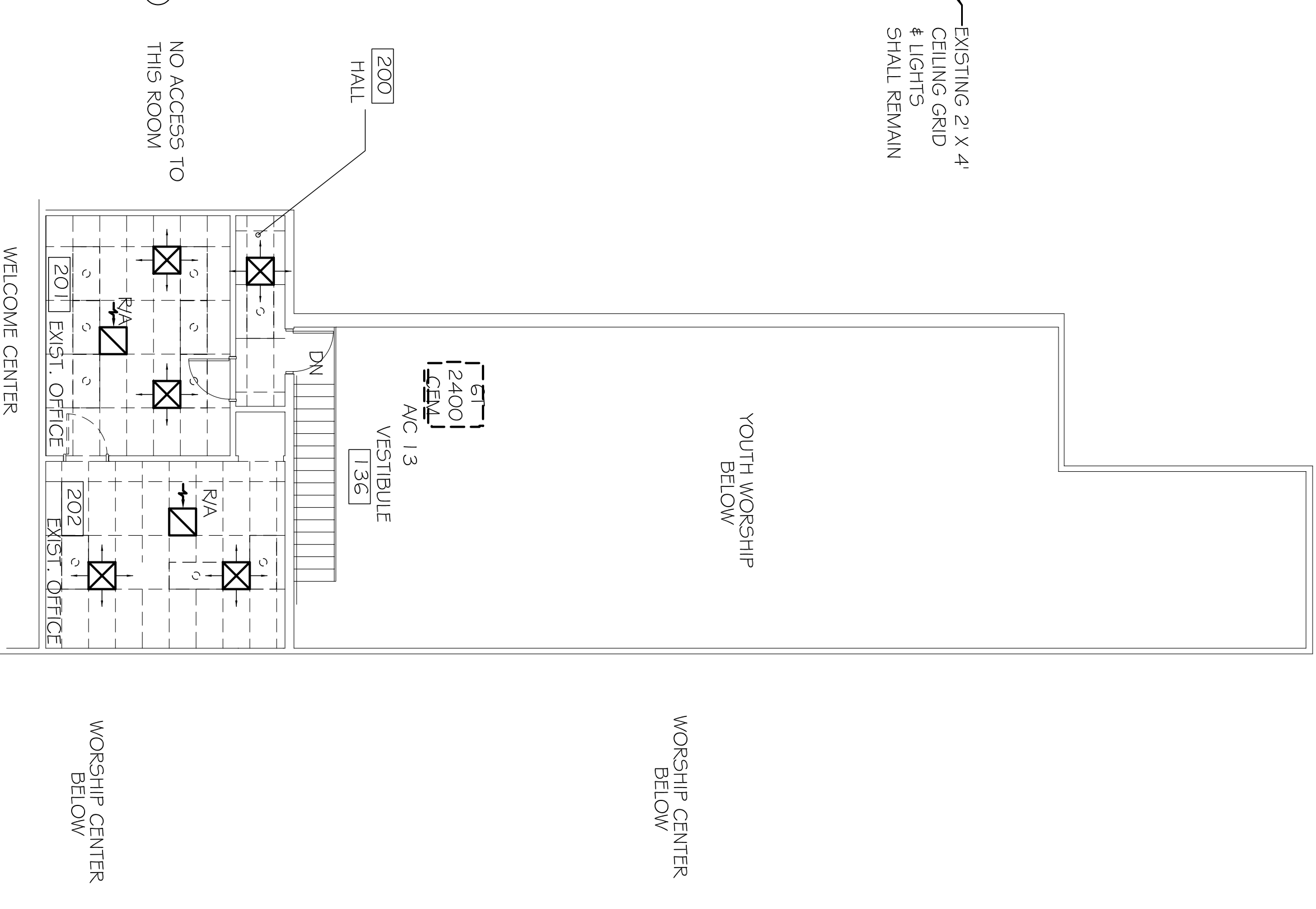
E-3



KEY PLAN
N.T.S.



ZONE 4 REFLECTED CEILING PLAN
SCALE: 1/8" = 1'-0"



MEZZANINE OFFICES
REFLECTED CEILING PLAN
SCALE: 1/8" = 1'-0"

LEGEND

- EXISTING 2 X 4 FLUORESCENT FIXTURE
- EXISTING 2 BULB FLUORESCENT FIXTURE
- EXISTING 2 X 4 FLUORESCENT FIXTURE
- EXISTING HPS FIXTURE
- EXISTING REFLECTED CEILING
- NEW REFLECTED CEILING
- 24" X 24" SUPPLY AIR DUCT
- 24" X 24" RETURN AIR DUCT
- 24" X 48" 4 BULB FLUORESCENT FIXTURE (N= NIGHT LIGHT- ALWAYS ON)
- CEILING MOUNTED FIXTURE
- TRACK LIGHTING
- EXTERIOR WALL SCONCE FIXTURE W/ 50 MIN. BATTERY BACKUP
- FIRE EXTINGUISHER & CABINET- 10 LB. MULTI-USE