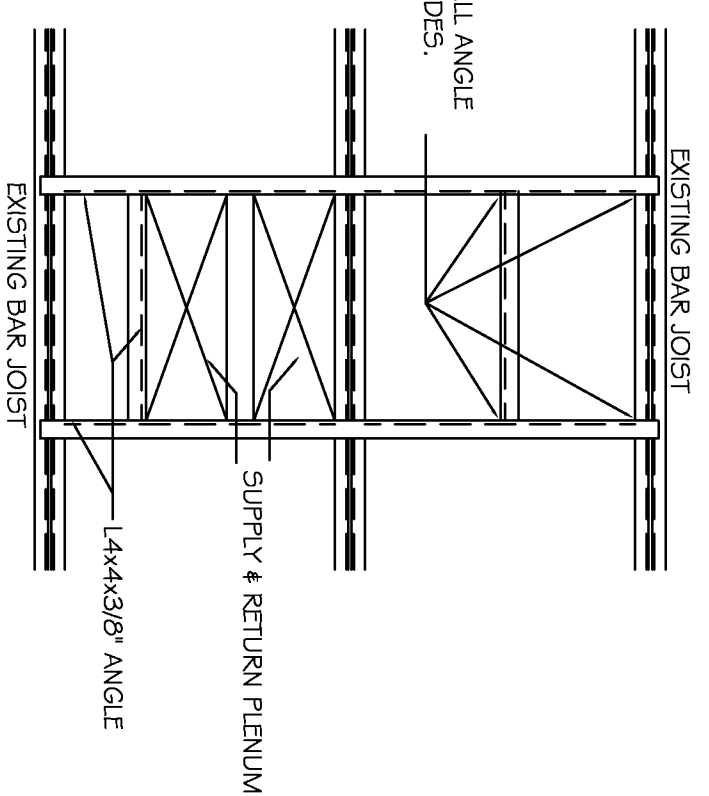


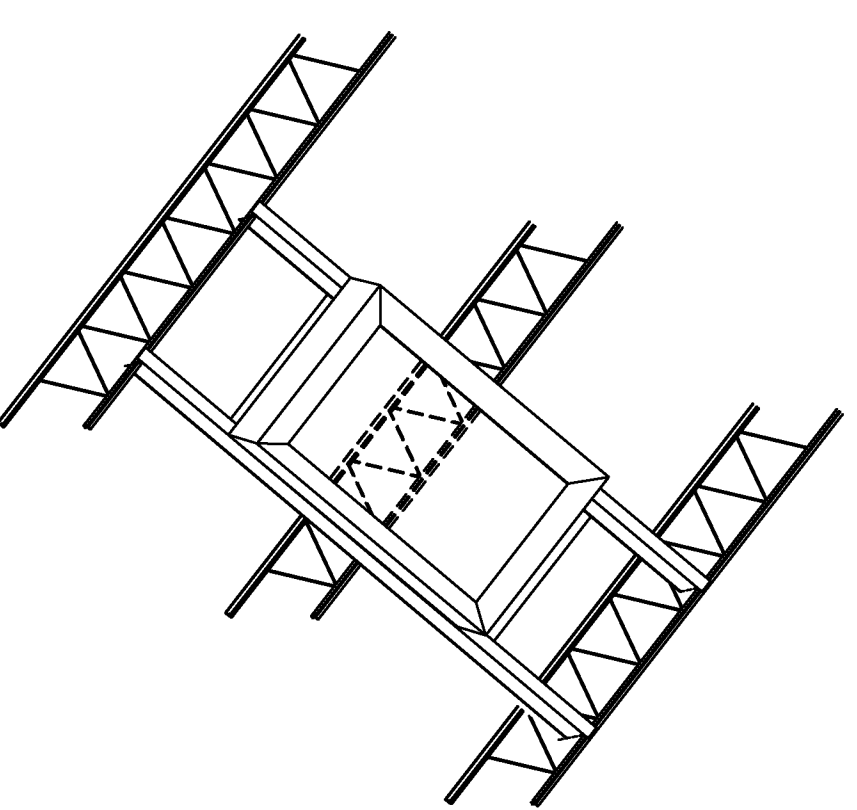
### MECHANICAL KEY PLAN



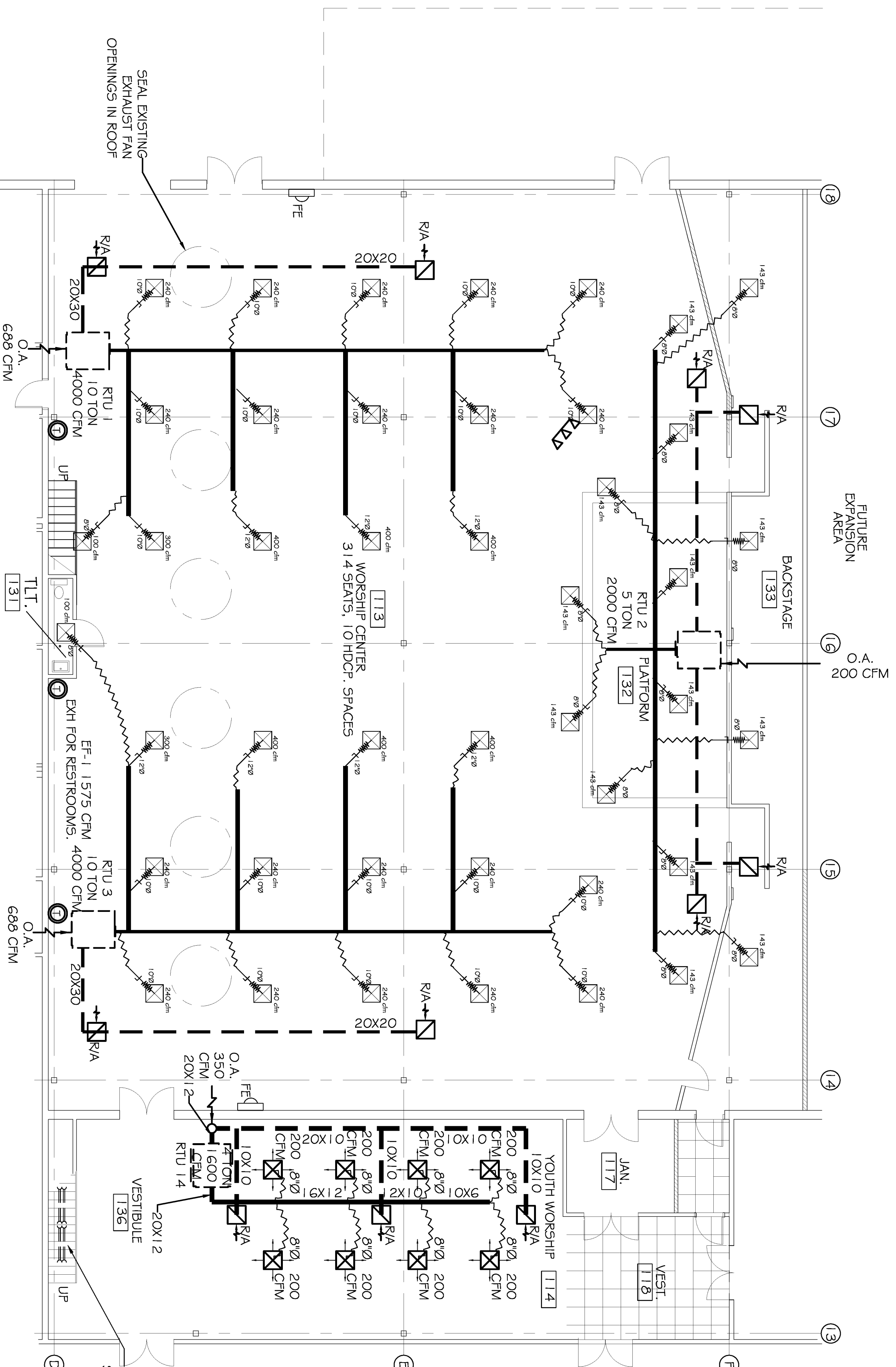
N.T.S.



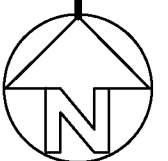
TYPICAL RTU SUPPORT DETAIL



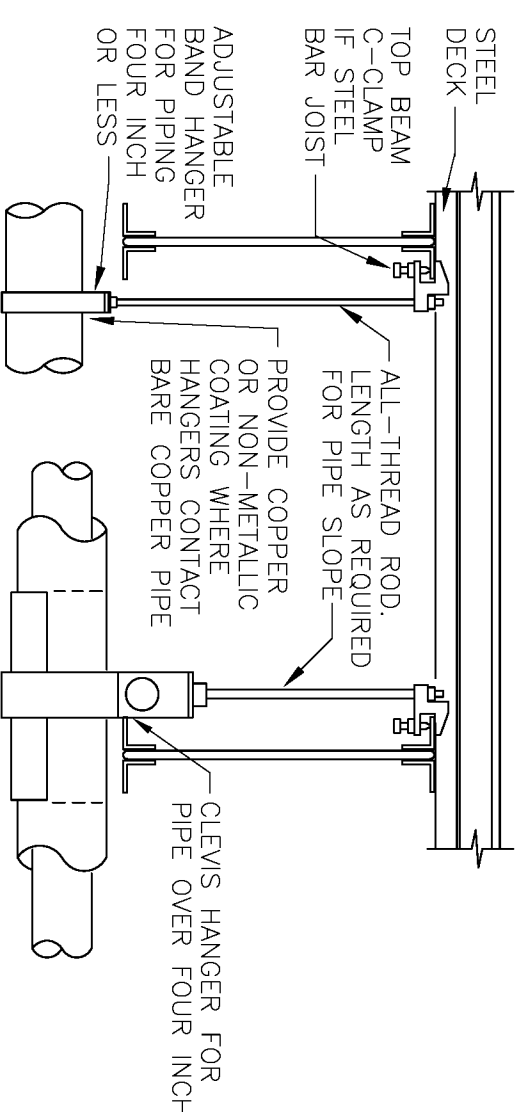
TYPICAL RTU CURB ISO VIEW



### ZONE 1 MECHANICAL PLAN

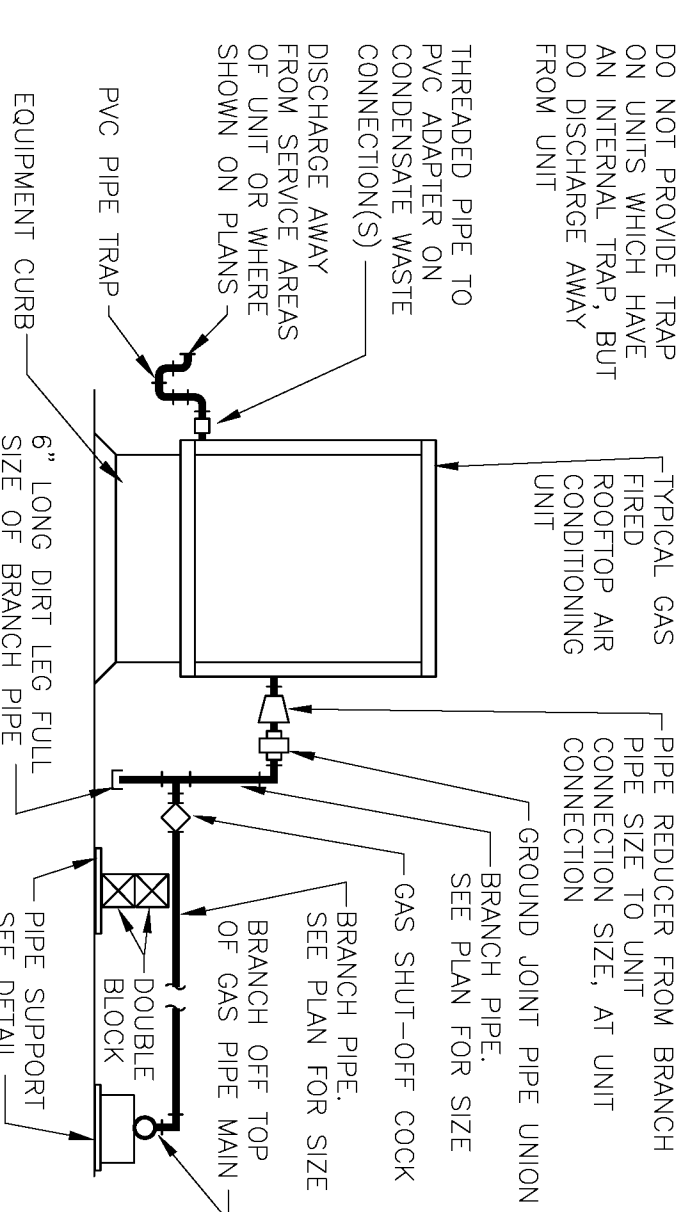


SCALE: 1/8"=1'-0"



DO NOT HANG PIPE LARGER THAN 3" FROM BOTTOM OF JOISTS. PROVIDE GALVANIZED STEEL SADDLE FOR ALL INSULATED PIPE LARGER THAN 3/4". VERIFY INSULATION THICKNESS WHEN SIZING HANGERS.

PROVIDE UPPER ATTACHMENT AS REQUIRED FOR CASES NOT SHOWN HERE. DO NOT INSTALL HANGER INSIDE INSULATION OR OTHERWISE PENETRATE VAPOUR BARRIER. DO NOT HANG ONE PIPE FROM ANOTHER EXCEPT IN HANGER SPACES. USE HANGERS FOR ALL PIPE. MAXIMUM HANGER SPACING FOR PIPE SIZES: COPPER: 1/2"=5', 3/4"=6', 1"=7', 1 1/2"=8', 2"=9', 2 1/2"=10', 3"=11', 4"=12', 6"=14', 8"=16', 10"=18', 12"=21', 14"=24', 16"=27', 18"=30', 20"=33', 24"=39', 30"=47', 36"=56', 42"=65', 48"=76', 54"=87', 60"=100'. AND ONE NEAR ALL JOISTS. STEEL: 4"=14', 3"=12', 2 1/2"=11', 2"=10', 1 1/2"=8', 1"=7', 3/4"=6', 1/2"=5', CAST IRON: 10"=30', 12"=36', 14"=42', 16"=48', 18"=54', 20"=60', 24"=72', 30"=84', 36"=96', 42"=108', 48"=120', 54"=135', 60"=150'. POSSIBLE TO TURN AND SET 2" LOCAL HANGERS AS CLOSE TO STEEL STRUTS BETWEEN JOISTS IF REQUIRED. LOCATE HANGERS TO TAKE LOAD OFF OF EQUIPMENT CONNECTIONS. ANCHOR WATER PIPE AGAINST SWAYING DUE TO CHANGES IN WATER VELOCITY. PROVIDE SEISMIC BRACING 1/2" AS MINIMUM FOR WATER PIPING. VERIFY ALL HANGERS AND STRUTS ARE CAST IRON OR STEEL IS NOT ACCEPTABLE. REFER TO CODES FOR FURTHER INFORMATION.



TYPICAL ROOFTOP UNIT DETAIL

NOT TO SCALE

### LEGEND

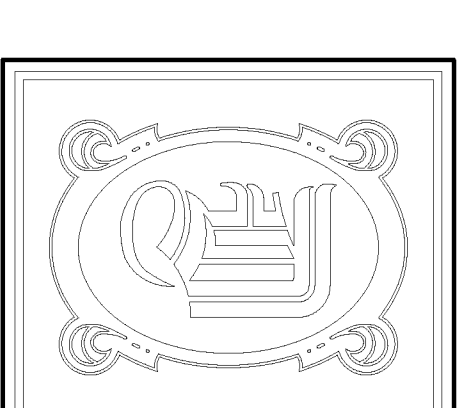
- SUPPLY AIR DUCT
- RETURN AIR DUCT
- - - EXHAUST DUCT
- ⊠ 24 X 24 SUPPLY AIR GRILLE
- ⊠ 24 X 24 RETURN AIR GRILLE
- ⊙ THERMOSTAT
- ⊙ VENT

### Rooftop Unit Connections

Scale: Not To Scale

### Pipe Hangers

Scale: Not To Scale



**DAMMON**  
ENGINEERING, INC.

CHIEF ENGINEER  
EMMETT  
DAMMON, P.E.  
CHIEF ARCHITECT  
ROBERT  
WILTSE

1095 FLORIDA AVENUE  
SUITE LL, LA, 70458  
OFFICE: 985-649-5632  
FAX: 985-641-5950

WEBSITE:  
WWW.DAMMONENGINEERING.COM  
EMAIL:  
DAMMONEN@BELL.SOUTH.NET

ARCHITECTURE  
ENGINEERING  
STUDIES  
PLANNING  
INVESTIGATION  
EXPERT WITNESS

NORTHSHORE  
CHURCH  
KENSINGTON DR.  
SLIDELL, LA

ZONE 1  
MECHANICAL  
PLAN

REV: #1 06-08-09

SCALE: AS NOTED

JOB#: 1988

DATE: 09-30-08

SHEET

M-1

OF