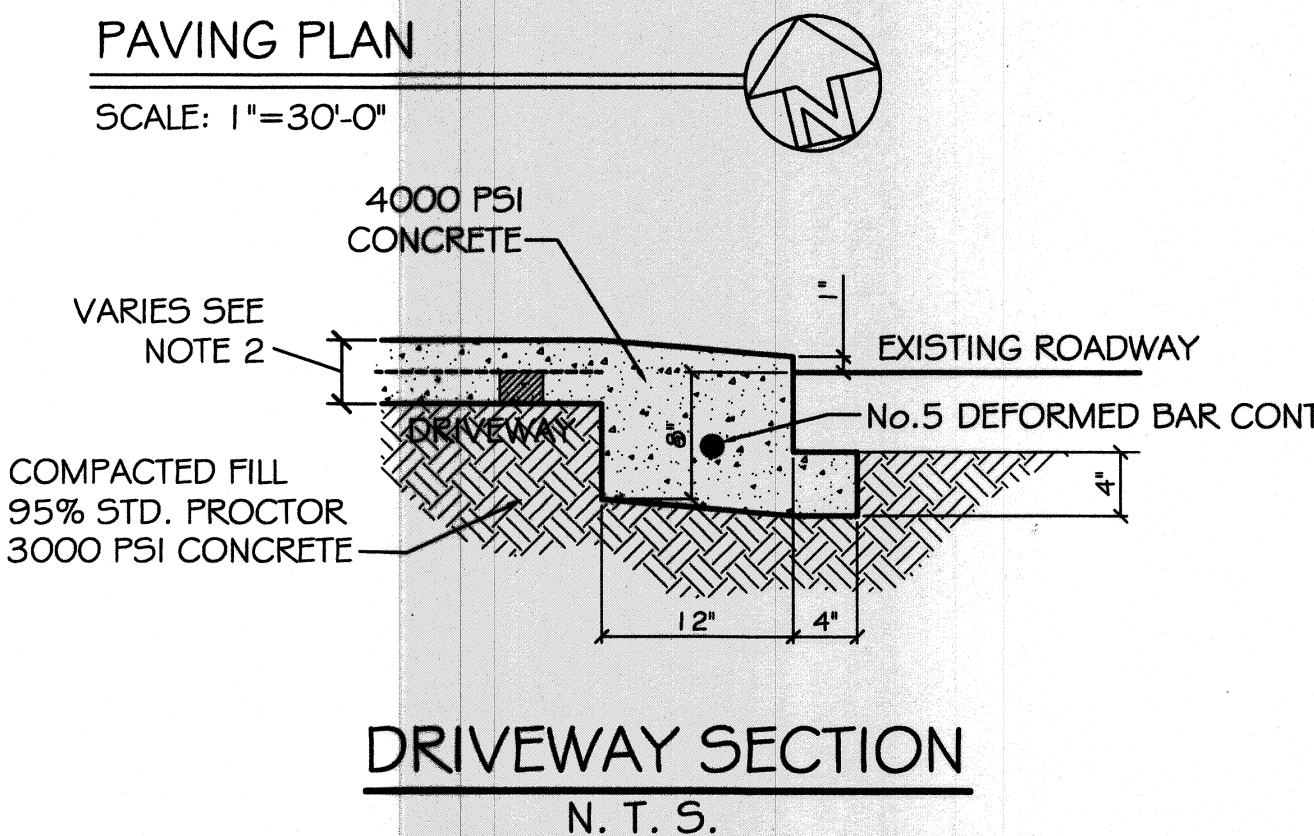
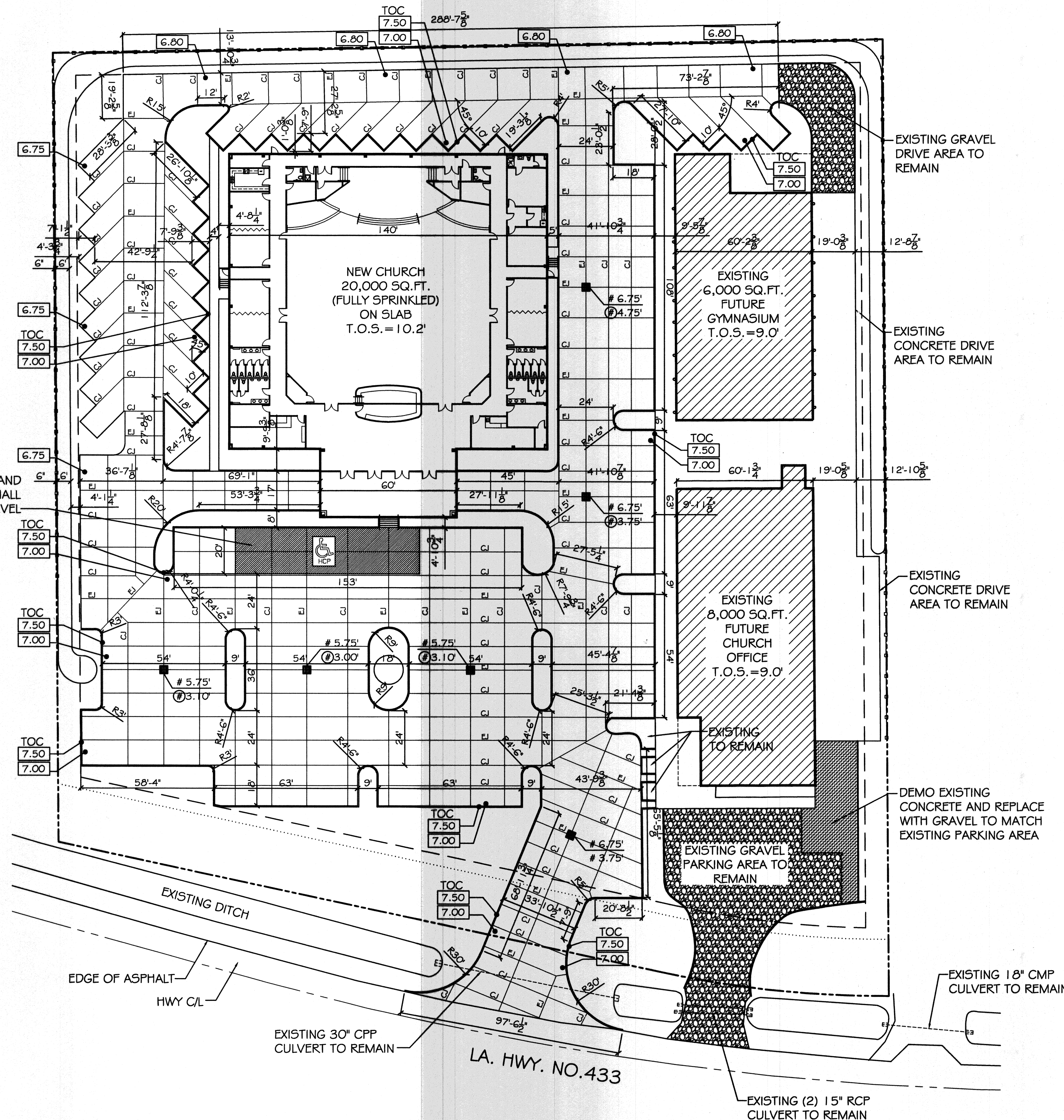
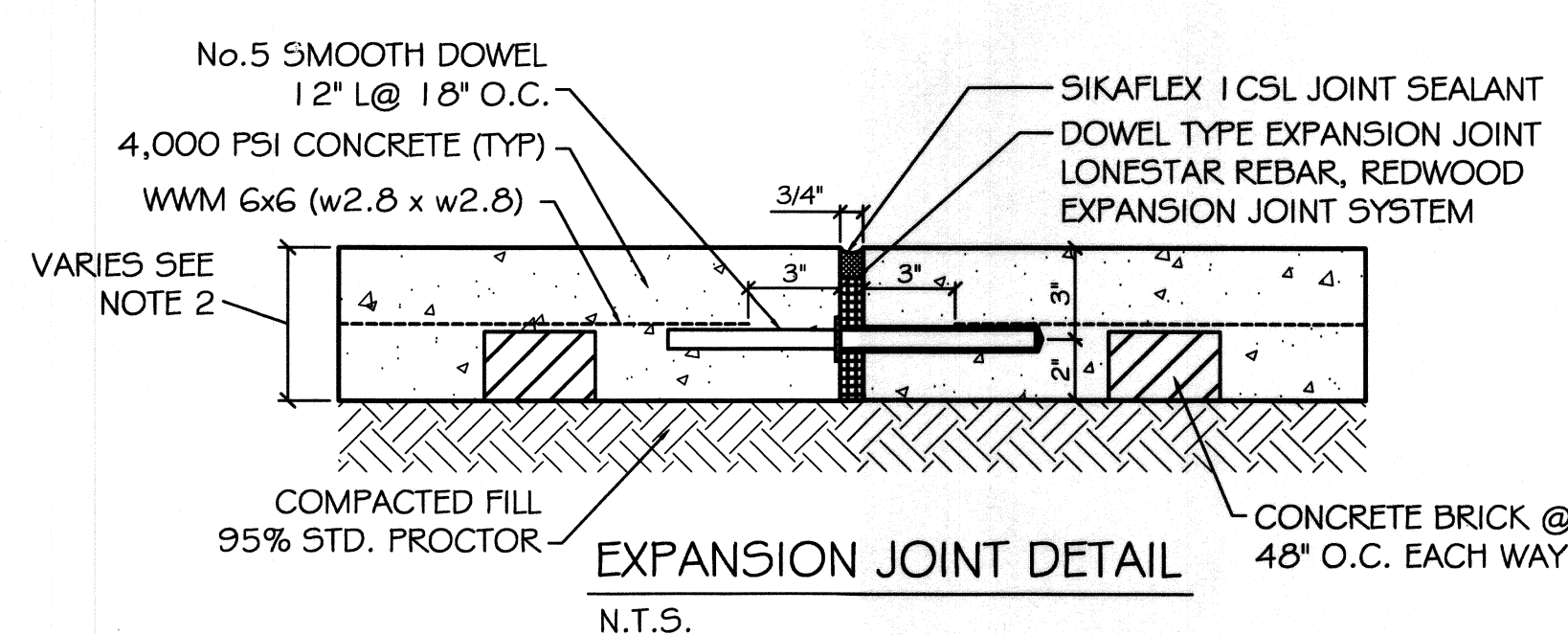
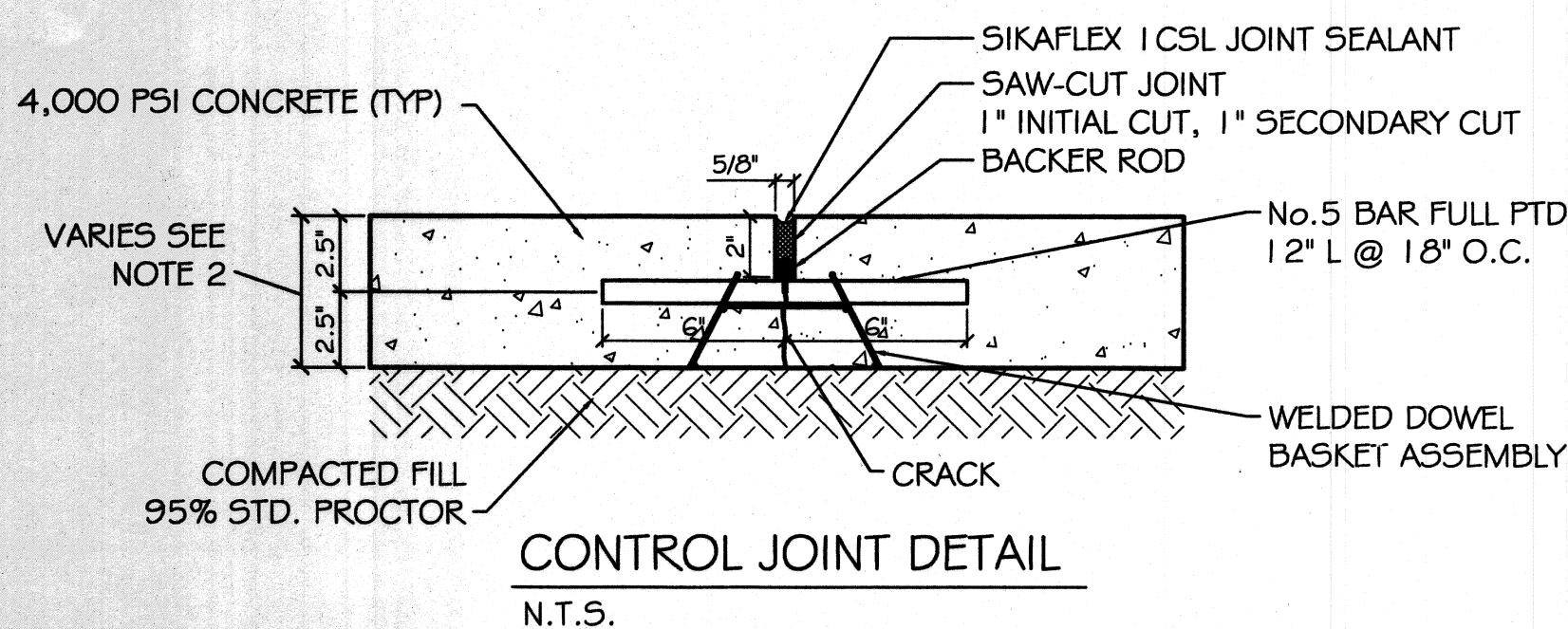
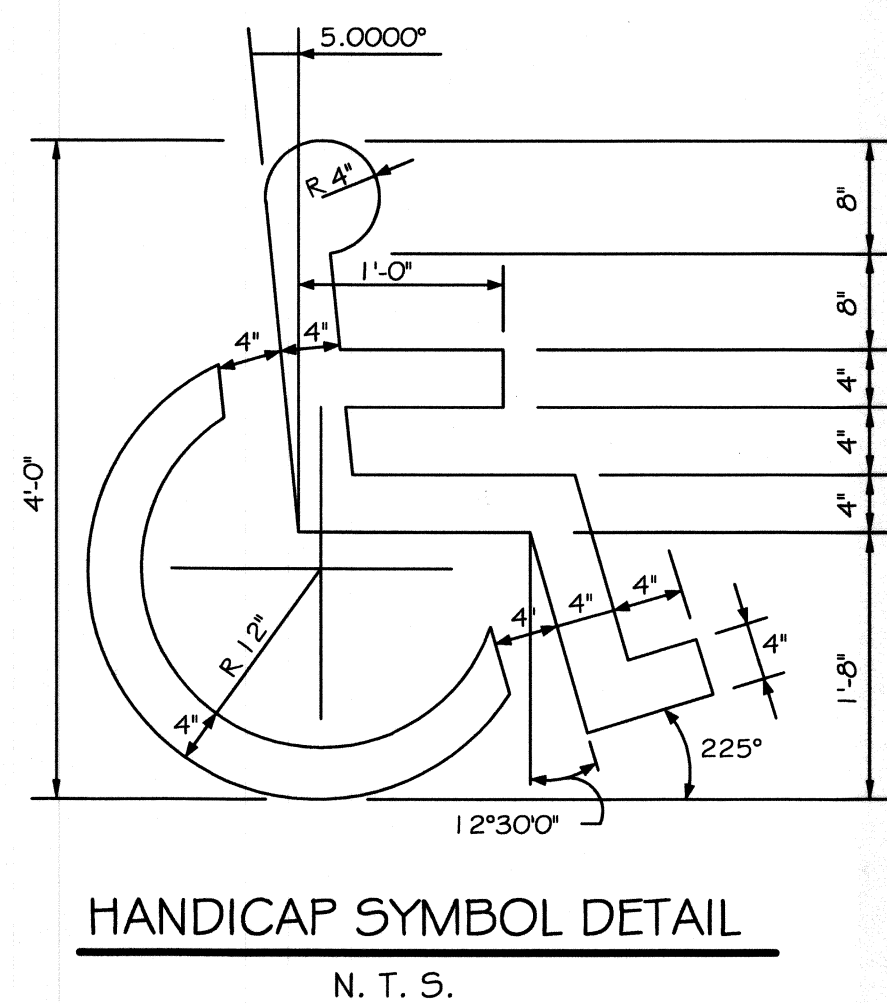
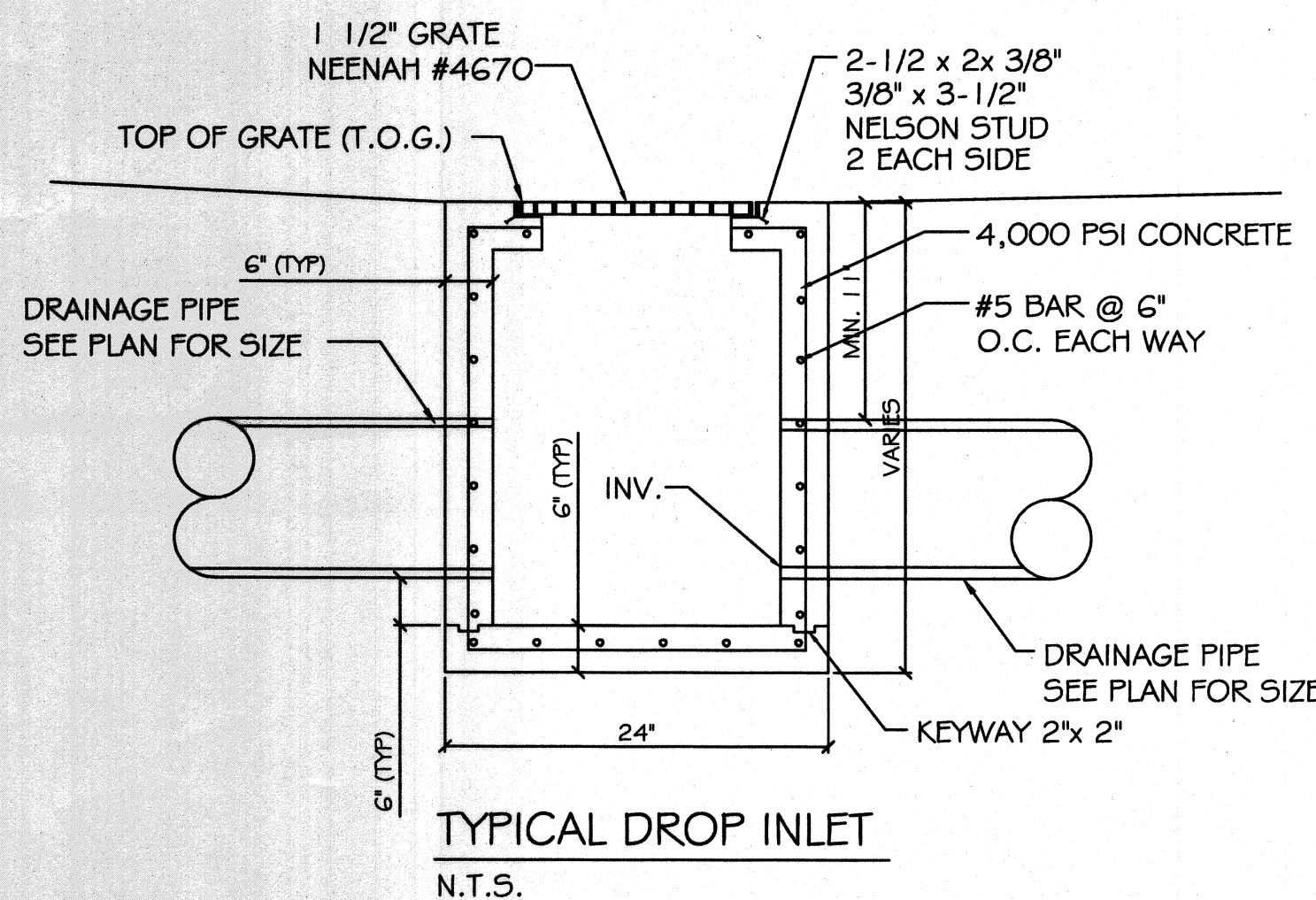
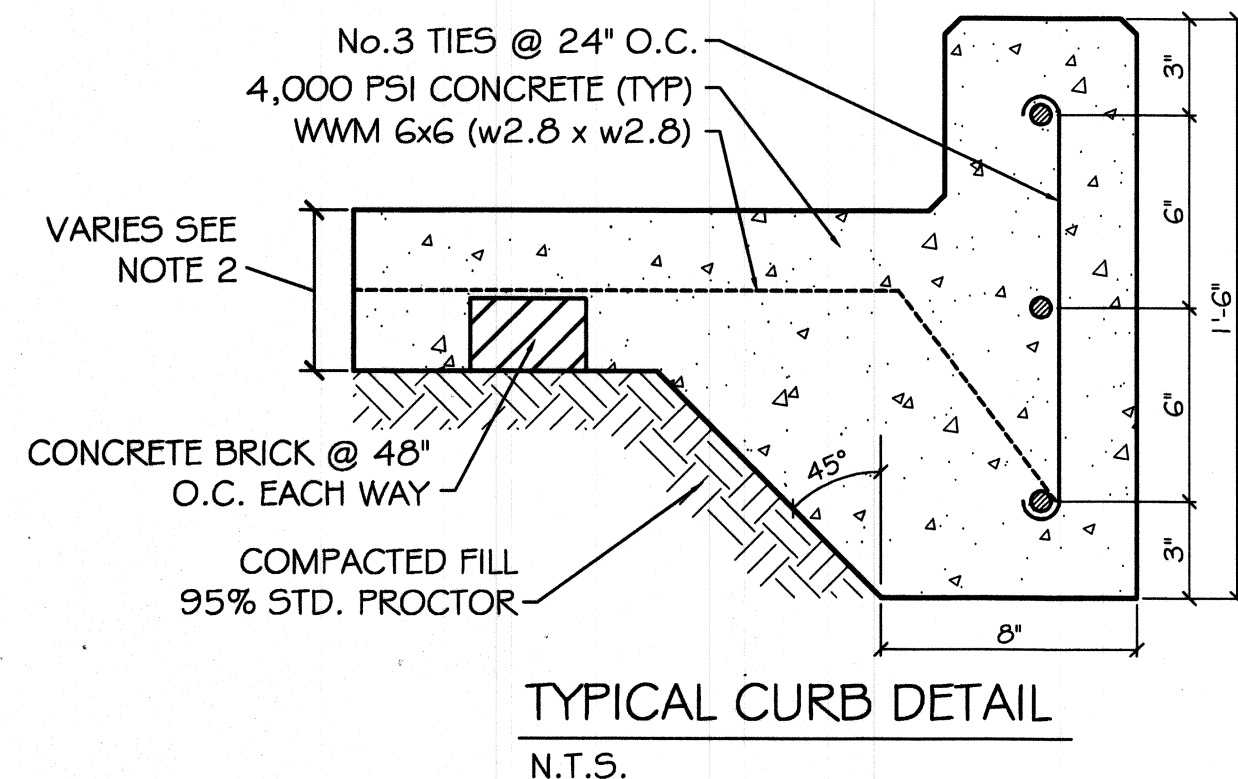
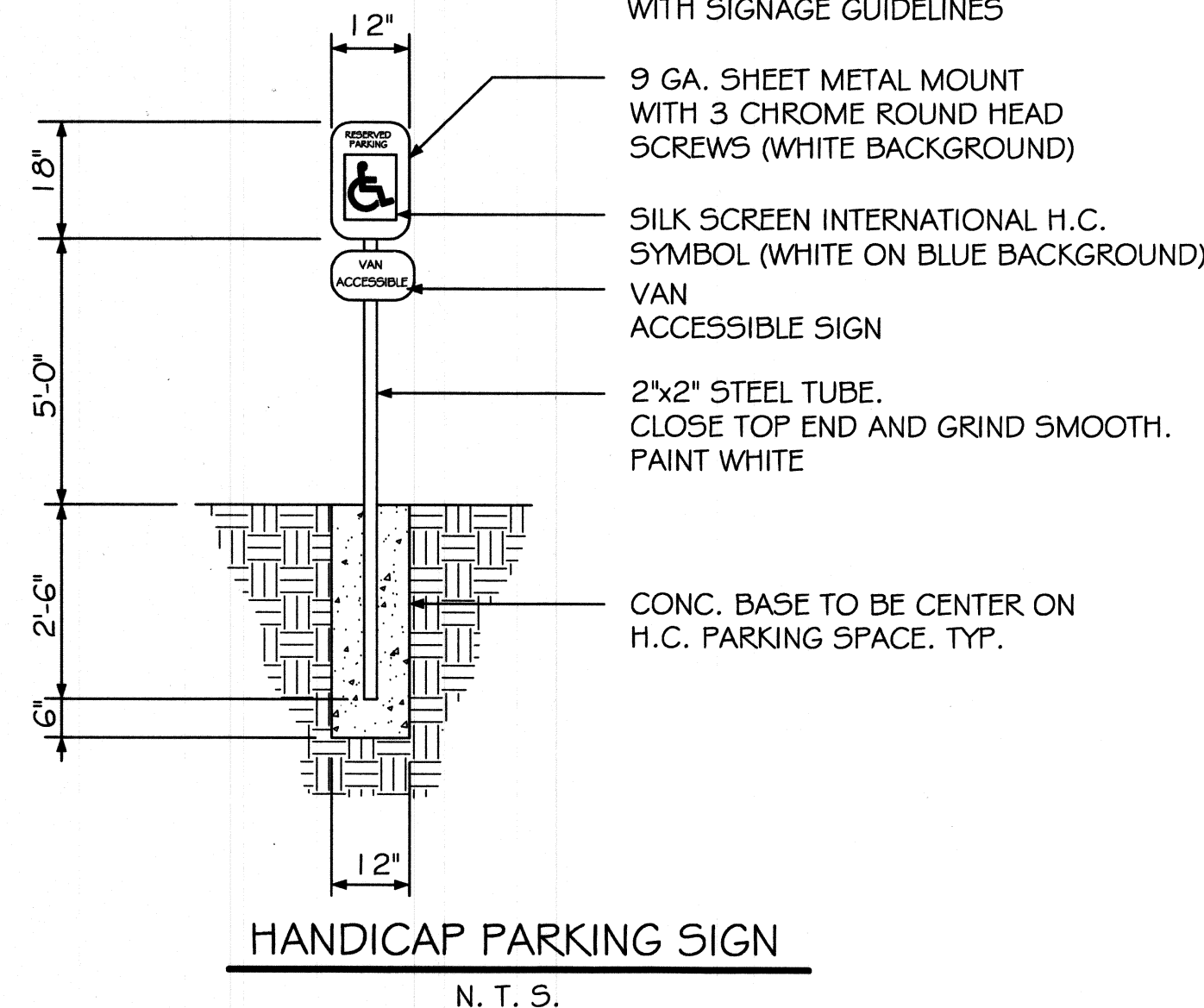


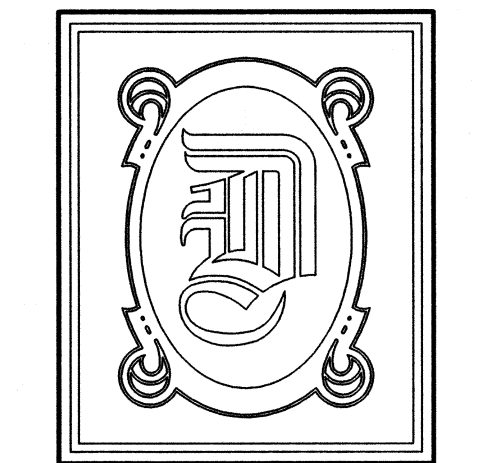
PAVING NOTES:

- 1) ALL NEW CONCRETE SHALL HAVE A MINIMUM COMPRESSIVE STRENGTH OF 4,000 PSI AT 28 DAYS AND A MINIMUM THICKNESS OF 5". CONCRETE MIX SHALL BE IN ACCORDANCE WITH THE LATEST REVISION OF ASTM C-150 TYPE 1.
- 2) CONCRETE PAVING THICKNESS SHALL VARY AS FOLLOWS:
 - a) APRONS = 7" THICKNESS
 - b) DRIVELANES = 6" THICKNESS
 - c) PARKING AREAS = 5" THICKNESS
- 3) ALL REINFORCING STEEL SHALL MEET ASTM-A615 (GRADE 60).
- 4) ALL REINFORCING STEEL SHALL BE SECURELY SUPPORTED TO PREVENT BOTH VERTICAL AND HORIZONTAL MOVEMENT DURING CONCRETE PLACEMENT. ALL CONTROL AND EXPANSION JOINTS SHALL BE LOCATED AND INSTALLED AS SHOWN ON THE PAVING PLAN AND IN ACCORDANCE WITH THE MANUFACTURER'S RECOMMENDATIONS.
- 5) ALL SUB GRADE FILL SHALL BE SELECT GRANULAR MATERIAL COMPACTED TO 95% STANDARD PROCTOR DENSITY IN A MAXIMUM OF 6" LIFTS.
- 6) CONTRACTOR SHALL CONTACT THEIR REGULATORY DEPARTMENT OF ENGINEERING PRIOR TO CONDUCTING ANY WORK.
- 7) ANY WORK WITHIN THE ROADWAY OR ADJACENT TO THE ROADWAY CAUSING AN INTERFERENCE TO VEHICULAR TRAFFIC REQUIRES PRIOR APPROVAL FROM THE CITY TRAFFIC ENGINEERING DIVISION, AND MUST CONFORM TO THE REQUIREMENTS SET FORTH BY THE UNIFORM MANUAL OF TRAFFIC CONTROL DEVICES OF THE STATE OF LOUISIANA. THE CONTRACTOR MUST FURNISH ALL NECESSARY TRAFFIC SIGNS AND/OR BARRICADES AND MAINTAIN THEM DURING CONSTRUCTION ACTIVITY.

NOTE:
SIGNAGE SHALL COMPLY
WITH SIGNAGE GUIDELINES



- LEGEND**
- - - - - PROPERTY LINE
 - - - - - SETBACK LINE
 - - - - - BUFFER ZONE LINE
 - - - - - UTIL. EASEMENT LINE
 - - - - - CONTROL JT. 10x15'
 - - - - - EXPANSION JT. 30x45'
 - - - - - SHEET FLOW ARROW
 - ①0.00' - INVERT ELEVATION
 - # 0.00' - TOP OF GRATE ELEVATION
 - 00.00' - NEW ELEVATION



DAMMON ENGINEERING, INC.

CHIEF ENGINEER
EMMETT DAMMON, P.E.

CHIEF ARCHITECT
ROBERT WILTSE

554 OLD SPANISH TRAIL
SLIDELL, LA. 70458
OFFICE: 985-649-5832
FAX: 985-641-5950

WEBSITE:
WWW.DAMMONENGINEERING.COM

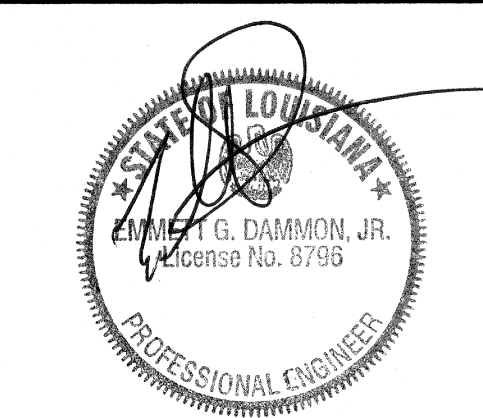
EMAIL:
DAMMONENG@BELLSOUTH.NET

- ARCHITECTURE
- ENGINEERING
- STUDIES
- PLANNING
- INVESTIGATION
- EXPERT WITNESS

LIVING THE WORD INTERNATIONAL

2528 OLD SPANISH TRAIL
SLIDELL, LA 70461

PAVING PLAN



REV:

SCALE: AS NOTED

JOB#: 2128

DATE: 01-27-12

SHEET 5

C-4