

DAMMON
ENGINEERING, INC.

CHIEF ENGINEER
EMMETT
DAMMON, P.E.

CHIEF ARCHITECT
ROBERT
WILTSE

554 OLD SPANISH TRAIL
SLIDELL, LA. 70458
OFFICE: 985-649-5832
FAX: 985-641-5950

WEBSITE:
WWW.DAMMONENGINEERING.COM

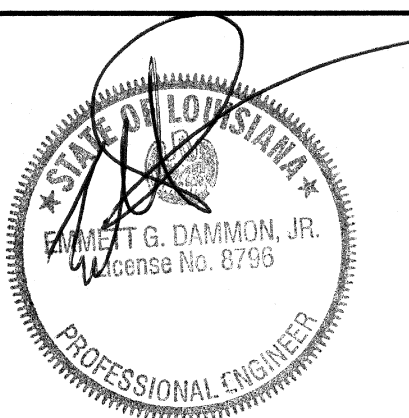
EMAIL:
DAMMONENG@BELLSOUTH.NET

ARCHITECTURE
ENGINEERING
STUDIES
PLANNING
INVESTIGATION
EXPERT WITNESS

LIVING THE WORD
INTERNATIONAL

2528
OLD SPANISH TRAIL
SLIDELL, LA
70461

UTILITY
PLAN



REV:

SCALE: AS NOTED

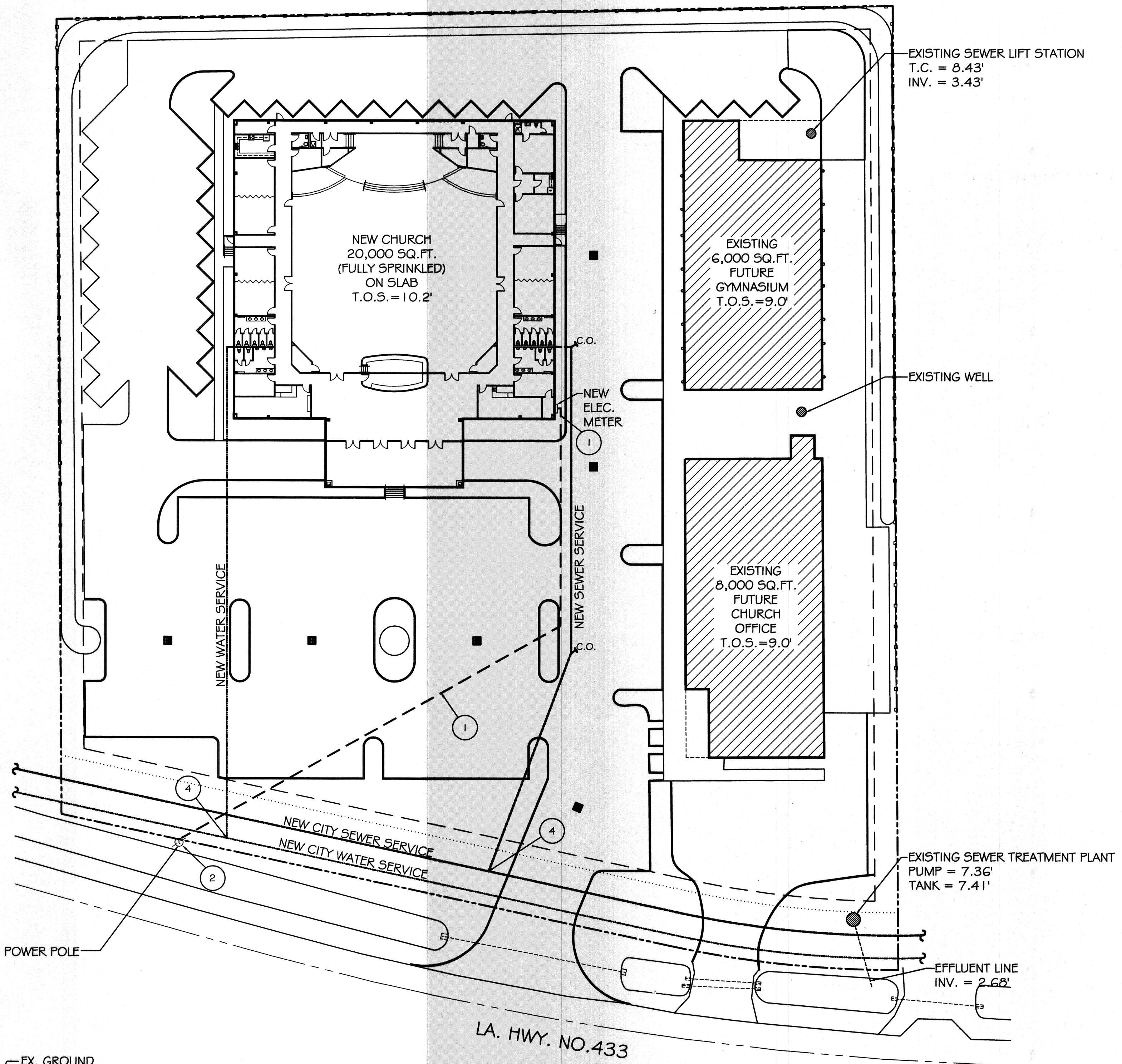
JOB#: 2128

DATE: 01-27-12

SHEET 7

C-6

OF 21



UTILITY PLAN

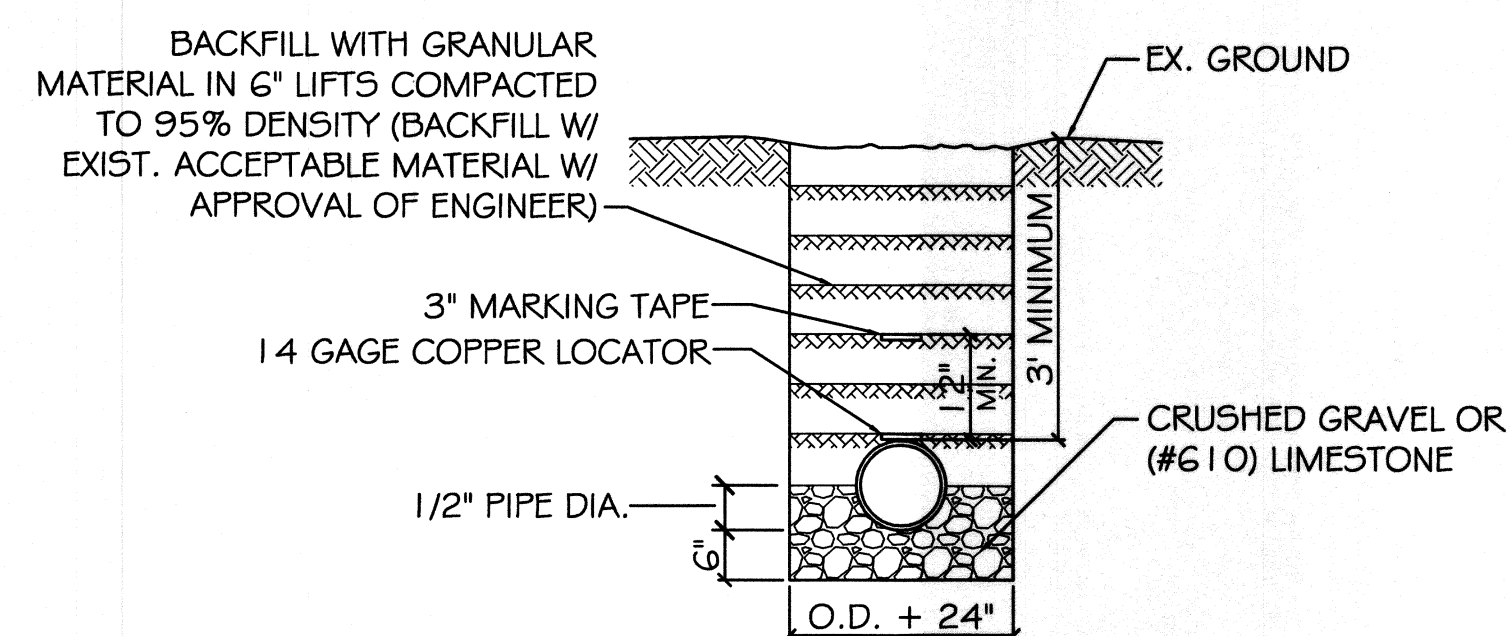
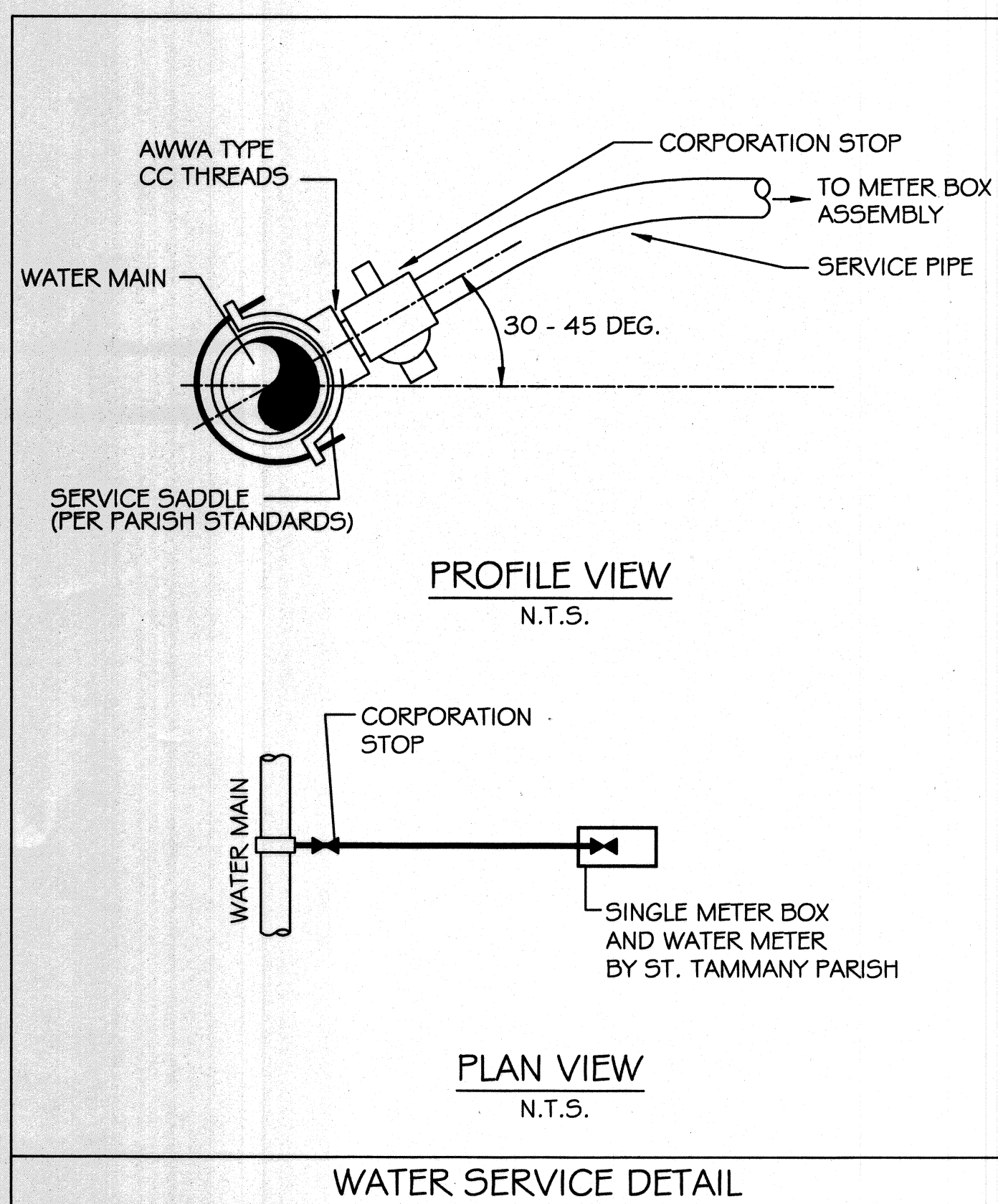
SCALE: 1"=30'-0"

UTILITY LEGEND

- - - - - PROPERTY LINE
- - - - - SETBACK LINE
- - - - - UTIL. EASEMENT LINE
- - - - - SEWER LINE
- - - - - WATER LINE
- - - - - U.G. ELEC. CONDUIT

UTILITY NOTES: #

1. 5CH. 80 PVC CONDUIT WHERE PIPE IS EXPOSED OUTSIDE OF BUILDING WALL. TRANSITION BACK TO SCH. 40 PVC @ 90° PVC ELBOW BELOW GRADE. ALL 90° FITTINGS TO BE 36" LONG SWEEP TYPE.
2. 120/208V 3Ø 800A SERVICE FROM UTIL. CO., FEEDER BY UTIL. CO. FIELD LOCATE TRANSFORMER AND COORDINATE WITH ELEC. COMPANY REGARDING ELECTRICAL SERVICE CONNECTION.
3. TIE NEW WATER SERVICE INTO NEW CITY WATER MAIN ON HWY. 433. PROVIDE METER AND BACKFLOW PREVENTER.
4. TIE NEW SEWER SERVICE INTO NEW CITY SEWER MAIN ON HWY. 433.



NOTE: A MINIMUM 10" HORZ. AND 18" VERT. SEPARATION IS REQUIRED BETWEEN WATER AND SEWER LINES.

PIPE BEDDING DETAIL FOR SEWER AND WATER
SCALE: N.T.S.