

**DAMMON**  
ENGINEERING, INC.

CHIEF ENGINEER  
EMMETT  
DAMMON, P.E.

CHIEF ARCHITECT  
ROBERT  
WILTSE

554 OLD SPANISH TRAIL  
SLIDELL, LA. 70458  
OFFICE: 985-649-5832  
FAX: 985-641-5950

WEBSITE:  
WWW.DAMMONENGINEERING.COM

EMAIL:  
DAMMONENG@BELLSOUTH.NET

ARCHITECTURE

ENGINEERING

STUDIES

PLANNING

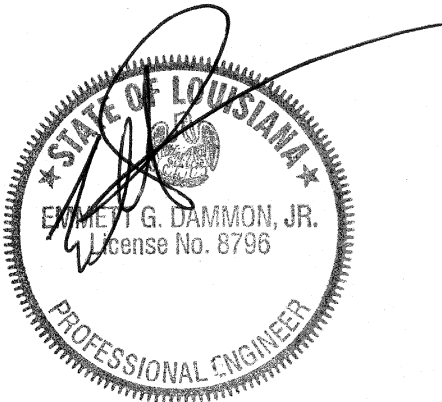
INVESTIGATION

EXPERT WITNESS

LIVING THE WORD  
INTERNATIONAL

2528  
OLD SPANISH TRAIL  
SLIDELL, LA  
70461

BUILDING  
SECTION



REV:

SCALE: AS NOTED

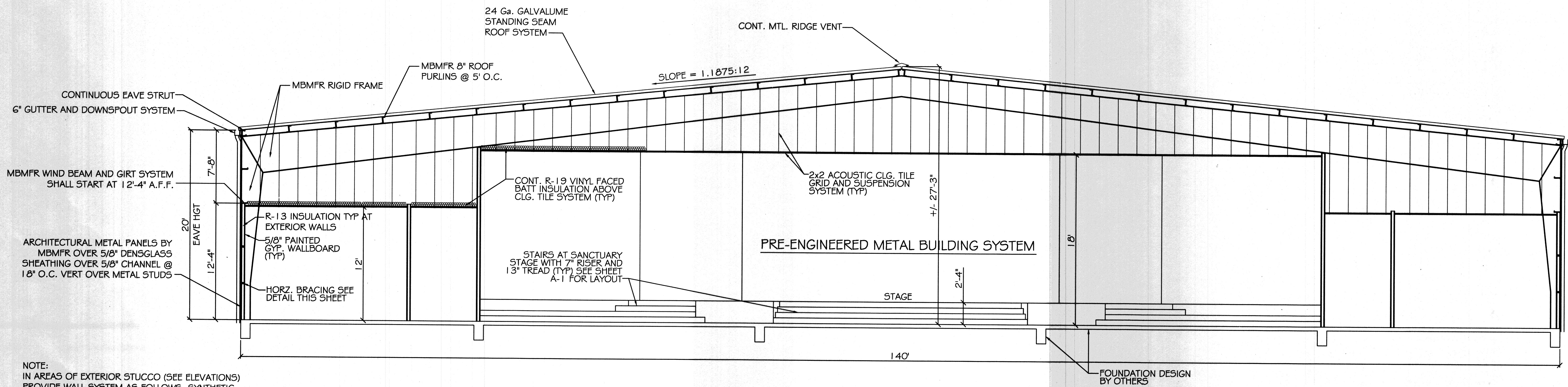
JOB#: 2128

DATE: 01-27-12

SHEET 10

A-2

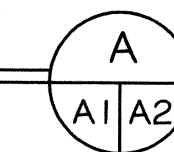
OF 21



NOTE:  
IN AREAS OF EXTERIOR STUCCO (SEE ELEVATIONS)  
PROVIDE WALL SYSTEM AS FOLLOWS. SYNTHETIC  
STUCCO FINISH OVER TYVEK STUCCO WRAP, OVER  
DENSGLOSS, OVER METAL STUD WALL SYSTEM.

SECTION

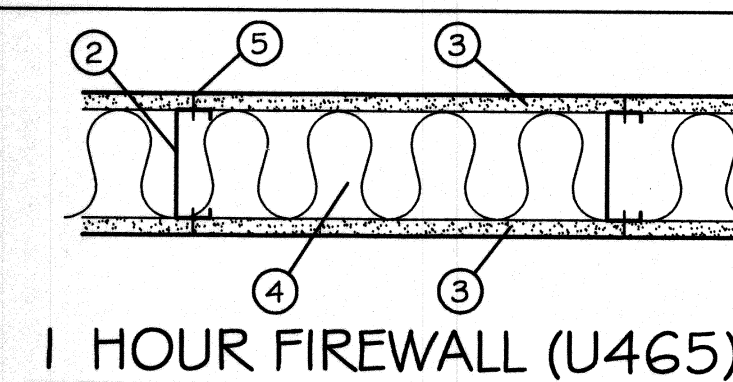
SCALE: 3/16" = 1'-0"



**WINDBORNE DEBRIS PROTECTION  
FASTENING SCHEDULE FOR  
WOOD STRUCTURAL PANELS**

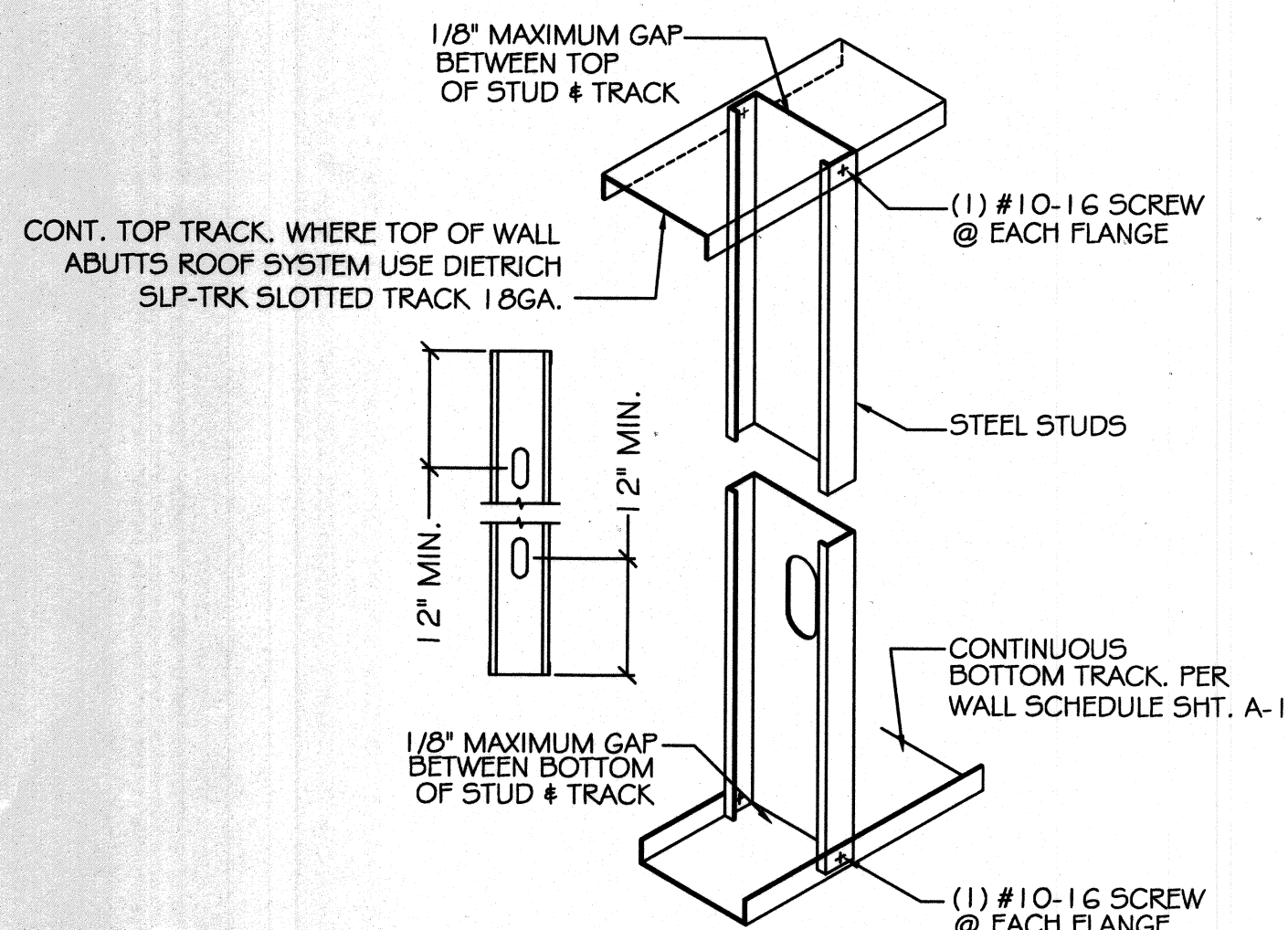
FASTENER TYPE	FASTENER SPACING		
	PANEL SPAN ≤ 4 FOOT	4 FOOT PANEL SPAN ≤ 6 FOOT	6 FOOT PANEL SPAN ≤ 8 FOOT
2-1/2" #6 WOOD SCREWS	16"	12"	9"
2-1/2" #8 WOOD SCREWS	16"	16"	12"

WINDOWS IN BUILDINGS LOCATED IN WIND BORNE DEBRIS REGIONS SHALL HAVE GLAZED OPENINGS PROTECTED FROM WINDBORNE DEBRIS. WOOD STRUCTURAL PANELS WITH A MIN. THICKNESS OF 7/16" AND A MAX. SPAN OF 8 FEET SHALL BE PERMITTED FOR OPENING PROTECTION IN ONE AND TWO STORY BUILDINGS. PANELS SHALL BE PRECUT TO COVER THE GLAZED OPENINGS WITH ATTACHMENT HARDWARE PROVIDED.



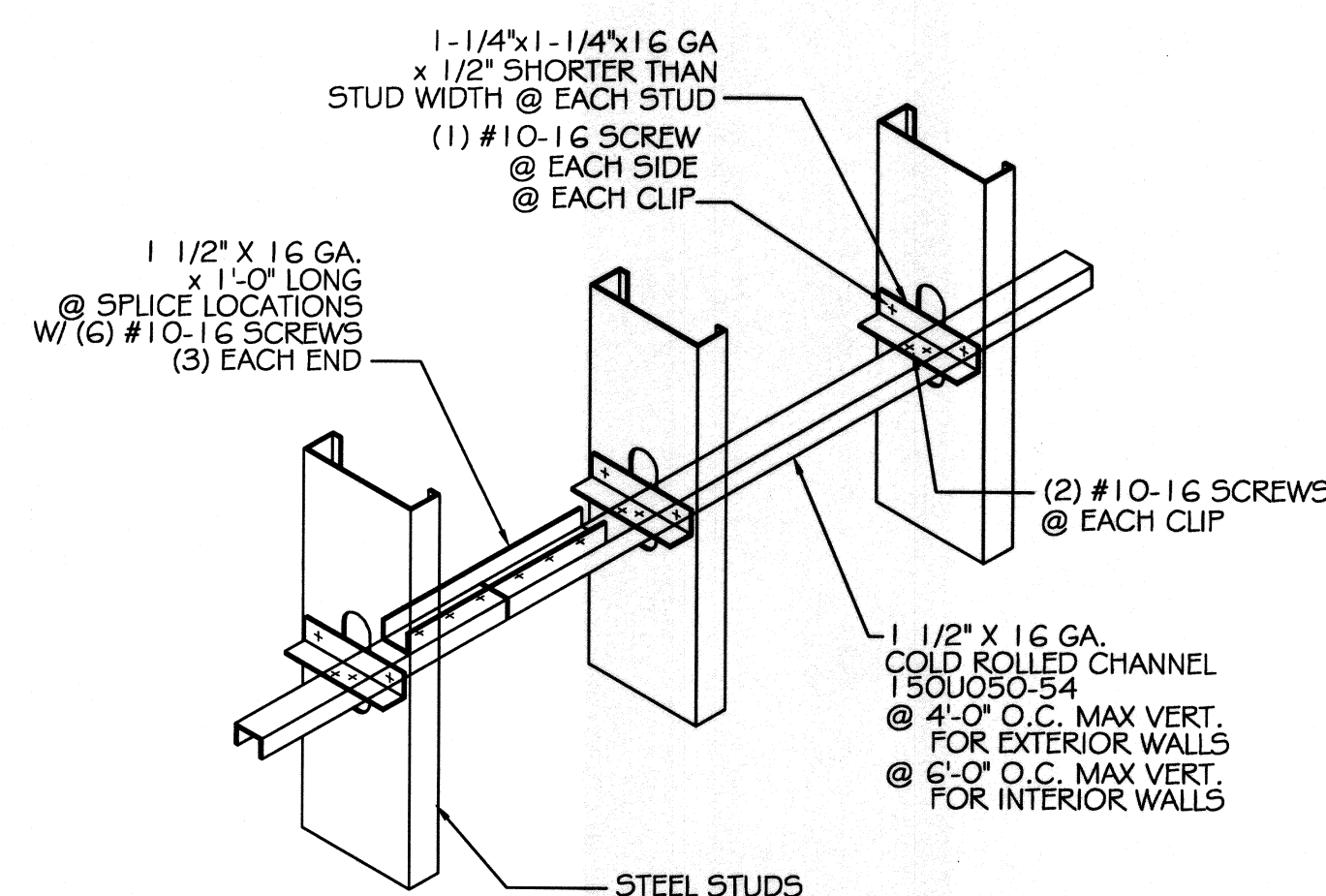
UL465

- FLOOR AND CEILING RUNNER: (NOT SHOWN) 25 MSG MIN. GALV. STEEL 1" HIGH, RETURN LEGS 3-5/8" (MIN), ATTACHED TO FLOOR AND CEILING WITH FASTENERS AT 24" O.C.
- STEEL STUDS: 3-5/8" WIDE (MIN.), 1-1/4" LEGS, 3/8" RETURN, FORMED OF 25 MSG GALV. STEEL, MAX. SPACING 24" O.C.
- GYPSUM WALLBOARD: 5/8" THICK, 4' WIDE, ATTACHED TO STEEL STUDS AND FLOOR AND CEILING TRACK WITH 1" LONG TYPE "S" SELF-TAPPING STEEL SCREWS SPACED 8" O.C. ALONG EDGES OF BOARD AND 12" O.C. IN THE FIELD OF THE BOARD. JOINTS ORIENTED VERT. AND STAGGERED ON OPPOSITE SIDES OF THE ASSEMBLY.
- BATTS AND BLANKETS: MINERAL WOOL INSULATION, PARTIALLY OR COMPLETELY FILLING STUD CAVITY.
- JOINT AND TAPE COMPOUND: VINYL, DRY OR PREMIXED JOINT COMPOUND, APPLIED IN TWO COATS TO JOINTS AND SCREW HEADS; PAPER TAPE, 2" WIDE, EMBEDDED IN FIRST LAYER OF COMPOUND OVER ALL JOINTS. AS AN ALTERNATE, NOMINAL 3/32" THICK GYPSUM VENEER PLASTER MAY BE APPLIED TO THE ENTIRE SURFACE OF CLASSIFIED VENEER BASEBOARD. JOINT REINFORCED.



TRACK CONNECTION DETAIL

SCALE: N.T.S.



HORZ. BRACING DETAIL

SCALE: N.T.S.