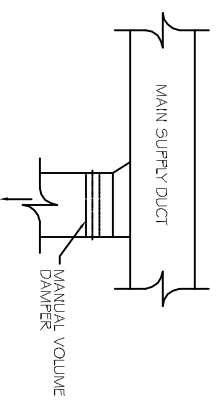
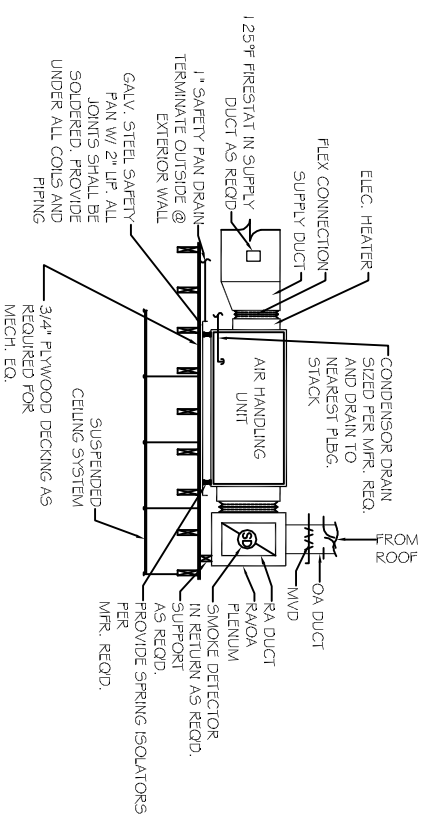
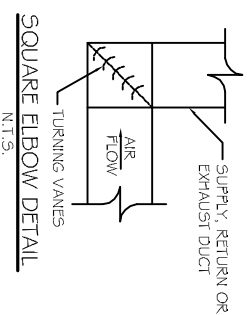
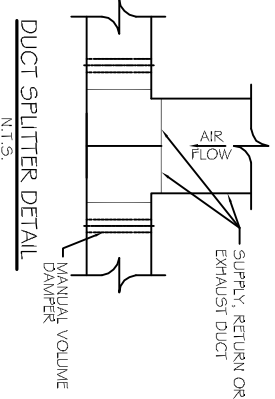


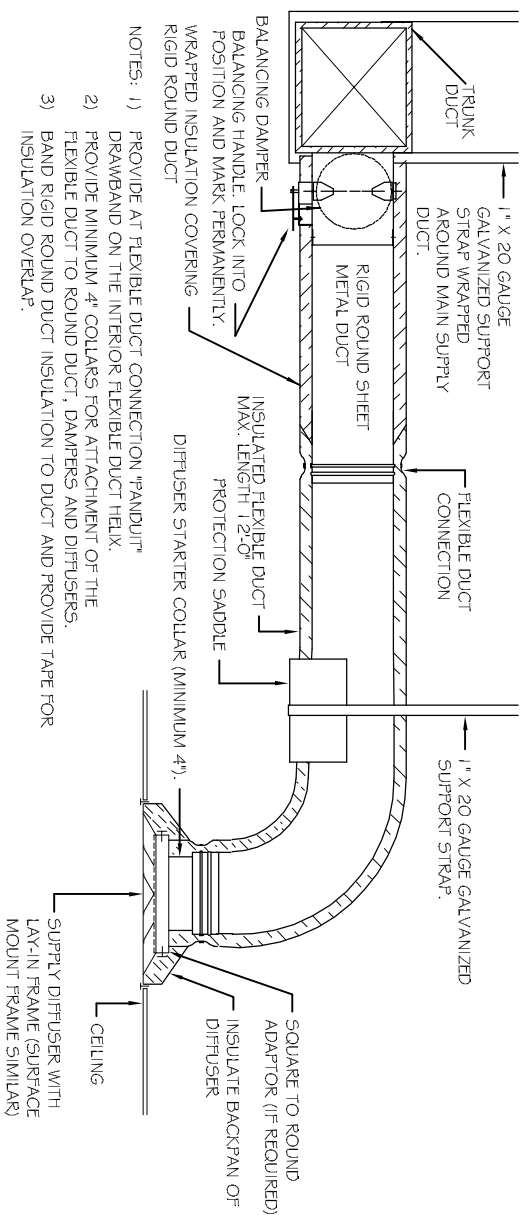
CONDENSING MOUNTING DETAIL
N.T.S.



SUPPLY DUCT TAKE-OFF DETAIL
N.T.S.



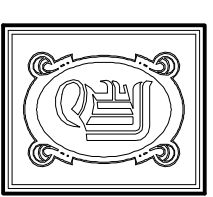
TYPICAL HORIZONTAL AHU DETAIL
SCALE: N.T.S.



DIFFUSER CONNECTION DETAIL-FLEX DUCT
N.T.S.

HVAC NOTES

1. CONCEALED DUCTWORK TO BE UL-181, CLASS 1, FIBERGLASS DUCTBOARD. DUCTS SHALL BE SIZED TO LIMIT MAIN DUCTS TO 1,000 CFM & SECONDARY DUCTS TO 800 CFM. TO BE INSTALLED PER SMACNA STANDARDS.
2. EXPOSED DUCTWORK TO BE GALVANIZED SHEET METAL PER SMACNA STANDARDS. LINE WITH NEOPRENE COATED 1.0\"/>



DAMMON
ENGINEERING, INC.

CHIEF ENGINEER
EMMETT
DAMMON, P.E.

CHIEF ARCHITECT
ROBERT
WILTSE

554 OLD SPANISH TRAIL
SUDELL, LA. 70458
OFFICE: 985-649-5832
FAX: 985-641-5950

WEBSITE:
WWW.DAMMONENGINEERING.COM
EMAIL:
DAMMONENG@BELL-SOUTH.NET

ARCHITECTURE
ENGINEERING
STUDIES
PLANNING
INVESTIGATION
EXPERT WITNESSES

LIVING THE WORD
INTERNATIONAL

25228
OLD SPANISH TRAIL
SUDELL, LA
70461

MECHANICAL
DETAILS

REV:
SCALE: AS NOTED
JOB#: 2128
DATE: 01-27-12
SHEET 10

M-2

OF 15