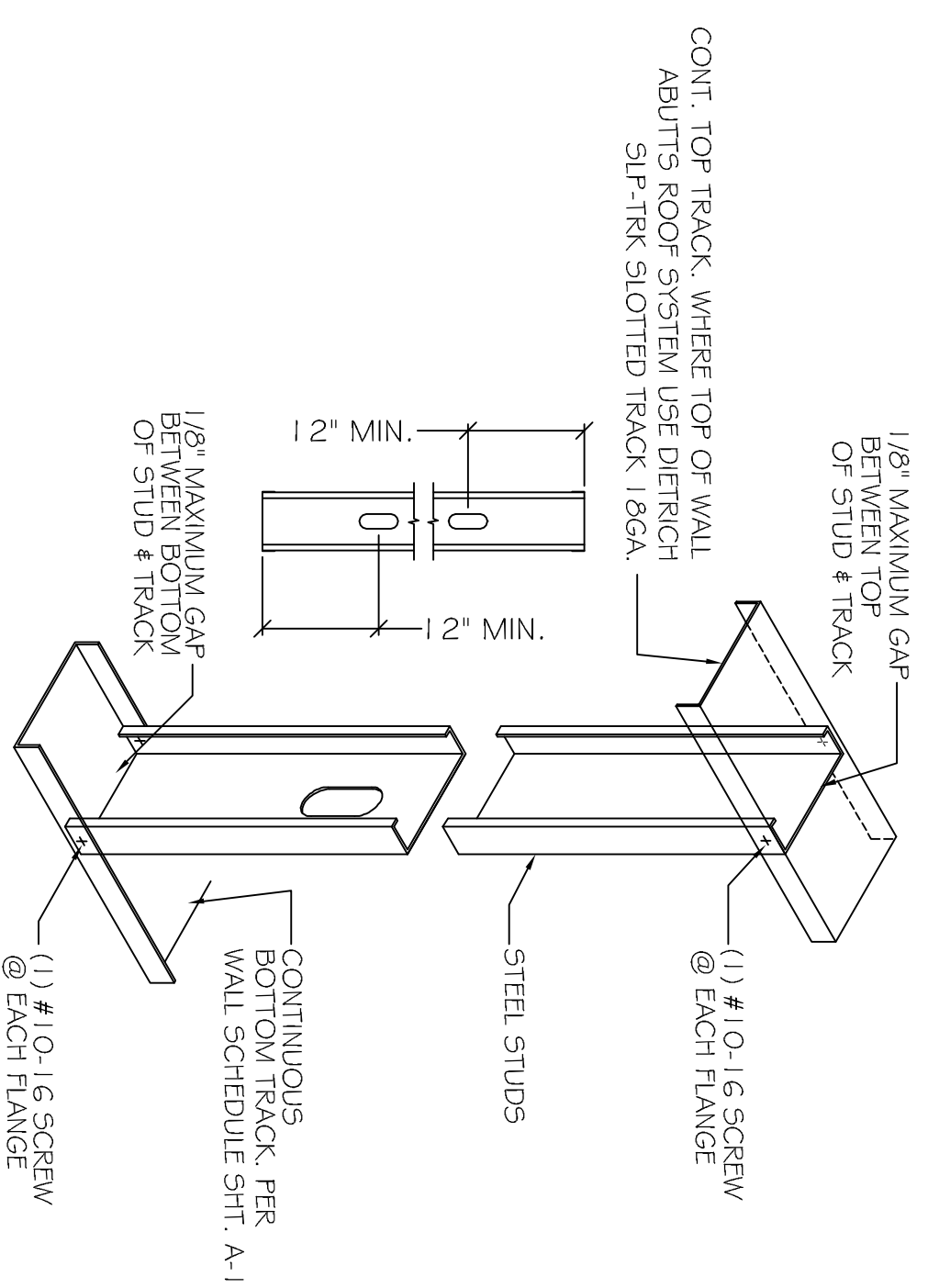
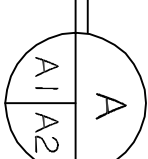


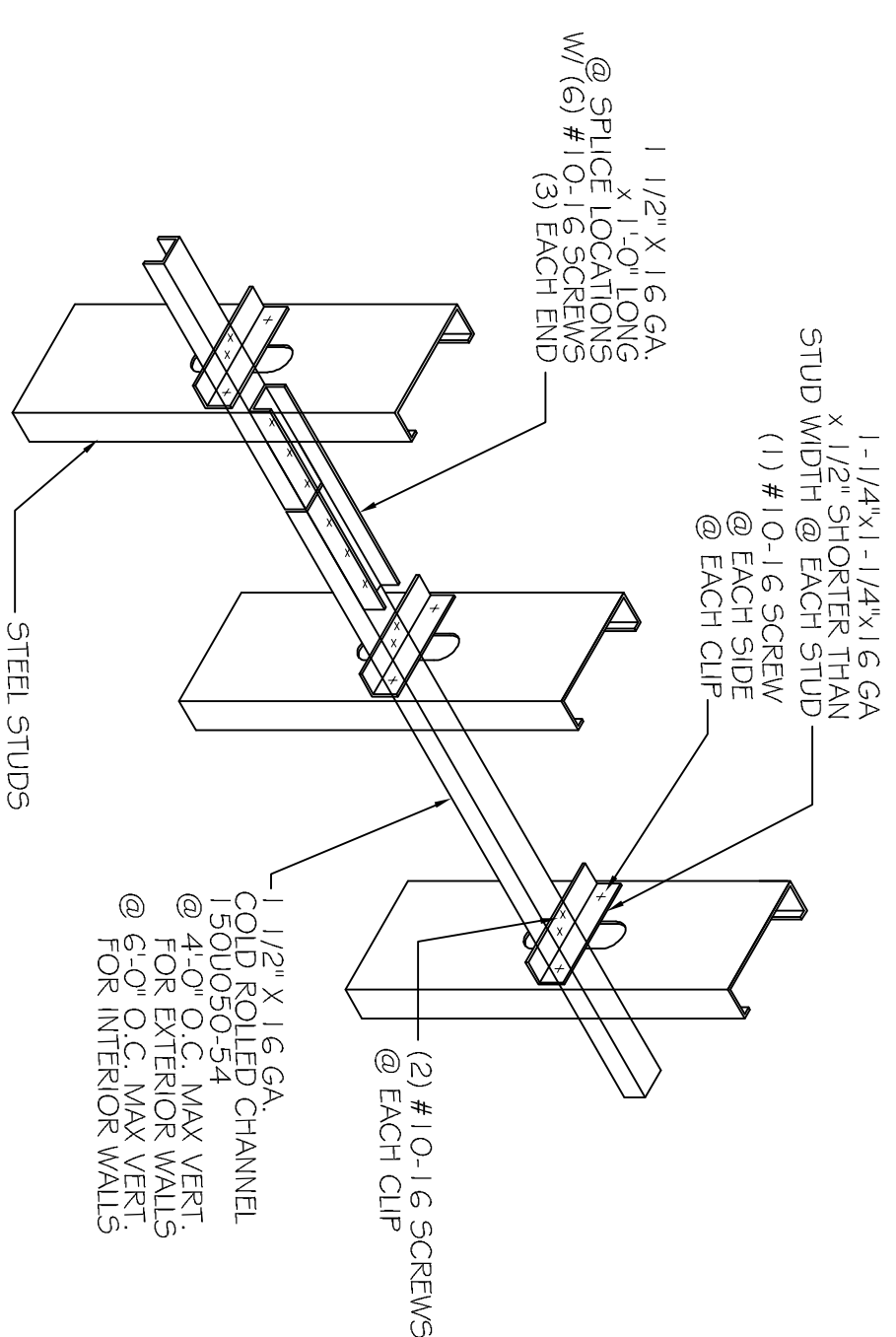
NOTE:
IN AREAS OF EXTERIOR STUCCO (SEE ELEVATIONS) PROVIDE WALL SYSTEM AS FOLLOWS, SYNTHETIC STUCCO FINISH OVER TYVEK STUCCO WRAP, OVER DENGLASS, OVER METAL STUD WALL SYSTEM.

SECTION

SCALE: 3/16" = 1'-0"



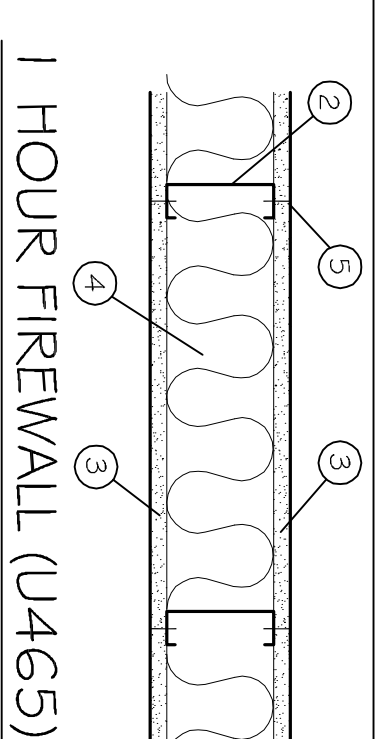
TRACK CONNECTION DETAIL
SCALE: N.T.S.



HORZ. BRACING DETAIL
SCALE: N.T.S.

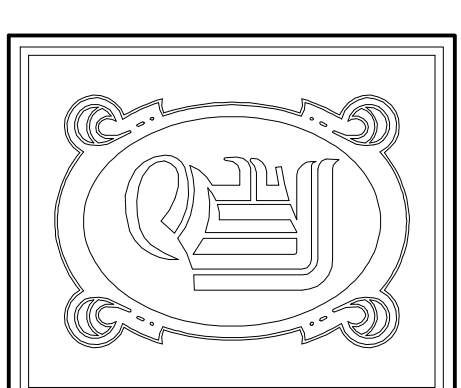
| WINDBORNE DEBRIS PROTECTION FASTENER SCHEDULE FOR WOOD STRUCTURAL PANELS | | | |
|--|----------------------------|----------------------------|----------------------------|
| FASTENER TYPE | FASTENER SPACING | | |
| | 4 FOOT PANEL SPAN ≤ 4 FOOT | 6 FOOT PANEL SPAN ≤ 6 FOOT | 8 FOOT PANEL SPAN ≤ 8 FOOT |
| 2-1/2" #6 WOOD SCREWS | 16" | 12" | 9" |
| 2-1/2" #8 WOOD SCREWS | 16" | 16" | 12" |

WINDOWS IN BUILDINGS LOCATED IN WIND BORNE DEBRIS REGIONS SHALL HAVE GLAZED OPENINGS PROTECTED FROM WINDBORNE DEBRIS. WOOD STRUCTURAL PANELS WITH A MIN. THICKNESS OF 7/16" AND A MAX. SPAN OF 8 FEET SHALL BE PERMITTED FOR OPENING PROTECTION IN ONE AND TWO STORY BUILDINGS. PANELS SHALL BE PRECUT TO COVER THE GLAZED OPENINGS WITH ATTACHMENT HARDWARE PROVIDED.



1 HOUR FIREWALL (U465)

- U465
- FLOOR AND CEILING RUNNER: (NOT SHOWN) 25 MSG. MIN. GALV. STEEL, 1" HIGH, RETURN LEGS 3-5/8" (MIN.) ATTACHED TO FLOOR AND CEILING WITH FASTENERS AT 24" O.C.
 - STEEL STUDS: 3-5/8" WIDE (MIN.), 1-1/4" LEGS, 3/8" RETURN, FORMED OF 25 MSG GALV. STEEL, MAX. SPACING 24" O.C.
 - GYP-SUM WALLBOARD: 5/8" THICK, 4" WIDE, ATTACHED TO STEEL STUDS AND FLOOR AND CEILING TRACK WITH 1" LONG TYPE "S" SELF-TAPPING STEEL SCREWS SPACED 8" O.C. ALONG EDGES OF OPPOSITE SIDES OF THE BOARD. JOINTS ORIENTED VERT. AND STAGGERED ON OPPOSITE SIDES OF THE ASSEMBLY.
 - BATTS AND BLANKETS: MINERAL WOOL INSULATION, PARTIALLY OR COMPLETELY FILLING STUD CAVITY.
 - JOINT AND TAPE COMPOUND: VINYL, DRY OR PREMIXED JOINT COMPOUND, APPLIED IN TWO COATS TO JOINTS AND SCREW HEADS; PAPER TAPE, 2" WIDE, EMBEDDED IN FIRST LAYER OF COMPOUND OVER ALL JOINTS, AS AN ALTERNATE, NOMINAL 3/32" THICK GYPSUM VENEER PLASTER MAY BE APPLIED TO THE ENTIRE SURFACE OF CLASSIFIED VENEER BASEBOARD. JOINT REINFORCED.



DAMMON ENGINEERING, INC.

CHIEF ENGINEER
EMMETT DAMMON, P.E.
CHIEF ARCHITECT
ROBERT WILTSE

554 OLD SPANISH TRAIL
SLIDELL, LA, 70458
OFFICE: 985-649-5832
FAX: 985-641-5950

WEBSITE:
WWW.DAMMONENGINEERING.COM
EMAIL:
DAMMON@BELLSouth.NET

ARCHITECTURE
ENGINEERING
STUDIES
PLANNING
INVESTIGATION
EXPERT WITNESS

LIVING THE WORD
INTERNATIONAL

25228
OLD SPANISH TRAIL
SLIDELL, LA
70461

BUILDING
SECTION

SCALE: AS NOTED
JOB#: 2128
DATE: 01-27-12
SHEET 10

A-2

OF 21