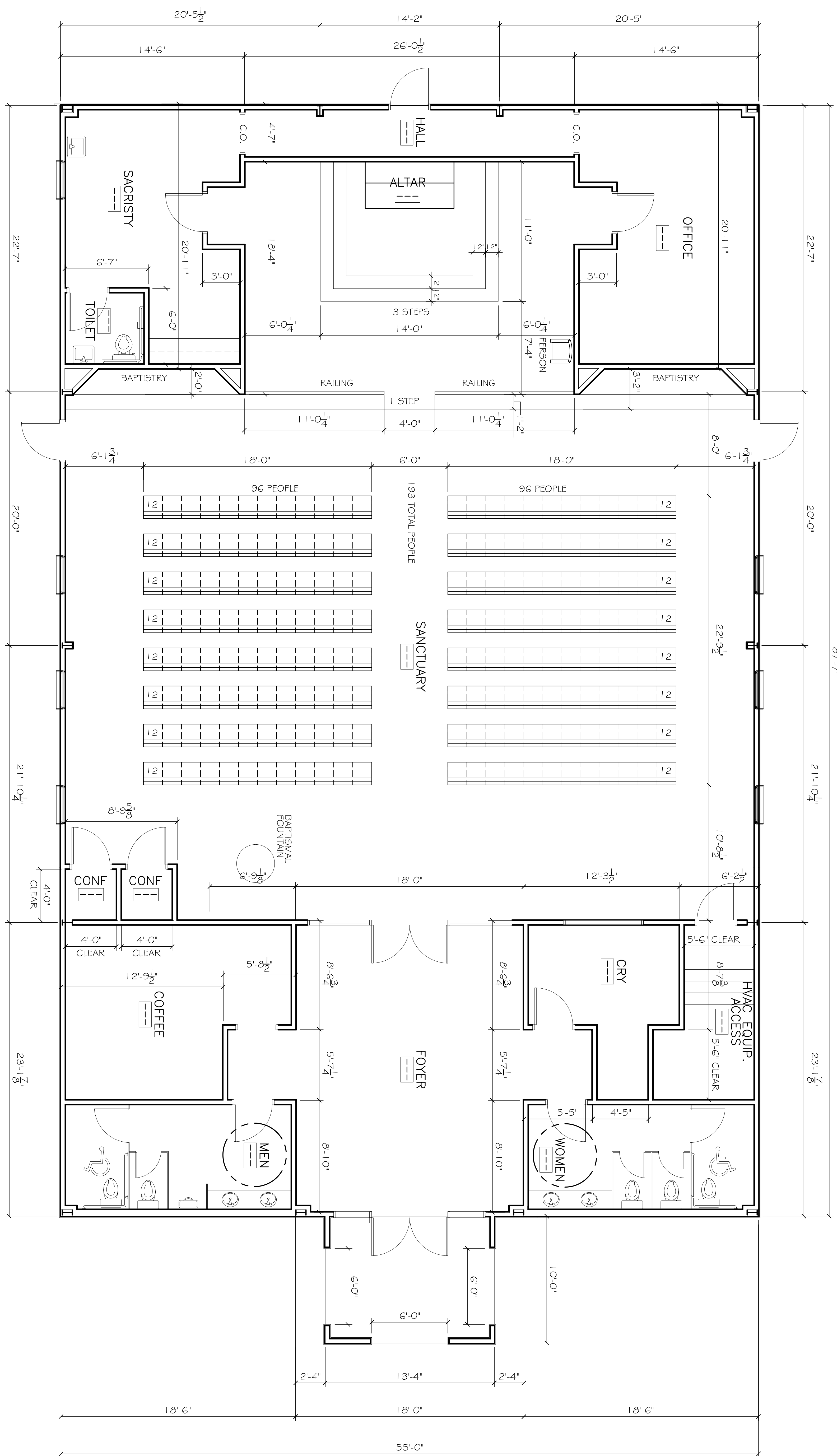


1 FLOOR PLAN
SCALE: 1/4" = 1'-0"



SHEET NO. **A101**
OF 1

DRAWING NUMBER: A101
SHEET TITLE: A NEW CATHOLIC CHURCH FOR THE ARCHDIOCESE OF NEW ORLEANS
LACOMBE, LOUISIANA
JOB No: 2250 DATE: JULY 2015
DRAWN BY: JTL CHECKED BY: CKD

The above drawings and specifications, design and arrangements represented hereby and shall remain the property of Dammon Engineering, and no part thereof shall be copied, reproduced, or used in connection with any work or project other than the specific project for which the same were prepared and furnished without written consent of Dammon Engineering. Mutual contact with these drawings or specifications shall constitute acceptable evidence of acceptance of these conditions.

REVISIONS		DATE
#	DESCRIPTION	

DAMMON ENGINEERING, INC.
Architects & Engineers

Chief Architect: Kevin J. Kinchen, NCARB
Chief Engineer: Brian Mistich, PE
554 Old Spanish Trail
Slidell, LA 70458

www.dammonengineering.com
info@dammonengineering.com
PH: 985.649.5832
F: 985.641.5950