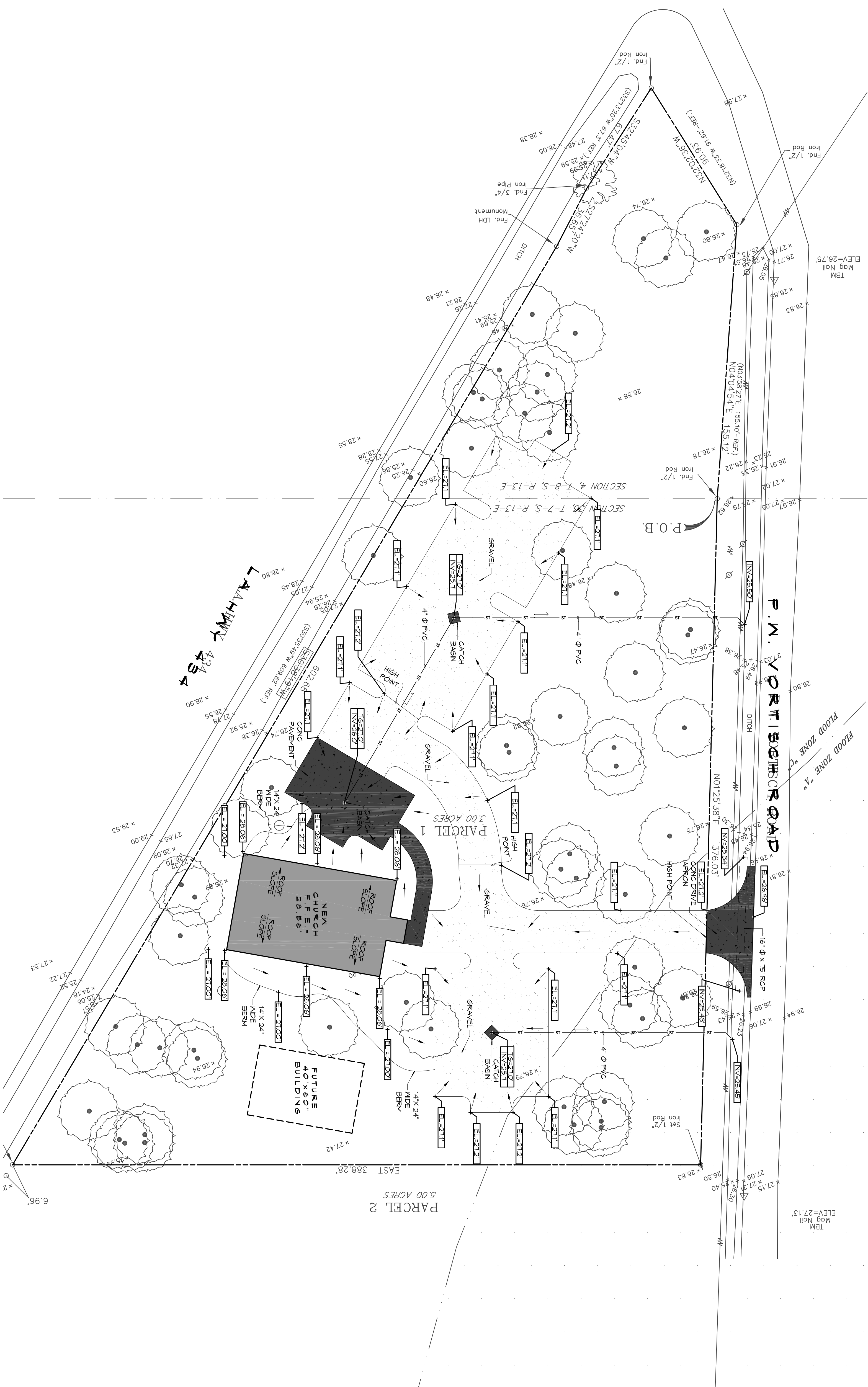
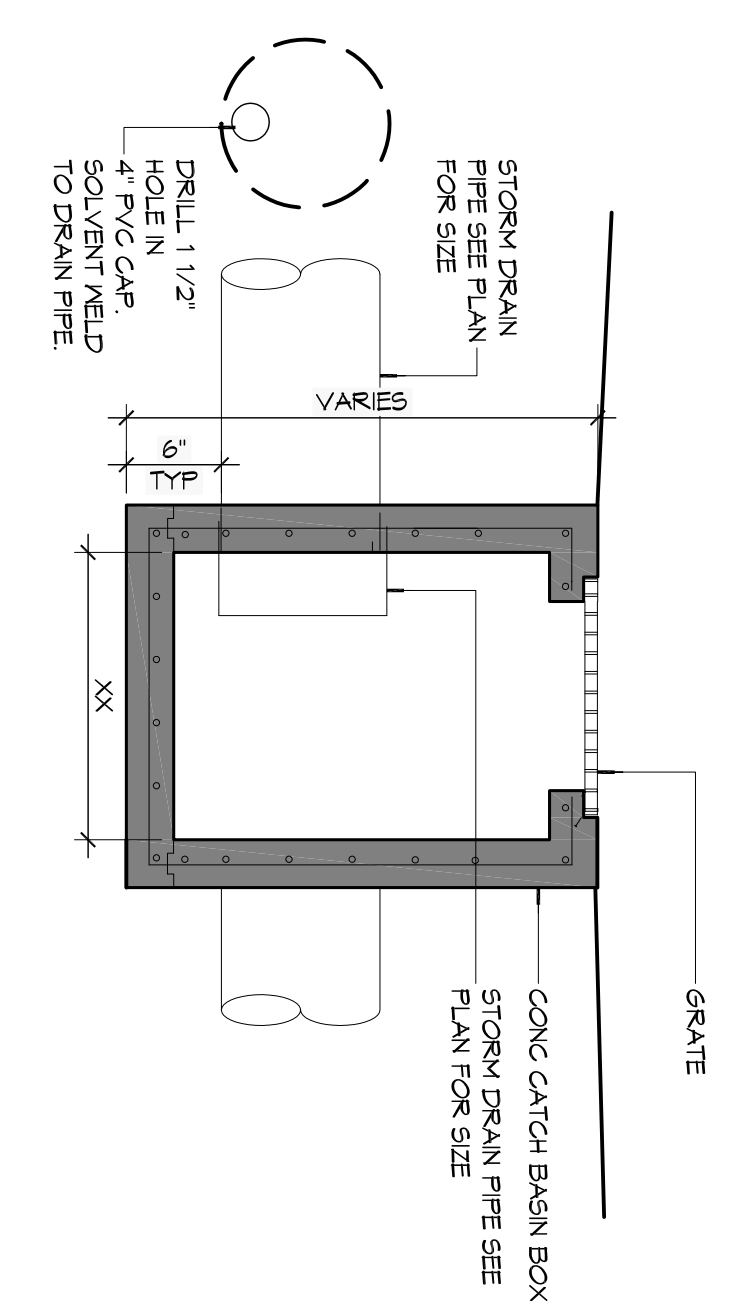


1 SITE PLAN
SCALE: 1" = 30'



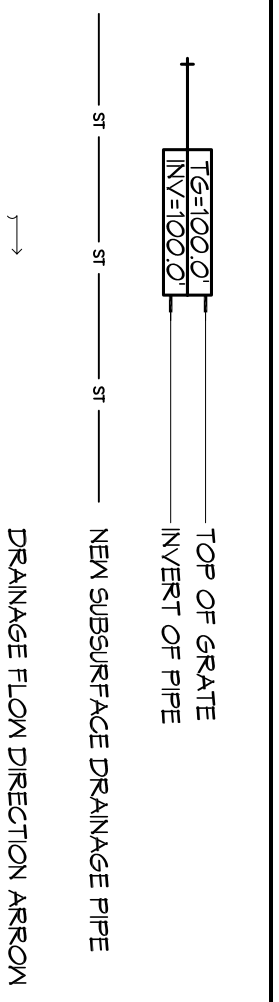
2 DETAIL
SCALE: NTS
TYPICAL CATCH BASIN



GENERAL NOTES

1. DRAIN PIPE(S) ALONG AIRPORT MUST BE THE BELL AND SPIGOT TYPE WITH 1/2" RING RUBBER GASKETS. THE BELLS OF THE PIPES SHALL BE LAID UPSTREAM. ALL JOINTS SHALL BE WEATHERED WITH GEOTEXTILE FABRIC. ALL PIPES SHALL REQUIRE A 3" COMPACTED SAND OR LIVERSTONE BASE.
2. REMOVE DIRBS AND CLEAN BOTTOM OF DITCHES DOWN 6" IN DEPTH - AND TYPE ANY BROKEN/CRACKED PIPES OR COLLECTORS WITH SAME SIZE AND TYPE.
3. DRAIN PIPE AND FITTINGS WITHIN PROPERTY LINE SHALL BE POLYVINYL CHLORIDE PLASTIC PIPE, MEETING CLASS 100 C-900 P/C.
4. ELEVATIONS SHOWN ARE M.S.L.
5. FIELD VERIFY ALL ELEVATIONS AND AND DRAINAGE SYSTEM PLACEMENT FROM TO S/ART OF WORK.
6. PROVIDE VERTICAL ELBOW AT CONNECTIONS FROM CONNECTION TO EXISTING DRAINAGE SYSTEM. ELBOW SHALL BE 180° TURNED TO BE SURE THAT THE DOWNPOINT CAN BE INSERTED INTO THE PIPE OPENING.

SITE DRAINAGE LEGEND



STORM WATER RUN-OFF CALCULATIONS

REVISIONS	#	DESCRIPTION	DATE

PRO MULTIS LACOMBE CHAPEL

PM VORTSCH ROAD AND LA HWY 434 LACOMBE, LOUISIANA 70445

JOB No: 2250 DATE: AUGUST 6, 2015
DRAWN BY: KJK CHECKED BY: CKD

SHEET TITLE: SITE PLAN - DRAINAGE

DRAWING NUMBER:

C102

SHEET No. VALUE OF 17

Chief Architect: Kevin J. Kinchen, NCARB
Chief Engineer: Brian Mistich, PE
554 Old Spanish Trail
Stidell, LA 70458

www.dammonengineering.com
info@dammonengineering.com
PH: 985.649.5832
F: 985.641.5950