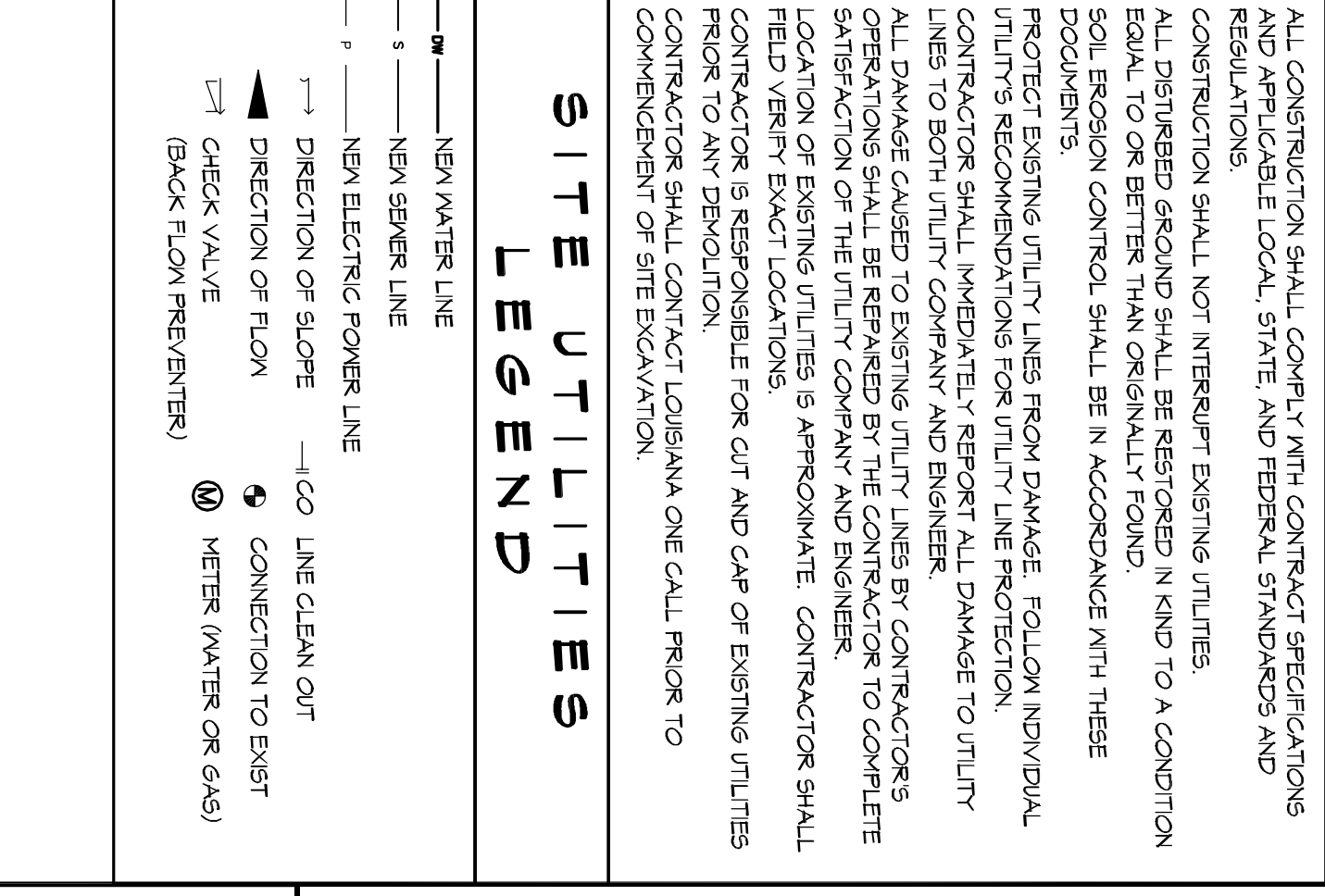
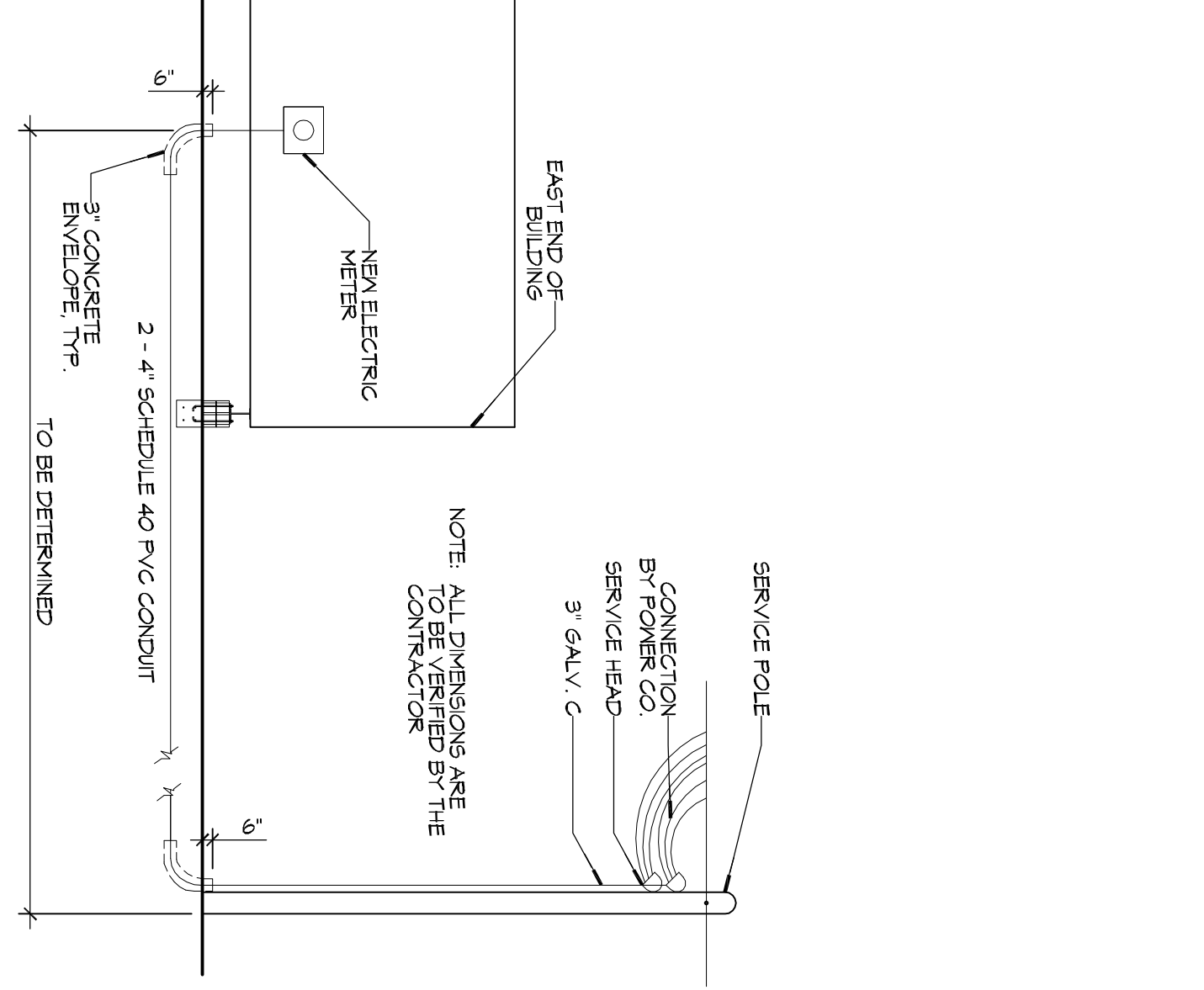
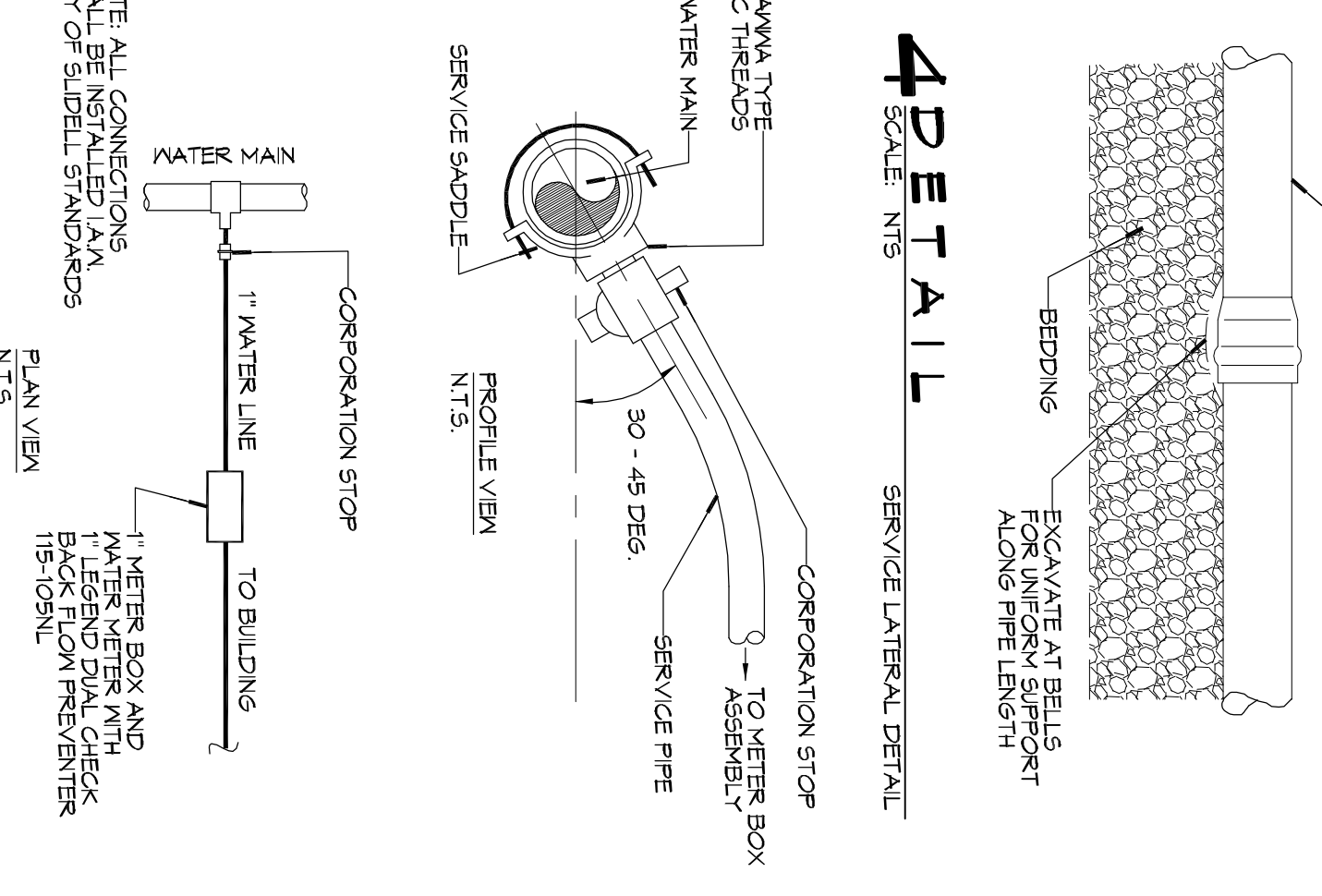
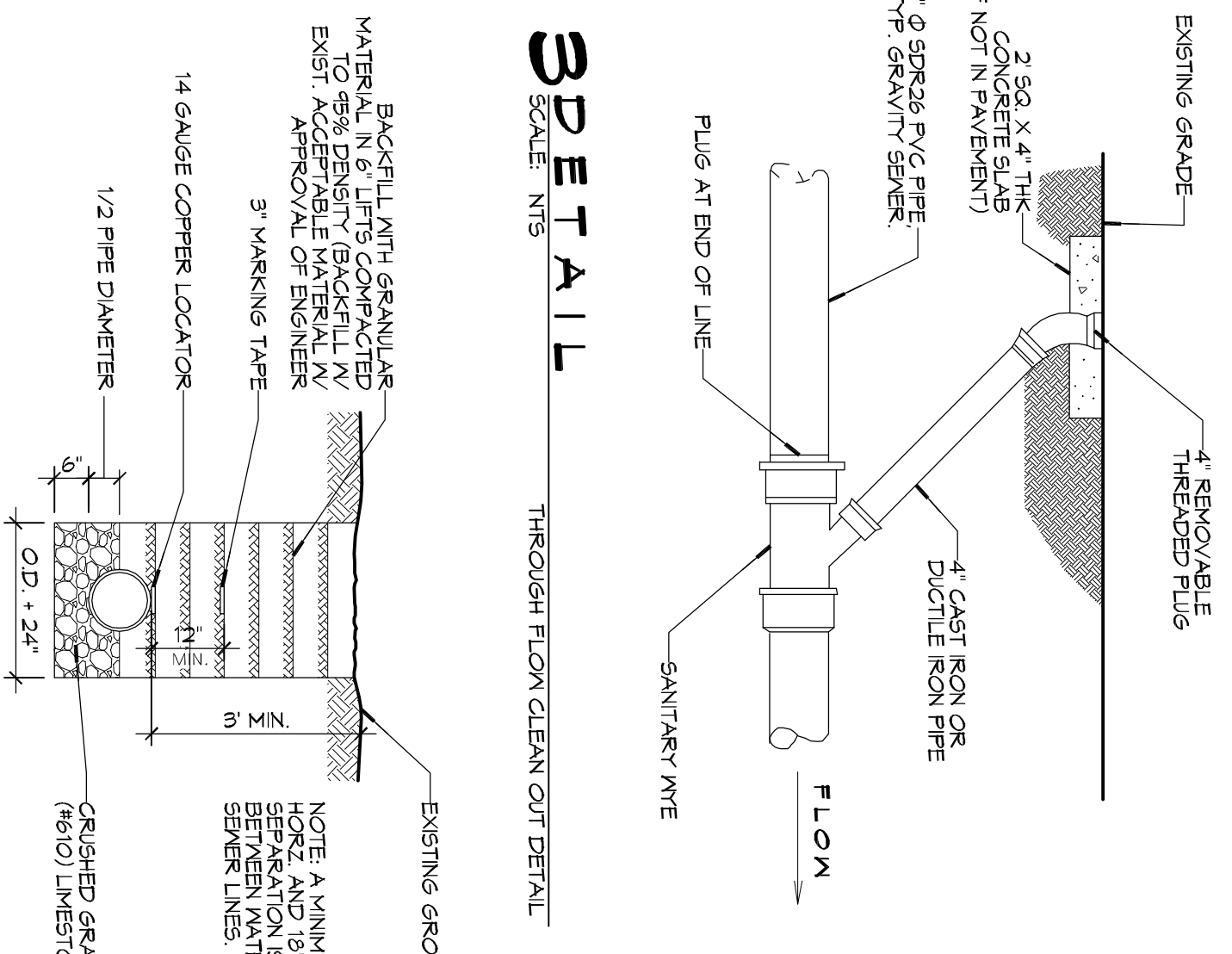
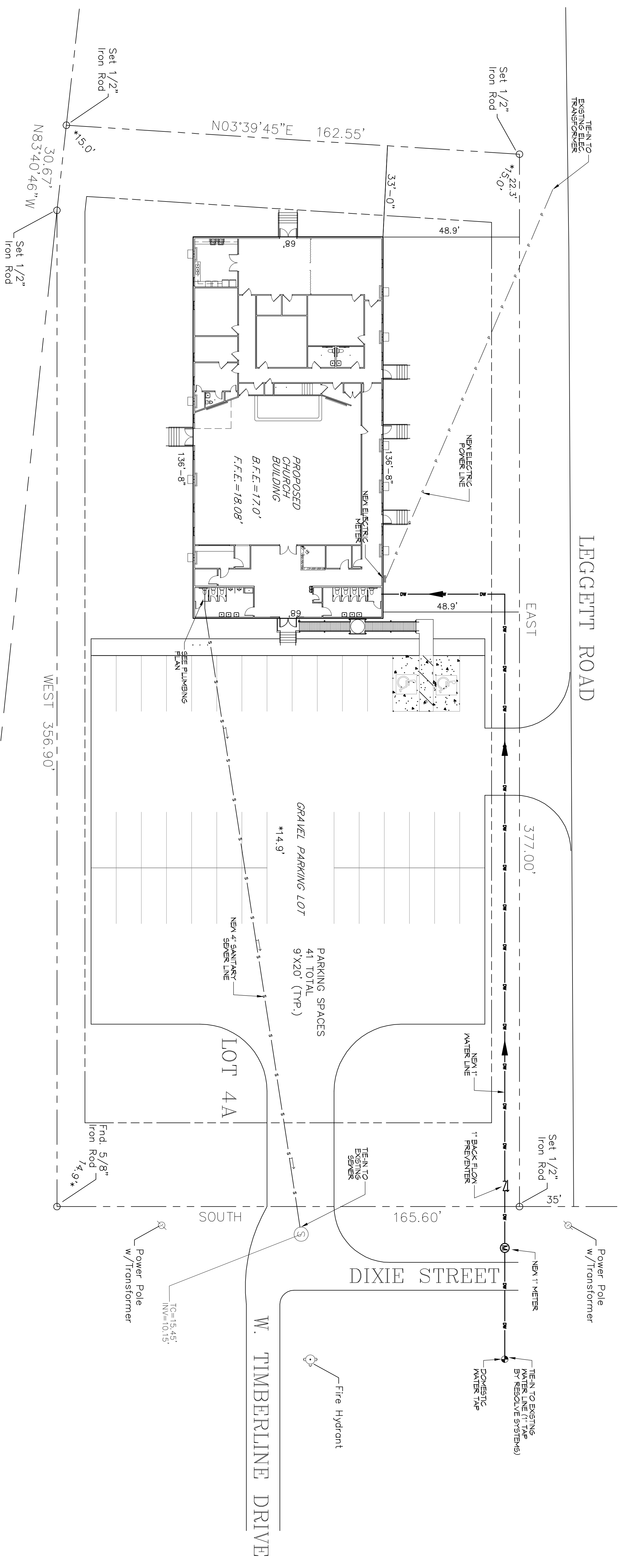


1 SITE UTILITIES PLAN

SCALE: 1"=30'-0"



- ### GENERAL NOTES
1. ALL CONSTRUCTION SHALL COMPLY WITH CONTRACT SPECIFICATIONS AND APPLICABLE LOCAL, STATE, AND FEDERAL STANDARDS AND REGULATIONS.
 2. CONSTRUCTION SHALL NOT INTERRUPT EXISTING UTILITIES.
 3. ALL DISTURBED GROUND SHALL BE RESTORED IN KIND TO A CONDITION EQUAL TO OR BETTER THAN ORIGINALLY FOUND.
 4. SOIL EROSION CONTROL SHALL BE IN ACCORDANCE WITH THESE DOCUMENTS.
 5. PROTECT EXISTING UTILITY LINES FROM DAMAGE. FOLLOW INDIVIDUAL CONTRACTOR'S RECOMMENDATIONS FOR UTILITY LINE PROTECTION.
 6. LINES TO BOTH UTILITY COMPANY AND ENGINEER.
 7. ALL DAMAGE CAUSED TO EXISTING UTILITY LINES BY CONTRACTORS OPERATIONS SHALL BE REPAIRED BY THE CONTRACTOR TO COMPLETE SATISFACTION OF THE UTILITY COMPANY AND ENGINEER.
 8. LOCATION OF EXISTING UTILITIES IS APPROXIMATE. CONTRACTOR SHALL FIELD VERIFY EXACT LOCATIONS.
 9. CONTRACTOR IS RESPONSIBLE FOR CUT AND CAP OF EXISTING UTILITIES PRIOR TO ANY DEMOLITION.
 10. CONTRACTOR SHALL CONTACT LOUISIANA ONE CALL PRIOR TO COMMENCEMENT OF SITE EXCAVATION.

- ### SITE UTILITIES LEGEND
- NEW WATER LINE
 - NEW SEWER LINE
 - NEW ELECTRIC POWER LINE
 - - - DIRECTION OF SLOPE
 - CO — LINE CLEAN OUT
 - ▶ DIRECTION OF FLOW
 - ⊘ CHECK VALVE (BACK FLOW PREVENTER)
 - ⊙ METER (WATER OR GAS)

SHEET NO. 4 OF 15

C102

DRAWING NUMBER:

SHEET TITLE: SITE UTILITIES PLAN

3770 LEGGETT ROAD
SLIDELL, LA 70460

JOB No: 2295 DATE: 09/09/2016

DRAWN BY: CKD/JTL CHECKED BY: BAM

W. LOVELL - CIVIL ENGINEER

Professional Engineer Seal for Brian Mistich, License No. 5818



REVISIONS	DESCRIPTION	DATE

DAMMON ENGINEERING, INC.

LOUISIANA & MISSISSIPPI

Chief Engineer: Brian Mistich, PE
594 Old Spanish Trail
Slidell, LA 70458

www.dammonengineering.com
info@dammonengineering.com
PH: 985.649.5832 F: 985.641.5950