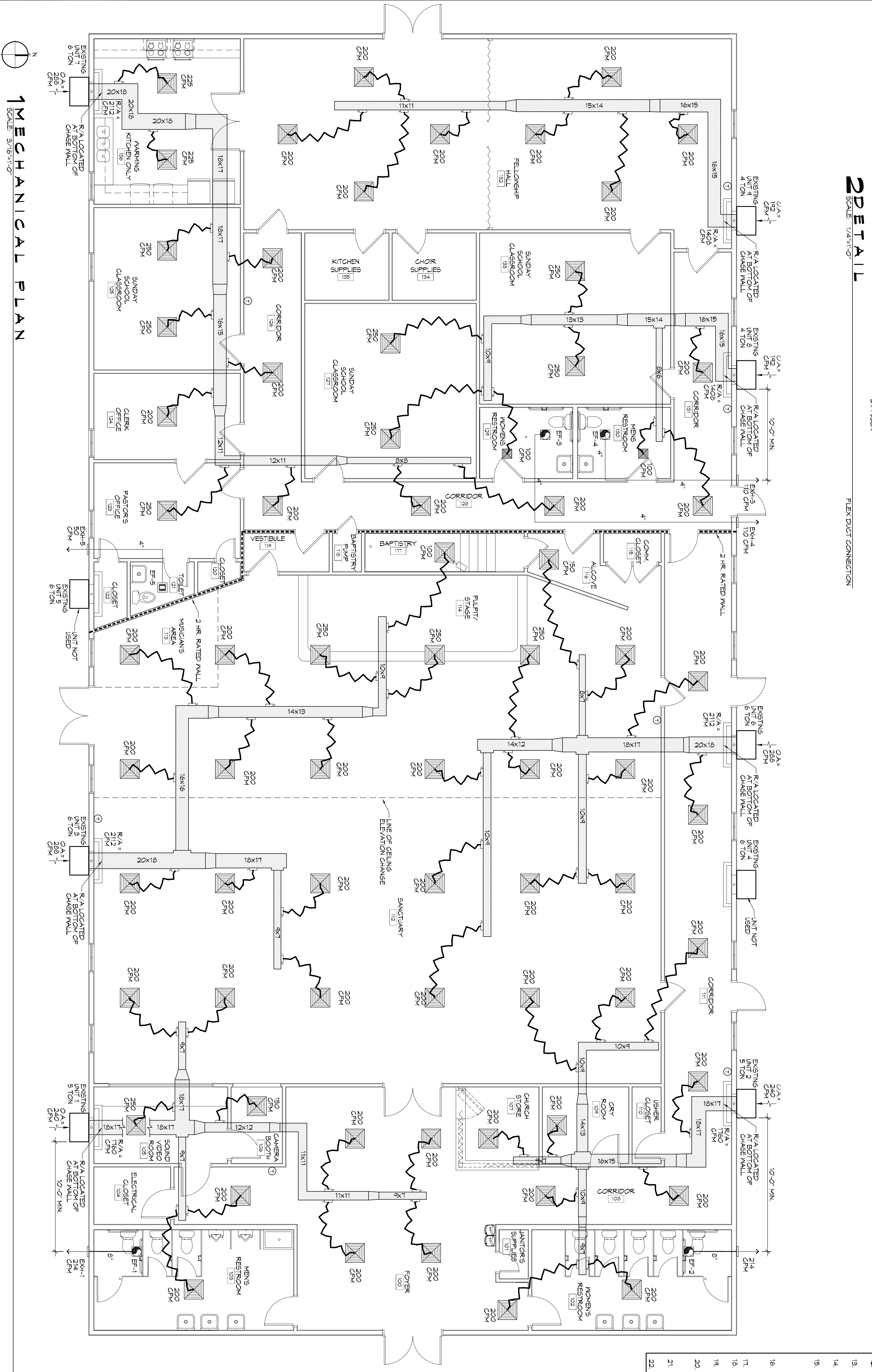
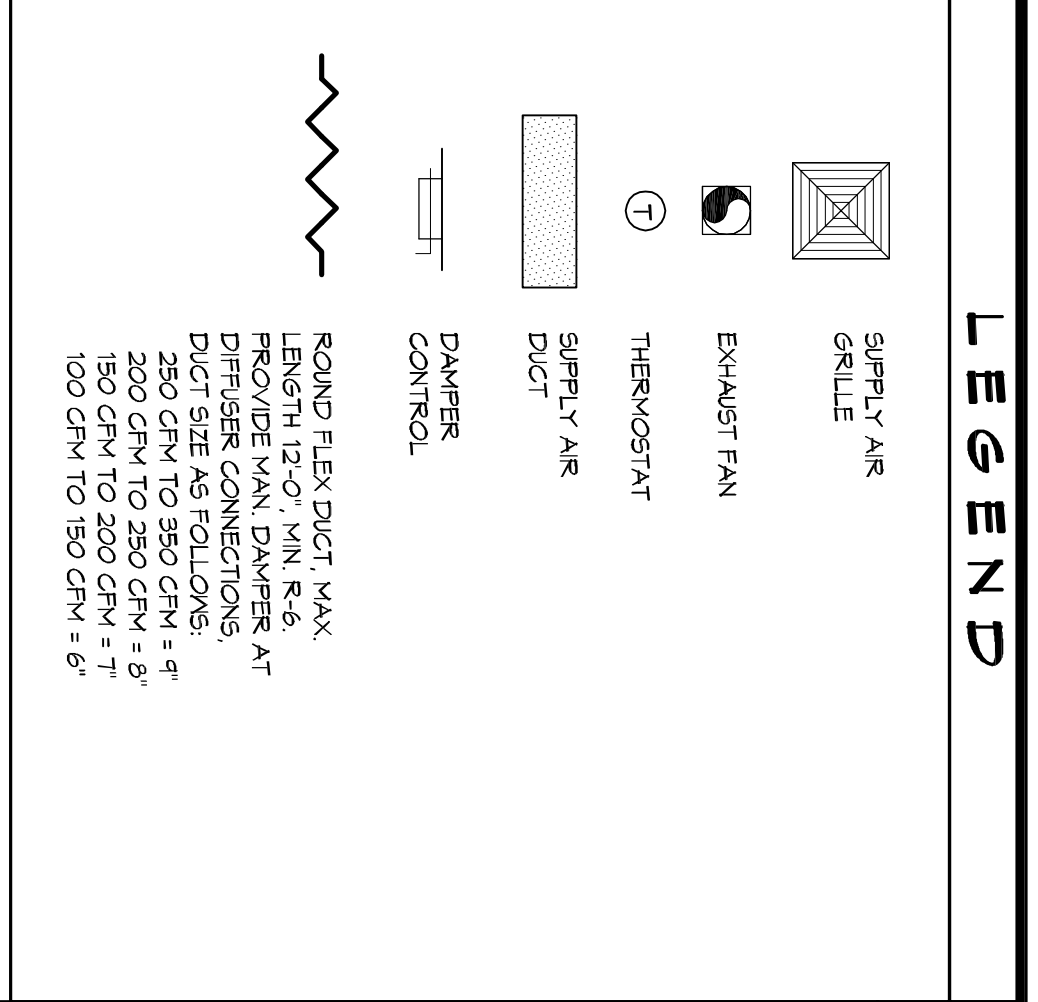


EXHAUST FAN SCHEDULE

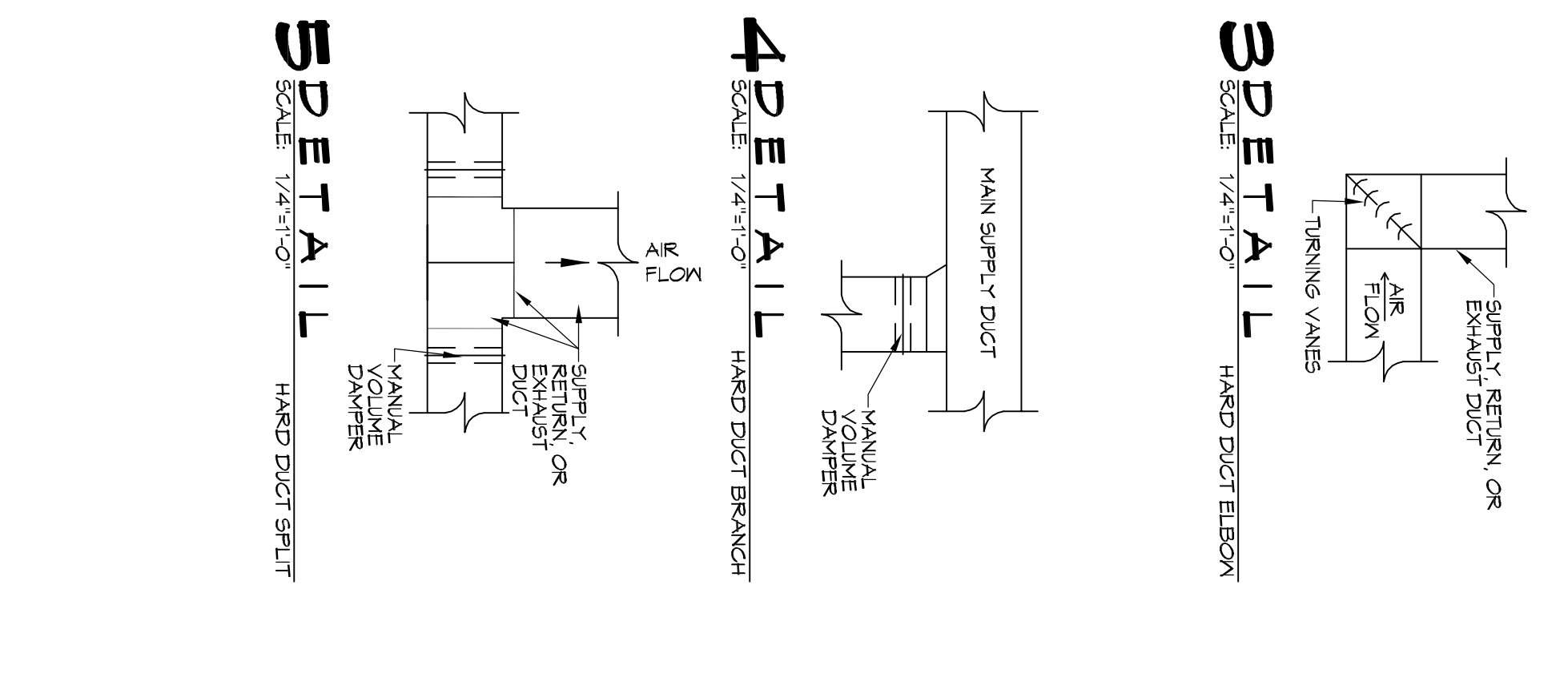
FAN NO.	CFM	VOLTAGE	TYPE	INSTALLATION
EF-1	214	120	VENT	BROAN L200/MEN'S RESTROOM 102
EF-2	214	120	VENT	BROAN L200/MEN'S RESTROOM 103
EF-3	110	120	VENT	BROAN XB110/MEN'S RESTROOM 124
EF-4	110	120	VENT	BROAN XB110/MEN'S RESTROOM 130
EF-5	90	120	VENT	BROAN XB50/TOLLET 121

NOTE:
1. ALL FANS INSTALLED IN RATED ASSEMBLIES SHALL BE EQUIPPED W/ APPROPRIATE FIRE DAMPER TO MATCH ASSEMBLY FIRE RATING.
2. PAINT ALL SHUTTERS AND EXTERIOR GRILLES TO COLOR SPECIFICATION BY ARCHITECT.
3. PROVIDE BRASS SCREENS ON ALL SHUTTERS AND EXTERIOR GRILLES.
4. PROVIDE BACK-FLON PREVENTER ON ALL EXHAUST SYSTEMS.



MECHANICAL HVAC NOTES

- ALL WALL MOUNTED AIRS INTS ARE EXISTING AND ARE TO BE REISED WITH NEW DUCTWORK. ALL NEW DUCTWORK IS DRAWN DIAGRAMMATICALLY AND SHALL BE FIELD VERIFIED PRIOR TO CONSTRUCTION AND INSTALLATION.
- CONCEALED DUCTWORK TO BE GALVANIZED SHEET METAL LINED WITH FIBERGLASS GLASS DUCT LINER, MIN R-4. INSTALLED PER SVACNA STANDARDS.
- EXPOSED DUCTWORK TO BE GALVANIZED SHEET METAL LINED WITH FIBERGLASS GLASS DUCT LINER, MIN R-4. INSTALLED PER SVACNA STANDARDS.
- ROUND FLEXIBLE DUCT TO BE UL-181, CLASS 1, AIR DUCT MATERIALS.
- DUCT SIZES SHOWN ARE CLEAN INSIDE DIMENSIONS.
- N ALL SYSTEMS OVER 2000 CFM AND LESS THAN 15,000 CFM, SMOKE DETECTORS SHALL BE INSTALLED IN ACCORDANCE WITH NFPA 72E IN THE RETURN DUCT DOWNSTREAM OF THE AIR HANDLING UNIT AND ALL FILTERS TO AUTOMATICALLY STOP THE FAN.
- PROVIDE UL LISTED 125 F° FRESH AIR RETURN AIR OR EACH SYSTEM OVER 2000 CFM TO SHUT DOWN THE FAN IN THE EVENT OF FIRE.
- OPERATIONS OF OTHER AIR INTS SHALL BE UNIMPAIRED BY THIS CONSTRUCTION PERMITS TO BE PAC FIRE FAN TO FURNISHERS F-TROD WITHIN FIVE FEET OF AIR HANDLING UNITS.
- ALL THERMOSTATS TO BE AUTOMATIC CHANGEOVER WITH HEAT SWITCH.
- EXHAUST FAN SHALL BE CONTROLLED BY A SWITCH ON THE WALL IN THE SAME LOCATION AS LIGHT SWITCHES. PROVIDE BACK DRAFT DAMPERS.
- PROVIDE AND INSTALL WATER PROOF GRILLE VENT IN PROPER ROOF LOCATION FOR FLASHING THROUGH EXHAUST.
- ALL SUPPLY AIR VENTS SHALL BE EQUIPPED WITH AIR CONTROL DAMPERS AT THE REGISTER.
- FRESH AIR SHALL BE SUPPLIED TO EACH AIR HANDLER THROUGH ENTERIOR WALL DUCT SUPPLIED WITH A CONTROL DAMPER.
- ALL ELECTRICAL, MECHANICAL, AND PLUMBING PENETRATING FIRE CONSTRUCTION SHALL BE SEALED WITH A MATERIAL CAPABLE OF PREVENTING THE PASSAGE OF FLAMES AND HOT GASES WHEN TESTED IN ACCORDANCE WITH ASTM E814.
- ALL MECHANICAL SYMBOLS ARE DRAWN DIAGRAMMATICALLY. CONTRACTORS TO VERIFY WITH OWNER LOCATIONS OF VENTS, DAMPERS, REGISTER, ETC.
- REFER TO REFLECTED CEILING PLAN FOR FINAL GRILLE AND DIFFUSER LOCATIONS AND COORDINATE AS REQUIRED.
- FINAL LOCATION OF TEMPERATURE CONTROLS TO BE COORDINATED WITH OWNER AT JOB SITE.
- PROVIDE AND INSTALL SMOKE DETECTORS AS APPROVED BY LOCAL A.U.S. PLACE NEAR R/A AND S/A OPENINGS OF AIR AND PROVIDE WITH ACCESS PANEL, WIRING BY ELECTRICAL CONTRACTOR, IF REQUIRED.
- FRESH AIR INTAKES ARE REQUIRED TO HAVE MOTORISED OR GRAVITY DAMPERS TO SHUT OFF WHEN SYSTEM IS NOT RUNNING.
- PROVIDE BIRD SCREENS AT ALL EXTERIOR MECHANICAL PENETRATIONS.



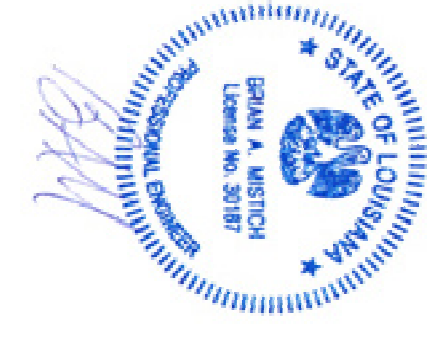
DAMMON ENGINEERING, INC.

LOUISIANA & MISSISSIPPI

Chief Engineer: Brian Mistich, PE
554 Old Spanish Trail
Sudell, LA 70458

www.dammonengineering.com
info@dammonengineering.com
PH: 985.649.5832 F: 985.641.5950

#	DESCRIPTION	REVISIONS	DATE



37710 LEGGETT ROAD
SLIDELL, LA 70460

JOB No: 2295 DATE: 09/04/2016

DRAWN BY: JTL CHECKED BY: BAM

SHEET TITLE: MECHANICAL PLAN

00 - 10 - 20 - 11 - 00

M101

DRAWING NUMBER: MECHANICAL PLAN

SHEET No. 12 of 15