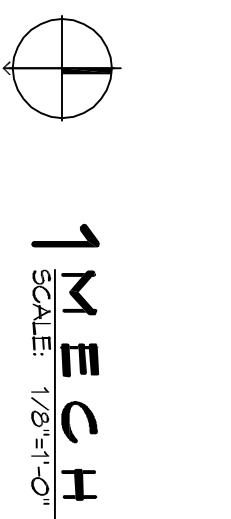


LEGEND

- SUPPLY AIR GRILLE
- EXHAUST FAN
- T THERMOSTAT
- SUPPLY AIR DUCT
- DAMPER CONTROL
- ROUND FLEX DUCT, MAX LENGTH 12'-0", MIN R.6 PROVIDE MAN DAMPER AT DUCT SIDE AS FOLLOWS:
250 CFM TO 350 CFM = 6"
150 CFM TO 200 CFM = 8"
100 CFM TO 150 CFM = 6"

- ### MECHANICAL HVAC NOTES
- ALL WALL MOUNTED AIRS INTS ARE EXISTING AND ARE TO BE REISED WITH NEW DUCTWORK. ALL NEW DUCTWORK IS DRAWN DIAGRAMMATICALLY AND SHALL BE FIELD VERIFIED PRIOR TO CONSTRUCTION AND INSTALLATION.
 - CONCEALED DUCTWORK TO BE GALVANIZED SHEET METAL LINED WITH FIBROGLASS GLASS DUCT LINER, MIN R.6, INSTALLED PER SWANA STANDARDS.
 - EXPOSED DUCTWORK TO BE GALVANIZED SHEET METAL LINED WITH FIBROGLASS GLASS DUCT LINER, MIN R.6, INSTALLED PER SWANA STANDARDS.
 - ROUND FLEXIBLE DUCT TO BE UL-181, CLASS 1, AIR DUCT MATERIALS.
 - DUCT SIZES SHOWN ARE CLEAR INSIDE DIMENSIONS.
 - IN ALL SYSTEMS OVER 2000 CFM AND LESS THAN 15,000 CFM SMOKE DETECTORS SHALL BE INSTALLED IN ACCORDANCE WITH NFPA 72E IN THE RETURN DUCT DOWNSTREAM OF THE AIR HANDLING UNIT AND ALL FILTERS TO AUTOMATICALLY STOP THE FAN.
 - PROVIDE UL LISTED 125 F FRESH AIR RETURN AIR OF EACH SYSTEM UNDER 2000 CFM TO SHUT DOWN THE FAN IN THE EVENT OF FIRE.
 - PROVIDE UL RATED FIRE DAMPERS WHERE REQUIRED AT ALL DUCT PENETRATIONS OF OTHER THAN RECESSED DAMPERS AND WHERE THIS CONSTRUCTION SHALL BE PERMITTED TO BE R/C FIRE R/N TO FURNISHES F-TREAT WITHIN FIVE FEET OF AIR HANDLING UNITS.
 - ALL THERMOSTATS TO BE AUTOMATIC CHANGED/ER WITH HEAT SWITCH.
 - ALL RESTROOM EXHAUST FAN(S) SHALL BE CONTROLLED BY A SWITCH ON THE WALL IN THE SAME LOCATION AS LIGHT SWITCH(S). PROVIDE EXHAUST FAN(S) WITH PROOF CEILING VENT IN PROPER ROOF LOCATION FOR EXHAUSTING FRESH EXHAUST DAMPERS AT THE RESTROOM.
 - FRESH AIR SHALL BE SUPPLIED TO EACH AIR HANDLER THROUGH EXTERIOR WALL DUCT SUPPLIED WITH A CONTROL DAMPER.
 - ALL ELECTRICAL MECHANICAL AND PLUMBING PENETRATING FIRE WALLS SHALL BE FIRE CALLED, PENETRATIONS THROUGH RATED CONSTRUCTION SHALL BE SEALED WITH A MATERIAL CAPABLE OF PREVENTING THE PASSAGE OF FLAMES AND HOT GASES WHEN TESTED IN ACCORDANCE WITH ASTM E814.
 - ALL MECHANICAL SYMBOLS ARE DRAWN DIAGRAMMATICALLY. CONTRACTOR TO VERIFY WITH OWNER LOCATIONS OF VENTS, DAMPERS, RESTROOMS, ETC.
 - FLEXIBLE DUCTWORK LENGTH NOT TO EXCEED 12'-0".
 - REFER TO REFLECTED CEILING PLAN FOR FINAL GRILLE AND DIFFUSER LOCATION AND COORDINATE AS REQUIRED.
 - FINAL LOCATION OF TEMPERATURE CONTROLS TO BE COORDINATED WITH OWNER AT JOB SITE.
 - PROVIDE AND INSTALL SMOKE DETECTORS AS APPROVED BY LOCAL AHAJ. PLACE NEAR R/A AND S/A OPENINGS OF AHU AND PROVIDE WITH ACCESS PANEL, WIRING BY ELECTRICAL CONTRACTOR, IF REQUIRED.
 - FRESH AIR INTAKES ARE REQUIRED TO HAVE NOTICED OR GRAVITY DAMPERS TO SHUT OFF WHEN SYSTEM IS NOT RUNNING.
 - PROVIDE BIRD SCREENS AT ALL EXTERIOR MECHANICAL PENETRATIONS.
 - CONTRACTOR SHALL PROVIDE A VEANS FOR ATTIC VENTILATION FOR THE MOVEMENT OF AIR ABOVE DROP CEILING(S) EITHER BY MECHANICAL VENTS OR POWER VENTS.



MECHANICAL PLAN PHASE "A"
SCALE: 1/8"=1'-0"

NOTE: AIR EXHAUST AND INTAKE OPENINGS THAT TERMINATE AGAINST LOCAL WEATHER CONDITIONS, EXHAUST GRILLES TO BE A MINIMUM OF 10'-0" FROM AIR INTAKES.

36" VULCANIZING DAMPER
12" X 12" LOWER 150 CFM
12" X 12" LOWER 100 CFM
12" X 12" LOWER 250 CFM

12" X 12" LOWER 150 CFM
12" X 12" LOWER 100 CFM
12" X 12" LOWER 250 CFM

12" X 12" LOWER 150 CFM
12" X 12" LOWER 100 CFM
12" X 12" LOWER 250 CFM

12" X 12" LOWER 150 CFM
12" X 12" LOWER 100 CFM
12" X 12" LOWER 250 CFM

