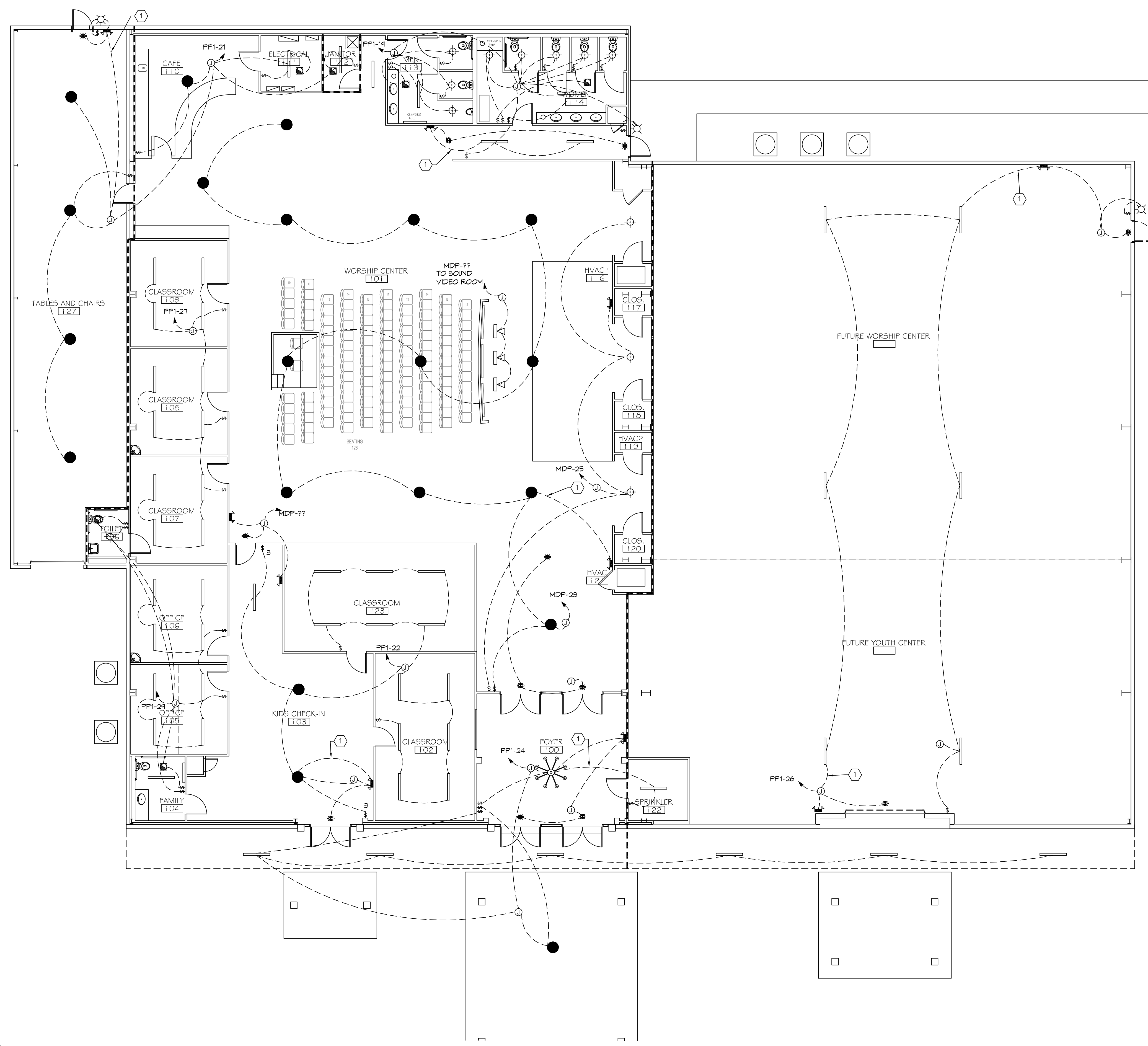


FILE NAME: J:\Projects\2016\2016-03-01\2016-03-01.dwg PLOT DATE: 02/07/2016 PLOT TIME: 10:08:33 AM



GENERAL LIGHTING NOTES

1. ALL WORK SHALL COMPLY WITH APPLICABLE NATIONAL, STATE, AND LOCAL CODES, RULES, REGULATIONS, AND REQUIREMENTS OF THE SERVICE UTILITY COMPANY.
2. REFER TO ARCHITECTURAL DRAWINGS FOR EXACT LOCATION AND MOUNTING INSTRUCTIONS FOR ALL LIGHT FIXTURES. NOTIFY THE ARCHITECT AND ENGINEER OF ANY DISCREPANCIES BETWEEN THESE PLANS AND THE ARCHITECTURAL PLANS RELATING TO QUANTITY, TYPE AND LOCATION OF DEVICES AND/OR FIXTURES.
3. WHEN SPECIFIC LIGHT FIXTURE HAS BEEN SPECIFIED IN THE FIXTURE SCHEDULE, ELECTRICAL SHALL PROVIDE COMPLETE ASSEMBLY INCLUDING ALL PARTS AND HARDWARE TO INSURE PROPER FUNCTIONING FIXTURE.
4. ALL CONDUCTORS SHALL BE #12 AWG UNLESS NOTED OTHERWISE.
5. ALL 120V RUNS LONGER THAN 60 FEET SHALL BE #10 AWG AND 277V RUNS LONGER THAN 150 FEET SHALL BE #10 AWG UNLESS NOTED OTHERWISE.
6. ALL CONDUCTORS SHALL BE COPPER.
7. WHERE CONDUCTOR SIZES ARE NOTED ON DRAWINGS, THAT WIRE SIZE SHALL BE THROUGH THE ENTIRE RUN UNLESS OTHERWISE NOTED.
8. MOUNTED LIGHT SWITCHES 48" AFF UNLESS NOTED OTHERWISE ON ARCHITECTURAL DRAWINGS.
9. ALL GANGED SWITCHES SHALL HAVE A COMMON SEAMLESS FACEPLATE. EACH MULTI-GANGED BOX SHALL BE NO MORE THAN SIX (6) SWITCHES WIDE. WHERE MORE THAN SIX (6) SWITCHES ARE SHOWN AT ONE (1) LOCATION, ADDITIONAL MULTI-GANGED BOXES SHALL BE STACKED VERTICALLY AND THE WIDTH OF THE MULTI-GANGS SHALL BE AS EVEN AS POSSIBLE.
10. EACH DIMMER SWITCH SHALL HAVE A WATTING RATING 25% HIGHER THAN THE TOTAL WATTAGE OF ALL LIGHTS TO BE CONTROLLED BY THE DIMMER. DIMMER SIZES 600, 1000, 1500, AND 2000 WATTS, LUTRON NOVA T-STAR. WHERE SWITCHES ARE GANGED WITH DIMMERS, THE SWITCHES SHALL ALSO BE LUTRON NOVA T-STAR. FLUORESCENT AND LOW VOLTAGE DIMMERS HAL LBE LUTRON NOVA T-STAR.
11. WHERE FLUORESCENT FIXTURES ARE SHOWN TO BE DIMMED, THE FIXTURES SHALL HAVE DIMMING TYPE BALLASTS WHICH ARE COMPATIBLE WITH THE SPECIFIED DIMMERS.
12. WHERE LED FIXTURES/LAMPS ARE SHOWN TO BE DIMMED, THE DIMMER SHALL BE COMPATIBLE WITH THE FIXTURE/LAMP SPECIFIED OR PROVIDED.
13. ALL EMERGENCY LIGHT FIXTURES SHALL HAVE 90 MINUTE BATTERY BACKUP WITH INTEGRAL TEST BUTTON AND SHALL BURN CONTINUOUSLY.
14. ALL FLUORESCENT FIXTURES THAT UTILIZE DOUBLE-ENDED LAMPS AND CONTAIN BALLASTS SHALL BE PROVIDED WITH A DISCONNECTING MEANS IN ACCORDANCE WITH NEC 410.73G.

LEGEND

2x4' SUSPENDED FLUORESCENT LIGHT FIXTURE (3 - 32w BULB) LITHONIA 26T8 3 32 A12	CEILING MOUNTED FLUORESCENT STRIP FIXTURE (2 - 32w BULB)
2x2' SUSPENDED FLUORESCENT LIGHT FIXTURE (2 BULB 51w) LITHONIA 26TL2 33L A19 LP840	LED EXTERIOR, MOTION ACTIVATED FLOOD LIGHT WITH PE-PHOTO TIMER (240w)
DIRECTIONAL STAGE LIGHT (75w LED)	CHANDELIER LIGHT FIXTURE
EMERGENCY LIGHT FIXTURE (12w)	ELECTRIC PANEL BOARD
EXIT LIGHT FIXTURE - WALL MOUNTED (10w)	CIRCUIT HOME RUN
EXIT LIGHT FIXTURE - CEILING MOUNTED (10w)	LIGHT SWITCH 120V COMMERCIAL GRADE
LED WALL MOUNTED LIGHT FIXTURE WITH 90 MIN. BACK-UP (75w)	LIGHT SWITCH - 3-WAY 120V COMMERCIAL GRADE
RECESSED CEILING LIGHT FIXTURE (90w)	LIGHT SWITCH - DIMMER 120V COMMERCIAL GRADE
WALL-MOUNTED VANITY LIGHT FIXTURE (100w)	VENT/LIGHT COMBO UNIT (23w), SEE MECHANICAL
CEILING MOUNTED LIGHT FIXTURE (100w)	VENT/EXHAUST FAN ONLY, SEE MECHANICAL SHEET

KEYED NOTES

- ① CONNECT EMERGENCY LIGHT CIRCUIT TO UNSWITCHED HOT OF LIGHTING CIRCUIT.

DAMMON ENGINEERING, INC.
LOUISIANA & MISSISSIPPI

www.dammonengineering.com
info@dammonengineering.com
504 Old Spanish Trail
Bossier, LA 70608
PH: 987.949.2332, FX: 987.949.1292

Chief Engineer: Brian Mitchell, PE
504 Old Spanish Trail
Bossier, LA 70608

REVISIONS	DATE	DESCRIPTION

#	DESCRIPTION

GRACE FELLOWSHIP

34442 WILLIS ALLEY
PEARL RIVER LA
JOB No: 2540 DATE: 02/07/2016
DRAWN BY: PWHJ CHECKED BY: BAW

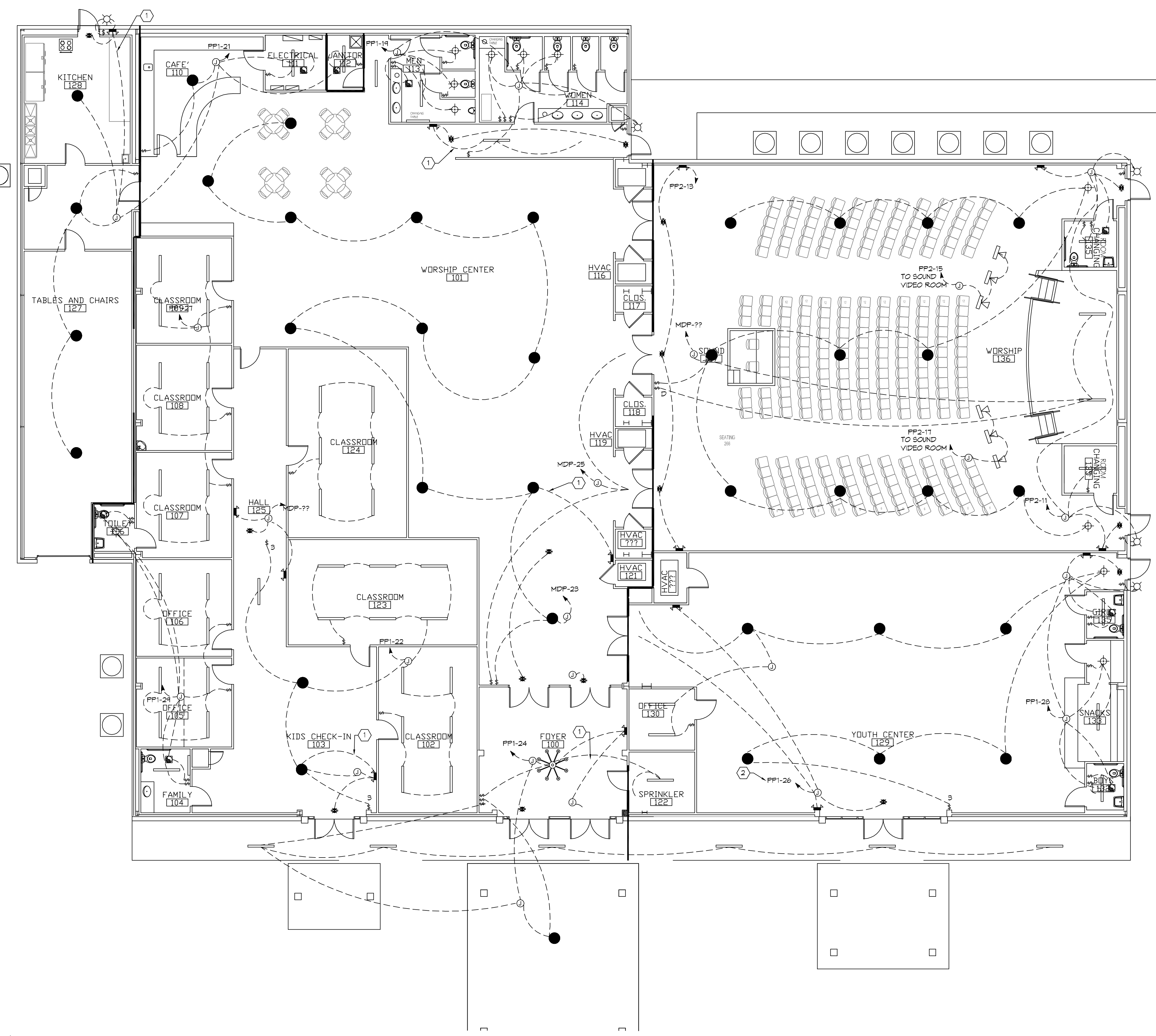
SHEET TITLE:
LIGHTING PLAN
PHASE A

DRAWING NUMBER:
E103

SHEET No: 14 of 2

1 LIGHTING PLAN PHASE A
SCALE: 1/8"=1'-0"

FILE NAME: J:\Projects\2016\2016-07-20\2016-07-20-01.dwg PLOT DATE: 02/07/2016 PLOT TIME: 10:58:10 AM



GENERAL LIGHTING NOTES

1. ALL WORK SHALL COMPLY WITH APPLICABLE NATIONAL, STATE, AND LOCAL CODES, RULES, REGULATIONS, AND REQUIREMENTS OF THE SERVICE UTILITY COMPANY.
2. REFER TO ARCHITECTURAL DRAWINGS FOR EXACT LOCATION AND MOUNTING INSTRUCTIONS FOR ALL LIGHT FIXTURES. NOTIFY THE ARCHITECT AND ENGINEER OF ANY DISCREPANCIES BETWEEN THESE PLANS AND THE ARCHITECTURAL PLANS RELATING TO QUANTITY, TYPE AND LOCATION OF DEVICES AND/OR FIXTURES.
3. WHEN SPECIFIC LIGHT FIXTURE HAS BEEN SPECIFIED IN THE FIXTURE SCHEDULE, ELECTRICAL SHALL PROVIDE COMPLETE ASSEMBLY INCLUDING ALL PARTS AND HARDWARE TO INSURE PROPER FUNCTIONING FIXTURE.
4. ALL CONDUCTORS SHALL BE #12 AWG UNLESS NOTED OTHERWISE.
5. ALL 120V RUNS LONGER THAN 60 FEET SHALL BE #10 AWG AND 277V RUNS LONGER THAN 150 FEET SHALL BE #10 AWG UNLESS NOTED OTHERWISE.
6. ALL CONDUCTORS SHALL BE COPPER.
7. WHERE CONDUCTOR SIZES ARE NOTED ON DRAWINGS, THAT WIRE SIZE SHALL BE THROUGH THE ENTIRE RUN UNLESS OTHERWISE NOTED.
8. MOUNTED LIGHT SWITCHES 48" AFF UNLESS NOTED OTHERWISE ON ARCHITECTURAL DRAWINGS.
9. ALL GANGED SWITCHES SHALL HAVE A COMMON SEAMLESS FACEPLATE. EACH MULTI-GANGED BOX SHALL BE NO MORE THAN SIX (6) SWITCHES WIDE. WHERE MORE THAN SIX (6) SWITCHES ARE SHOWN AT ONE (1) LOCATION, ADDITIONAL MULTI-GANGED BOXES SHALL BE STACKED VERTICALLY AND THE WIDTH OF THE MULTI-GANGS SHALL BE AS EVEN AS POSSIBLE.
10. EACH DIMMER SWITCH SHALL HAVE A WATTING RATING 25% HIGHER THAN THE TOTAL WATTAGE OF ALL LIGHTS TO BE CONTROLLED BY THE DIMMER. DIMMER SIZES 600, 1000, 1500, AND 2000 WATTS, LUTRON NOVA T-STAR. WHERE SWITCHES ARE GANGED WITH DIMMERS, THE SWITCHES SHALL ALSO BE LUTRON NOVA T-STAR. FLUORESCENT AND LOW VOLTAGE DIMMERS HAL LBE LUTRON NOVA T-STAR.
11. WHERE FLUORESCENT FIXTURES ARE SHOWN TO BE DIMMED, THE FIXTURES SHALL HAVE DIMMING TYPE BALLASTS WHICH ARE COMPATIBLE WITH THE SPECIFIED DIMMERS.
12. WHERE LED FIXTURES/LAMPS ARE SHOWN TO BE DIMMED, THE DIMMER SHALL BE COMPATIBLE WITH THE FIXTURE/LAMP SPECIFIED OR PROVIDED.
13. ALL EMERGENCY LIGHT FIXTURES SHALL HAVE 90 MINUTE BATTERY BACKUP WITH INTEGRAL TEST BUTTON AND SHALL BURN CONTINUOUSLY.
14. ALL FLUORESCENT FIXTURES THAT UTILIZE DOUBLE-ENDED LAMPS AND CONTAIN BALLASTS SHALL BE PROVIDED WITH A DISCONNECTING MEANS IN ACCORDANCE WITH NEC 410.73G.

LEGEND

- | | |
|---|---|
| 2x4' SUSPENDED FLUORESCENT LIGHT FIXTURE (3 - 32w BULB)
LITHONIA 26T8 3 32 A12 | CEILING MOUNTED FLUORESCENT STRIP FIXTURE (2 - 32w BULB) |
| 2x2' SUSPENDED FLUORESCENT LIGHT FIXTURE (2 BULB 51w)
LITHONIA 26TL2 33L A19 LP840 | LED EXTERIOR, MOTION ACTIVATED FLOOD LIGHT WITH PE-PHOTO TIMER (240w) |
| DIRECTIONAL STAGE LIGHT (75w LED) | CHANDELIER LIGHT FIXTURE |
| EMERGENCY LIGHT FIXTURE (12w) | ELECTRIC PANEL BOARD |
| EXIT LIGHT FIXTURE - WALL MOUNTED (10w) | CIRCUIT HOME RUN |
| EXIT LIGHT FIXTURE - CEILING MOUNTED (10w) | LIGHT SWITCH 120V COMMERCIAL GRADE |
| LED WALL MOUNTED LIGHT FIXTURE WITH 90 MIN. BACK-UP (75w) | LIGHT SWITCH - 3-WAY 120V COMMERCIAL GRADE |
| RECESSED CEILING LIGHT FIXTURE (90w) | LIGHT SWITCH - DIMMER 120V COMMERCIAL GRADE |
| WALL-MOUNTED VANITY LIGHT FIXTURE (100w) | VENT/LIGHT COMBO UNIT (23w), SEE MECHANICAL |
| CEILING MOUNTED LIGHT FIXTURE (100w) | VENT/EXHAUST FAN ONLY, SEE MECHANICAL SHEET |

KEYED NOTES

1. CONNECT EMERGENCY LIGHT CIRCUIT TO UNSWITCHED HOT OF LIGHTING CIRCUIT.
2. REUSE CIRCUIT INSTALLED IN PHASE 1 FOR LIGHT IN YOUTH CENTER.

DAMMON ENGINEERING, INC.
 LOUISIANA & MISSISSIPPI
 Chief Engineer: Brian Metch, PE
 www.dammonengineering.com
 info@dammonengineering.com
 504 Old Spanish Trail
 Slidell, LA 70468
 PH: 985.649.2532, FX: 985.649.1920

REVISIONS	DATE	DESCRIPTION

#	DESCRIPTION

GRACE FELLOWSHIP
 3442 MILLIS ALLEY
 PEARL RIVER LA
 JOB No: 2540 DATE: 02/07/2016
 DRAWN BY: PWHY CHECKED BY: BAW

SHEET TITLE:
 LIGHTING PLAN
 PHASE B
 DRAWING NUMBER:
E104
 SHEET No: 14 of 2

2 LIGHTING PLAN PHASE B
 SCALE: 1/8"=1'-0"