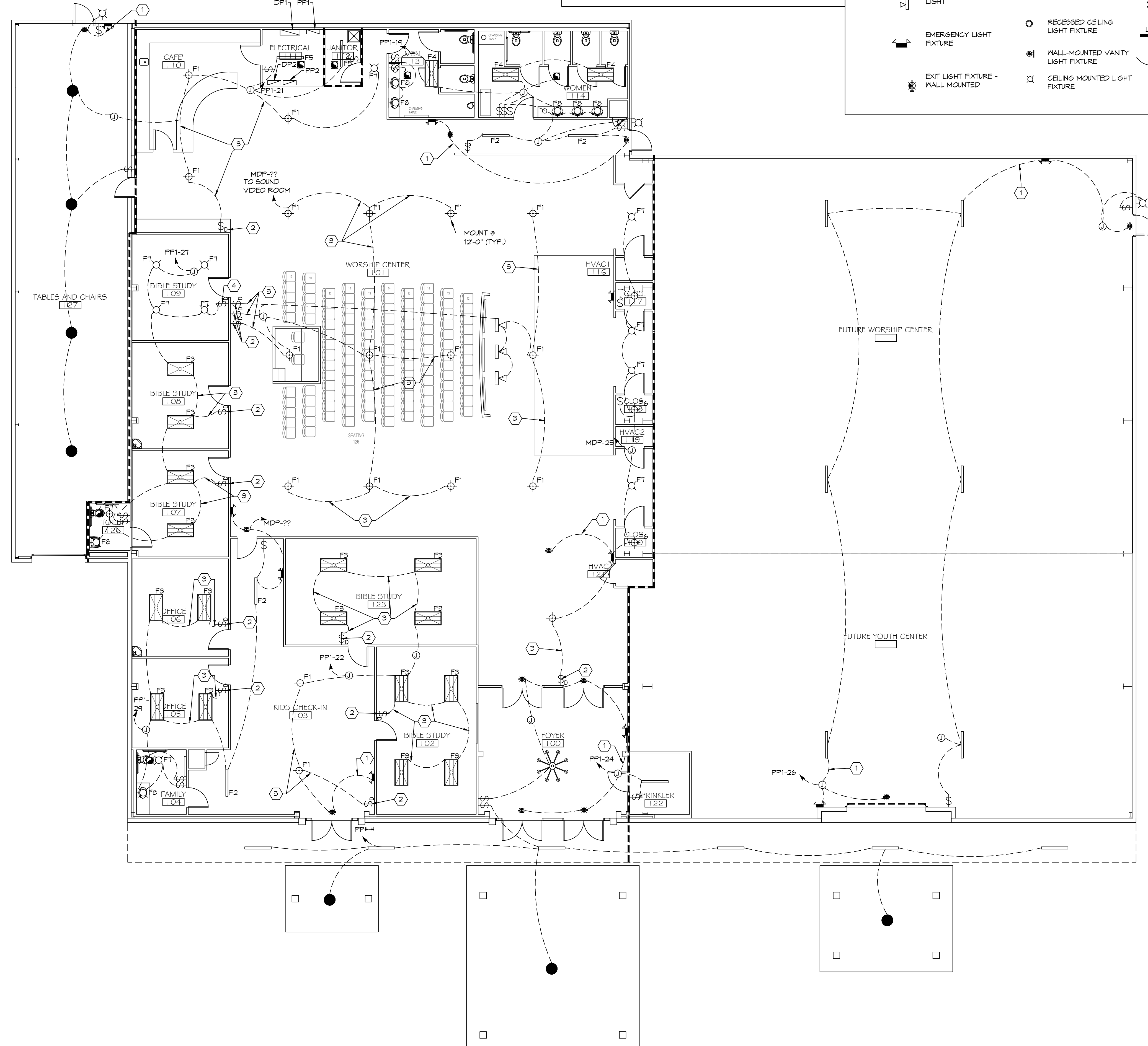


- NOTED NOTES**
- CONNECT EMERGENCY LIGHT CIRCUIT TO UNSTITCHED HOT OF LIGHTING CIRCUIT.
 - 0-10V DIMMER, CUTRON DIVA-DV7-COLOR.
 - PROVIDE (2) CONDUCTOR 0-10V WIRING WITH 120V CONDUCTORS FOR 0-10V DIMMING.
 - DIMMER CUTRON DVGL-1534.

- LEGEND**
- 2X4' SUSPENDED FLUORESCENT LIGHT FIXTURE LITHONIA 2670 3 32 A12
 - DIRECTIONAL STAGE LIGHT
 - EMERGENCY LIGHT FIXTURE
 - EXIT LIGHT FIXTURE - WALL MOUNTED
 - EXIT LIGHT FIXTURE - CEILING MOUNTED
 - LED WALL MOUNTED LIGHT FIXTURE WITH 90 MIN. BACK-UP
 - RECESSED CEILING LIGHT FIXTURE
 - WALL-MOUNTED VANITY LIGHT FIXTURE
 - CEILING MOUNTED LIGHT FIXTURE
 - CEILING MOUNTED FLUORESCENT STRIP FIXTURE (2 - 32W BULB)
 - CHANDELIER LIGHT FIXTURE
 - ELECTRIC PANEL BOARD
 - CIRCUIT HOME RUN
 - LIGHT SWITCH - 3-WAY 120V COMMERCIAL GRADE
 - LIGHT SWITCH - DIMMER 120V COMMERCIAL GRADE
 - VENT/EXHAUST FAN ONLY, SEE MECHANICAL SHEET

- GENERAL LIGHTING NOTES**
- ALL WORK SHALL COMPLY WITH APPLICABLE NATIONAL, STATE, AND LOCAL CODES, RULES, REGULATIONS, AND REQUIREMENTS OF THE SERVICE UTILITY COMPANY.
 - REFER TO ARCHITECTURAL DRAWINGS FOR EXACT LOCATION AND LOCATION INSTRUCTIONS FOR ALL LIGHT FIXTURES. NOTIFY THE ARCHITECT AND ENGINEER OF ANY DISCREPANCIES BETWEEN THESE PLANS AND THE ARCHITECTURAL PLANS RELATING TO QUANTITY, TYPE AND LOCATION OF DEVICES AND/OR FIXTURES.
 - WHEN SPECIFIC LIGHT FIXTURE HAS BEEN SPECIFIED IN THE FIXTURE SCHEDULE, ELECTRICAL SHALL PROVIDE COMPLETE ASSEMBLY INCLUSIVE ALL PARTS AND HARDWARE TO INSURE PROPER FUNCTIONING FIXTURE.
 - ALL CONDUCTORS SHALL BE #12 AWG UNLESS NOTED OTHERWISE.
 - ALL 120V RUNS LONGER THAN 60 FEET SHALL BE #10 AWG AND 277V RUNS LONGER THAN 150 FEET SHALL BE #10 AWG UNLESS NOTED OTHERWISE.
 - ALL CONDUCTORS SHALL BE COPPER.
 - WHERE CONDUCTOR SIZES ARE NOTED ON DRAWINGS, THAT WIRE SIZE SHALL BE THROUGH THE ENTIRE RUN UNLESS OTHERWISE NOTED.
 - MOUNTED LIGHT SWITCHES 48" AFF UNLESS NOTED OTHERWISE ON ARCHITECTURAL DRAWINGS.
 - ALL GANGED SWITCHES SHALL HAVE A COMMON SEAMLESS FACEPLATE. EACH MULTI-GANGED BOX SHALL BE NO MORE THAN SIX (6) SWITCHES WIDE. WHERE MORE THAN SIX (6) SWITCHES ARE SHOWN AT ONE (1) LOCATION, ADDITIONAL MULTI-GANGED BOXES SHALL BE STACKED VERTICALLY AND THE WIDTH OF THE MULTI-GANGS SHALL BE AS EVEN AS POSSIBLE.
 - EACH DIMMER SWITCH SHALL HAVE A RATING 25% HIGHER THAN THE TOTAL WATTAGE OF ALL LIGHTS TO BE CONTROLLED BY THE DIMMER. DIMMER SIZES 600, 1000, 1500, AND 2000 WATTS, LUTRON NOVA T-STAR. WHERE SWITCHES ARE GANGED WITH DIMMERS, THE SWITCHES SHALL ALSO BE LUTRON NOVA T-STAR. FLUORESCENT AND LOW VOLTAGE DIMMERS SHALL BE LUTRON NOVA T-STAR.
 - WHERE FLUORESCENT FIXTURES ARE SHOWN TO BE DIMMED, THE FIXTURES SHALL HAVE DIMMING TYPE BALLASTS WHICH ARE COMPATIBLE WITH THE SPECIFIED DIMMERS.
 - WHERE LED FIXTURES/LAMPS ARE SHOWN TO BE DIMMED, THE DIMMER SHALL BE COMPATIBLE WITH THE FIXTURE/LAMP SPECIFIED OR PROVIDED.
 - ALL EMERGENCY LIGHT FIXTURES SHALL HAVE 90 MINUTE BATTERY BACKUP WITH INTEGRAL TEST BUTTON AND SHALL BURN CONTINUOUSLY.
 - ALL FLUORESCENT FIXTURES THAT UTILIZE DOUBLE-ENDED LAMPS AND CONTAIN BALLASTS SHALL BE PROVIDED WITH A DISCONNECTING MEANS IN ACCORDANCE WITH NEC 410.135.



LIGHTING FIXTURE SCHEDULE

TYPES	REMARKS	CATALOG NO.	MOUNTING	LAMPS				
				VOLT	QTY	TYPE	TOTAL WATTS	NOTES
F1	UFU PENDANT 8000LM	PORTFOLIO LSMAC 48-80W-90 30-DE010-MB	PENDANT	120	1	LED	88	3000K
F2	NARROW SURFACE 2400LM	BAKTCO BSS205-4-30-L-A-VE RIFY MOUNTING-SN-AW	SURFACE/PENDANT	120	1	LED	6	3000K
F3	FLAT PANEL 2X4 5300LM	METALUX 24FP5830 C9 WITH SURFACE MOUNT KIT	SURFACE	120	1	LED	58	3000K
F4	FLAT PANEL 2X4 3900LM	METALUX 24FP5830 C9 WITH SURFACE MOUNT KIT	SURFACE	120	1	LED	40	3000K
F5	STRIP 3450LM	METALUX 45NLED-LD 5-34SL-LN-UNV-CDI	SURFACE	120	1	LED	25	3000K
F6	DROM 1060LM	METALUX FM-LED-12-WH-830-PR	SURFACE	120	1	LED	14	3000K
F7	DOWNLIGHT 900LM	HALO ML5609930-5925C-E55 OIGAT	RECESS	120	1	LED	9	3000K
F8	VANITY LIGHT	OXYGEN 3-537-2724	WALL	120	1	LED	15	2700K

DAMMON ENGINEERING, INC.
LOUISIANA & MISSISSIPPI

Chief Engineer: Brian Mitchell, PE
554 Old Spanish Trail
Stell, LA 70458

DATE: 04/30/2018
DATE: 04/30/2018
DATE: 04/30/2018

2340
3440 WILHELM ALLEY
PEARL RIVER, LA
JOB No: 18-001
DRAWN BY: PHM
CHECKED BY: BAW

SERACELOWSHIP

SHEET TITLE:
LIGHTING PLAN
PHASE A

DRAWING NUMBER:

E103

SHEET No: 15 of 17

1 LIGHTING PLAN PHASE A
SCALE: 1/8"=1'-0"

KEY NOTES

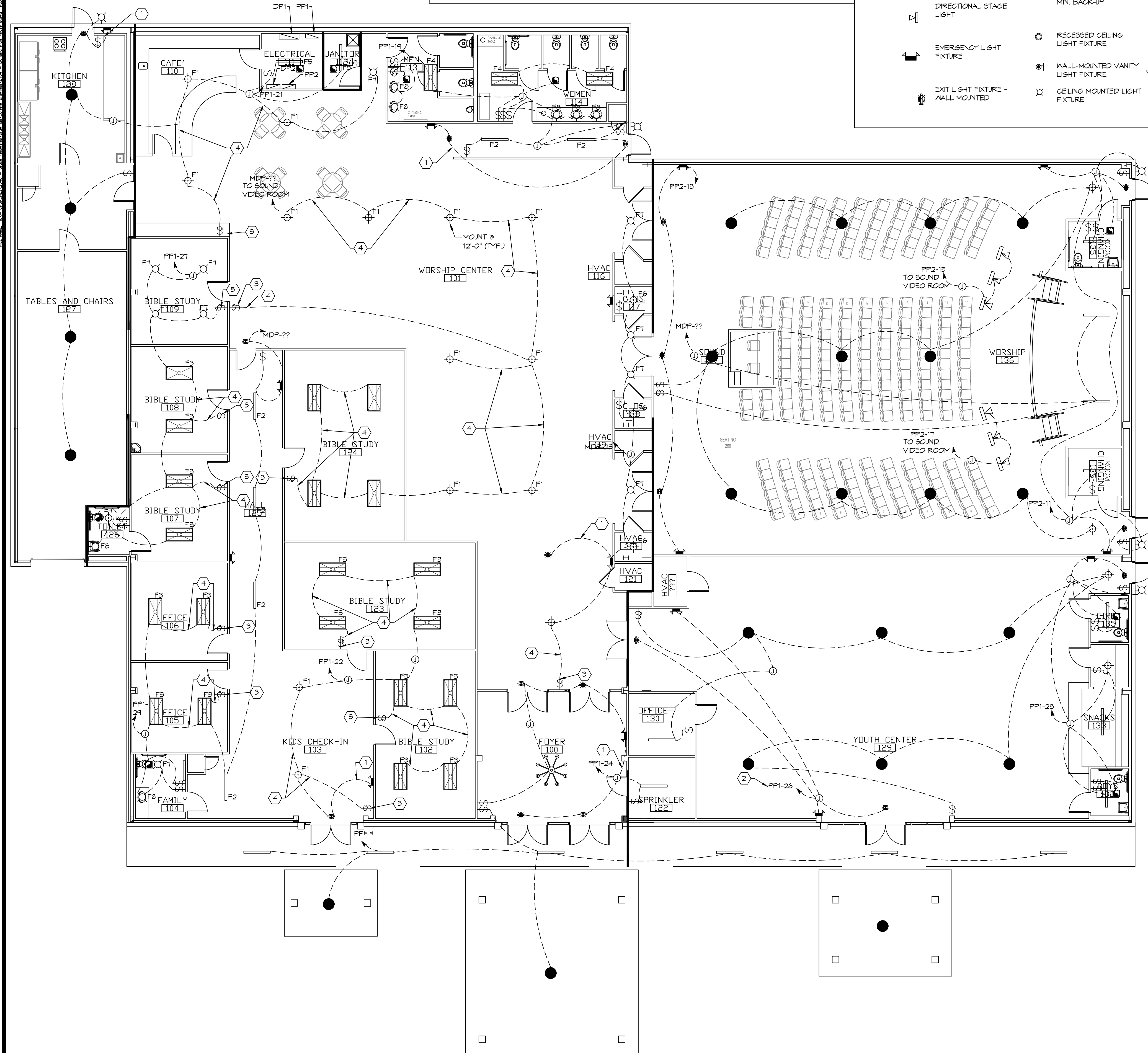
- 1. CONNECT EMERGENCY LIGHT CIRCUIT TO UNSTITCHED HOT OF LIGHTING CIRCUIT.
- 2. REUSE CIRCUIT INSTALLED IN PHASE 1 FOR LIGHT IN YOUTH CENTER.
- 3. 0-10V DIMMER. CUTRON DVA-DVTY-COLOR.
- 4. PROVIDE (2) CONDUCTOR 0-10V WIRING WITH 120V CONDUCTORS FOR 0-10V DIMMING.
- 5. DIMMER CUTRON DVGL-1539.

LEGEND

- 2X4' SUSPENDED FLUORESCENT LIGHT FIXTURE LITHONIA 2670 3 32 A12
- DIRECTIONAL STAGE LIGHT
- EMERGENCY LIGHT FIXTURE
- EXIT LIGHT FIXTURE - WALL MOUNTED
- EXIT LIGHT FIXTURE - CEILING MOUNTED
- LED WALL MOUNTED LIGHT FIXTURE WITH 90 MIN. BACK-UP
- RECESSED CEILING LIGHT FIXTURE
- WALL-MOUNTED VANITY LIGHT FIXTURE
- CEILING MOUNTED LIGHT FIXTURE
- CEILING MOUNTED FLUORESCENT STRIP FIXTURE (2 - 32W BULB)
- CHANDLIER LIGHT FIXTURE
- ELECTRIC PANEL BOARD
- CIRCUIT HOME RUN
- LIGHT SWITCH - 3-WAY 120V COMMERCIAL GRADE
- LIGHT SWITCH - DIMMER 120V COMMERCIAL GRADE
- LIGHT SWITCH 120V COMMERCIAL GRADE
- VENT/EXHAUST FAN ONLY, SEE MECHANICAL SHEET

GENERAL LIGHTING NOTES

1. ALL WORK SHALL COMPLY WITH APPLICABLE NATIONAL, STATE, AND LOCAL CODES, RULES, REGULATIONS, AND REQUIREMENTS OF THE SERVICE UTILITY COMPANY.
2. REFER TO ARCHITECTURAL DRAWINGS FOR EXACT LOCATION AND LOCATION INSTRUCTIONS FOR ALL LIGHT FIXTURES. NOTIFY THE ARCHITECT AND ENGINEER OF ANY DISCREPANCIES BETWEEN THESE PLANS AND THE ARCHITECTURAL PLANS RELATING TO QUANTITY, TYPE AND LOCATION OF DEVICES AND/OR FIXTURES.
3. WHEN SPECIFIC LIGHT FIXTURE HAS BEEN SPECIFIED IN THE FIXTURE SCHEDULE, ELECTRICAL SHALL PROVIDE COMPLETE ASSEMBLY INCLUSIVE ALL PARTS AND HARDWARE TO INSURE PROPER FUNCTIONING FIXTURE.
4. ALL CONDUCTORS SHALL BE #12 AWG UNLESS NOTED OTHERWISE.
5. ALL 120V RUNS LONGER THAN 60 FEET SHALL BE #10 AWG AND 277V RUNS LONGER THAN 150 FEET SHALL BE #10 AWG UNLESS NOTED OTHERWISE.
6. ALL CONDUCTORS SHALL BE COPPER.
7. WHERE CONDUCTOR SIZES ARE NOTED ON DRAWINGS, THAT WIRE SIZE SHALL BE THROUGH THE ENTIRE RUN UNLESS OTHERWISE NOTED.
8. MOUNTED LIGHT SWITCHES 48" AFF UNLESS NOTED OTHERWISE ON ARCHITECTURAL DRAWINGS.
9. ALL GANGED SWITCHES SHALL HAVE A COMMON SEAMLESS FACEPLATE. EACH MULTI-GANGED BOX SHALL BE NO MORE THAN SIX (6) SWITCHES WIDE. WHERE MORE THAN SIX (6) SWITCHES ARE SHOWN AT ONE (1) LOCATION, ADDITIONAL MULTI-GANGED BOXES SHALL BE STACKED VERTICALLY AND THE WIDTH OF THE MULTI-GANGS SHALL BE AS EVEN AS POSSIBLE.
10. EACH DIMMER SWITCH SHALL HAVE A RATING 25% HIGHER THAN THE TOTAL WATTAGE OF ALL LIGHTS TO BE CONTROLLED BY THE DIMMER. DIMMER SIZES 600, 1000, 1500, AND 2000 WATTS. LUTRON NOVA T-STAR. WHERE SWITCHES ARE GANGED WITH DIMMERS, THE SWITCHES SHALL ALSO BE LUTRON NOVA T-STAR. FLUORESCENT AND LOW VOLTAGE DIMMERS SHALL BE LUTRON NOVA T-STAR.
11. WHERE FLUORESCENT FIXTURES ARE SHOWN TO BE DIMMED, THE FIXTURES SHALL HAVE DIMMING TYPE BALLASTS WHICH ARE COMPATIBLE WITH THE SPECIFIED DIMMERS.
12. WHERE LED FIXTURES/LAMPS ARE SHOWN TO BE DIMMED, THE DIMMER SHALL BE COMPATIBLE WITH THE FIXTURE/LAMP SPECIFIED OR PROVIDED.
13. ALL EMERGENCY LIGHT FIXTURES SHALL HAVE 90 MINUTE BATTERY BACKUP WITH INTEGRAL TEST BUTTON AND SHALL BURN CONTINUOUSLY.
14. ALL FLUORESCENT FIXTURES THAT UTILIZE DOUBLE-ENDED LAMPS AND CONTAIN BALLASTS SHALL BE PROVIDED WITH A DISCONNECTING MEANS IN ACCORDANCE WITH NEC 410.135.



TYPES	REMARKS	CATALOG NO.	MOUNTING	LAMPS				
				VOLT	QTY	TYPE	TOTAL WATTS	NOTES
F1	UFU PENDANT 8000LM	PORTFOLIO LSMAC 48-80W-90 30-DE010-MB	PENDANT	120	1	LED	88	3000K
F2	NARROW SURFACE 2400LM	BAKTCO BSS205-4-30-L-A-VE RIFY MOUNTING-SN-AW	SURFACE/PENDANT	120	1	LED	6	3000K
F3	FLAT PANEL 2X4 5300LM	METALUX 24FP5830 C9 WITH SURFACE MOUNT KIT	SURFACE	120	1	LED	58	3000K
F4	FLAT PANEL 2X4 3900LM	METALUX 24FP5830 C9 WITH SURFACE MOUNT KIT	SURFACE	120	1	LED	40	3000K
F5	STRIP 3450LM	METALUX 45NLED-LD 5-345L-LN-UNV-CDI	SURFACE	120	1	LED	25	3000K
F6	DROM 1060LM	METALUX FM-LED-12-WH-830-PR	SURFACE	120	1	LED	14	3000K
F7	DOWNLIGHT 900LM	HALO ML5609930 -5925C-E55 OIGAT	RECESS	120	1	LED	9	3000K
F8	VANITY LIGHT	OXYGEN 3-537-2724	WALL	120	1	LED	15	2700K

DAMMON
ENGINEERING, INC.
LOUISIANA & MISSISSIPPI

REVISIONS	DATE	DESCRIPTION

2340 DATE: 04/30/2018
DRAWN BY: C/C
CHECKED BY: BAW
JOB No: 2340
PEARL RIVER, LA.
SHEET TITLE: LIGHTING PLAN PHASE B

DRAWING NUMBER:

2 LIGHTING PLAN PHASE B
SCALE: 1/8"=1'-0"

E104