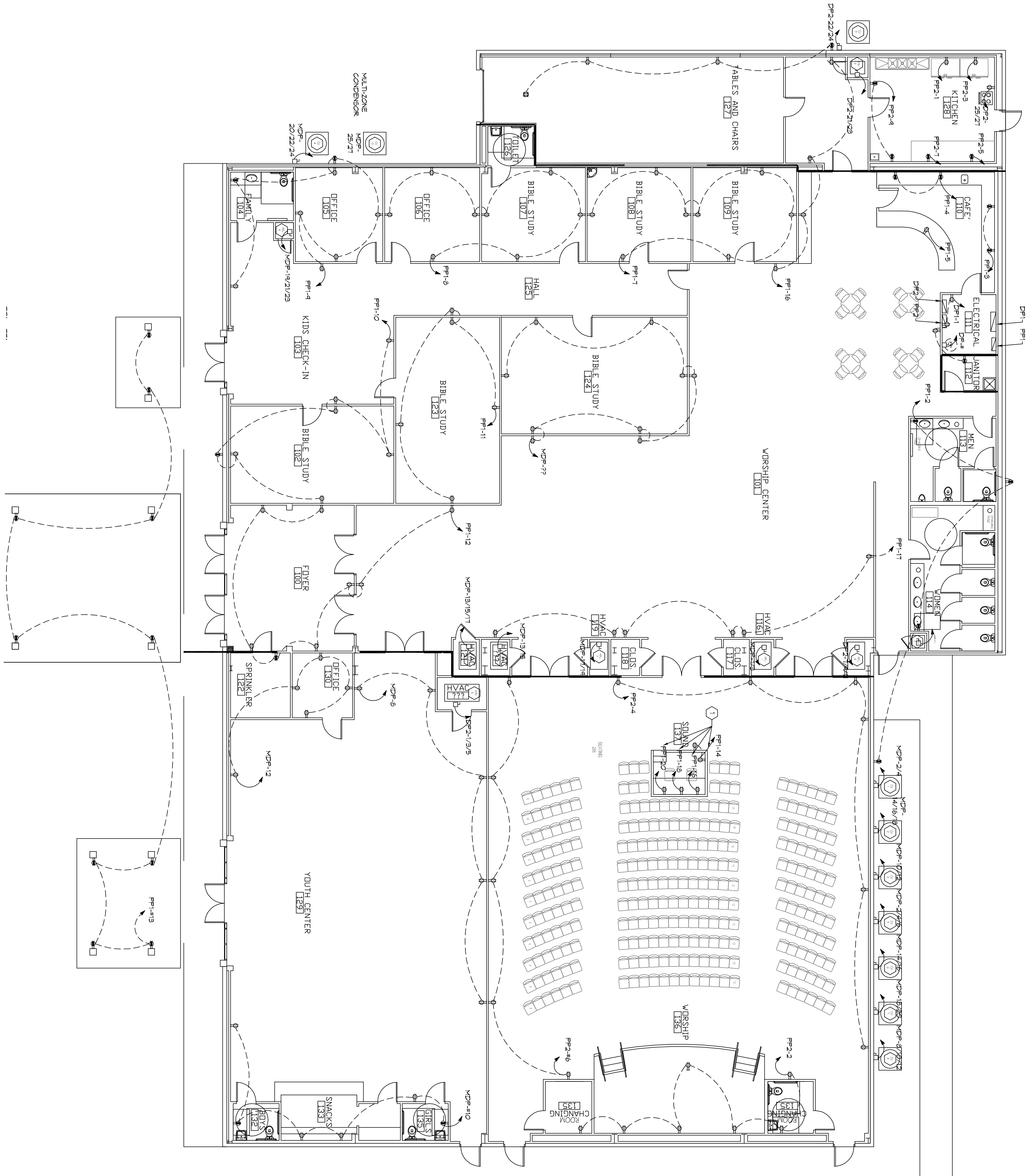


2 POWER PLAN PHASE B
SCALE: 1/8"=1'-0"



GENERAL NOTES
① RELOCATE CIRCUITS FOR SOUND EQUIPMENT.

DAMMON ENGINEERING, INC.
LOUISIANA & MISSISSIPPI

Chief Engineer: Brian Mistich, PE
554 Old Spanish Trail
Suldel, LA 70458

www.dammonengineering.com
info@dammonengineering.com
PH: 985.649.5832 F: 985.641.5950

REVISIONS	
#	DESCRIPTION



GRACE FELLOWSHIP

34492 WILLIS ALLEY
PEARL RIVER LA.

JOB No: 2340 DATE: 04/30/2018

DRAWN BY: CKD CHECKED BY: BAM

We warrant that the specifications, design and construction documents herein are based on the information provided to us and that we have exercised due care in their preparation. We do not warrant that the drawings or specifications herein shall be construed as a contract or as a representation of the actual construction. The drawings and specifications shall be read in conjunction with the contract documents. Dammon Engineering, Inc. shall not be held responsible for any errors or omissions in the drawings and specifications herein.

SHEET TITLE:
POWER PLAN PHASE B

DRAWING NUMBER:
E102

SHEET No. 14 of 18